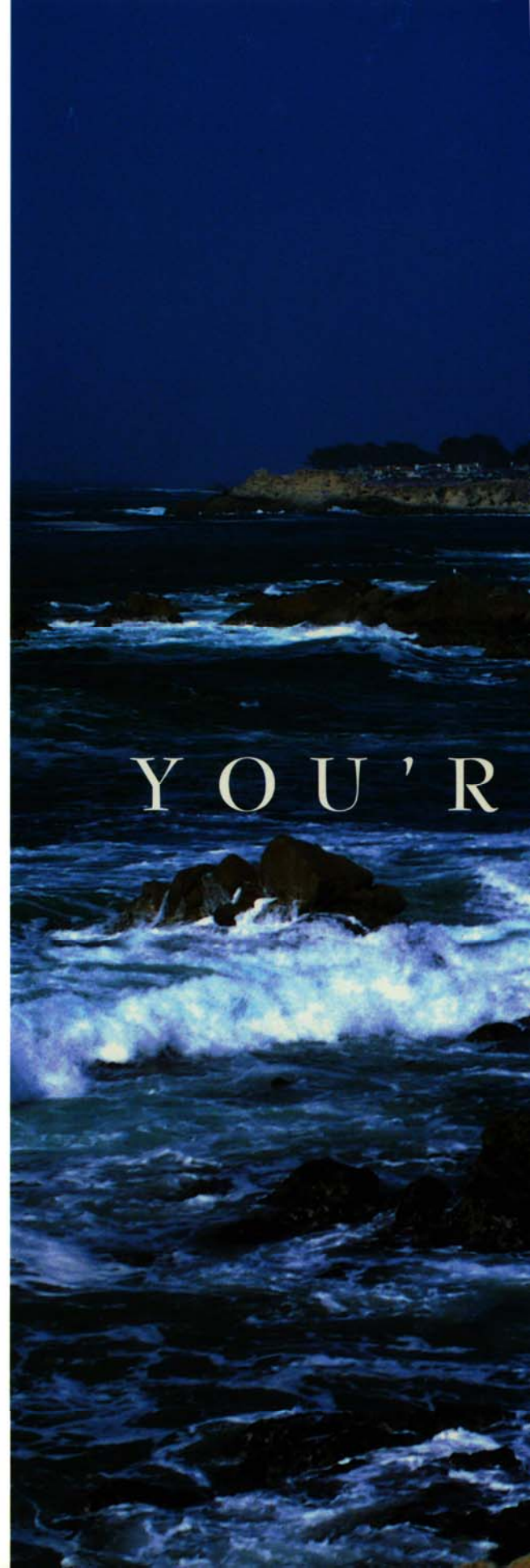


WANDERLODGE 97

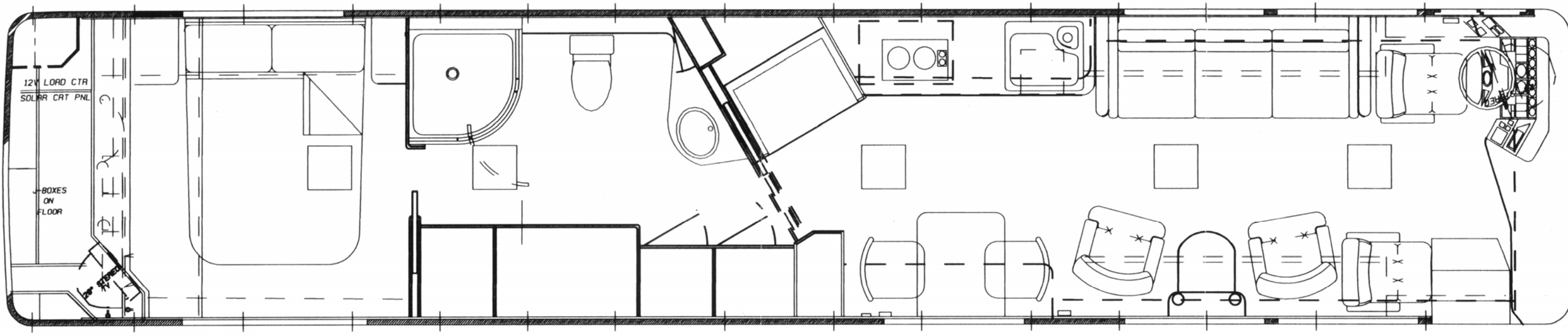


AN AMAZING JOURNEY AWAITS YOU,  
ONE WHICH WILL TAKE YOU CLEAR  
ACROSS A MAGNIFICENT LAND WE  
CALL AMERICA. ALONG THE WAY, YOU  
WILL DISCOVER COUNTLESS WONDERS  
OF BOTH NATURE AND MAN. YOU WILL  
EXPERIENCE A RICH TAPESTRY  
OF LIFE, AND WITNESS A COUNTRY'S  
STUNNING BEAUTY. BUT BE ADVISED:  
THIS IS NO WEEKEND JAUNT OR FLEETING  
VACATION. IT'S THE ADVENTURE  
YOU'VE WAITED A LIFETIME FOR.

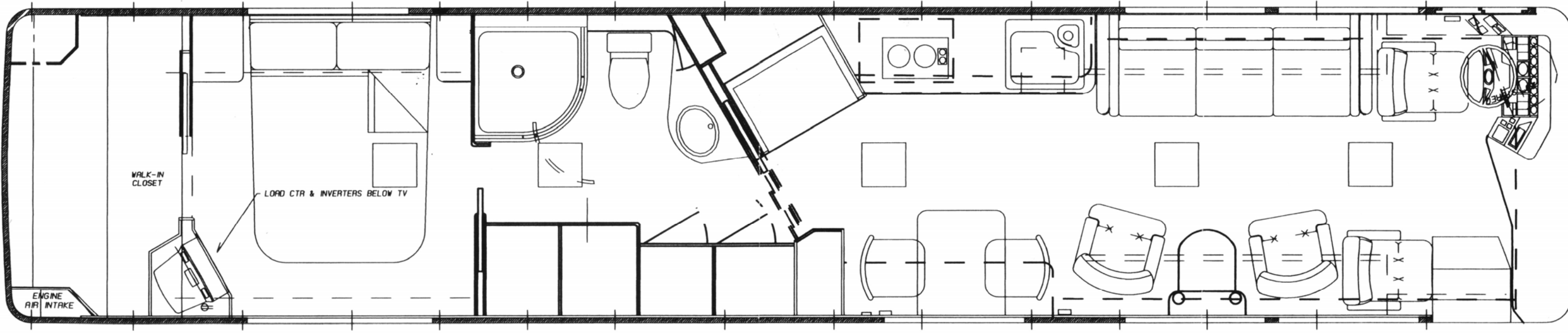


YOU'R



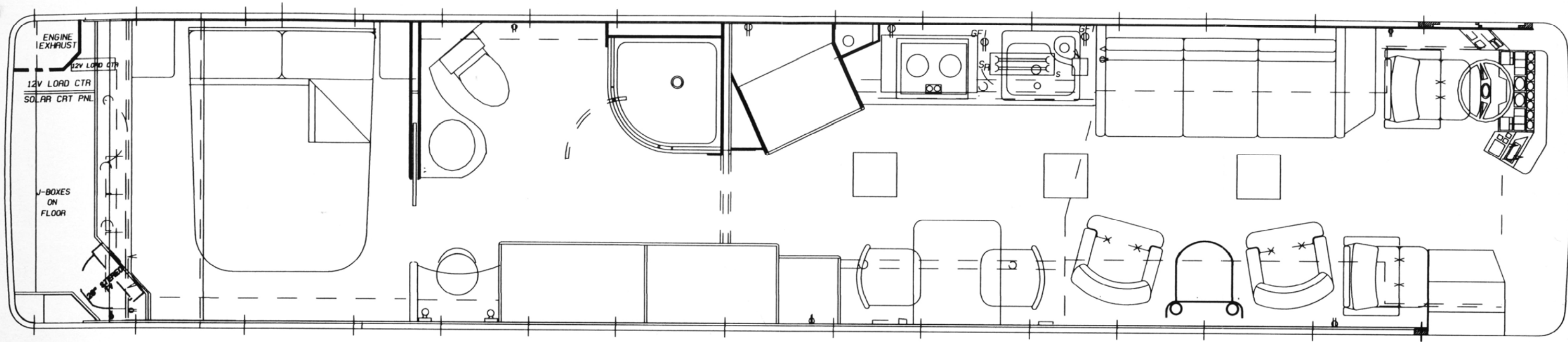


1997 43-1 WITH HANGING CLOSET

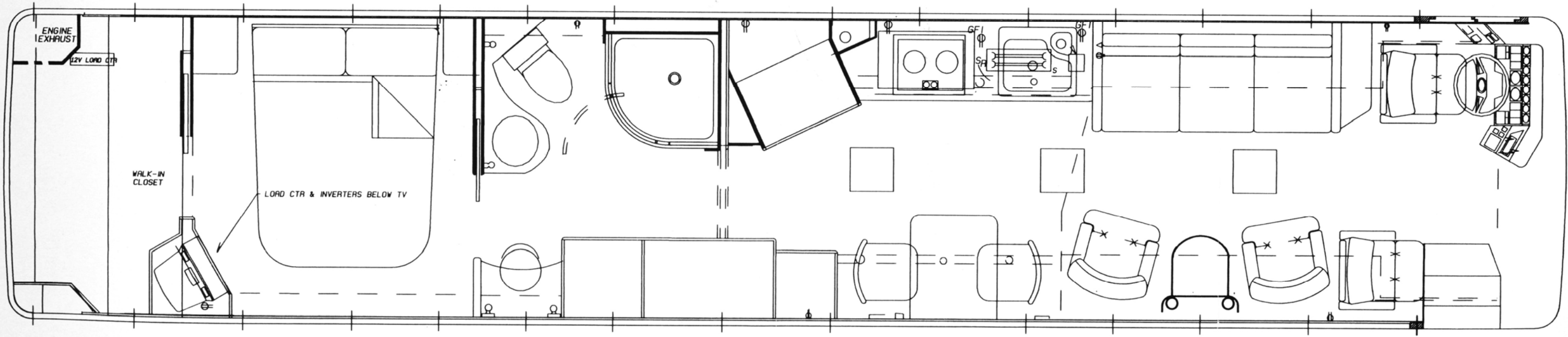


1997 43-1 WITH WALK-IN CLOSET

				Blue Bird Wanderlodge FORT VALLEY, GEORGIA, U.S.A.		SCALE B.0625
				FLOORPLAN, 43', WTOS, 1997 CROSS ISLAND BED		
				43-1		
				Engineering Order Entry 06/13/95 WMC		SIZE D
				Dealer/Owner		
LET	REVISIONS	ENGR	ORDER ENTRY	DATE	1997 43-1	



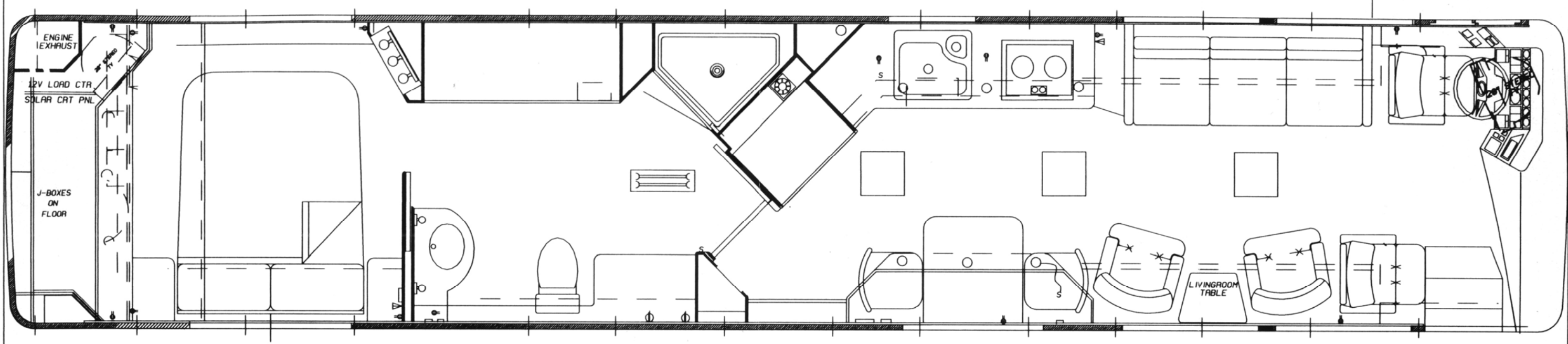
1997 43-2 WITH HANGING CLOSET



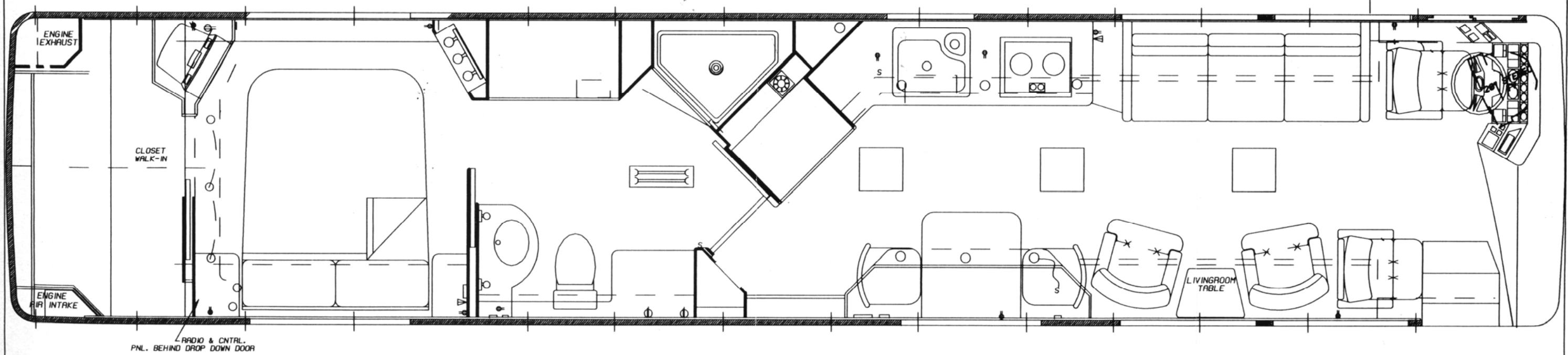
1997 43-2 WITH WALK-IN CLOSET

				Blue Bird Wanderlodge		SCALE
				FORT VALLEY, GEORGIA, U.S.A.		0.0625
				FLOORPLAN, 43', WTOS, CROSS ISLAND BED		
				43-2		
				Engineering	SIZE	1997 43-2
				Order Entry	06/13/96 WMC	
				Dealer/Owner		
LET	REVISIONS	ENGR.	ORDER ENTRY	DATE		



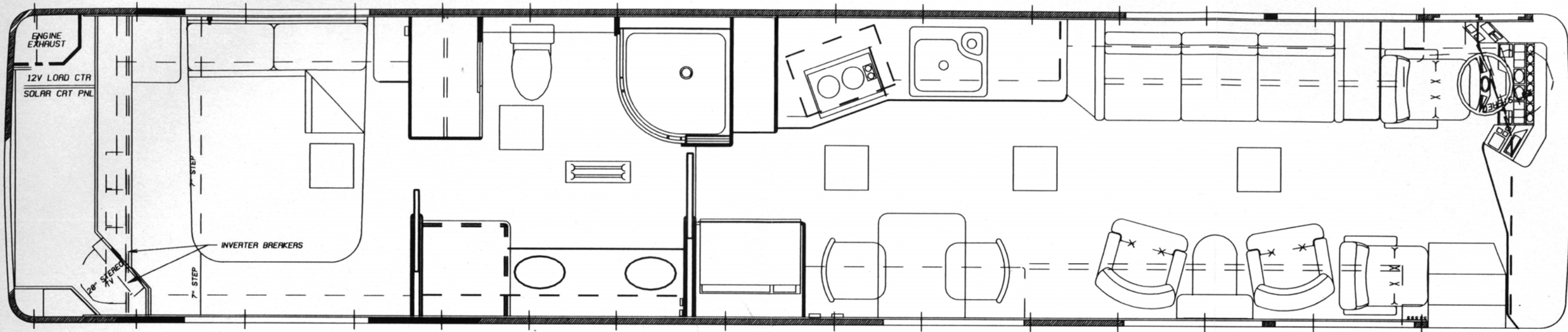


1997 43-3 WITH HANGING CLOSET

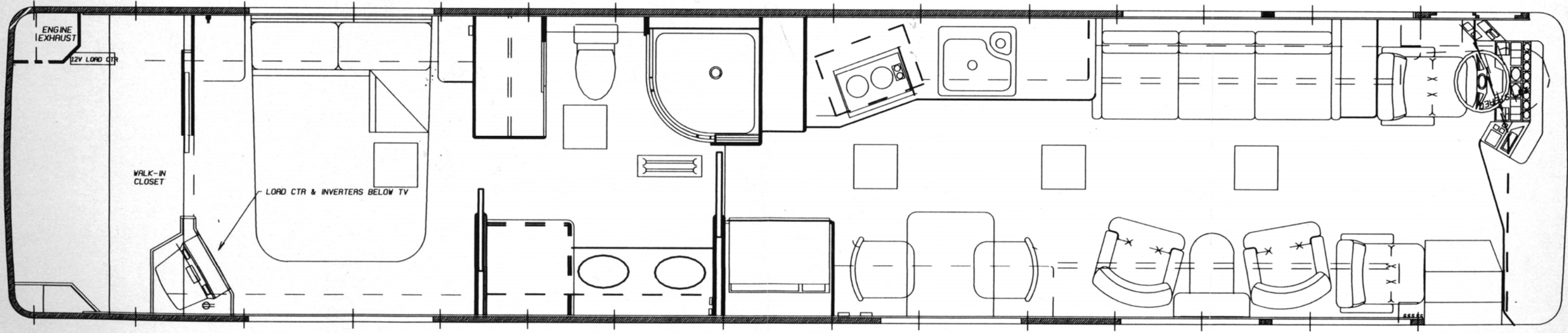


1997 43-3 WITH WALK-IN CLOSET

					Blue Bird Wanderlodge FORT VALLEY, GEORGIA, U.S.A.		SCALE 0.8625
					FLOORPLAN, 43' WLWB, 1997 WALK THRU DIAGONAL AISLE (WTDI)		
					1997 43-3		
					Engineering	DATE	SIZE
					Order Entry	6/13/96 WMC	D 1997 43-3
					Dealer/Owner		
LET	REVISIONS	ENGR.	ORDER ENTRY	DEALER/OWNER	DATE		

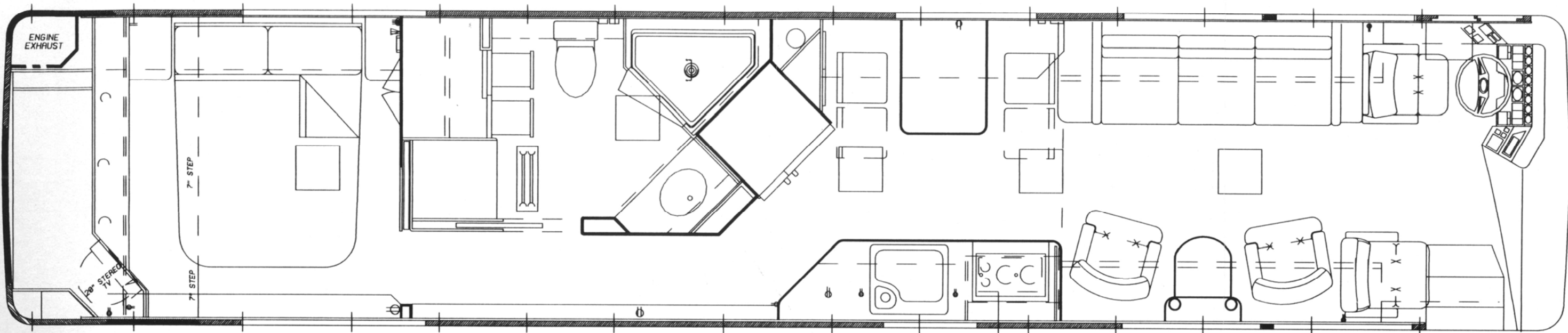


1997 43-4 WITH HANGING CLOSET

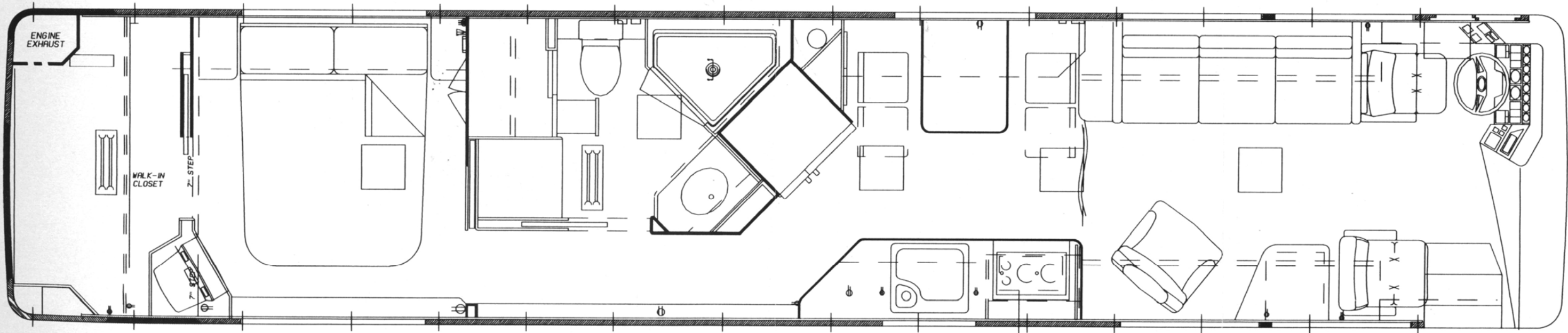


1997 43-4 WITH WALK-IN CLOSET

					Blue Bird Wanderlodge FORT VALLEY, GEORGIA, U.S.A.		SCALE 8.8625
					FLOORPLAN, 43' WTTS, CROSS ISLAND BED		
					43-4		
					Engineering		SIZE
					Order Entry 06/13/96 WMC		1997 43-4
					Dealer/Owner		
LET	REVISIONS	ENGR	ORDER ENTRY	DEALER/OWNER	DATE		



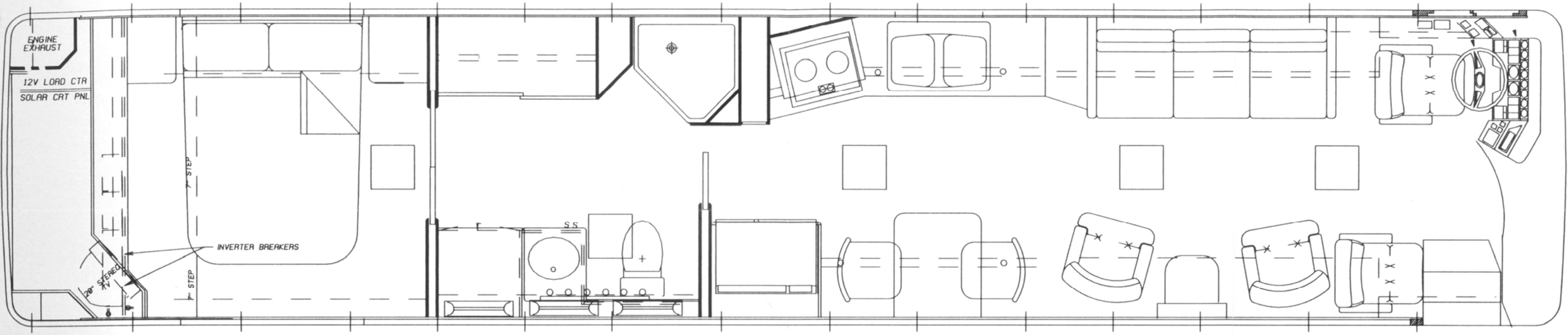
1997 43-5 WITH HANGING CLOSET



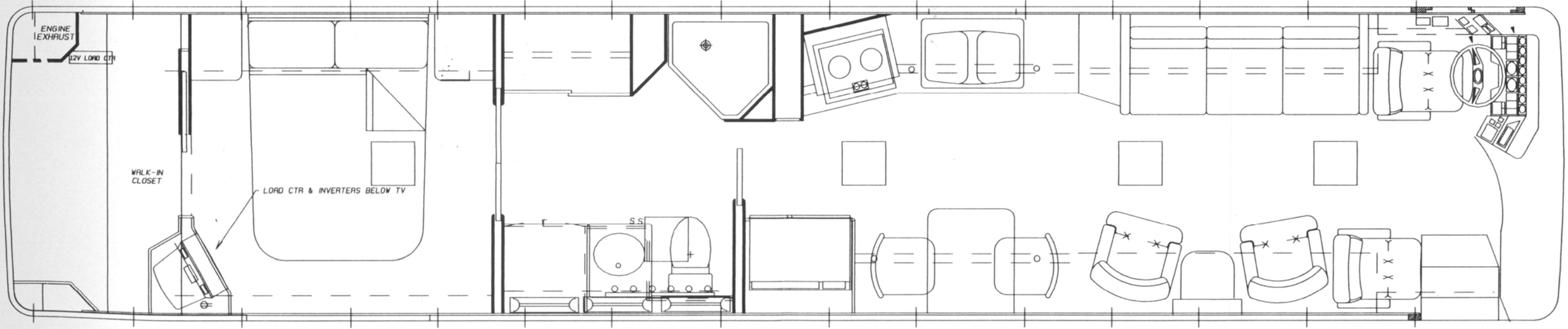
1997 43-5 WITH WALK-IN CLOSET

Blue Bird Wanderlodge		SCALE
FORT VALLEY, GEORGIA, U.S.A.		0.0625
FLOORPLAN, 43' WBSD, 259" WHEELBASE		
WIDE BODY SIDE DIAGONAL (WBSD)		
1997 43-5		
Engineering	SIZE	1997 43-5
Order Entry 06/12/96 DGH	D	
Dealer/Owner		



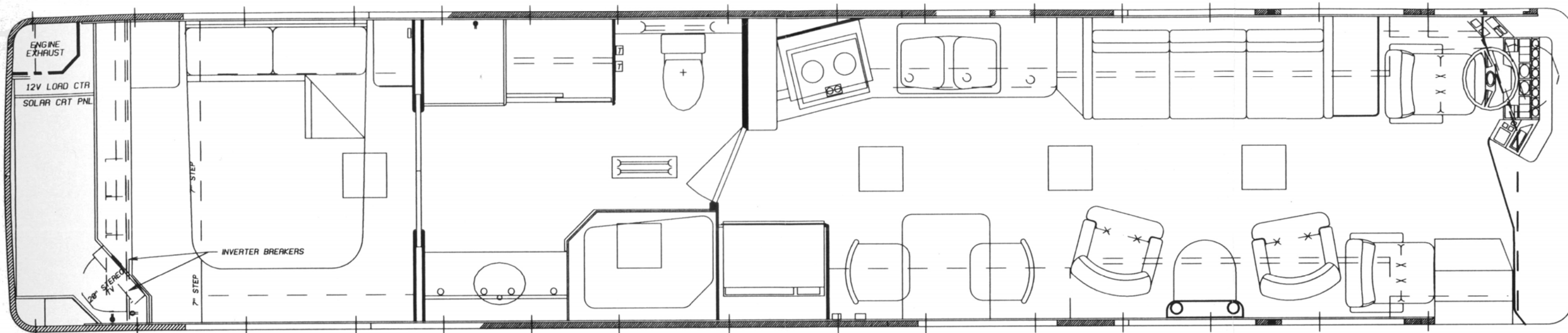


1997 43-6 WITH HANGING CLOSET

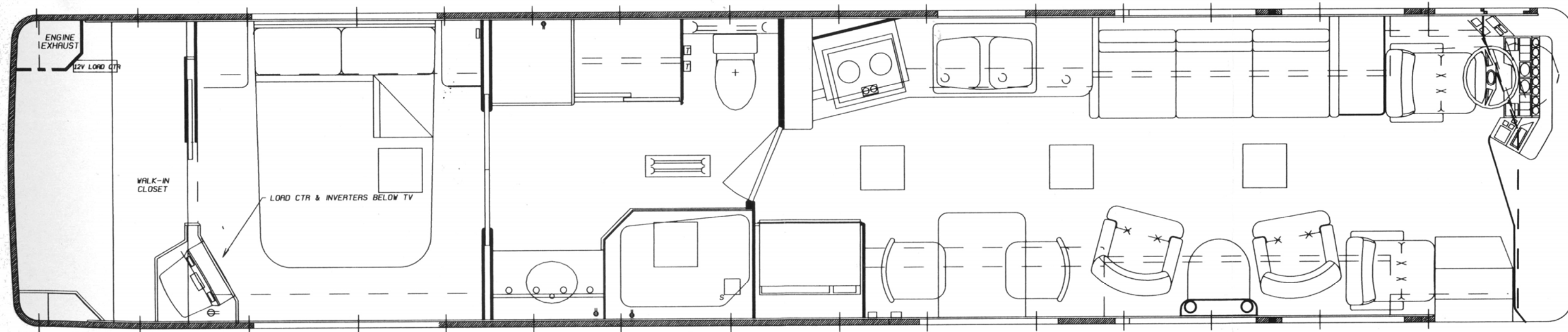


1997 43-6 WITH WALK-IN CLOSET

				Blue Bird Wanderlodge		SCALE
				FORT VALLEY, GEORGIA, U.S.A.		0.0625
				FLOORPLAN, 43', SPECIAL WALK THRU BATH		
				WITH CROSS-ISLAND BED		
				1997 43-6		
				Engineering	SIZE	
				Order Entry 6/27/95 DGM	D	1997 43-6
LET	REVISIONS	ENGR.	ORDER ENTRY	DATE		

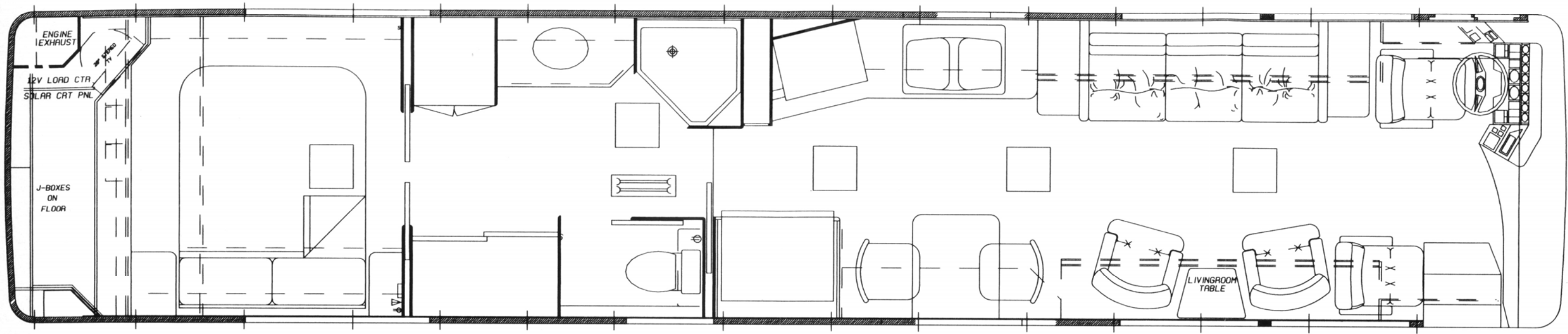


1997 43-7 WITH HANGING CLOSET

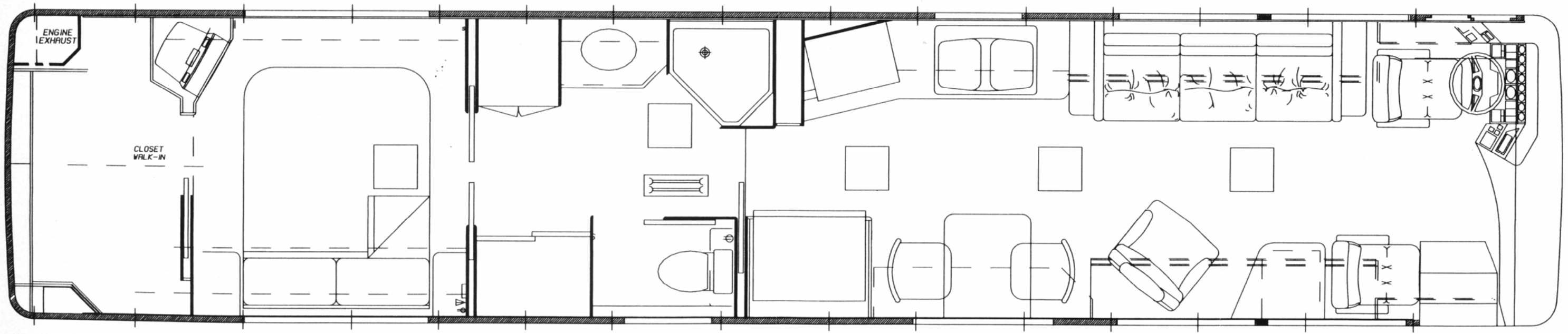


1997 43-7 WITH WALK-IN CLOSET

						Blue Bird Wanderlodge FORT VALLEY, GEORGIA, U.S.A.		SCALE 0.0625
						FLOORPLAN 43' WALK-THRU BATH WITH CROSS-ISLAND BED 43-7		
						Engineering Order Entry 6-13-96 DGM	SIZE D	1997 43-7
LET	REVISIONS	ENGR.	ORDER ENTRY	DEALER/OWNER	DATE	Dealer/Owner		



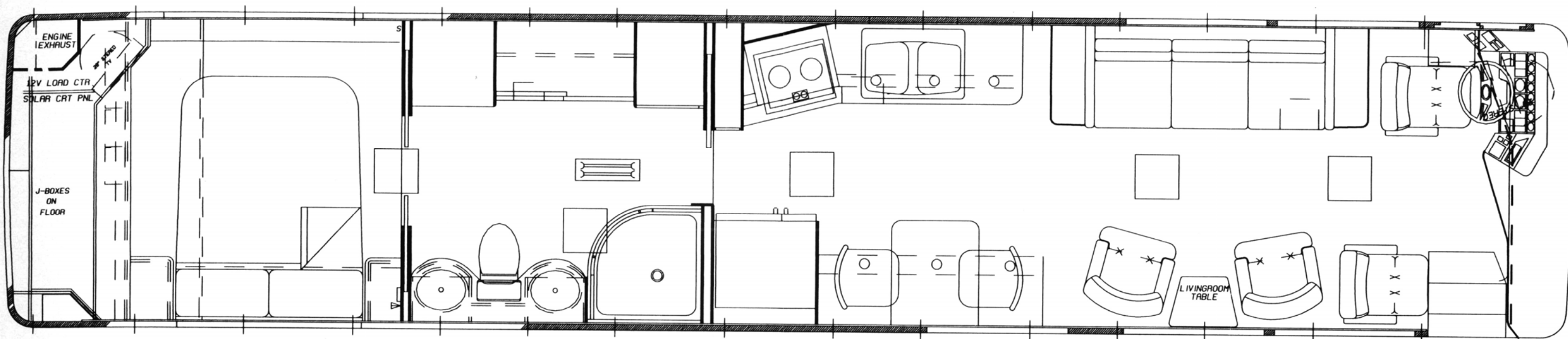
1997 43-8 WITH HANGING CLOSET



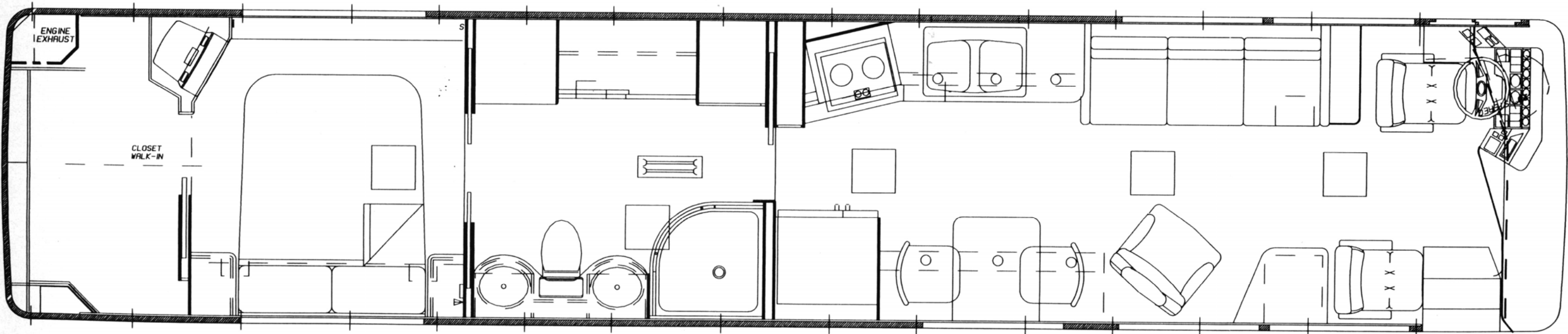
1997 43-8 WITH WALK-IN CLOSET

					Blue Bird Wanderlodge FORT VALLEY, GEORGIA, U.S.A.		SCALE 8.8625
					FLOORPLAN, 13' WTPT, CROSS ISLAND BED/PRIVATE TOILET		
					1997 43-8		
					Engineering	SIZE	1997 43-8
					Order Entry 86/14/96 WMC	D	
LET	REVISIONS	ENGR	ORDER ENTRY	DEALER/OWNER	DATE	Dealer/Owner	





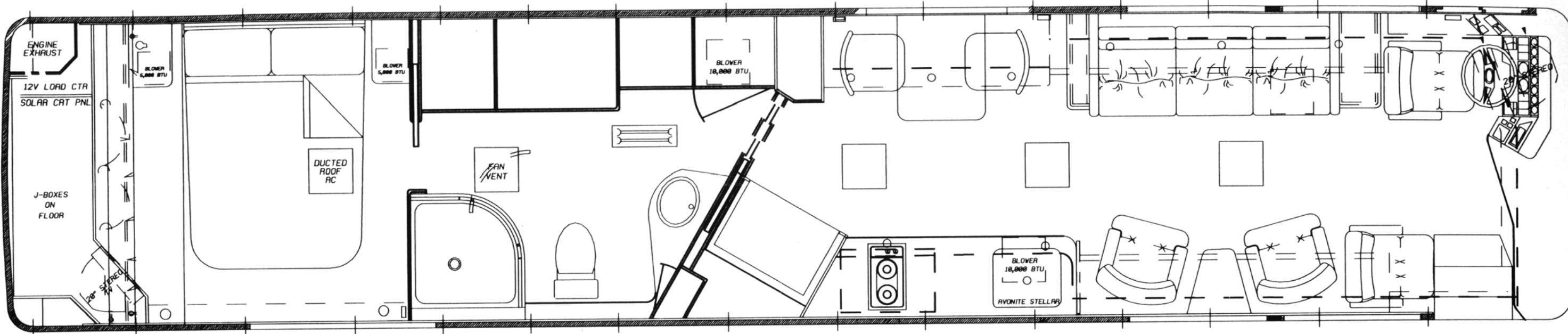
1997 43-9 WITH HANGING CLOSET



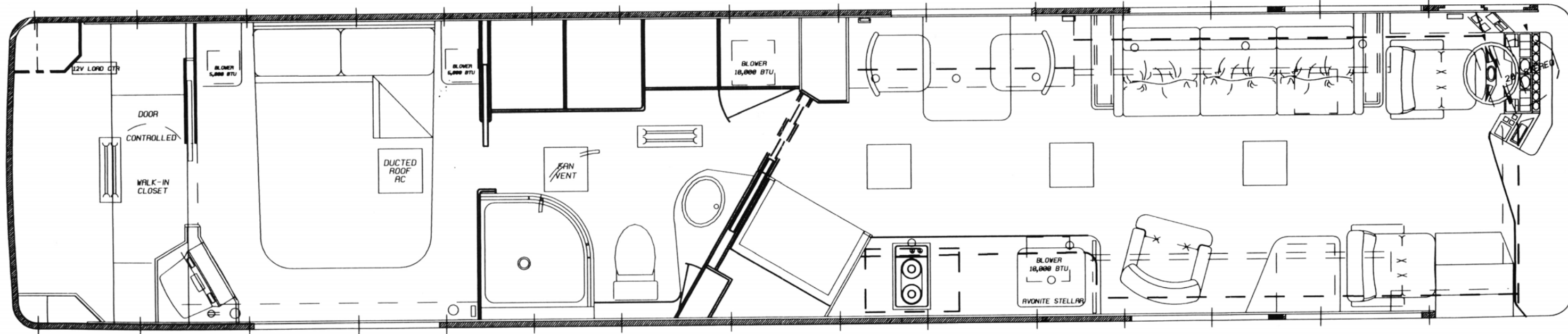
1997 43-9 WITH WALK-IN CLOSET

LET	REVISIONS	ENGR.	ORDER ENTRY	DEALER/OWNER	DATE

Blue Bird Wanderlodge		SCALE
FORT VALLEY, GEORGIA, U.S.A.		0.0625
FLOORPLAN, 13' WLWB, 259" WHEELBASE		
WTTS/43-9 WITH CROSS-ISLAND BED		
43-9		
Engineering	DATE	SIZE
Order Entry 6/15/96 WMC		D
Dealer/Owner		1997 43-9

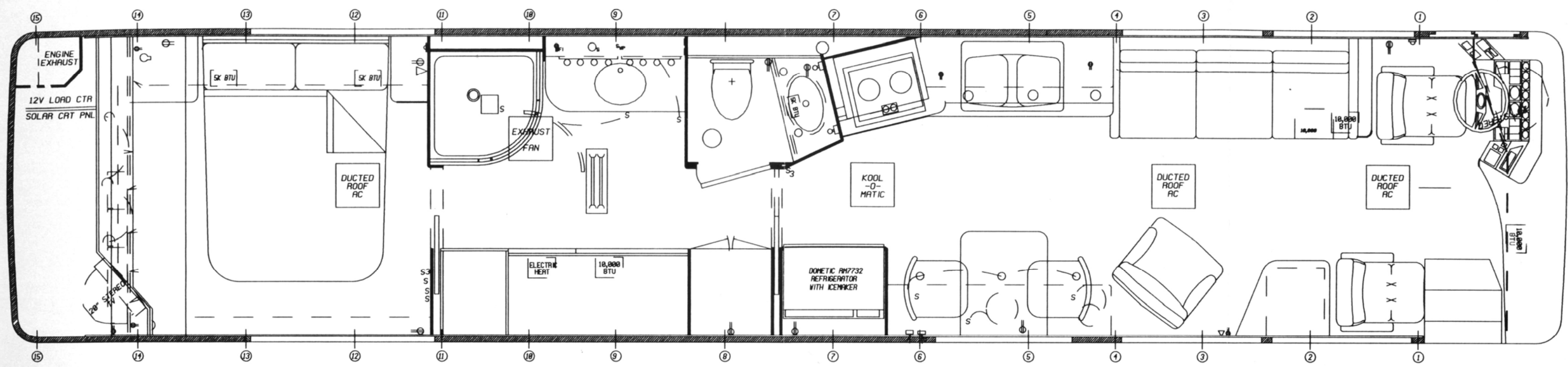


1997 43-10 WITH HANGING CLOSET

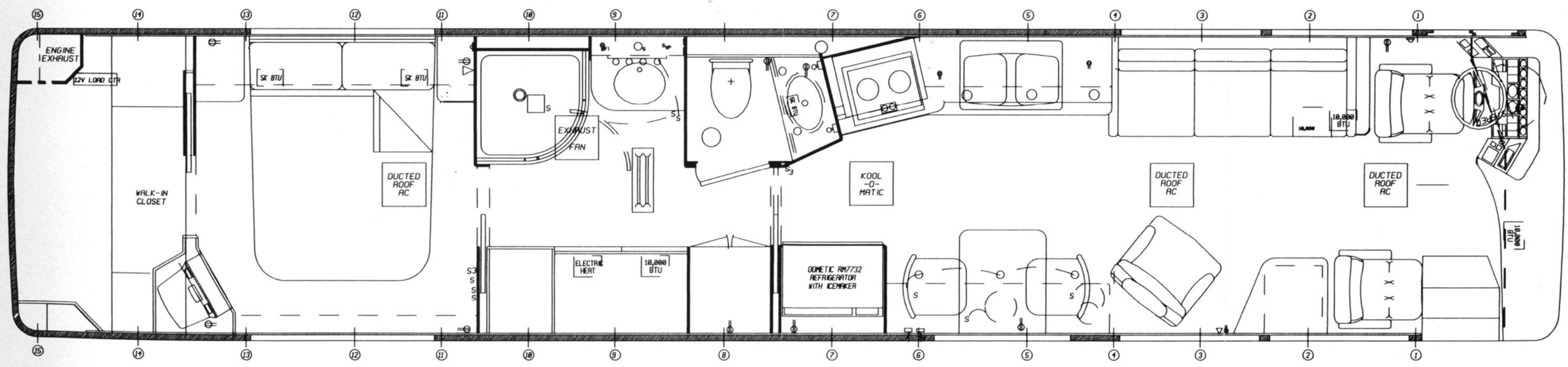


1997 43-10 WITH WALK-IN CLOSET

Blue Bird Wanderlodge		SCALE
FORT VALLEY, GEORGIA, U.S.A.		0.0625
FLOORPLAN, 43', WTOS, 1997 CROSS ISLAND BED		
43-10 REVERSED LAYOUT		
Engineering	SIZE	1997 43-10
Order Entry 6/12/96 DGM	D	
Dealer/Owner		



1997 43-11 WITH HANGING CLOSET



1997 43-11 WITH WALK-IN CLOSET

Blue Bird Wonderlodge		SCALE
FORT VALLEY, GEORGIA, U.S.A.		B.8625
FLOORPLAN, 43' WLWB, 259" WHEELBASE		
ANGLED PRIVATE TOILET		
1997 43-11		
Engineering	SIZE	1997 43-11
Order Entry 6/12/96 DGM	D	
Dealer/Owner		





BLUE BIRD

*Our Blue Bird Motor Home Sales Team:*

*Product reflecting our 1997 model change products are now arriving at the dealerships. For your convenience we have incorporated the sales data information for both the Wanderlodge and BMC products into one book.*

*By opening the book with the Wanderlodge cover facing you the data for both the 41' and 43' units will be at your fingertips. If you turn the book over with the BMC cover facing you the data for the 37' and 40' Blue Bird Motor Coach (BMC) will be accessible. All the information that you need to sell these very exciting new products should be within this publication. The items that are highlighted and preceded by an arrow indicates changes that are new to this model year.*

*Please look through this book carefully. If you have questions, please call. This is your selling tool. Take advantage of it.*

*Have a great 1997 model year!!*

*Sincerely,*

*Mary*

*Mary E. Hurley*

*Sales/Marketing Manager*

**BLUE BIRD WANDERLODGE®**

One Wanderlodge Way • Fort Valley, Georgia 31030 • (912) 825-2021

# 1997 BLUE BIRD WANDERLODGE

## 41' WANDERLODGE

### SECTION I-A

#### STANDARD EQUIPMENT

CHASSIS HIGHLIGHT.....1-3

### SECTION II-A

#### STANDARD EQUIPMENT

GENERAL .....1-2  
 BATHROOM.....3-4  
 BEDROOM.....5-6  
 CHASSIS.....7-10  
 ELECTRICAL.....11-14  
 EXTERIOR.....15-18  
 HEATING & AC.....19-20  
 KITCHEN/DINETTE.....21-23  
 LIVING ROOM.....24  
 MECHANICAL.....25  
 PILOT/COPILOT AREA.....26-28  
 WASTE.....29

### SECTION III-A

OPTIONAL EQUIPMENT.....1-10

### SECTION IV-A

FLOOR PLANS.....1-5

### SECTION V

EXT. PAINT DESIGNS.....1-3

### SECTION VI-A

RETAIL SELLING PRICE.....1-3

### SECTION VII

WARRANTY.....1

## 43' WANDERLODGE

### SECTION I-B

#### STANDARD EQUIPMENT

CHASSIS HIGHLIGHTS.....1-3

### SECTION II-B

#### STANDARD EQUIPMENT

GENERAL.....1-2  
 BATHROOM.....3-4  
 BEDROOM.....5-6  
 CHASSIS.....7-1  
 ELECTRICAL.....12-15  
 EXTERIOR.....16-19  
 HEATING & AC.....20-21  
 KITCHEN/DINETTE.....22-24  
 LIVING ROOM.....25  
 MECHANICAL.....26  
 PILOT/COPILOT AREA.....27-29  
 WASTE.....30

### SECTION III-B

OPTIONAL EQUIPMENT.....1-8

### SECTION IV-B

FLOOR PLANS.....1-11

### SECTION V

EXT. PAINT DESIGNS.....1-3

### SECTION VI-B

RETAIL SELLING PRICE.....1-3

### SECTION VII

WARRANTY.....1





*1997 Wanderlodge*

*\*Prices and/or specifications contained within this publication are  
subject to change without notice.*

# 1997, 43' WANDERLODGE

## CHASSIS STANDARD EQUIPMENT

### Accelerator (Series 60)

Electronic accelerator with transmission computer link up for precise shifting.

### Air Compressor

16.5 cfm capacity @ 1250 RPM, gear driven.

### Air Reserve

Five tanks with 1760 cubic inch capacity each and three tank with 1240 cubic inch capacity.

### Alternator

12 volt negative ground 300 AMP.

### Axles

14,600 lb.. front; 23,000 lb.. drive; single speed, 4.78 ratio; 13,000 lb.. tag; all wheel bearings oil lubricated.

### Battery

Three 12 volt 1075 CCA maintenance free batteries wired parallel.

### Brakes, Emergency

MGM 36" magnum piston type brake system with treadle valve control - separate instrument panel mounted valve provided for parking.

### Brakes, Anti-Lock

A Bendix four channel system which controls the steer and drive axle system along with a standalone single channel system for the tag axle.

### Drive Line

Spicer 1810 series

### Electrical System

12 volt

### Engine

Detroit Diesel Series 60, 500 HP

### Exhaust System

16 gauge aluminized steel with heavy duty muffler (6 inch diameter, inlet and outlet)

### Fuel Filter

Racor fuel filter water separator and pre heater

### Frame

Channel 10 1/8" high with 3 1/2" flanges made of 5/16" thick, 50,000 psi minimum yield steel. Channels doubled in high stress area.

### Fuel Tank

300 gallon capacity

### Gross Vehicle Weight Rate

GVWR unavailable from engineering at time of printing.

### Horn

Electric dual

### Instrument and Gauges

Speedometer, odometer, amp meter, fuel level, oil pressure, water temperature, low air pressure gauges and low pressure warning light and buzzer for dual brake system, tachometer, air pressure gauge for tag air suspension system, pyrometer and

# 1997, 43' WANDERLODGE

## CHASSIS STANDARD EQUIPMENT

boost gauge, engine oil temperature, and transmission oil temperature.

### Shock Absorbers

Direct acting, double action piston type; front, drive, and tag

### Suspension

Ridewell air suspension, 14,600 lb.. front, 23,000 lb.. drive and 13,000 lb.. tag. Front and drive systems utilize 4 air springs each tag system utilizes 2 air springs.

### Steering Gear

Ross model TAS-85 with 23.3 to 1 ratio with integral power steering.

### Tires

Tubeless 12R-22.5-H 16 ply rating Michelin steel cord radial with XZE tread, single front, dual drive and single tag turned to the outside.

### Wheels

10 stud disc with 22.5 x 8.25 rims, polished aluminum, single front, dual drive, and single tag turned to the outside.

### Jacobs Retarder

An engine brake retarder integral in the head of the Series 60 engine, with three levels of brake capacity.

## ENGINE SPECIFICATIONS

### Make

GM Detroit Diesel Series 60, 500 HP

### Type

Four cycle, in line Turbo/Air to air charger cooled.

### Number of Cylinders

Six cylinders

### Stroke and Bore (inches)

5.12 x 6.30 inches

### Displacement

778 cubic inches (12.7 liters)

### Compression Ratio

15.0 to 1

### Max. (net) BHP @RPM

500 HP (373KW) /2100

### Max. (net) Torque @RPM

1450 lb.. ft. @ 1200

### Max. Gov. RPM

Load 2100 RPM

No load 2225 RPM

### Governor

Type, electronic

### Piston Material

Two piece cast iron cross head piston

### Crankcase Capacity

Dry 34 quarts

Refill 32 quarts

### Cooling System Capacity

Includes:

-Engine

-Radiator

-SGM HTR/Defroster

-Aqua Hot system & all pipes

91 qt..



# 1997, 43' WANDERLODGE

## CHASSIS STANDARD EQUIPMENT

### Water Pump Capacity @ Engine

#### RPM

113 gallons per minute

#### Air Filter

Dry type - FARR ECO-SM 99842-007,  
single storage, disposable canister.

### Transmission

Allison HD4060 electronic 6 speed World  
transmission

#### Gears

First

Second

Third

Fourth

Fifth

Sixth

Reverse

Torque Converter TC-541-1.9 stall ratio

Lubricant Cap.

Bell house size

Drive line

#### Ratios

3.51

1.91

1.43

1.00

0.74

0.64

4.80

37 qt.. refill

SAE #1

1810 Spicer

### Turning Radius

#### Wheel base

259" - front axle to drive axle

50" - drive axle to tag axle

#### Curb Radius

39' 3" with tag down

35' 11" with tag up

Lifting the tag decreases the turning radius  
by 8.9%.

\* Curb radius is the minimum radius of  
turn to the outside edge of the front tire.

### Liftable Tag

Tag axle may automatically be raised at  
speeds below 15 mph to enable shorter  
turning radius and less wear of the tag  
tires.

# GENERAL

1997, 43 FT. WANDERLDOGE

## Owner Delivery Process

*The owner delivery process is a service offered to owners taking delivery at the factory. It's purpose is to train owner in the use of a Wanderlodge motor home by a factory trained professional.*

## General Statement About Interior

*Interiors will be a stained oak wood which will consist of the following items. Walls will be wood or wallpaper. Cabinets will be wood (with the exception of the living room overhead cabinets which will be wrapped in vinyl). All table tops, kitchen counter, and dinette table will be a solid surfacing material with brass inserts.*

## Fixtures

*Switches/receptacles are tapeeze type. These will be covered in wallpaper where applicable and matched as close as possible in other areas. Light fixtures and bath accessories will be gold colored or brass.*

## Carpet

*Carpet is standard for all areas of the coach except*

*the bathroom and kitchen. In addition loose carpet mats are included to be used on the steps.*

## Drapes, Electric

*The bedroom drapes are operated from switches located in the bedroom control panel. Drapes are operable from a 120 VAC source (shoreline, generator , or inverter).*

## Fire Extinguisher

*Two dry chemical type extinguishers with a gauge are provided. One is located in the living area of the coach and another is located in an exterior compartment.*

## Headliner, Rolled and Pleated

*The headliner consists of individually wrapped panels attached to the ceiling substrate with panel clips. Each panel is wrapped with vinyl on one-fourth inch thick polyethylene foam. These panels are removable for replacement or repair. These panels will be in the ceiling of the living area only. Panels will run length wise of the coach. Ceilings of closets (with the exception of the rear walk-in closet), cabinets, etc. will have cargo type carpet glued in place.*

# **GENERAL**

1997, 43 FT. WANDERLDOGE

## **LPG Leak Detector System**

The gas leakage detector sounds and alarm and closes down the main LPG supply in the event of an LPG leak. This unit does meet California requirements.

## **Smoke Detector**

A smoke detector is installed in the ceiling of the main living area.

## **Carbon Monoxide Detector**

A carbon monoxide detector is installed in the living area.

## **Vacuum Cleaner, Roll-A-Bout**

A portable roll-a-bout vacuum cleaner with a flexible hose and wand, carpet, upholstery, and crevice attachments are placed loose in closet.

## **Windows**

(4) living room, (1) dinette, (2) bedroom, and (1) kitchen  
Horizontal single sliding, aluminum sash windows with spring loaded latches, 6% light transmission tinted, laminated glass.

↪ Horizontal single sliding, aluminum sash windows are provided for the pilot and copilot areas. The forward non sliding section of the glass is equipped with defroster strips tied into heat switch on outside rearview mirrors.

## **Safe**

A key lock safe is standard and is mounted in an inconspicuous place.



# **BATHROOM**

1997, 43 FT. WANDERLODGE

## **Ceramic Tile, Bathroom Floor**

*12 inch x 12 inch ceramic tile is installed on the floor on a diagonal. Tiles from the Laufen Charleston series or Florida Tile's Natura Serene series will be standard. Other tiles selected will be billed for the difference.*

## **Fantastic Fan With Rain Sensor**

*A remote switch, painted wood frame, and sliding cover are provided. The vent will automatically close when moisture is detected.*

## **Lighting**

*Opera light or lights are provided (depending on floor plan) over vanity. These lights are 120 VAC. A 12 volt thin light is mounted in bathroom ceiling.*

## **Medicine Cabinet**

*Configuration of cabinet is determined by the individual floor plan. Doors will have safety backed mirror. Interior will have adjustable shelves with anti-tip lips. A minimum of one 12 volt bullet light and one 120 VAC, GFI receptacle is provided.*

## **Shower Stall or Tub/Shower**

*The shower stall will have a fiberglass pan with nonskid bottom and color coordinated cultured marble walls with built in soap dish.*

*The tub/shower will be fiberglass with nonskid bottom and fiberglass tub surround with soap dish.*

*Each will contain a stationary shower head with a personal shower wand on an adjustable slide bar.*

*Glass tub enclosure (clear safety glass) with a travel latch on the glass door.*

*A 12 volt DC ceiling light fixture is mounted in the ceiling.*

## **Toilet, Microphor**

*The Microphor toilet will be 12 volt electric or air flush depending on the location, per individual floor plans.*

## **Vanity Top and Bowl**

*The vanity top and bowl are a molded one piece cultured marble. A gold colored single lever faucet is standard.*

# **BATHROOM**

*1997, 43 FT. WANDERLODGE*

## **Mirror, Full Length**

*Each bath arrangement will contain at least one full length mirror. Wardrobe doors will be mirrored.*

## **Accessories**

*Included in each unit are the following accessories:*

- (1) Toilet tissue holder*
- (2) Single towel bar*
- (1) Double towel bar*
- (1) Robe hook*
- (2) Towel rings*

# ***BEDROOM***

1997, 43 FT. WANDERLODGE

## **Bed Arrangement, Standard**

*A 60" X 76" foam mattress tapered with 10" radius corners is standard. A quilted bedspread with fitted skirt and a reverse flap (French flap) and pleated drapes with electric drape motors are standard. Two bed pillows are included. A wood headboard to match the oak is also standard.*

## **Bedroom Control Panel**

*The bedroom control panel contains the following:*

- 1) Generator start/stop switch*
- 2) Light switch to control the aisle lights*
- 3) Security switch controls entrance door electric dead bolt lock and landing lights for exterior lighting.*
- 4) Alarm clock*
- 5) Electric drape switches*
- 6) Security system panic switch*

## **Audio Visual**

*A 20 inch remote control color cable ready television and an AM/FM cassette radio is standard in the bedroom.*

## **Indirect Fluorescent Lighting**

*Upper 120 VAC lights in side valance. These lights are*

*controlled by a switch on the bedroom wall.*

## **Rear Davenport or Walk-in Closet**

*A rear dresser arrangement with full length hanging rod, cedar lining on back wall with carpet floor and side walls are standard. A 12 VDC light fixture in ceiling with automatic switching is standard. (2) swinging doors with safety backed mirrors.*

**OR**

*↵ A walk-in closet with full hanging across the back, drawer cabinet on one side and shelves on opposite side (depends on floor plan). Closet will be carpeted with floor carpet used in remainder of bedroom and a standard vinyl ceiling. Interior of closet will be wood or laminate depending on material used in remainder of bedroom.*

## **Night Tables**

*The night tables are a stained oak with solid surfacing material for tops with a brass insert.*

## **Storage, Under Bed**

*The 43 ft. Wanderlodge provides full storage underneath the*



# ***BEDROOM***

*1997, 43 FT. WANDERLODGE*

*bed. This storage is accessed with the assistance of gas cylinders.  
This area is carpeted with the floor carpet selected for the  
remainder of the bedroom.*

## **Overhead Cabinet**

*A full length overhead cabinet is installed over the head of  
the bed.*

# CHASSIS

1997, 43 FT. WANDERLODGE

## Air Brake System

*This motor home is equipped with dual service air brake systems for front, rear, and tag axle brakes, with integral fail-safe operation; and manual/automatic rear spring (parking) brakes. The service brakes are completely independent systems, each including a reservoir and separate distribution lines and valves. The reservoirs are pressurized from a single compressor. Both service brake systems are brought into operation each time the brake treadle is depressed to slow or stop the coach. Reservoir pressure for each service brake system is monitored by a respective pressure gauge on the front panel; system failure(s) are indicated by low pressure readings, illumination of the low air failure lamp and sounding of a buzzer.*

*To compensate for normal lining wear, each brake system is individually self-adjusting.*

*If a failure occurs in the rear, the front service brakes and rear spring brakes provide braking action.*

*In the unlikely event a failure where both service braking systems are disabled, the rear spring brakes will apply automatically and bring the vehicle to a stop.*

*In addition to the above, a four channel anti-lock brake system for the steer and drive axles and standalone*

*single-channel anti-lock brake system for the tag axle are installed. In the event one of the wheels begin to lock up under severe braking conditions, the anti-lock system will detect this situation and gradually remove air pressure from the brake chamber until the wheel begins to turn. This will help assure smooth braking action and minimize wheel lockup.*

## Air Dryer, Compressed Air System

*The air dryer unit collects and removes moisture and contaminants from the compressor air output before the air reaches the reservoirs. This unit is different from a reservoir drain or an after cooler in that it provides condensation in the system reservoirs. Note that each reservoir also has a long maintenance free life for air brake system components due to the removal of system contaminants.*

## Air Schrader Valve

*An air connection is provided in the engine compartment to allow the air system to be pressurized from a "shop" source without the necessity of starting the engine.*

## Air Suspension

*This motor home is equipped with air suspension bags*

# CHASSIS

1997, 43 FT. WANDERLODGE

*which cushion the front, rear, and tag axles. Dumping these air bags when the vehicle is parked allows the rubber bumpers to come together and eliminate vehicle springiness. Switches in the driver's area control dumping and filling of the respective air bags.*

*A light in the driver's area illuminates to warn the driver that the system is dumped and not to drive the vehicle until the suspension is inflated.*

## *Cruise Control, Integral W/DDEC III*

*A driver controlled speed control which is integral with the Detroit Diesel DDEC III engine control. Controls are located on the shifter panel.*

## *Diesel Fuel 100 Gallons for Delivery*

*100 gallons of diesel fuel is installed in Fort Valley prior to delivery of unit.*

## *Emergency Warning Triangle Kit*

*This kit includes (3) fold out, reflective, red triangles in a plastic case with instructions for use.*

## *Engine, Detroit Diesel Series 60, DDEC III*

↳ *500 HP, Series 60 Detroit Diesel. See Chassis specs in front of book for detail information.*

## *Fire Alarm, Automatic, Engine Compartment*

*This feature alerts the pilot of excessive temperatures in the engine compartment via sensors in the engine compartment and a visual and audible warning in the pilot's area.*

## *Engine Starting Remote*

*A separate key switch is located in the engine compartment to allow the engine to be started remotely. The switch is housed in a weather proof box.*

## *Fuel Filter, And Water Separator, Racor*

*A Racor fuel filter, water separator/preheater is incorporated in the diesel fuel supply line and processes the fuel supply for maximum purity. The fuel filter also includes a built-in pre heater which operates thermostatically from the 12 volt battery supply when the ignition is on. A water sensor lights*

# CHASSIS

1997, 43 FT. WANDERLODGE

*the dash indicator when the water level in the filter bowl is high enough to require drainage.*

*The Racor gauge shows the condition of the Racor filter in terms of fuel line vacuum. High vacuum readings indicate when the filter element requires changing. This gauge is located in the pilot overhead dash.*

## Fuel Tank, 300 Gallons

*The diesel fuel tank is located between the chassis frame rails in the midsection of the coach. A "low fuel" level indicator and a contamination indicator included in the copilot overhead dash. Dual fuel fills, one on each side of body is provided.*

## Generator, 15 KW, Diesel Powered

*The generator is driven by a 4 cylinder water cooled diesel engine and is located in a sound proof compartment between the chassis frame rails at the front of the coach. The engine/generator set is mounted on a motorized roll out carriage using vibration isolators with a telescoping exhaust system.*

*The carriage is powered in and out of the compartment for service by a 12 volt electro-mechanical linear actuator. Starting/stopping of the generator may be controlled from one outside or three remote locations.*

- 1) From the pilot overhead dash*
- 2) From the kitchen galley panel*
- 3) From the bedroom control panel*

*Remote gauges are included on the pilot overhead dash to monitor the generator operation.*

↪ *The generator has an alternator and 12 volt battery for cranking the generator. There is also an auxiliary generator battery switch on the dash which will permit starting the generator in the event that the generator battery becomes discharged. This cranking power is obtained from the house battery system.*

## Auto Start

*The generator is equipped with an auto starting system that monitors the coach battery voltage as well as 120 VAC power. When the coach battery voltage drops below a set voltage point, the generator will start up and provide power to the battery chargers to charge the batteries. In addition, if the system detects a condition of low AC or no AC voltage (depending on system switch setting), the generator will start up and provide AC power to the coach.*



# CHASSIS

1997, 43 FT. WANDERLODGE

## Heater, Engine Block

A 120 volt element that heats water in the engine block. On-off operation is controlled by a switch located in the kitchen base cabinet.

## Hitch, Trailer, Receiver Type

10,000 pounds of towing capacity and 1,000 pounds tongue weight capacity receiver type hitch.

## Hitch, Trailer Draw bar

Removable receiver type draw bar with 2" diameter chrome hitch ball. The 2" ball provided is rated at 5,000 pounds.

## Hooks, Tow

Two tow hooks are located at the front of the coach.

## Mud Flaps

Individual rubber mud flaps with Blue Bird logo, are

installed at the rear of the front tires with a full width mud flap behind the rear tires.

## Quick Start Aid

A remote switch on the dash operates the ether injection system to aid engine starting in cold weather.

## Retarder

An engine retarding system is utilized and will provide three levels of engine braking capacity. (Jacob's Brake)

## Tires, 12.00R x 22.50 on Forged Aluminum Wheels

See details in chassis specs in front of book.

## Trailer Plug

The female receptacle is installed in the rear of the coach and wired into the electrical system. The male portion is supplied loose in the coach for installation by the owner on the tow vehicle.

# CHASSIS

1997, 43 FT. WANDERLODGE

## Liftable Tag

↗ A liftable tag is provided.

## Wheel Saver

A plastic wheel saver is located in an outside compartment. This disc is to be used when removing or torquing lug nuts on wheels.

# ***ELECTRICAL***

*1997, 43 FT. WANDERLODGE*

## **A/T Switch**

*The A/T switch on the upper dash controls all 12 volt circuits except the digital clocks, monitoring panel and burglar alarm. This switch allows power to be shut off to all 12 volt circuits except as noted to conserve battery. This switch also serves as an anti-theft switch.*

## **Alternator, 300 Amp**

*This unit is equipped with a 12 volt negative ground 300 AMP alternator. The bearings of this alternator are oil-cooled. An alternator/charger AMP gauge located on the upper dash indicates the output current. When parked with a source of shoreline power, the gauge indicates the total output of the battery chargers.*

## **Antenna, TV, Power**

*The TV antenna is roof mounted and remotely rotated by controls located in the overhead dash and in the bedroom. These switches are wired parallel. An audible and visual warning on the copilot overhead dash panel is provided when the antenna is not retracted and ignition key is turned on.*

## **Batteries, Chassis, 12 Volt Maintenance Free**

*Three 12 volt 1075 CCA maintenance free batteries wired parallel produce power for starting the coach engine.*

## **Battery Chargers, (2) 140 AMP**

☞ *Two 140 AMP battery chargers (integral with the Trace 3000 inverters) operate when a source of 120 volts of AC is supplied either from shoreline or generator and the inverters are turned on. The chargers are connected to the coach batteries. The engine batteries may also be charged by enabling the auxiliary battery switch on the lower dash.*

## **Battery, Generator**

☞ *A separate battery is installed for starting the generator*

## **Burglar Alarm System**

☞ *An intruder alarm system protects windows and entry door. Microphone sound sensors that detect glass breakage (located in various areas of coach). Panic switch located in bedroom panel enable siren at anytime. System is enabled with small key chain wireless transmitter.*

# ***ELECTRICAL***

1997, 43 FT. WANDERLODGE

## **Cable Connection & Cable for Cable TV Hookup**

*The utility compartment includes a connection for cable TV hookup.*

## **Chime, Door, Musical**

*A multi tune electronic door chime, which can be preset, is provided. A button is provided on the outside of the coach adjacent to the entrance door for operation.*

## **Electronic Master Switch**

*An electronic master switch is located in left front overhead storage compartment. This switch allows the 12 volt DC circuits in the coach, which are not controlled by the A/T switch, to be disabled thus avoiding draining the batteries when the coach is not in use.*

## **Battery Cutoff Switch**

*A battery cutoff switch is located in the engine compartment in the shunt panel area which will disconnect the house batteries and minimize current drain for storage purposes.*

## **Freezer, Wiring Only**

*12 volt DC/120 volt AC receptacles are located in an outside storage compartment.*

## **Inverters, (2) 3000 Watt With Integral Battery Chargers**

*Two 3000 watt Trace inverters with integral chargers are located in the right rear compartment. The inverters will power all accessible outlets in the coach as well as the ice maker, televisions, microwave oven, opera light, refrigerator, and 120 volt fluorescent lights as long as the power demand is below 6000 watts. There are two remote control panels for control and status of the inverters located adjacent to pilot seat.*

*Note: Two air conditioners are wired to the inverter circuit. However, only one will be permitted to operate at a time.*

## **Load Center**

*The load center is 50 amp capacity @ 240 VAC. The load center is located in the rear davenport area.*

## **Monitors, Power Line, 120 VAC**

*A dual power line monitor is located on the copilot overhead dash panel, to monitor the voltage in both legs at the AC shoreline*

# ELECTRICAL

1997, 43 FT. WANDERLODGE

supply (or generator supply). The monitors have a polarity and ground detector circuit to indicate possible electrical hazards due to incorrect hookup.

An additional power line polarity monitor is located in the shoreline/utility box.

## Outlets, Land Line Phone

Two outlets are provided and are wired to the female plug in the utility compartment. Outlets are on the wall next to living room table and near bedroom night stand.

## Power Cords

Approved power cords supply the coach for hookup to external power sources. Each cord has a ground pin which provides proper electrical system grounding. A storage shelf for power cords is provided in an outside compartment.

<u>QTY.</u>	<u>Female/Male</u>	<u>Volts</u>	<u>Length</u>
1	50amp/30amp	120	1.5 ft.
*	130 amp twistlock/30 amp	120	25 ft.
2	30 amp/20 amp	Adapter	NA
1	50 amp	250	25 ft. fixed

230 amp/30 amp ext. 120 25 ft.

In addition to the fixed 50 amp power cord, the coach also includes a 30 amp service hookup.

Note: Due to regulations, this connection and cord are not supplied on California coaches.

## Split Battery Power System

Three separate battery systems are provided.

- 1) Coach battery system
- 2) Chassis battery system
- 3) Generator Battery system

The coach battery system supplies 12 volt power for all interior items and exterior lighting. The chassis battery system provides power for engine cranking and ignition. The two systems are tied together only by the auxiliary battery switch on the lower dash and when the alternator is charging. The generator battery provides power for generator cranking and is charged by an alternator or the generator. A generator auxiliary battery switch is provided to permit cranking the generator in the event that the generator battery becomes discharged. This power is provided by the house battery system.

## Spotlight

A remote control high intensity spot/flood light with dual



# ***ELECTRICAL***

*1997, 43 FT. WANDERLODGE*

*high output sealed beam lamp producing 200,000 candle power is installed on the roof and can be positioned horizontally or vertically. Controls are located in the pilot overhead dash panel.*

## ***Wiring, Cellular Phone With Antenna***

*An antenna and wiring is supplied for the customer to hookup a cellular phone. The antenna is roof mounted. Wiring terminates in the driver's area.*

## ***Safeline Alarm***

*An audible and visual alarm in the driver's area that is activated when the ignition key is turned on if the coach is connected to shoreline power.*

## ***Polarity Indication Panel***

*Actual power line monitor located in the utility compartment that monitors the AC voltage of both legs of the AC shoreline supply. The panel indicates reverse polarity or missing ground connections.*

# ***EXTERIOR***

*1997, 43 FT. WANDERLODGE*

## ***Air Outlet Auxiliary***

*An auxiliary air outlet from the chassis accessory air tank is located in an exterior storage compartment. An air hose and gauge is included.*

## ***Awnings, Zip Dee Package***

*A patio awning as well as window awnings are included as standard. This also includes four Zip Dee chairs and two add a lounges.*

## ***Base Color, Indian Silver***

*Indian silver is the standard base color. Any other base may be used if specified three weeks before line load at Wanderlodge.*

## ***Bumpers, High Strength Aluminum With ABS***

*Bumpers are made of structural steel in front and aluminum in back with high impact ABS facade, painted to match paint design.*

## ***Fenders, Fiberglass Painted***

*The fenders are painted to match the accent colors of the*

*coach.*

## ***Grill, Electric***

*The electric grill is located in an exterior compartment on a slide-out tray. A dedicated receptacle provides power to the grill only when the grill is fully extended. A sensor is located in the slide mechanism to minimize the chance of storing the grill with power applied to the grill temperature control.*

## ***Handle, Assistance Entrance Door***

*The entry door assist handle is located on the exterior of the coach to the left of the door. The assist handle is a clear acrylic handle which is lighted when the RH porch light is on. Assist handles are also located on the interior of the coach on each side of the step well.*

## ***Horns, Air***

*Dual horns with covers are roof mounted, one on each side of the coach. Horns are activated by a foot switch in the driver's floor board or by the horn button.*

## ***Lights, Landing, Left and Right Side***

*The 12 volt DC recess mounted lights are located at the front*

# ***EXTERIOR***

*1997, 43 FT. WANDERLODGE*

*and rear of the coach on both sides. Switches are located on the lower dash.*

## ***Light, Porch***

*Two amber, double bulb fluorescent lights are located on the right hand side of the coach. One amber, double bulb fluorescent light is located on the left hand side of the coach. The lights are operated by switches on the entrance door control panel and a switch in the utility box.*

## ***Lights, Driving***

*Clear driving lamps are mounted stationary in the front bumper. The driving lights illuminate on high beam provided the corresponding dash switch is active.*

## ***Lights, Parking, Rear***

*These lights operate when the switch located on the lower dash is activated and the vehicle is in reverse gear.*

## ***Luggage Compartments***

*The luggage compartments are lined with carpeting on floors and vertical walls. Luggage compartments include lights which*

*are activated by the individual door switches. The doors are parallelogram type and are gas spring operated.*

## ***Step, Entrance Door, Air Operated***

*The air operated entrance door step extends when the door is open and retracts when the door is closed. A rubber covering is over the entrance steps. A switch is provided on the copilot's panel which allows the step to remain in the extended position. A light is located adjacent to the switch to alert the driver that the step is extended.*

## ***Toolbox***

*The toolbox is a six (6) drawer type mounted on a slide out tray in an exterior compartment. (Tools not included)*

## ***Water Faucet, Exterior***

*An exterior water faucet is located in the road side third luggage compartment.*

## ***Water Hook Up, Commercial***

*The water supply system is dual purpose and has a commercial water inlet connection that is located on the outside of*

# ***EXTERIOR***

*1997, 43 FT. WANDERLODGE*

*the coach on the roadside rear. Commercial water hook up can be used to supply all coach water system requirements in the campsite. Coach includes a quick disconnect for hooking up to commercial water.*

## **Water Hose**

*A 25 ft. water hose is placed loose in an outside compartment.*

## **Water Purifier**

*The bacteriostatic water purifier filters and purifies potable water to eliminate tastes, odor, and coloration produced by chlorine, rust bacteria, insecticides, detergents, sediments and other foreign objects. Satisfactory elimination of waterborne disease carrying bacteria is accomplished by a hygienic filter bed which consists of silver ions absorbed on sponge silver metal which is deposited in a finely divided form on granular activated carbon of high surface area. The water purifier is connected to cold water supply at the output of the city water fill and purifiers all water entering the coach. The water purifier is a self contained unit designed to purify 75,000 gallons before requiring replacements.*

## **Electric Door Locks For Storage Compartments**

*Electric storage compartment locks are standard on the 1997, 43 ft. unit. This includes the first three doors on each side of the coach between the axles.*

## **Outside Water Compartment**

*An outside water compartment is provided on the road side in the main water compartment. This will include a hot and cold mixer faucet, paper towel holder, soap dispenser, and water pump switch.*

## **Windshield Wipers**

*Dual 2-speed electric intermittent wipers with non glare arms and blades are provided. Wiper arms are 26" parallelograms with 24" blades. Wipers have a delay position with the delay control on the lower dash. A washer fluid reservoir fill is located in the road side front compartment.*

## **Keyless Entry**

*↵ A remote control on the key chain locks and unlocks the dead bolt on the entrance door as well as the luggage compartment doors.*

# ***EXTERIOR***

*1997, 43 FT. WANDERLODGE*

## ***Air Operated Lock for Entrance Door***

- ↵ *An air operated lock is installed at the top of entrance door for a tight seal. This lock engages automatically when the unit is put in drive and disengages when taken out of drive.*

## ***Electrical Access Panel***

- ↵ *The front electrical panel is accessed through a pantograph door located just below the windshield.*



# *Heating & Air Conditioning*

*1997, 43 FT. WANDERLODGE*

## *Air and Heat System, Automotive, HVAC*

*The dash heat and air system are an HVAC system designed to meet the latest freon requirements. This unit provides the ability to mix heat and air to provide better defrosting capability.*

## *Air Conditioner, Condensate Drain*

*Separate drain lines are provided for each air conditioning unit to route condensation from the roof to the ground through the body side walls.*

## *Ducted Roof Air Conditioner, W/Remote Thermostat*

*Air conditioners and a wall mounted master thermostat is located in the dinette area to control all three units. Remote temperature senders are located in the pilot area, kitchen/dinette area, and bedroom. AC/heat master switches are provided which allow the units to be started or stopped from the driver's area. The air conditioners are operable from 120 VAC source (generator or shoreline power).*

## *Freeze Protection*

*Heat tapes to be installed on all fresh water plumbing vulnerable*

*to freezing conditions. Additional insulation is installed in outside water compartment along with heat from the Aqua Hot hot water heat system via a 5000 BTU power convector on both sides of the holding tank compartment.*

## *Heat, Electric*

*Electric forced air heaters are located in galley and bath, controlled by remote thermostats.*

## *Heat, Hydronic (Aqua Hot)*

*The Diesel fired hydronic heating system consist of the following:*

- 1) Diesel fired broiler rated at 50,000 BTU with three zones (front, bath, & bedroom).*
- 2) Integral heat exchanger to provide hot water along with a heat exchanger that ties into the engine coolant to provide hot water, or engine preheat capability.*
- 3) Bay heat provides heat for the holding tank compartment with a low-temperature thermostat located in the bay area.*
- 4) The front zone is controlled by the heat side of the living room A/C thermostat and consist of a total of 30,000 BTU's of power convectors.*
- 5) The bath zone consist of 10,000 BTU's and is controlled by an individual thermostat located in that area.*

# *Heating & Air Conditioning*

*1997, 43 FT. WANDERLODGE*

*6) The bedroom zone contains 10,000 BTU's and is controlled on the heat side of the A/C thermostat.*

*7) The boiler also has a 1650 watt electrical heating element to provide heat during low demand period.*

# ***KITCHEN/DINETTE***

*1997, 43 FT. WANDERLODGE*

## **Cook Top, LPG**

*The two burner cook top is fueled by the coach LPG system. Unit includes a 12 VDC electronic ignition. A cook top cover is made of solid surfacing material has to lift off lids.*

## **Counter Top**

*The counter top is made of a solid color solid surfacing materia with brass accent trim.*

## **Cutlery Tray**

*A plastic tray is installed loose in an upper drawer in the kitchen base cabinet for storing kitchen utensils.*

## **Dinette, Table & Chairs**

*The dinette is a table made of solid surfacing material mounted on a cantilever leg, 12" extension leaf, 2 free standing chairs, and 2 folding chairs.*

## **Dishtowel Rods**

*A dish towel rack is installed inside the kitchen base cabinet area.*

## **Floor, 12" X 12" Tile**

*A standard selection 12" x 12" ceramic tile is installed in this area on a diagonal. Standard selections would be Laufen's Charleston series or Florida Tile's Natura Serene series.*

## **Food Center**

*The built in variable speed motor driven counter unit is designed for AC operation. Operable only when generator is on or when coach is connected to shoreline hook up. Food center includes blender and is mounted under a flush mount lid in the counter top.*

## **Galley Panel**

*The systems monitoring and control panel, is located in the kitchen base cabinet. This panel provides a convenient means of displaying potable water level, holding tanks, and LPG supply, as well as other functions listed below:*

- 1) Water pump switch w/indicator light - to indicate when power is being supplied to pump.*
- 2) Refrigerator alarm monitors the refrigerator temperature when the switch is on. An audible alarm sounds if unsafe temperature levels are encountered.*

# ***KITCHEN/DINETTE***

1997, 43 FT. WANDERLODGE

3) *Generator switch - controls the stop/start operation of the generator.*

## **Instant Hot Water Heater**

*A chrome 120 VAC hot water heater is located under the kitchen cabinet with a spout located adjacent to the sink. The instant hot water heater supply line is connected to the water purifier. A red lighted master switch is located under the kitchen counter to alert coach occupants the heater is "ON".*

## **Ice Maker**

*The 120 VAC ice maker, located in a kitchen base cabinet behind a door, is designed to provide a continuous automatic supply of ice cubes. The ice maker operates from shoreline, generator, or inverter.*

## **Lighting**

*A 12 VDC light bar is mounted at the kitchen and dinette overhead cabinets, a 12 VDC thin-lite is mounted under the kitchen and dinette overheads, and 12 volt spotter lights are mounted in selected locations under the overheads.*

## **Micro-Convection Oven**

*A 120 VAC micro-convection oven is mounted above the gas cook top and is powered by either shoreline, generator, or by the inverter. It includes a light under the microwave and a temperature probe and vent.*

## **Mirrors**

*Clear safety backed mirrors are provided on the wall behind and adjacent to the kitchen counter top.*

## **Pantry**

*A pantry either pull out, swing out, or individual drawers will be provided depending on floor plan.*

## **Refrigerator/Freezer**

*A Dometic side by side 7732 refrigerator/freezer is standard. The refrigerator operates on 120 volts from shoreline, inverter, generator, or LP gas.*

## **Shades Day/Night**

*Day/night pleated shades are installed on the windows inside trim. The shades are color coordinated to the interior color.*

# ***KITCHEN/DINETTE***

*1997, 43 FT. WANDERLODGE*

## **Sink**

*A Kohler Brookfield or Urbanite drop in enamel sink is standard. A single lever chrome faucet with spray attachment is included.*

## **Waste Basket**

*A plastic waste basket is included under the kitchen base cabinet.*



# **LIVING ROOM**

1997, 43 FT. WANDERLODGE

## **Companion Chairs**

*Standard chairs are Flexsteel. Chairs are covered in a fabric and mounted to a swivel base.*

## **Lights, Bullet**

*12 VDC lights are installed in the bottom of the overhead cabinets and are controlled by separate toggle switches, one on each side of living room.*

## **Lights, Fluorescent**

*12 VDC recessed fluorescent fixtures are installed in the bottom of the overhead cabinets. 120 VAC fluorescent fixtures are located above the overhead cabinets to provide indirect lighting.*

## **Sofa**

*An 84" Flexsteel sleeper sofa is standard w/built in serving trays in each arm. Sofa is covered in fabric. Include two throw pillows and two arm covers.*

## **Table or Tables**

*Living room table or tables are oak wood with a solid surface material on the counter top with .5" brass insert in the edge.*

## **Floor, Carpet**

*The living room floor is covered in a good grade of carpet.*

## **Window Boxing**

*Living room windows will have a boxing covered in wallpaper with wood trim. Day/night shades are installed at these windows.*

# ***MECHANICAL SYSTEMS***

1997, 43 FT. WANDERLODGE

## **Bulk Oil Fill, Direct Injection Into Block**

*The bulk oil fill feature includes a pressure operated system to allow the owner to select an amount of oil to be pumped into the engine. An oil storage tank (approx. 20 qt. capacity) is located on the right hand side of the engine compartment. A meter is provided to measure quantity and to track all oil added to date.*

## **Leveling Jacks, Hydraulic, Automatic**

*Include (4) hydraulic operated jacks. Controls for automatically leveling the unit in the campsite are located on the wall next to the driver.*

## **Tanks, Fresh Water, 120 gallons**

*The tanks are located in outside water compartment. The tank is non-pressurized type so that system water pressure is developed by a demand pump when not connected to commercial water. Tank is equipped with a two inch drain. Tanks also include level indicators.*

## **Fresh Water Manifold Distribution**

*A central manifold is located in the roadside luggage compartment. All hot and cold water is distributed to components by individual hot and cold lines from this central*

*point. Each hot and cold line has an individual shut off located on the manifold.*

## **Water Pumps, Dual**

*The central control switch for the water pumps is in the bathroom and has three settings. A factory calibrated pressure control switch is preset to turn the water pump on when the system pressure falls below 20 psi; and turns it off once pressure reaches 35 psi. Switches enabling the water pumps are located on the systems monitor panel, in the bathroom, and dash area.*

## **Wire & Plumb For Auxiliary Air Compressor**

*This feature includes wiring and plumbing for the auxiliary air compressor. The compressor itself is a regular production option.*

# ***PILOT/COPILOT AREA***

1997, 43 FT. WANDERLODGE

## **CB Receiver Transmitter**

*Forty channel, CB receiver/transmitter is installed in the hood table with all controls in the hand held portion. This unit includes left and right hand speakers with volume controls located in the driver's and copilot's area.*

## **Closed Circuit Television System**

*A black and white camera with a 1 lux or less sensitivity and a 7" black and white monitor which automatically operates when reverse gear is selected.*

## **Power Step Well Cover**

*An air powered step well cover retracts and extends from under the copilot's seat. In/out controls are located on the copilot's panel. An air override switch is located to the right side of the copilot seat to permit manual retraction in the event of low pressure.*

## **Light, Entrance**

*A 12 volt light is provided in the step well to facilitate entering or leaving the coach at dark. The light illuminates when the entrance step is in the extended position. A switch is provided*

*on the entrance door panel which permits the light to be turned off if the step is left in the extended position.*

## **Hood Table**

*The hood table is designed to provide maximum clearance at the entrance. A drawer is provided with (2) two cup holders. A built in footrest is installed in the hood table in front of the copilot seat.*

## **Musical Horns**

*A solid state stereo programmed electronic horn which can play a number of tunes available from the integral computer storage library. This unit is located in the lower dash. Dual speakers are located on the roof.*

## **Lock, Electric, Entrance Door**

*The entrance door includes an electric dead bolt lock with switches on the upper dash panel, Lock can also be manually operated from the key chain wireless transmitter.*

## **Radar Detector**

*The unit provides a flashing red warning light and beeping*

# ***PILOT/COPILOT AREA***

1997, 43 FT. WANDERLODGE

*signal indicating radar detection. A radar master switch is located on the lower dash to turn the unit on or off.*

## **Seat, Pilot, Air Ride**

↪ *A Villa drivers seat is mounted on a six way adjustable power base with electrically operated lumbar support. The drivers seat is also mounted on an Isri air ride base. This seat is covered in leather.*

## **Seat, Copilot**

↪ *A Villa copilot seat is mounted on a six way adjustable power base with electrically operated lumbar support.*

## **Shades**

*Day/night tension shades are mounted on the driver, copilot windows. Shades are installed on the inside of the window trim and are color coordinated to the interior.*

## **Light, Bullet**

*12 volt bullet lights are provided for the pilot and copilot areas.*

## **Steering Wheel W/Tilt & Telescoping Column**

*Steering wheel is 20" diameter wheel upholstered in leather. Includes two flat black rally type spokes tapering below the center of the steering wheel. The steering wheel tilt control allows multiple positioning of the steering wheel in increments of 7 degrees. Includes telescoping steering column which can be locked at infinite locations within its telescoping range of 2.25 inches.*

## **Stereo System, Premium Sound**

*Tuner cassette features direct access tuning, 24 channel preset memory, seek and manual tuning, Dolby B noise reduction, metal tape capability, and loudness switch. Includes four full range coaxial speakers in the front living area. Also includes a 10 Disc CD changer as well as four channel 40 watt per channel amplifier and a digital signal processor, 9 band graphic equalizer and five equalizer presets.*

## **Television, Front Overhead**

*A built in 20" stereo color TV. TV has remote control stereo MTS broadcast reception, audio video inputs, and is cable compatible. Due to Federal regulations this TV will not operate while in transit.*

# ***PILOT/COPILOT AREA***

*1997, 43 FT. WANDERLODGE*

## **VCR, Stereo**

↵ *To be mounted in front overhead cabinet. Video selector switch is installed in front overhead cabinet which permits independent switching of two VCRs, TV, TV cable, and TV game to the two television sets in coach. Audio from VCR is routed to stereo television.*

## **Trip Odometer**

*Indicates miles driven since last reset. Includes a reset bar.*

## **Windshield Blind and Drape**

*A blind extends across the front windshield. Hooks are provided in the bottom of overhead to secure the blind while in transit. For total privacy drapes are mounted on the post to outside of windshield and pull across to Velcro together in the center of windshield. Drapes are made of a fabric to color coordinate with interior and are lined with a black out lining.*

## **Visor, Sun**

↵ *Plexiglas visors are provided. These visors are tinted.*

## **Sentrek Electronic Compass and Thermometer**

*An electronic compass and thermometer is installed in the panel over the left hand side of the driver.*

## **Dual Mirror Controls**

*Located in a panel in the dash area are two remote mirror controls. The controls to the left control the upper flat rear view mirror. The control to the right control the lower convex (wide angle) rear view mirror. Each control provides full adjustment as indicated by the arrows on the switches.*

## **Heated Defrost**

↵ *The driver and copilot front stationary windows have an electric heating grid applied which will minimize frost and fogging conditions. When the mirror/window heat switch is depressed, these electric elements on the windows, as well as the upper outside rearview mirrors, will heat for approximately ten minutes.*



# **WASTE SYSTEM**

1997, 43 FT. WANDERLODGE

## **Power Dump Valve System For Holding Tanks**

*Air operated cylinders with a control panel are located in the roadside holding tank compartment. The panel includes a toggle switch for dumping each tank and an air pressure gauge for the system. A manual operating tool is attached to the control panel in the event of low air pressure.*

## **Tanks, Holding**

*Separate holding tanks for gray water and waste water are provided. Each holding tank has a separate drain valve, dumping gray water and waste through a common single discharge connection. The waste water tank has a flushing system that can reduce bacterial growth and unpleasant odors in the tank if operated properly. An individual vent system connects each holding tank to vent stacks located on the coach roof.*

## **Approximate Capacities**

*Gray - 95 gallons*

*Waste - 95 gallons*

## **No Fuss Flush**

*A tank cleaning mechanism that, when a garden hose is attached to the hose connection port, will direct jets of water*

*throughout the tank thus performing the cleaning action. This is utilized on the black tank only.*

---

**1997, 43' WANDERLODGE OPTIONAL FEATURES**

---

19-Oct-96

---

AREA	OPTION NO.	DESCRIPTION
<b>BATHROOM</b>	<b>5947</b>	<b>SHOWER IN LIEU OF TUB IN WALK THRU BATH.....</b> A shower installed in lieu of standard tub in walk-thru bath floorplan.
<b>BATHROOM</b>	<b>5959</b>	<b>WASHER/DRYER COMBO, 120V.....</b> Combo washer/dryer is installed in closet area of bath with short hanging above. Shut off valves for hot & cold water are located below combo unit. 120vac power is supplied by shoreline hookup or generator.
<b>BATHROOM</b>	<b>6068</b>	<b>WIRE &amp; PLUMB ONLY FOR WASHER/DRYER.....</b> This includes receptacle and plumbing for washer/dryer. Does not include the combo washer/dryer.
<b>BEDROOM</b>	<b>5859</b>	<b>BEDROOM, TWIN BED.....</b> Twin beds replace standard cross island or center island bed, depending on floorplan. Full hanging at head of beds with mirrored doors. Overhead cabinets are installed over each bed.
<b>BEDROOM</b>	<b>6074</b>	<b>CLOSET, REAR, REVOLVING, POWER OPERATED.....</b> An electric operated revolving closet is offered in the rear in lieu of the standard closet arrangement.
<b>BEDROOM</b>	<b>6076</b>	<b>OMIT RIGHT HAND BEDROOM WINDOW ACCESS.....</b> Right hand bedroom window to be covered over from inside thus allowing bed to move closer to wall. This allows for either additional footspace at foot of bed or a longer bed.

AREA	OPTION NO.	DESCRIPTION
<i>ELECTRICAL</i>	<i>5826</i>	<i>FREEZER IN OUTSIDE COMP. 50 LB.....</i> A 50 lb. capacity freezer is mounted on a pull out tray in an outside compartment. The freezer operates on 120 VAC or 12 VDC.
<i>ELECTRICAL</i>	<i>6057</i>	<i>ENTERTAINMENT CENTER IN OUTSIDE COMP.....</i> An entertainment center to be installed in outside compartment. Items included will be a 13" TV on swivel tray. AM/FM stereo, and two remote speakers. Cabinet will be covered in wood or laminate to match interior.
<i>ELECTRICAL</i>	<i>6058</i>	<i>SOLAR PANELS (4).....</i> Four solar panels installed on the roof.
<i>ENTRANCE</i>	<i>6056</i>	<i>BRASS GRAB HANDLES (3).....</i> Brass grab handles are installed at entrance in lieu of standard chrome.
<i>EXTERIOR</i>	<i>5812</i>	<i>AIR COMPRESSOR, AUXILIARY, 120 VAC.....</i> This option includes a 120 VAC compressor located in an outside compartment. A 12V switch located on the lower dash panel operates the compressor via shoreline or generator power. The compressor provides a quick source of air for power tools or pressurizing the coach air system or tires without starting coach engine.
<i>EXTERIOR</i>	<i>5917</i>	<i>LUGGAGE RACK AND ACCESS LADDER.....</i> This option includes an aluminum roof luggage rack, with aerodynamic style ABS over front and rear, access ladder and fluted aluminum roof tread.

AREA	OPTION NO.	DESCRIPTION
EXTERIOR	5980	<b>MIRRORS, REARVIEW, BRIGHT POLISHED.....</b> Includes the right and left outside mirrors bright polished.
EXTERIOR	6046	<b>PAINT DESIGN, WINGS.....</b> See paint design section of book for color example.
EXTERIOR	6047	<b>PAINT DESIGN, RHAPSODY.....</b> See paint design section of book for color example.
EXTERIOR	6048	<b>PAINT DESIGN, OFF TO THE RACES.....</b> See paint design section of book for color example.
EXTERIOR	6049	<b>PAINT DESIGN, ODYSSEY.....</b> See paint design section of book for color example.
EXTERIOR	6050	<b>PAINT DESIGN, LASTING IMPRESSION.....</b> See paint design section of book for color example.
EXTERIOR	6051	<b>PAINT DESIGN, CUSTOMER DESIGNED.....</b> See paint design section of book for color example.
EXTERIOR	6053	<b>JOEY BED (FULL WIDTH PASS-THRU).....</b> Installed in pass thru compartment and pulls out from either side.
EXTERIOR	6054	<b>JOEY BED (2-ONE EACH SIDE).....</b> 2 individual Joey beds. One on each side.

AREA	OPTION NO.	DESCRIPTION
<i>EXTERIOR</i>	<i>6063</i>	<i>JOEY BED (ONE SIDE ONLY).....</i> An individual unit on one side of the pass thru compartment.
<i>EXTERIOR</i>	<i>6069</i>	<i>WIRE &amp; PLUMB ONLY FOR WASHER/DRYER.....</i> Wiring and plumbing only for combo washer/dryer in outside compartment.
<i>GEN. INTERIOR</i>	<i>5851</i>	<i>SKYLIGHT W/SLDG COVERS AND SCREENS.....</i> The skylight includes integral sliding cover and screens.
<i>GEN. INTERIOR</i>	<i>6072</i>	<i>INTERIOR PACKAGE,PICK.OAK.....</i> Interior cabinetry and trim will be pickled oak in lieu of standard oak.
<i>GEN.INTERIOR</i>	<i>5828</i>	<i>INTERIOR PROTECTION PACKAGE.....</i> This option includes: Carpet with bound edges installed loose on the dash, bathroom carpet without bound edges packed loose in outside bay, and removable vinyl carpet cover for living room. All items match coach interior decor.
<i>GEN.INTERIOR</i>	<i>5852</i>	<i>LEATHER PACKAGE.....</i> This option includes, dinette cushions and companion chairs covered in a leather to match the interior decor.
<i>GEN.INTERIOR</i>	<i>5912</i>	<i>INTERIOR PACKAGE, LAMINATE (FORMICA)</i> This option includes selections from the standard Formica selection. Any special designer or European collections will be priced on an individual basis.

AREA	OPTION NO.	DESCRIPTION
<i>GEN.INTERIOR</i>	<i>5961</i>	<i>CUSTOMER SUPPLIED MATERIAL.....</i> This option is required when a customer supplies materials for use in a unit. We are not responsible for warranty or working condition of these items.
<i>GEN.INTERIOR</i>	<i>5977</i>	<i>INTERIOR PACKAGE, MAHOGANY.....</i> Mahogany cabinetry and trim are used in lieu of standard oak.
<i>GEN.INTERIOR</i>	<i>5990</i>	<i>CHROME OPTION.....</i> This option installs chrome faucets, lights, etc. in lieu of standard gold colored or brass.
<i>GEN.INTERIOR</i>	<i>6044</i>	<i>SOAP DISPENSER IN KIT. OR BATH.....</i> A pump type soap dispenser is installed at the kitchen or bath sink to match interior.
<i>GEN.INTERIOR</i>	<i>6045</i>	<i>INTERIOR PACKAGE, CHERRY.....</i> Cherry cabinetry and trim in lieu of standard oak.
<i>GEN.INTERIOR</i>	<i>6065</i>	<i>INTERIOR PACKAGE, LAMINATE SPECIAL.....</i> This option is for special laminates and will be quoted on an individual basis.
<i>GEN.INTERIOR</i>	<i>6070</i>	<i>INSERT STRIPS IN CEILING.....</i> This option includes 1.5" brass insert strips in livingroom, kitchen, and bedroom ceiling. Inserts in other materials will be quoted on an individual basis.

AREA	OPTION NO.	DESCRIPTION
<i>GEN.INTERIOR</i>	<i>6071</i>	<i>INTERIOR PACKAGE, WALNUT.....</i> Natural walnut cabinetry and trim will be used in lieu of standard oak.
<i>GEN.INTERIOR</i>	<i>6079</i>	<i>FRONT TV WIRED THROUGH STEREO SPEAKERS-----</i> Front dash TV will be wired for sound through the stereo speakers in the living room/kit./dINETTE.
<i>GEN.INTERIOR</i>	<i>6080</i>	<i>REMOTE LINK FOR VCR-----</i> A remote link off the front VCR will be installed in the bedroom area.
<i>GEN.INTERIOR</i>	<i>6081</i>	<i>SKYLIGHT, BUBBLE, 20" X 20"-----</i> This option installs a 20" x 20" skylight bubble with day/night shade for privacy. Location will need to be determined by the individual floor plan and body structure.
<i>GEN.INTERIOR</i>	<i>6082</i>	<i>SKYLIGHT, BUBBLE, 14" X 14"-----</i> This option installs a 14" x 14" skylight bubble with day/night shade for privacy. Location depends on individual floor plan and body structure.
<i>KIT/DINETTE</i>	<i>5773</i>	<i>GARBAGE DISPOSAL.....</i> This option includes garbage disposal located under kitchen sink bowl. Requires 120V supplied from shoreline or generator and is controlled by a switch located in the kitchen base cabinet.
<i>KIT/DINETTE</i>	<i>5916</i>	<i>DINETTE PACKAGE, L SHAPE.....</i> Three place dinette with a motorized retractable table for increased kitchen work space. Option includes Vista lights inside the ceiling fixture. Vista lights are wired to a separate switch.



AREA	OPTION NO.	DESCRIPTION
<i>KIT/DINETTE</i>	<i>6043</i>	<i>KITCHENAIDE SIDE BY SIDE REFRIGERATOR.....</i> Where floorplan allows, an Kitchenaide side by side refrigerator replaces the standard Dometic refrigerator.
<i>KIT/DINETTE</i>	<i>6083</i>	<i>BOOTH DINETTE IN LIEU OF TABLE &amp; CHAIRS-----</i> A face to face booth dinette covered in fabric will be installed in lieu of table and chairs when floor plan permits.
<i>KIT/DINETTE</i>	<i>6084</i>	<i>ACRYLIC DIVIDER WALL-KITCHEN-----</i> A clear acrylic divider is installed at the front of the kitchen counter top. Note: This does not include any special etching designs.
<i>KITCHEN</i>	<i>6040</i>	<i>GROHE EUROPEAN FAUCET IN KITCHEN.....</i> A Grohe European faucet is installed in the kitchen in lieu of standard single lever chrome.
<i>KITCHEN</i>	<i>6041</i>	<i>COLOR MATCHED CONSTANT HOT.....</i> A color matched Constant hot is installed in lieu of standard chrome.
<i>LIVINGROOM</i>	<i>5913</i>	<i>DELETE LIVINGROOM OVERHEAD CABINETS.....</i> Living room overhead cabinets are deleted and replaced with valances with indirect lighting. Valances are covered in fabric to match interior.
<i>PLT/COPLT</i>	<i>5951</i>	<i>SEAT,COPILOT,31" BUDDY W/POWER FOOTREST.....</i> This optional seat is a wider Villa seat with power footrest and lumbar support. It has the same six way electric seat adjustment as the standard co-pilot seat and is color coordinated to match pilot seat. Driver's seat will also be Villa w/lumbar support.

AREA	OPTION NO.	DESCRIPTION
<i>PLT/COPLT</i>	<i>5960</i>	<i>MUSICAL HORN CONTROLS, REMOTE.....</i> This is a second control panel for the standard musical horn. It is installed next to the copilot's seat.
<i>PLT/COPLT</i>	<i>6033</i>	<i>ALTIMETER IN PANEL OVER COPILOT.....</i> An altimeter is installed in the right hand overhead control panel above copilot.
<i>PLT/COPLT</i>	<i>6078</i>	<i>ENGINE PRO DRIVER.....</i> A monitor for the Detroit diesel Series 60 engine is installed in the dash area.
<i>STATE DECAL</i>	<i>5870</i>	<i>STATE CERTIFICATION, CALIFORNIA.....</i>
<i>STATE DECAL</i>	<i>5888</i>	<i>STATE SUPPLIED OPERATING DECAL, TENNESSEE.....</i>
<i>STATE DECAL</i>	<i>5893</i>	<i>STATE SUPPLIED OPERATING DECAL, FLORIDA.....</i>
<i>STATE DECAL</i>	<i>5897</i>	<i>STATE SUPPLIED OPERATING DECAL, WASHINGTON.....</i>

---

## 1997, 43' WANDERLODGE

19-Oct-96

---

**Floorplans: (43-1) (43-2) (43-4) (43-6) (4-7) (43-8) (43-9) (43-10) -----Base price RETAIL: \$587,050.00**

**Floorplans: (43-3) (43-5) (43-11)-----Base price RETAIL: \$594,010.00**

---

BATHROOM	<input type="checkbox"/>	5947	SHOWER IN LIEU OF TUB IN WALK THRU BATH.....	\$0.00
BATHROOM	<input type="checkbox"/>	5959	WASHER/DRYER COMBO, 120V.....	\$2,600.00
BEDROOM	<input type="checkbox"/>	5859	BEDROOM, TWIN BED.....	\$910.00
ELECTRICAL	<input type="checkbox"/>	5826	FREEZER IN OUTSIDE COMP. 50 LB.....	\$1,065.00
EXTERIOR	<input type="checkbox"/>	5812	AIR COMPRESSOR, AUXILIARY, 120 VAC.....	\$1,200.00
EXTERIOR	<input type="checkbox"/>	5917	LUGGAGE RACK AND ACCESS LADDER.....	\$0.00
EXTERIOR	<input type="checkbox"/>	5980	MIRRORS,REARVIEW,BRIGHT POLISHED.....	\$225.00
GEN.INTERIOR	<input type="checkbox"/>	5961	CUSTOMER SUPPLIED MATERIAL.....	\$0.00
GEN.INTERIOR	<input type="checkbox"/>	5912	INTERIOR PACKAGE, LAMINATE (FORMICA)	\$0.00
GEN.INTERIOR	<input type="checkbox"/>	5977	INTERIOR PACKAGE, MAHOGANY.....	\$2,850.00
GEN.INTERIOR	<input type="checkbox"/>	6071	INTERIOR PACKAGE,WALNUT.....	\$2,850.00
GEN.INTERIOR	<input type="checkbox"/>	6045	INTERIOR PACKAGE,CHERRY.....	\$2,850.00
GEN.INTERIOR	<input type="checkbox"/>	5828	INTERIOR PROTECTION PACKAGE.....	\$600.00
GEN.INTERIOR	<input type="checkbox"/>	5852	LEATHER PACKAGE.....	\$2,070.00
GEN. INTERIOR	<input type="checkbox"/>	5851	SKYLIGHT W/SLDG COVERS AND SCREENS.....	\$800.00
KIT/DINETTE	<input type="checkbox"/>	5916	DINETTE PACKAGE, L SHAPE.....	\$1,930.00
KIT/DINETTE	<input type="checkbox"/>	5773	GARBAGE DISPOSAL.....	\$265.00
LIVINGROOM	<input type="checkbox"/>	5913	DELETE LIVINGROOM OVERHEAD CABINETS.....	\$0.00
PLT/COPLT	<input type="checkbox"/>	6033	ALTIMETER IN PANEL OVER COPILOT.....	\$385.00
PLT/COPLT	<input type="checkbox"/>	5960	MUSICAL HORN CONTROLS, REMOTE.....	\$265.00
PLT/COPLT	<input type="checkbox"/>	5951	SEAT,COPILOT,31" BUDDY W/POWER FOOTREST.....	\$1,000.00
STATE DECAL	<input type="checkbox"/>	5870	STATE CERTIFICATION, CALIFORNIA.....	\$345.00

**Floorplans: (43-1) (43-2) (43-4) (43-6) (4-7) (43-8) (43-9) (43-10) -----Base price RETAIL: \$587,050.00**

**Floorplans: (43-3) (43-5) (43-11)-----Base price RETAIL: \$594,010.00**

STATE DECAL	<input type="checkbox"/>	5893	STATE SUPPLIED OPERATING DECAL, FLORIDA.....	\$0.00
STATE DECAL	<input type="checkbox"/>	5888	STATE SUPPLIED OPERATING DECAL, TENNESSEE.....	\$0.00
BEDROOM	<input type="checkbox"/>	6076	OMIT RIGHT HAND BEDROOM WINDOW ACCESS.....	\$295.00
ELECTRICAL	<input type="checkbox"/>	6057	ENTERTAINMENT CENTER IN OUTSIDE COMP.....	\$2,920.00
KIT/DINETTE	<input type="checkbox"/>	6043	KITCHENAIDE SIDE BY SIDE REFRIGERATOR.....	\$0.00
EXTERIOR	<input type="checkbox"/>	6063	JOEY BED (ONE SIDE ONLY).....	\$1,035.00
EXTERIOR	<input type="checkbox"/>	6054	JOEY BED (2-ONE EACH SIDE).....	\$2,070.00
ELECTRICAL	<input type="checkbox"/>	6058	SOLAR PANELS (4).....	\$3,530.00
ENTRANCE	<input type="checkbox"/>	6056	BRASS GRAB HANDLES (3).....	\$670.00
KITCHEN	<input type="checkbox"/>	6040	GROHE EUROPEAN FAUCET IN KITCHEN.....	\$240.00
KITCHEN	<input type="checkbox"/>	6041	COLOR MATCHED CONSTANT HOT.....	\$240.00
GEN.INTERIOR	<input type="checkbox"/>	6044	SOAP DISPENSER IN KIT. OR BATH.....	\$120.00
EXTERIOR	<input type="checkbox"/>	6050	PAINT DESIGN, LASTING IMPRESSION.....	\$1,430.00
EXTERIOR	<input type="checkbox"/>	6048	PAINT DESIGN, OFF TO THE RACES.....	\$1,100.00
EXTERIOR	<input type="checkbox"/>	6047	PAINT DESIGN, RHAPSODY.....	\$1,100.00
EXTERIOR	<input type="checkbox"/>	6046	PAINT DESIGN, WINGS.....	\$1,230.00
EXTERIOR	<input type="checkbox"/>	6049	PAINT DESIGN, ODYSSEY.....	\$1,100.00
EXTERIOR	<input type="checkbox"/>	6051	PAINT DESIGN, CUSTOMER DESIGNED.....	
EXTERIOR	<input type="checkbox"/>	6053	JOEY BED (FULL WIDTH PASS-THRU).....	\$2,340.00
GEN.INTERIOR	<input type="checkbox"/>	6070	INSERT STRIPS IN CEILING.....	\$320.00
GEN.INTERIOR	<input type="checkbox"/>	6065	INTERIOR PACKAGE,LAMINATE SPECIAL.....	
BEDROOM	<input type="checkbox"/>	6074	CLOSET, REAR, REVOLVING, POWER OPERATED.....	\$2,280.00
EXTERIOR	<input type="checkbox"/>	6069	WIRE & PLUMB ONLY FOR WASHER/DRYER.....	\$485.00
BATHROOM	<input type="checkbox"/>	6068	WIRE & PLUMB ONLY FOR WASHER/DRYER.....	\$225.00

---

Floorplans: (43-1) (43-2) (43-4) (43-6) (4-7) (43-8) (43-9) (43-10) -----Base price RETAIL: \$587,050.00

Floorplans: (43-3) (43-5) (43-11)-----Base price RETAIL: \$594,010.00

---

GEN.INTERIOR	<input type="checkbox"/>	5990	CHROME OPTION.....	\$0.00
GEN. INTERIOR	<input type="checkbox"/>	6072	INTERIOR PACKAGE,PICK.OAK.....	\$0.00
STATE DECAL	<input type="checkbox"/>	5897	STATE SUPPLIED OPERATING DECAL, WASHINGTON.....	\$345.00
KIT/DINETTE	<input type="checkbox"/>	6083	BOOTH DINETTE IN LIEU OF TABLE & CHAIRS-----	\$420.00
PLT/COPLT	<input type="checkbox"/>	6078	ENGINE PRO DRIVER-----	\$1,105.00
GEN.INTERIOR	<input type="checkbox"/>	6079	FRONT TV WIRED THROUGH STEREO SPEAKERS-----	\$336.00
GEN.INTERIOR	<input type="checkbox"/>	6080	REMOTE LINK FOR VCR-----	\$420.00
GEN.INTERIOR	<input type="checkbox"/>	6081	SKYLIGHT, BUBBLE, 20" X 20"-----	\$485.00
GEN.INTERIOR	<input type="checkbox"/>	6082	SKYLIGHT, BUBBLE, 14" X 14"-----	\$420.00
KIT/DINETTE	<input type="checkbox"/>	6084	ACRYLIC DIVIDER WALL-KITCHEN-----	\$225.00

**\* PRICES AND/OR SPECIFICATIONS ARE SUBJECT TO CHANGE WITHOUT NOTICE.**