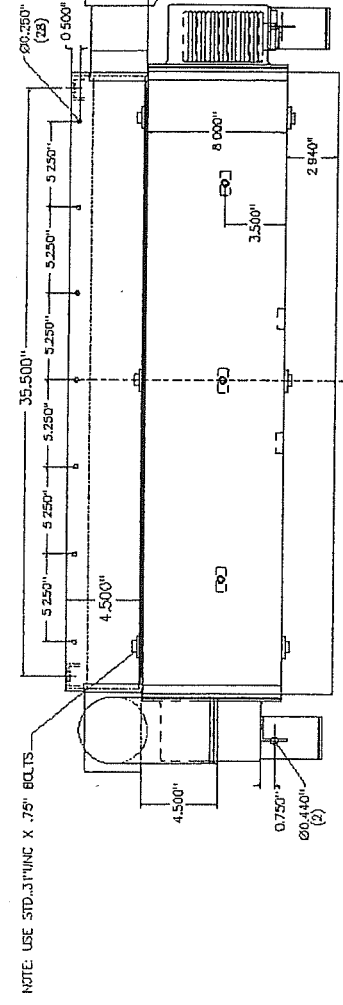
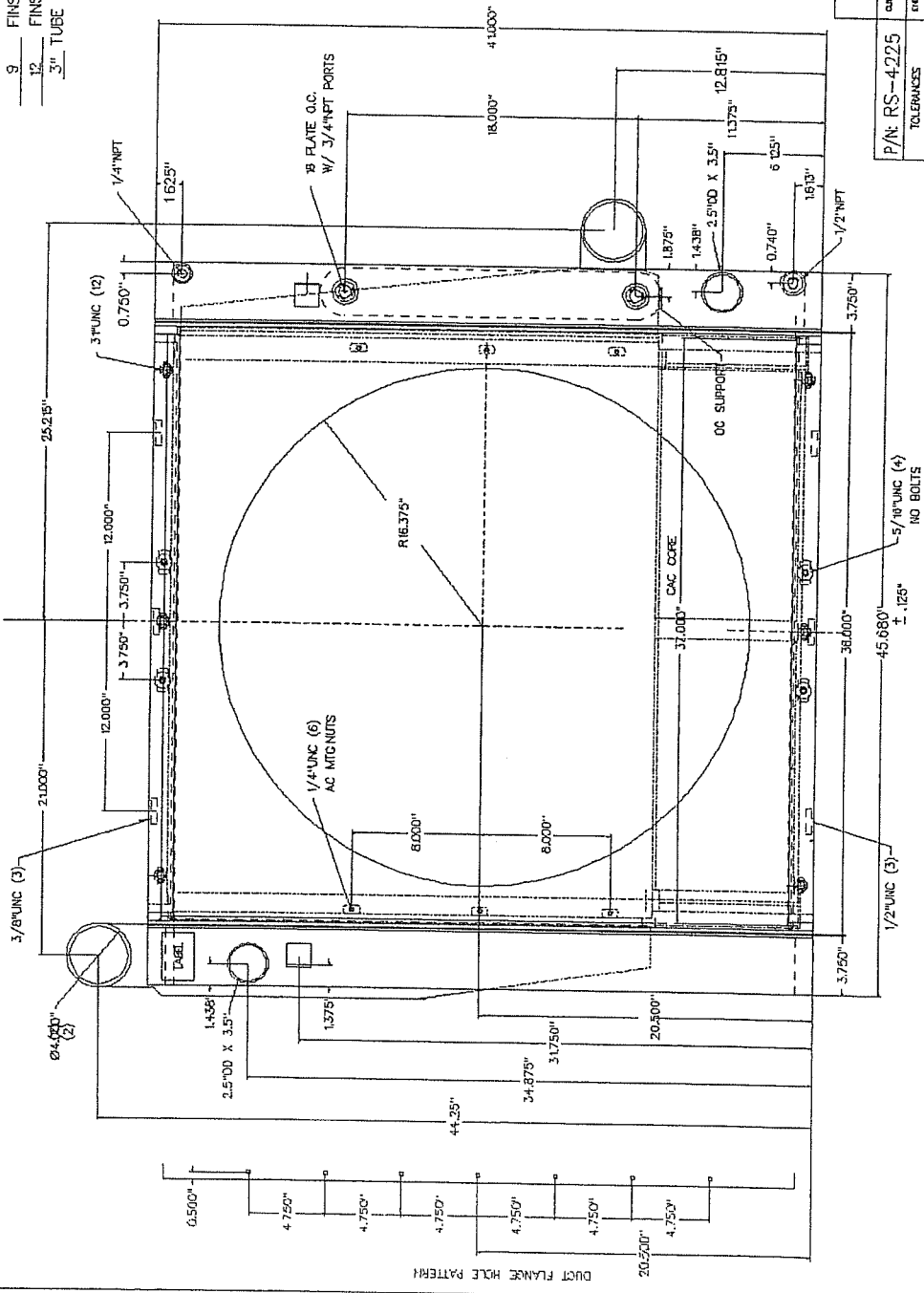


NOTE: PAINT RAD. BLACK
 CAP ALL OPENINGS
 TEST RAD. @ 15 PSIG
 TEST CAC @ 40 PSIG



NOTE: CAC CORE
 9 FINS/INCH- EXT. .375" L
 12 FINS/INCH- INT. .277" OS
 3" TUBE



DATE	DESCRIPTION	REV
	REVISIONS	

LABRATOR SPECIALTIES INC.
 PART: BLUEBIRD
 DRAWING: 0817PA
 REVISE: SERIES 80
 SIZE: 300 I/P
 SCALE: NONE
 DATE: 11-09
 APPR: D.BRIETH

P/N: RS-4225
 TOLERANCES: .060
 ALL DIM: .1"
 ALL ANGLES: 1"

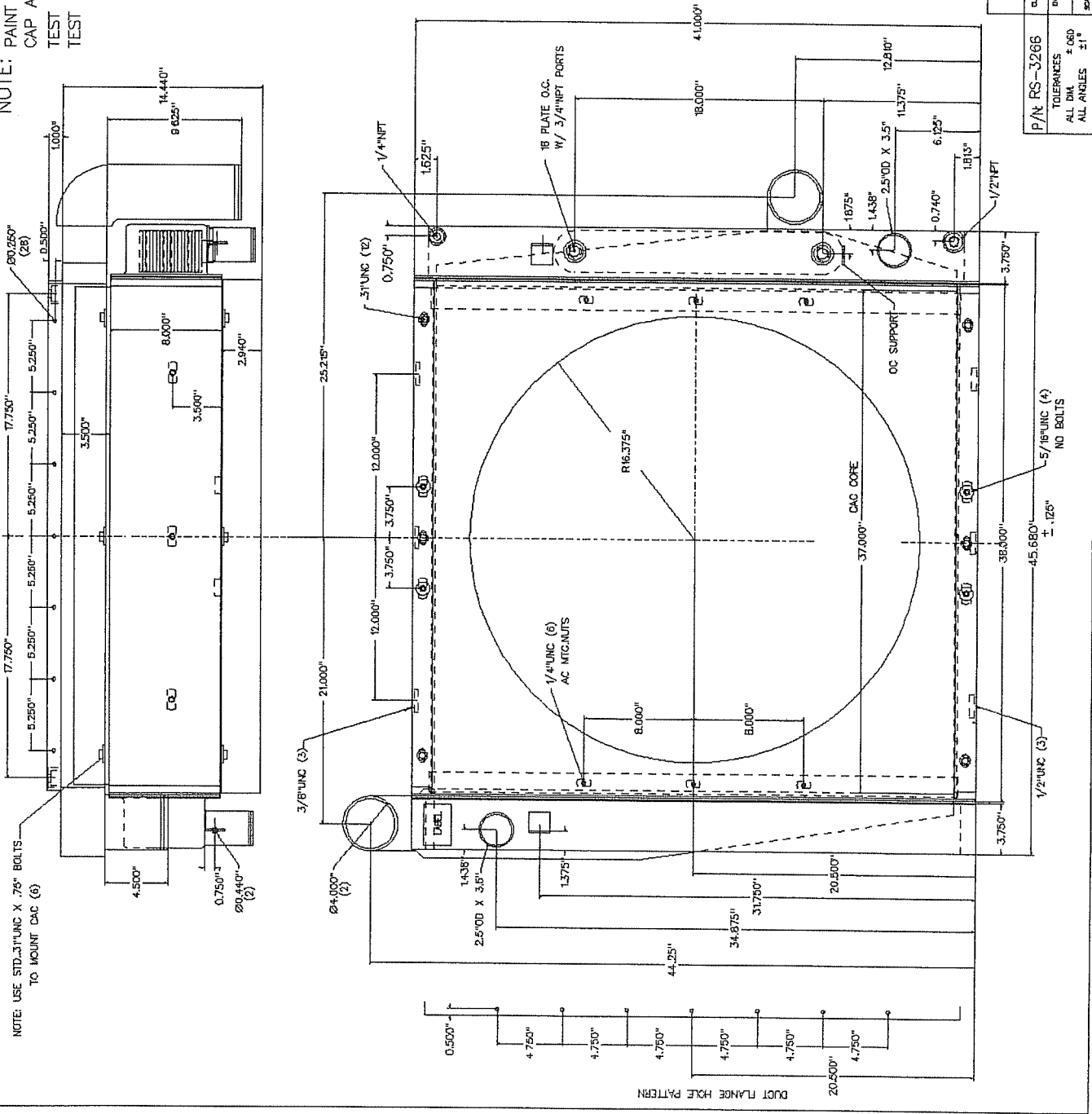


DUCT FLANGE HOLE PATTERN



NOTE: PAINT RAD. BLACK
CAP ALL OPENINGS
TEST RAD. @ 15 PSIG
TEST CAC @ 40 PSIG

NOTE: USE STD. 3/8" X 7/8" BOLTS
TO MOUNT DAC



DATE	DESCRIPTION	REV
12-27	ADD 2x 1/4" NPT TO DT.	A
1-27	1/4" NPT FOR USE ON CHARGE	

HERNIMATOR SPECIALTIES INC.			
P/N RS-3266	QTY: BLUEBIRD	QTY: 1029043	
TOLERANCES	ALL DIM ±.050	SIZE CT-116	
ALL DIM	±.050		
ALL ANGLES	±1°		
SCALE: NONE	DWG: 5-96	DRW: DJR/ETH	

DUCT FLANGE HOLE PATTERN