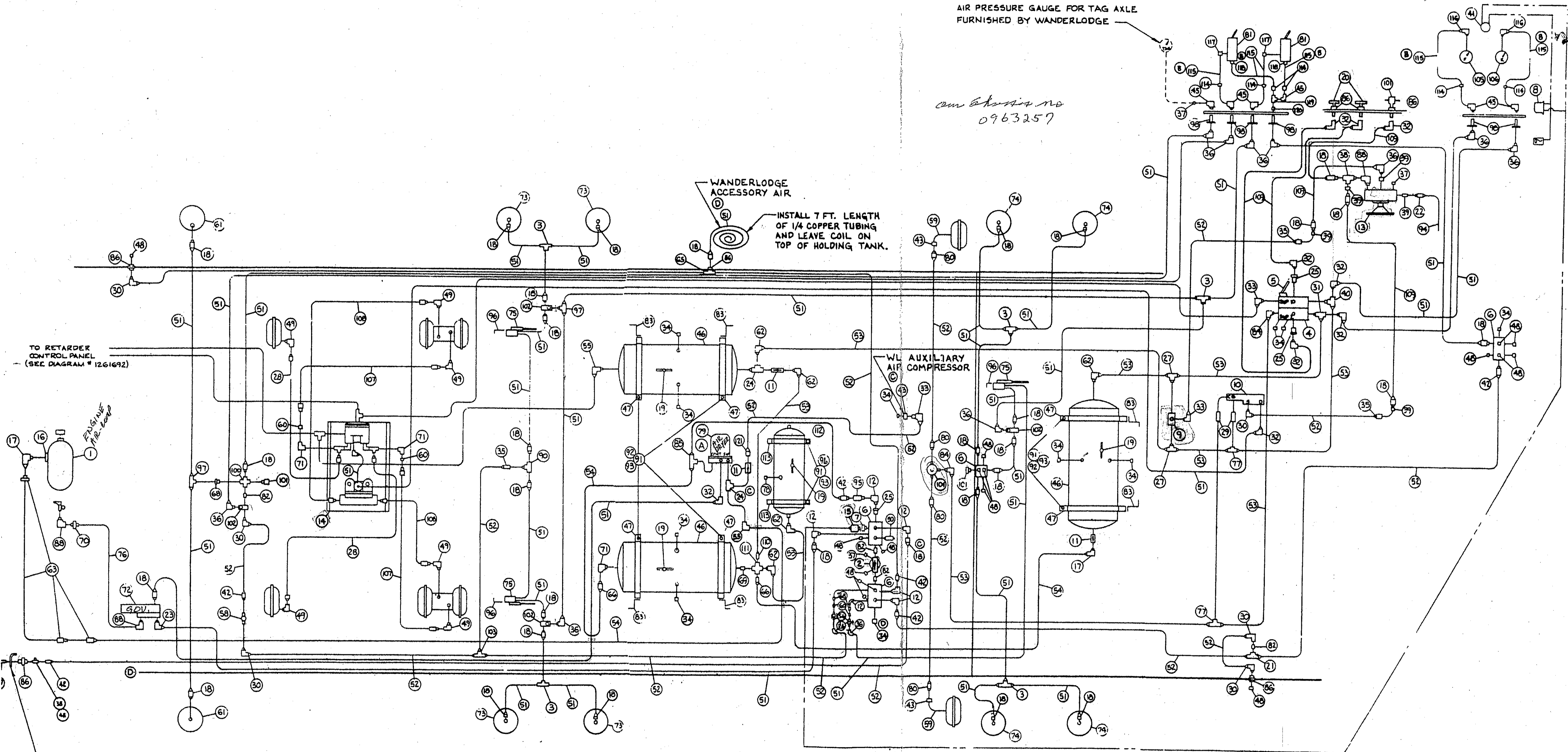


# DUAL AIR BRAKES 38' & 40'

AIR PRESSURE GAUGE FOR TAG AXLE  
FURNISHED BY WANDERLIDGE

*an extra no*  
0963257



INSTALL 7 FT. LENGTH  
OF 1/4 COPPER TUBING  
AND LEAVE COIL ON  
TOP OF HOLDING TANK.

TO RETARDER  
CONTROL PANEL  
(SEE DIAGRAM # 1261692)

WL AUXILIARY  
AIR COMPRESSOR

ENGINE  
AIR LINE

KEY NO.	REQD	FOUND	DESCRIPTION
8	1	1	VALVE, PRESSURE PROTECTION, 65 PSI
9	1	1	" , DOUBLE CHECK 3/8" PIPE
11	3	3	" , SINGLE CHECK, 1/2" "
50	1	1	" , SAFETY, 1/4 MALE PIPE
54	2	2	" , CHECK, 1/8 PIPE
58	1	1	" , PRESSURE REDUCING, RV-1, 50 PSI
67	1	1	" , SCHRADER, 1/4" MAT
75	3	3	" , HEIGHT CONTROL
102	4	4	" , RELAY PILOT CONTROL
104	1	1	" , QUICK RELEASE
81	2	2	" , AIR
13	1	1	" , PP-1, 30 PSI
14	1	1	VALVE ASSY, SPRING SEIZE BRAKE RELAY
20	2	2	SWITCH, STOP LIGHT, WILLIAMS, 77A
101	3	3	INDICATOR, LOW PRESSURE
10	1	1	VALVE, SPRING BRAKE SE-1
4	1	1	" , DUAL BRAKE, FL6
5	1	1	TREADLE ASSY, W/ RUBBER COVER
15	1	1	INDICATOR, LOW PRESSURE, 66 PSI

CHECK VALUES #2 11

NOTE:  
FOR DIAGRAM, DUAL AIR BRAKE ASSY, 3706 AND 3903, PART LIST, WLPP, SEE DRAWING NO. 1299981

1168863 - BRACKET SCHRADER VALVE  
TO BE INSTALLED AFTER BODY MOUNTING.