



MANUFACTURING CORPORATION

P. O. BOX 97, BENTON HARBOR, MICHIGAN 49022
PHONE (616) 926-6171

OPERATING INSTRUCTIONS FOR 0533 - 1033 - 1533 OIL-LESS PUMP

CAUTION

NEVER LUBRICATE THIS DRY "OIL-LESS" AIR PUMP. The carbon vanes and grease packed bearings require no oil.

DANGER: To avoid explosive hazard, DO NOT pump combustible liquids or vapors with these units.

CLEANING

Should excessive dirt, foreign particles, moisture, or possibly even oil (from vapors in surrounding air) be permitted to enter the pump chamber, the vanes will act "sluggish" or even break. FLUSHING of the pump should take care of these situations. If not, remove the end plate for further examination.

FLUSHING is done by removing filter assemblies and adding several teaspoonsful of solvent at pump intake WHILE THE PUMP IS RUNNING. DON'T USE KEROSENE. Repeat the flushing procedure again. After all the solvent has passed thru the pump, replace the filters. Periodic flushing is recommended.

Recommended commercial solvents are "Loctite Safety Solvent", "Inhibisol Safety Solvent", "Dow Chemical Chlorothane", or equivalent solvents.

FILTERS

Dirty filters will restrict air flow. If not corrected, this could lead to early pump failure and possible motor overloading. Check filter felts periodically and clean as necessary by removing them from the element and wash in a flushing solvent. Use compressed air to dry and replace them as they were.

VANE REPLACEMENT

The four (4) vanes are replaced simply by removing three screws, the retainer plate, and the carbon end plate, and exchanging new for worn or broken vanes. Use compressed air to clean out the pump chamber, especially if the vanes have broken. Do this prior to inserting new vanes.

END PLATE REPLACEMENT (OR EXCHANGE)

The rotors are held in place by Loctite adhesive and without proper equipment should not be removed in the field but returned to the factory for rebuilding.

Both end plates are CARBON WEAR PLATES which have two (2) usable sides. When one side is worn so as to impair efficiency, the holes in the carbon plates make it possible to "flip" them over and use them on the same end of the pump.

REASSEMBLY

Place the body (if it was removed) against the carbon plate with the inlet port on your right and add the two (2) body bolts. Before tightening the bolts, place a .001 feeler gauge between the top of the rotor and the bore holding the body in position while the body bolts are tightened. Withdraw the feeler gauge and rotate the rotor to be sure all points on the circumference clear the bore. Insert the vanes (see sketch).

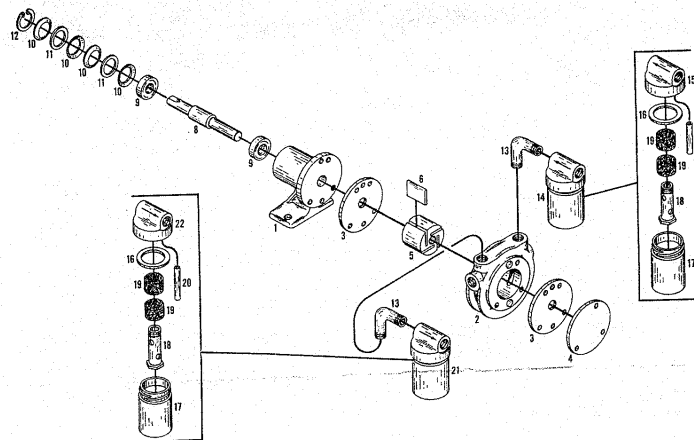
Place the other carbon plate and retainer plate in position, add and tighten the three (3) end plate screws. Should the pump fail to produce the proper vacuum or pressure as when new, the end and top clearance of the rotor should be rechecked.

Authorized service facilities are located at:

Brenner-Fiedler and Associates
16210 Gundry Avenue
Paramount, CA 90723
213-636-3206

Gast Manufacturing Corporation
515 Washington Avenue
Carlstadt, NJ 07072
201-933-8484

Gast Manufacturing Corporation
2300 M-139
Benton Harbor, MI 49022
616-926-6171



REF. NO.	DESCRIPTION	PART NO.	QUANTITY		
			0533 V/P	1033 V/P	1533 V/P
1	End Plate – Foot	AD233	1	1	1
2	Body	AD977			1
2	Body	AF150	1		
2	Body	AF119B		1	
3	Carbon Wear Plate	AD903	2	2	2
4	Retainer Plate	AD906A	1	1	1
5	Rotor	AD978		1	1
5	Rotor	AF136	1		
5	Rotor	AD979		4	4
• 6	Vane	AF138	4		
• 6	Vane	AD234		1	1
8	Shaft	AE834	1		
8	Shaft	AF120	2	2	2
9	Bearing	AF664A	4	4	4
10	Belleville Spring	AE686	2	2	2
11	Shim Washer	AE563	1	1	1
12	Retainer Ring	AD987	2	2	2
13	Elbow	AD922H	1	1	1
14	Filter	AA965B	1	1	1
15	Cover	AA932	1	1	1
• 16	Gasket	AA935A	1	1	1
17	Jar	AA927	1	1	1
18	Felt Support	AA928	2	2	2
19	Felt	AA739	1	1	1
20	Silencing Tube	AA922G	1	1	1
21	Muffler	AA965A	1	1	1
22	Cover	AA932	1	1	1
16	Gasket	AA935A	1	1	1
17	Jar	AA927	1	1	1
18	Felt Support	AA928	2	2	2
• 19	Felt	AA739	1	1	1
20	Silencing Tube				

To Rebuild #0533 - V/P – Order Service Kit – K259
 To Rebuild #1033 - V/P – Order Service Kit – K219
 To Rebuild #1533 - V/P – Order Service Kit – K219

• Indicates items contained in service kit.