

REWORK INSTRUCTIONS

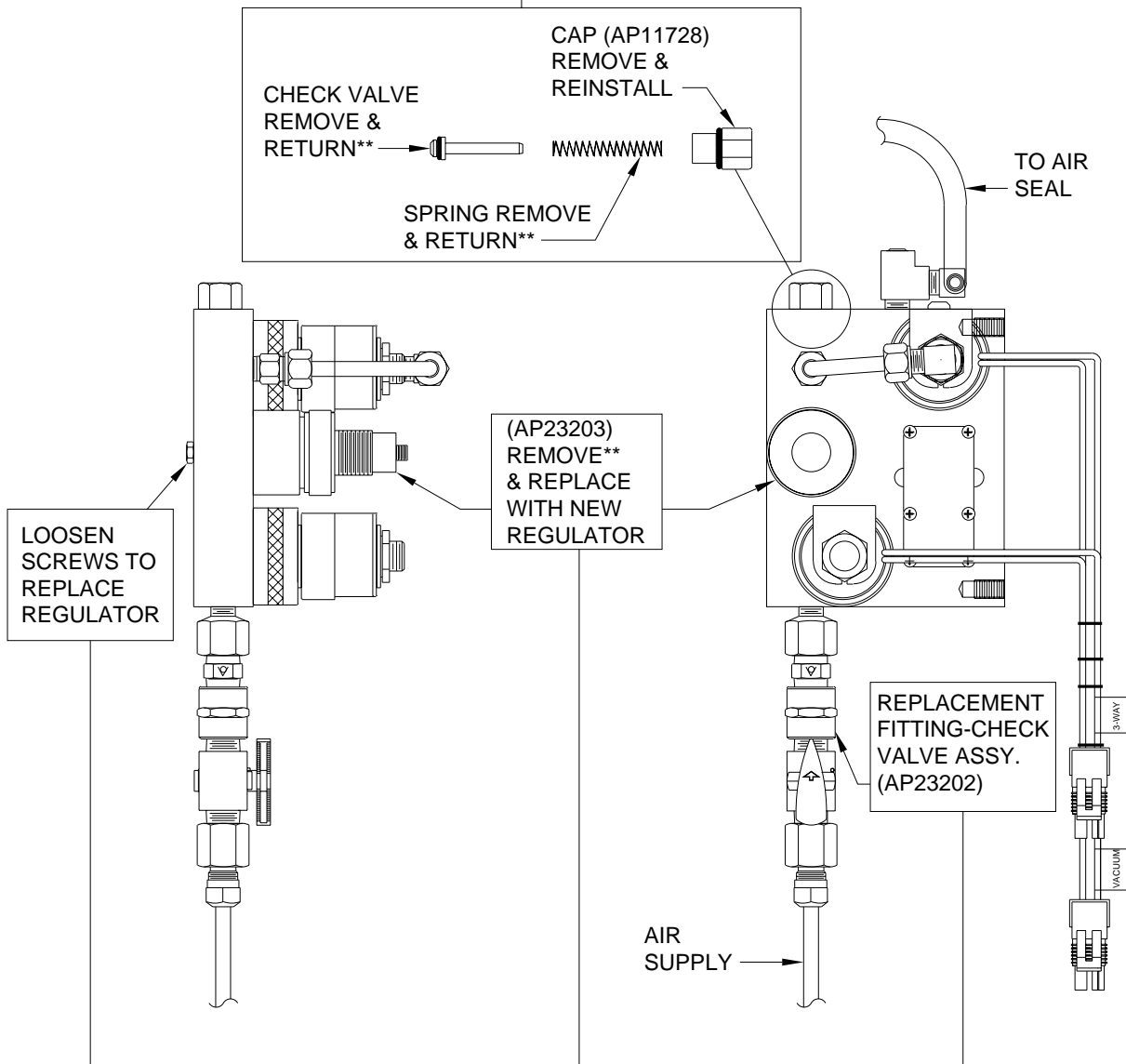
AIR SEAL-PRESSURE/VACUUM MANIFOLD

AP20078

CAUTION:

WEAR SAFETY GLASSES WHEN INSPECTING OR SERVICING THE SYSTEM TO PROTECT EYES FROM DIRT, METAL CHIPS, OIL LEAKS, ETC. FOLLOW ALL OTHER APPLICABLE SHOP SAFETY PRACTICES.

1. REMOVE CAP, SPRING AND CHECK VALVE, SPRING AND CHECK VALVE RETURN TO HWH CORPORATION, REINSTALL CAP. (CAP IS O-RING SEALED)



2. REMOVE OLD REGULATOR AND RETURN TO HWH CORPORATION.
REPLACE WITH NEW REGULATOR (AP23203). (REGULATOR IS O-RING SEALED)
3. REMOVE OLD FITTING AND RETURN TO HWH CORPORATION.
REPLACE WITH NEW (AP23202) FITTING-CHECK VALVE ASSEMBLY.
(USE TEFLON TAPE ON REPLACEMENT FITTING)

**ITEMS TO BE REMOVED AND RETURNED TO HWH CORPORATION ON RGA ALONG WITH WORK ORDER AND COACH INFORMATION. FOR ADDITIONAL INFORMATION CALL 1-800-494-6466.

MI15.000E
12OCT00