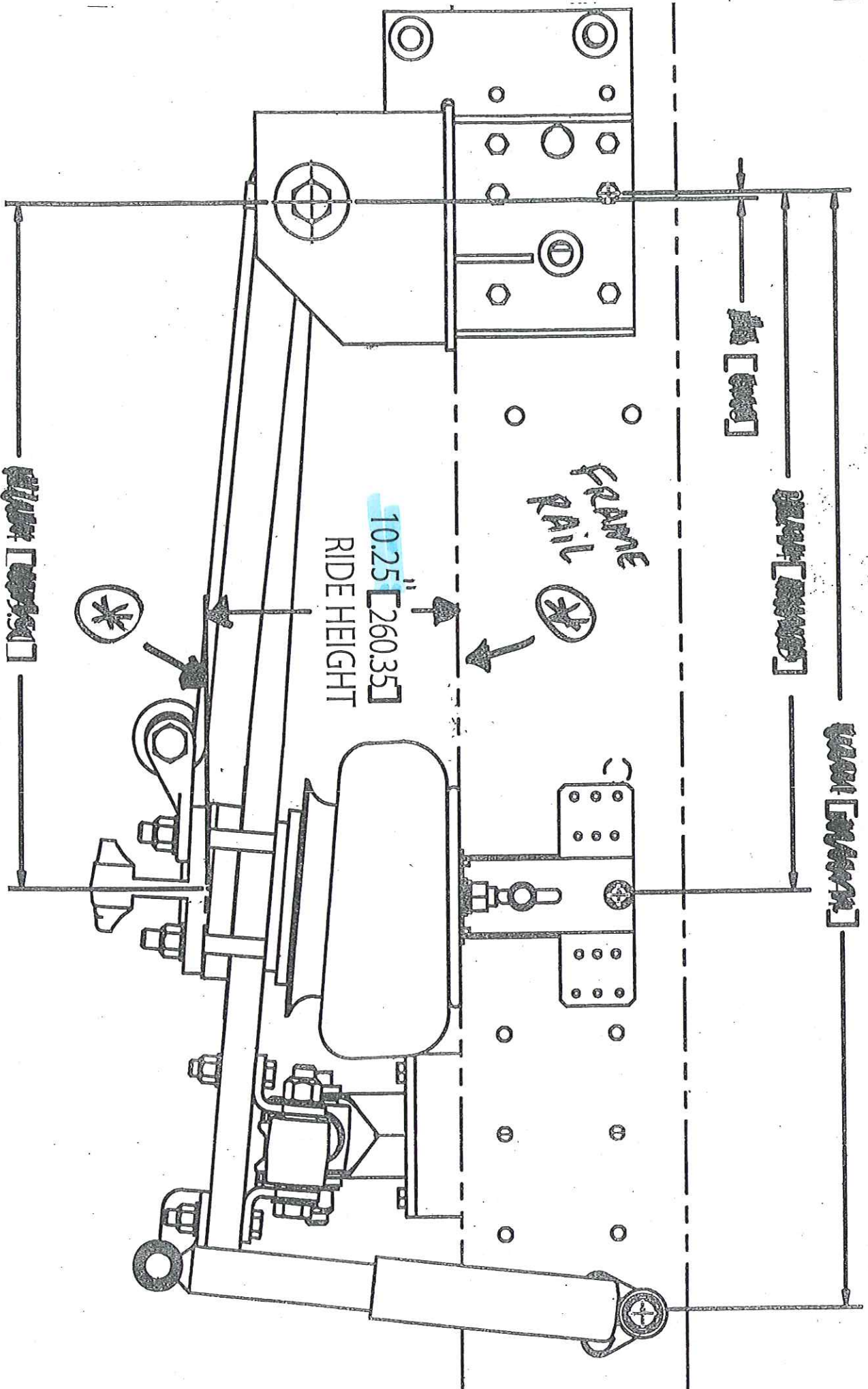




# SPARTAN MOTORS WHEEL ALIGNMENT SPECIFICATIONS

CHASSIS MODEL	SUSPENSION TYPE	FRONT AXLE MAKE		FRONT AXLE MODEL	FRONT ALIGNMENT SPECIFICATIONS				REAR ALIGNMENT SPECIFICATIONS		AIR SUSP. RIDE HEIGHT					
		FRONT AXLE MAKE	FRONT AXLE MODEL		CASTER (1)	+	-	Kingpin Incln(3)	Toe-In	+	-	Pinion Angle	Axle Squareness	Front	Rear	
MA-2242 TB-2242	REYCO (VERST)	EATON	EATON	12001	4.00 deg	0.25 deg	0.25 deg		0.03 in	0.06 in	0	+/- 0.125 in.	4.50 deg.	+/- .125 in.	10.25 in.	8.50 in.
IC-2242	REYCO (VERST)	EATON	EATON	12001	4.00 deg	0.25 deg	0.25 deg		0.03 in	0.06 in.	0	+/- 0.125 in.	4.50 deg.	+/- .125 in.	10.25 in.	8.50 in.
TRADITION	REYCO (VERST)	EATON	EATON	12001	4.00 deg	0.25 deg	0.25 deg		0.03 in	0.06 in.	0	+/- 0.125 in.	4.50 deg.	+/- .125 in.	9.25 in.	7.50 in.
K2	REYCO AIR	EATON	EATON	EFA-12F4	3.25 deg.	0.50 deg	0.50 deg		0.03 in.	0.03 in.	0.03 in.	+/- 0.125 in.	4.50 deg.	+/- .125 in.	9.25 in.	7.50 in.
MA-2242 TB-2242	REYCO AIR	EATON	EATON	EFA-12F4	3.25 deg.	0.50 deg	0.50 deg		0.03 in.	0.03 in.	0.03 in.	+/- 0.125 in.	4.50 deg.	+/- .125 in.	9.25 in.	7.50 in.
MA-2242 OPTIONAL	(2) REYCO AIR	EATON	EATON	EFA-12F4	3.25 deg.	0.50 deg	0.50 deg		0.03 in	0.03 in.	0.03 in.	+/- 0.125 in.	4.50 deg.	+/- .125 in.	10.25 in.	8.50 in.
IC-2242	REYCO AIR	EATON	EATON	EFA-12F4	3.25 deg.	0.50 deg	0.50 deg		0.03 in.	0.03 in.	0.03 in.	+/- 0.125 in.	4.50 deg.	+/- .125 in.	9.25 in.	7.50 in.
ALPINE	GRANNING AIR	WESTPORT	WESTPORT	F5W-0905	4.00 deg.	0.50 deg	0.50 deg	4.50 deg.	0.03 in.	0.03 in.	0.03 in.	+/- 0.25 in.	7.00 deg.	+/- .125 in.	10.85 in.	8.50 in.
EXP / EC-2242 BC-2242	GRANNING AIR	WESTPORT	WESTPORT	F5W-9000	4.00 deg.	0.50 deg	0.50 deg	4.50 deg.	0.03 in.	0.03 in.	0.03 in.	+/- 0.25 in.	7.00 deg.	+/- .125 in.	10.85 in.	8.50 in.
EXP / EC-2242 BC-2242	GRANNING AIR	DANA	DANA	1-60	3.61 deg.	0.50 deg	0.50 deg		0.03 in.	0.03 in.	0.03 in.	+/- 0.25 in.	7.00 deg.	+/- .125 in.	9.85 in.	6.50 in.
IC-2242	SPARTAN SPRING	EATON	EATON	EFA-12F4	3.50 deg.	0.50 deg	0.50 deg	4.50 deg.	0.03 in.	0.03 in.	0.03 in.	+/- 0.25 in.	4.50 deg.	+/- .25 in.		
EC-2242 BC-2242	SPARTAN SPRING	WESTPORT	WESTPORT	F5W-9000	5.50 deg.	0.50 deg	0.50 deg		0.03 in.	0.03 in.	0.03 in.	+/- 0.25 in.	7.00 deg.	+/- .25 in.		
EC-2242 BC-2242	SPARTAN SPRING	DANA	DANA	1-80	5.50 deg.	0.50 deg	0.50 deg		0.03 in.	0.03 in.	0.03 in.	+/- 0.25 in.	7.00 deg.	+/- .25 in.		
SCHOOL BUS	SPRING	EATON	EATON	EFA-12F4	4.00 deg.	0.25 deg	0.25 deg		0.03 in.	0.03 in.	0.03 in.	+/- 0.25 in.	7.00 deg.	+/- .25 in.		
SCHOOL BUS	SPRING	DANA	DANA	1-140	4.00 deg.	0.25 deg	0.25 deg		0.03 in.	0.03 in.	0.03 in.	+/- 0.25 in.	7.00 deg.	+/- .25 in.		

- (1) Caster specifications indicated are measured with respect to the frame rails. Measured angle must be adjusted for rail slope.
- (2) Optional 1" higher ride height is available on some chassis. Questions concerning ride height should be directed to Spartan Motors Customer Service at 1-800-543-4277.
- (3) Kingpin inclination is non-adjustable



FRONT SUSPENSION VIEW