

Chassis

020 Axle, Rear

MERITOR

RC23160

10 INCH BRAKES

From CSN 10096696 RE 11/05/01

1

RS19144

From CSN 30046776 FE 10096696 RE 11/05/01

2

RS21145

From CSN 30046776 FE 10096696 RE 11/05/01

3

RS23160

From CSN 30046776 FE 10096696 RE 11/05/01

4

UK RHD

5

SPICER

J190

To CSN 30046775 FE CSN 10096695 RE 11/04/01

6

J210

To CSN 30046775 FE CSN 10096695 RE 11/04/01

7

J230

To CSN 30046775 FE CSN 10096695 RE 11/04/01

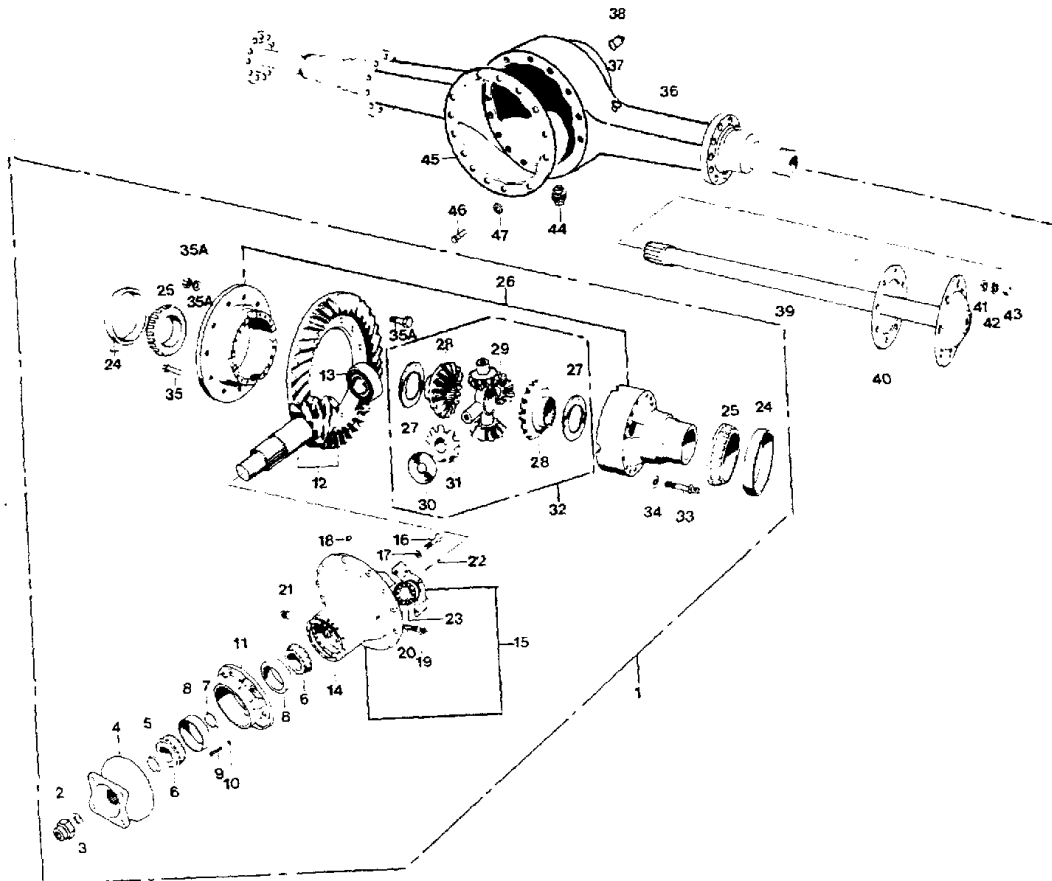
8

Models: A3RE, C4RE
 MERITOR
 RC23160
 10 INCH BRAKES
BSN: From CSN 10096696 RE 11/05/01

| Key | PartNumber | Qty | Description | Comment |
|-----|------------|-----|-------------|---------|
|-----|------------|-----|-------------|---------|

| | |
|--------------------|---------|
| DR 6/14/83 BY JET | 8002362 |
| APP 11-1-83 BY DVB | |

© 1983 BLUE BIRD BODY COMPANY
ALL RIGHTS RESERVED



Models: A3RE, C4RE
MERITOR
RC23160
10 INCH BRAKES
BSN: From CSN 10096696 RE 11/05/01

| Key | PartNumber | Qty | Description | Comment |
|-----|------------|-----|---|--|
| NI | 0047809 | 1 | KIT, CARRIER OVERHAUL | <i>INCLUDES ITEMS 2, 5, 6, 7, 8, 13, 14, 24, 25, 26-32</i> |
| NI | 0047811 | 1 | SEAL & BEARING KIT | <i>INCLUDES ITEMS 5, 6, 8, 13, 24, 25</i> |
| 1 | 0045927 | 1 | CARRIER ASSY,4.10,MERITOR | |
| 1 | 0045925 | 1 | CARRIER ASSY,4.56,MERITOR | |
| 1 | 0053265 | 1 | CARRIER ASSY,4.89 RATIO,RS23160,MERITOR | |
| 1 | 0047195 | 1 | AXLE ASSY,DRIVE,RC23160 | |
| 1 | 0047493 | 1 | CARRIER ASSY,6.14 RATIO | <i>C4RE ONLY</i> |
| 2 | 0083900 | | NUT,PINION,RS 23 | |
| 4 | 0047200 | 1 | YOKE ASSY | |
| 4 | 0043386 | 1 | YOKE ASSY,RS23160,1610 | |
| 4 | 0045929 | 1 | YOKE,DRIVE AXLE | |
| 4 | 0043478 | 1 | YOKE,AXLE,RC23160,1710 | |
| 5 | 0049069 | | SEAL,OIL,PINION,RS/C23160 AXLE | |
| 6 | | | KIT, BEARING, PINION, FWD. & REAR | |
| 7 | 0047832 | 1 | SPACER KIT,RS160 CARRIER | |
| 8 | | | KIT, CUP, PINION BEARING | |
| 12 | 0049053 | 1 | RING GEAR & PINION,4.10,RS23160 | <i>INCLUDES ITEMS 2, 12</i> |
| 12 | 0049055 | 1 | RING GEAR & PINION,4.56,RS23160 | <i>INCLUDES ITEMS 2, 12</i> |
| 12 | 0047824 | 1 | RING GEAR & PINION,4.89 RATIO | <i>INCLUDES ITEMS 2, 12</i> |
| 12 | 0049059 | 1 | RING GEAR & PINION,5.38,RS23160 | <i>INCLUDES ITEMS 2, 12</i> |
| 12 | 0049063 | 1 | RING GEAR & PINION,6.14,RS23160 | <i>C4RE ONLY INCLUDES ITEMS 2, 12</i> |
| 13 | | | KIT, BEARING, PINION, REAR | |
| 14 | 0047831 | 1 | SHIM KIT,RS160 CARRIER | |
| 24 | | | KIT, CUP, DIFFERENTIAL BEARING | |
| 25 | | | KIT, CONE, DIFFERENTIAL BEARING | |
| 26 | | 1 | KIT, CASE ASSY., DIFFERENTIAL | <i>INCLUDES ITEMS 26-32</i> |
| 26 | 0049070 | 1 | CASE & NEST ASSY,MAIN DIFF,3.91 - 4.56 | <i>INCLUDES ITEMS 26-32</i> |
| 26 | 0047825 | 1 | CASE & NEST ASSY,MAIN DIFF,4.89 - 7.17 | <i>INCLUDES ITEMS 26-32</i> |
| 27 | | | KIT, WASHER, THRUST DIFF. SIDE GEAR | |
| 28 | | | KIT, GEAR, DIF. SIDE | |
| 29 | | | KIT, SPIDER, DIFF. | |
| 30 | | | KIT, WASHER, DIFFERENTIAL PINION | |

Models: A3RE, C4RE
 MERITOR
 RC23160
 10 INCH BRAKES
BSN: From CSN 10096696 RE 11/05/01

| Key | PartNumber | Qty | Description | Comment |
|-----|------------|-----|--|-----------------------------|
| 31 | | | KIT, GEAR, DIFFERENTIAL PINION | |
| 32 | 0047810 | 1 | KIT,MAIN DIFFERENTIAL W/ SPIDER | <i>INCLUDES ITEMS 27-32</i> |
| 36 | 0043474 | 1 | AXLE HOUSING ASSY,DOWELS,BRACKETS,ABS, | |
| 37 | 2593150 | 1 | BREATHER ASSY HOUSING | |
| 38 | 0043361 | 1 | PLUG ASSY,HEAT IND | |
| 39 | 0043476 | 1 | SHAFT,AXLE,LH | |
| 39 | 0043477 | 1 | SHAFT,AXLE,RH | |
| 40 | 0043449 | 2 | GASKET | |
| 41 | 0929091 | 16 | DOWEL,AXLE SHAFT | |
| 42 | 2603512 | 16 | WASHER,AXLE SHAFT | |
| 43 | 2594893 | 16 | NUT,AXLE SHAFT | |
| 44 | 2121887 | 1 | PLUG,AXLE HOUSING DRAIN,MAGNETIC" | <i>MAGNETIC</i> |
| 46 | 0043447 | 1 | KIT,CAPSCREW | |
| 47 | 2602712 | 12 | WASHER | |

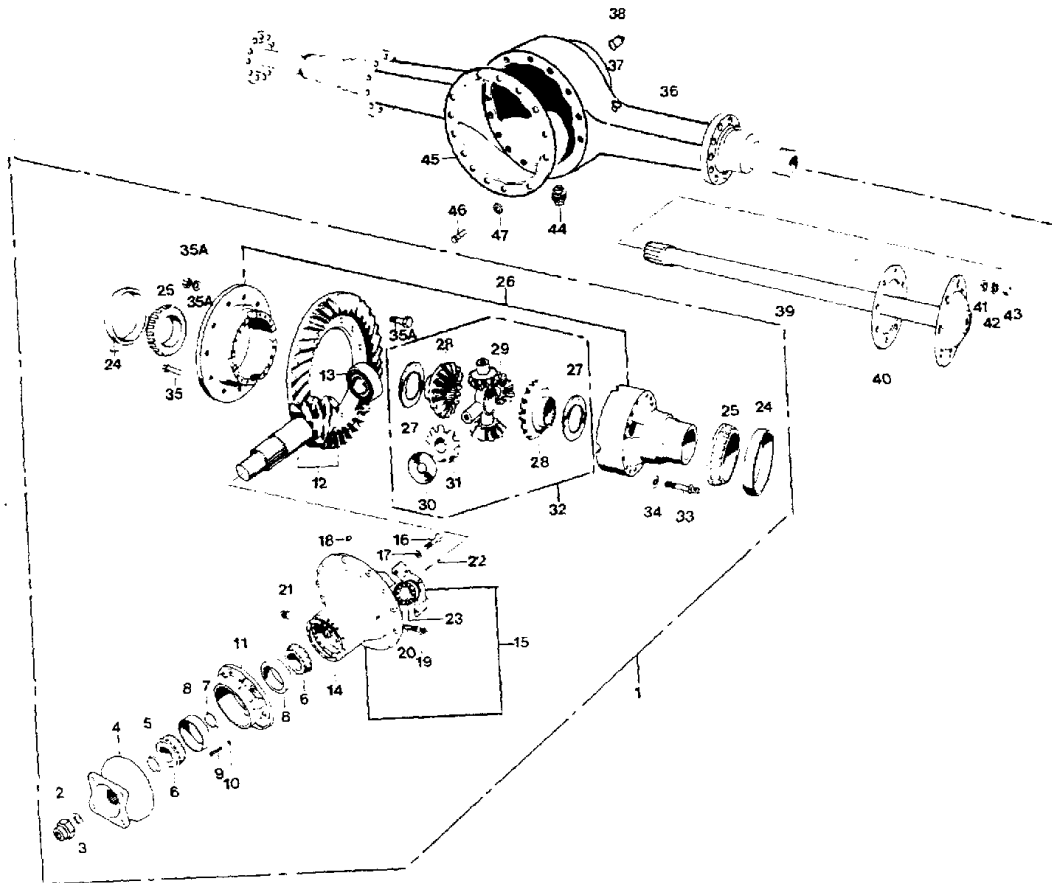
Models: A3FE, A3RE, C3FE, CSFE, CSRE, QBRE, TCFE
MERITOR
RS19144

BSN: From CSN 30046776 FE 10096696 RE 11/05/01

| Key | PartNumber | Qty | Description | Comment |
|-----|------------|-----|-------------|---------|
|-----|------------|-----|-------------|---------|

| | |
|--------------------|---------|
| DR 6/14/83 BY JET | 8002362 |
| APP 11-1-83 BY DVB | |

© 1983 BLUE BIRD BODY COMPANY
 ALL RIGHTS RESERVED



Models: A3FE, A3RE, C3FE, CSFE, CSRE, QBRE, TCFE
MERITOR
RS19144
BSN: From CSN 30046776 FE 10096696 RE 11/05/01

| Key | PartNumber | Qty | Description | Comment |
|-----|------------|-----|--|--|
| NI | 0049291 | 1 | KIT,CARRIER OVERHAUL,RS21145 | <i>INCLUDES ITEMS 2, 5, 6, 7, 8, 13, 14, 24, 25, 26-32</i> |
| NI | 0049292 | 1 | KIT,CARRIER BEARINGS & OIL SEALS,RS21145 | <i>INCLUDES ITEMS 5, 6, 8, 13, 24, 25</i> |
| 1 | 0045265 | 1 | CARRIER ASSY,4.33 RATIO | |
| 1 | 0047431 | 1 | CARRIER ASSY,NO-SPIN,4.33 RATIO | <i>NO-SPIN</i> |
| 1 | 0043423 | 1 | CARRIER ASSY,RS21145,4.88 RATIO,1610 | |
| 1 | 0049495 | 1 | CARRIER ASSY,4.88 RATIO,NO-SPIN | <i>NO-SPIN</i> |
| 1 | 0043339 | 1 | CARRIER ASSY,RS21145,5.29 RATIO | |
| 1 | 0047428 | 1 | CARRIER ASSY,NO-SPIN,5.29 RATIO | <i>NO-SPIN</i> |
| 2 | 0068612 | | NUT,PINION,RS19/21 | |
| 4 | 0021905 | 1 | YOKE END, R-125 REAR SERVICE" | <i>YOKE & DEFLECTOR</i> |
| 4 | 0043353 | 1 | YOKE,RS21145,1610 | |
| 4 | 0045915 | 1 | YOKE,RS19144 | |
| 4 | 0047432 | 1 | YOKE,AXLE,DRIVE | |
| 5 | 0049282 | 1 | SEAL,OIL,PINION,RS19144/21145 | |
| 6 | | | KIT, BEARING, PINION, FWD. & REAR | |
| 7 | 0049284 | 1 | KIT,SPACER,RS21145 | |
| 8 | | | KIT, CUP, PINION BEARING | |
| 12 | 0049285 | 1 | RING GEAR & PINION,4.33,RS21145 | <i>INCLUDES ITEMS 2, 12</i> |
| 12 | 0049286 | 1 | RING GEAR & PINION,4.88,RS21145 | <i>INCLUDES ITEMS 2, 12</i> |
| 12 | 0049287 | 1 | RING GEAR & PINION,5.29,RS21145 | <i>INCLUDES ITEMS 2, 12</i> |
| 13 | | | KIT, BEARING, PINION, REAR | |
| 14 | 0049283 | 1 | KIT,SHIM,RS21145 | |
| 24 | | | KIT, CUP, DIFFERENTIAL BEARING | |
| 25 | | | KIT, CONE, DIFFERENTIAL BEARING | |
| 26 | 0049289 | 1 | CASE & NEST ASSY,DIFF,4.30-7.17,RS21145 | <i>INCLUDES ITEMS 26-32</i> |
| 26 | 0049290 | 1 | CASE & NEST ASSY,NO-SPIN,DIFF,4.30-7.17, | <i>NO-SPIN INCLUDES ITEMS 26-32</i> |
| 27 | | | KIT, WASHER, THRUST DIFF. SIDE GEAR | |
| 28 | | | KIT, GEAR, DIF. SIDE | |
| 29 | | | KIT, SPIDER, DIFF. | |
| 30 | | | KIT, WASHER, DIFFERENTIAL PINION | |
| 31 | | | KIT, GEAR, DIFFERENTIAL PINION | |
| 32 | 0049293 | 1 | DIFF NEST & SPIDER,RS21145 | <i>INCLUDES ITEMS 27-32</i> |
| 32 | 0049504 | 1 | KIT,DIFFERENTIAL ASSY,21145 | <i>NO-SPIN INCLUDES ITEMS 27-32</i> |

Models: A3FE, A3RE, C3FE, CSFE, CSRE, QBRE, TCFE
MERITOR
RS19144
BSN: From CSN 30046776 FE 10096696 RE 11/05/01

| Key | PartNumber | Qty | Description | Comment |
|-----|------------|-----|--|-----------------------|
| 36 | 0045669 | 1 | HOUSING ASSY,W/ DOWELS,ABS,RS19144 | |
| 36 | 0043349 | 1 | AXLE HOUSING,RS21145,W/DOWELS, | |
| 36 | 0045941 | 1 | HOUSING,AXLE,RS19144,W/ DOWELS | HYDRAULIC BRAKES ONLY |
| 36 | 0044797 | 1 | AXLE HOUSING,W/ DOWELS,BRACKETS,ABS, | HYDRAULIC BRAKES ONLY |
| 36 | 0043482 | 1 | AXLE HOUSING,W/ DOWELS,ABS,RS21145 | |
| 36 | 0043490 | 1 | AXLE HOUSING,W/ DOWELS,BRACKETS,ABS, | |
| 36 | 0043474 | 1 | AXLE HOUSING ASSY,DOWELS,BRACKETS,ABS, | |
| 37 | 2593150 | 1 | BREATHER ASSY HOUSING | |
| 38 | 0043361 | 1 | PLUG ASSY,HEAT IND | |
| 39 | 0043351 | 1 | SHAFT,AXLE,LH | |
| 39 | 0043352 | 1 | SHAFT,AXLE,RH | |
| 39 | 0047429 | 1 | SHAFT,AXLE,DRIVE,LH | NO SPIN ONLY |
| 39 | 0047430 | 1 | SHAFT,AXLE,DRIVE,RH | NO SPIN ONLY |
| 40 | 0043449 | 2 | GASKET | |
| 41 | 0929091 | 16 | DOWEL,AXLE SHAFT | |
| 42 | 2603512 | 16 | WASHER,AXLE SHAFT | |
| 43 | 2594893 | 16 | NUT,AXLE SHAFT | |
| 44 | 2121887 | 1 | PLUG,AXLE HOUSING DRAIN,MAGNETIC" | MAGNETIC |
| 46 | 0043447 | 1 | KIT,CAPSCREW | |
| 47 | 2602712 | 12 | WASHER | |

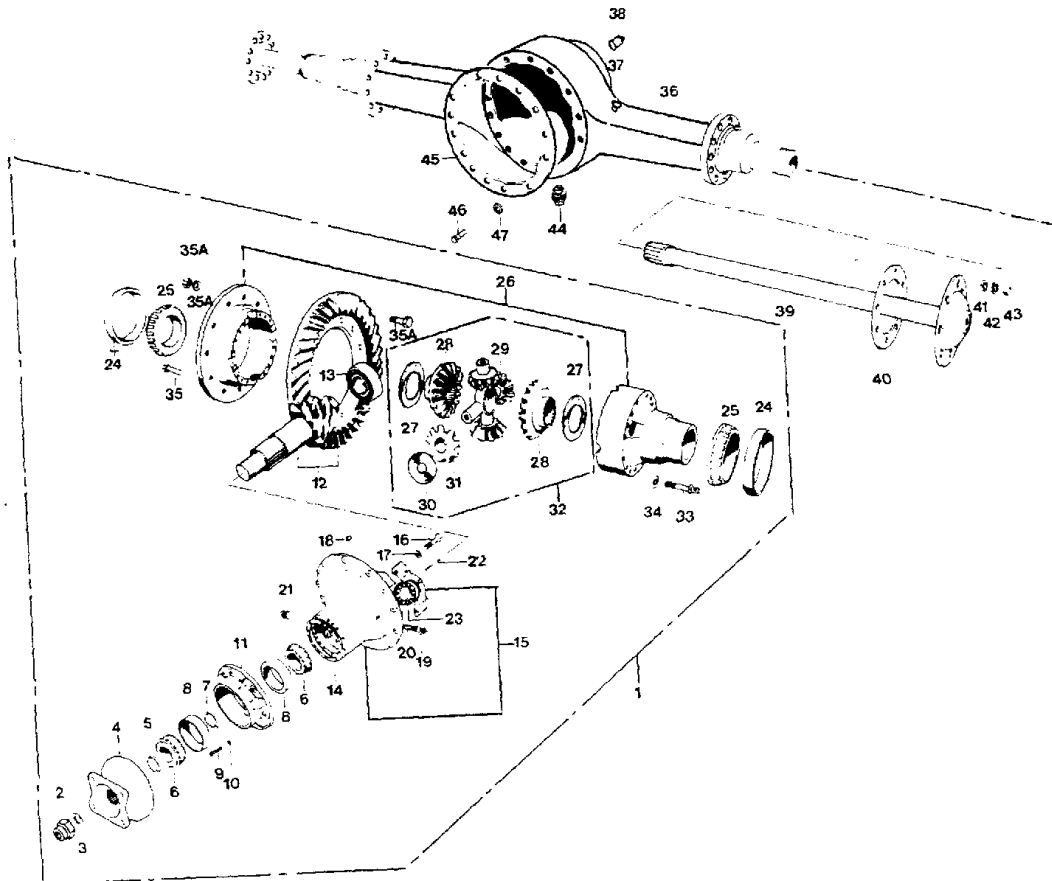
Models: A3FE, A3RE, C3FE, CSFE, CSRE, QBRE, TCFE
MERITOR
RS21145

BSN: From CSN 30046776 FE 10096696 RE 11/05/01

| Key | PartNumber | Qty | Description | Comment |
|-----|------------|-----|-------------|---------|
|-----|------------|-----|-------------|---------|

| | |
|--------------------|---------|
| DR 6/14/83 BY JET | 8002362 |
| APP 11-1-83 BY DVB | |

© 1983 BLUE BIRD BODY COMPANY
 ALL RIGHTS RESERVED



Models: A3FE, A3RE, C3FE, CSFE, CSRE, QBRE, TCFE
MERITOR
RS21145
BSN: From CSN 30046776 FE 10096696 RE 11/05/01

| Key | PartNumber | Qty | Description | Comment |
|-----|------------|-----|--|--|
| NI | 0049291 | 1 | KIT,CARRIER OVERHAUL,RS21145 | <i>INCLUDES ITEMS 2, 5, 6, 7, 8, 13, 14, 24, 25, 26-32</i> |
| NI | 0049292 | 1 | KIT,CARRIER BEARINGS & OIL SEALS,RS21145 | <i>INCLUDES ITEMS 5, 6, 8, 13, 24, 25</i> |
| 1 | 0045265 | 1 | CARRIER ASSY,4.33 RATIO | |
| 1 | 0047431 | 1 | CARRIER ASSY,NO-SPIN,4.33 RATIO | <i>NO-SPIN</i> |
| 1 | 0043423 | 1 | CARRIER ASSY,RS21145,4.88 RATIO,1610 | |
| 1 | 0049495 | 1 | CARRIER ASSY,4.88 RATIO,NO-SPIN | <i>NO-SPIN</i> |
| 1 | 0043339 | 1 | CARRIER ASSY,RS21145,5.29 RATIO | |
| 1 | 0047428 | 1 | CARRIER ASSY,NO-SPIN,5.29 RATIO | <i>NO-SPIN</i> |
| 1 | 0047433 | 1 | CARRIER ASSY,6.14 RATIO | |
| 2 | 0068612 | | NUT,PINION,RS19/21 | |
| 4 | 0021905 | 1 | YOKE END, R-125 REAR SERVICE" | |
| 4 | 0043353 | 1 | YOKE,RS21145,1610 | |
| 4 | 0045915 | 1 | YOKE,RS19144 | |
| 4 | 0047432 | 1 | YOKE,AXLE,DRIVE | |
| 5 | 0049282 | | SEAL,OIL,PINION,RS19144/21145 | |
| 6 | | | KIT, BEARING, PINION, FWD. & REAR | |
| 7 | 0049284 | 1 | KIT,SPACER,RS21145 | |
| 8 | | | KIT, CUP, PINION BEARING | |
| 12 | 0049285 | 1 | RING GEAR & PINION,4.33,RS21145 | <i>INCLUDES ITEMS 2, 12</i> |
| 12 | 0049286 | 1 | RING GEAR & PINION,4.88,RS21145 | <i>INCLUDES ITEMS 2, 12</i> |
| 12 | 0049287 | 1 | RING GEAR & PINION,5.29,RS21145 | <i>INCLUDES ITEMS 2, 12</i> |
| 12 | 0049288 | 1 | RING GEAR & PINION,6.14,RS21145 | <i>INCLUDES ITEMS 2, 12</i> |
| 13 | | | KIT, BEARING, PINION, REAR | |
| 14 | 0049283 | 1 | KIT,SHIM,RS21145 | |
| 24 | | | KIT, CUP, DIFFERENTIAL BEARING | |
| 25 | | | KIT, CONE, DIFFERENTIAL BEARING | |
| 26 | 0049289 | 1 | CASE & NEST ASSY,DIFF,4.30-7.17,RS21145 | <i>INCLUDES ITEMS 26-32</i> |
| 26 | 0049290 | 1 | CASE & NEST ASSY,NO-SPIN,DIFF,4.30-7.17, | <i>NO-SPIN INCLUDES ITEMS 26-32</i> |
| 27 | | | KIT, WASHER, THRUST DIFF. SIDE GEAR | |
| 28 | | | KIT, GEAR, DIF. SIDE | |
| 29 | | | KIT, SPIDER, DIFF. | |
| 30 | | | KIT, WASHER, DIFFERENTIAL PINION | |
| 31 | | | KIT, GEAR, DIFFERENTIAL PINION | |

Models: A3FE, A3RE, C3FE, CSFE, CSRE, QBRE, TCFE
MERITOR
RS21145
BSN: From CSN 30046776 FE 10096696 RE 11/05/01

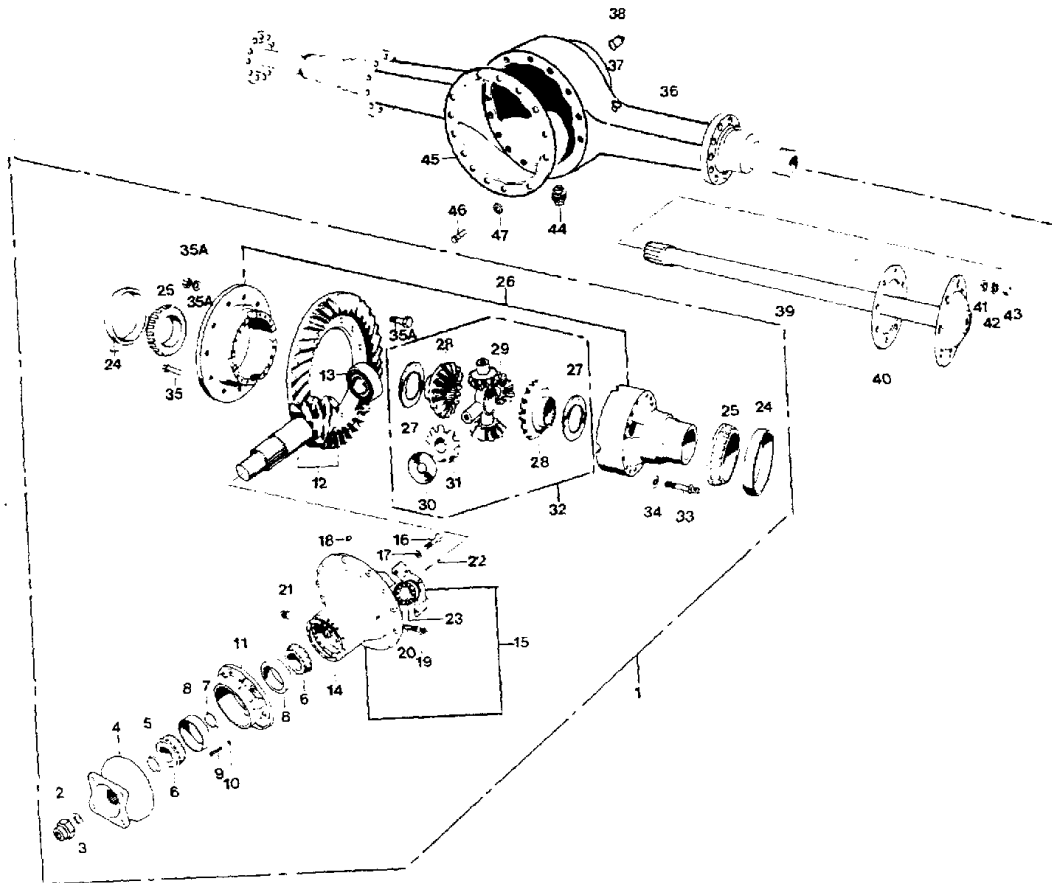
| Key | PartNumber | Qty | Description | Comment |
|-----|------------|-----|--|-----------------------------|
| 32 | 0049293 | 1 | DIFF NEST & SPIDER,RS21145 | <i>INCLUDES ITEMS 27-32</i> |
| 32 | 0049504 | 1 | KIT,DIFFERENTIAL ASSY,21145 | <i>NO-SPIN</i> |
| 36 | | | HOUSING ASSY., AXLE | |
| 36 | 0045669 | 1 | HOUSING ASSY,W/ DOWELS,ABS,RS19144 | |
| 36 | 0043349 | 1 | AXLE HOUSING,RS21145,W/DOWELS, | |
| 36 | 0043482 | 1 | AXLE HOUSING,W/ DOWELS,ABS,RS21145 | |
| 36 | 0043490 | 1 | AXLE HOUSING,W/ DOWELS,BRACKETS,ABS, | |
| 36 | 0043474 | 1 | AXLE HOUSING ASSY,DOWELS,BRACKETS,ABS, | |
| 37 | 2593150 | 1 | BREATHER ASSY HOUSING | |
| 38 | 0043361 | 1 | PLUG ASSY,HEAT IND | |
| 39 | | | SHAFT, AXLE | |
| 39 | 0043351 | 1 | SHAFT,AXLE,LH | |
| 39 | 0043352 | 1 | SHAFT,AXLE,RH | |
| 39 | 0047429 | 1 | SHAFT,AXLE,DRIVE,LH | <i>NO SPIN ONLY</i> |
| 39 | 0047430 | 1 | SHAFT,AXLE,DRIVE,RH | <i>NO SPIN ONLY</i> |
| 40 | 0043449 | 2 | GASKET | |
| 41 | 0929091 | 16 | DOWEL,AXLE SHAFT | |
| 42 | 2603512 | 16 | WASHER,AXLE SHAFT | |
| 43 | 2594893 | 16 | NUT,AXLE SHAFT | |
| 44 | 2121887 | 1 | PLUG,AXLE HOUSING DRAIN,MAGNETIC" | <i>MAGNETIC</i> |
| 46 | 0043447 | 1 | KIT,CAPSCREW | |
| 47 | 2602712 | 12 | WASHER | |

Models: A3FE, A3RE, C3FE, C4RE, CSFE, CSRE, QBRE, TCFE
MERITOR
RS23160
BSN: From CSN 30046776 FE 10096696 RE 11/05/01

| Key | PartNumber | Qty | Description | Comment |
|-----|------------|-----|-------------|---------|
|-----|------------|-----|-------------|---------|

| | |
|--------------------|---------|
| DR 6/14/83 BY JET | 8002362 |
| APP 11-1-83 BY DVB | |

© 1983 BLUE BIRD BODY COMPANY
 ALL RIGHTS RESERVED



Models: A3FE, A3RE, C3FE, C4RE, CSFE, CSRE, QBRE, TCFE
MERITOR
RS23160
BSN: From CSN 30046776 FE 10096696 RE 11/05/01

| Key | PartNumber | Qty | Description | Comment |
|-----|------------|-----|---|--|
| NI | 0047809 | 1 | KIT, CARRIER OVERHAUL | <i>INCLUDES ITEMS 2, 5, 6, 7, 8, 13, 14, 24, 25, 26-32</i> |
| NI | 0047811 | 1 | SEAL & BEARING KIT | <i>INCLUDES ITEMS 5, 6, 8, 13, 24, 25</i> |
| 1 | 0045927 | 1 | CARRIER ASSY,4.10,MERITOR | |
| 1 | 0049490 | 1 | CARRIER ASSY,4.10 RATIO,NO-SPIN | <i>NO-SPIN</i> |
| 1 | 0045925 | 1 | CARRIER ASSY,4.56,MERITOR | |
| 1 | 0049491 | 1 | CARRIER ASSY,4.56 RATIO,NO-SPIN | <i>NO-SPIN</i> |
| 1 | 0053265 | 1 | CARRIER ASSY,4.89 RATIO,RS23160,MERITOR | |
| 1 | 0049492 | 1 | CARRIER ASSY,4.89 RATIO,NO-SPIN | <i>NO-SPIN</i> |
| 1 | 0047195 | 1 | AXLE ASSY,DRIVE,RC23160 | |
| 1 | 0047471 | 1 | CARRIER ASSY,5.38 RATIO,NO-SPIN | <i>NO-SPIN</i> |
| 1 | 0047493 | 1 | CARRIER ASSY,6.14 RATIO | <i>C4RE ONLY</i> |
| 2 | 0083900 | | NUT,PINION,RS 23 | |
| 4 | 0047200 | 1 | YOKE ASSY | |
| 4 | 0043386 | 1 | YOKE ASSY,RS23160,1610 | |
| 4 | 0045929 | 1 | YOKE,DRIVE AXLE | |
| 4 | 0043478 | 1 | YOKE,AXLE,RC23160,1710 | |
| 5 | 0049069 | | SEAL,OIL,PINION,RS/C23160 AXLE | |
| 6 | | | KIT, BEARING, PINION, FWD. & REAR | |
| 7 | 0047832 | 1 | SPACER KIT,RS160 CARRIER | |
| 8 | | | KIT, CUP, PINION BEARING | |
| 12 | 0049053 | 1 | RING GEAR & PINION,4.10,RS23160 | <i>INCLUDES ITEMS 2, 12</i> |
| 12 | 0049055 | 1 | RING GEAR & PINION,4.56,RS23160 | <i>INCLUDES ITEMS 2, 12</i> |
| 12 | 0047824 | 1 | RING GEAR & PINION,4.89 RATIO | <i>INCLUDES ITEMS 2, 12</i> |
| 12 | 0049059 | 1 | RING GEAR & PINION,5.38,RS23160 | <i>INCLUDES ITEMS 2, 12</i> |
| 12 | 0049063 | 1 | RING GEAR & PINION,6.14,RS23160 | <i>C4RE ONLY</i> |
| 13 | | | KIT, BEARING, PINION, REAR | |
| 14 | 0047831 | 1 | SHIM KIT,RS160 CARRIER | |
| 24 | | | KIT, CUP, DIFFERENTIAL BEARING | |
| 25 | | | KIT, CONE, DIFFERENTIAL BEARING | |
| 26 | 0049070 | 1 | CASE & NEST ASSY,MAIN DIFF,3.91 - 4.56 | <i>INCLUDES ITEMS 26-32</i> |
| 26 | 0047825 | 1 | CASE & NEST ASSY,MAIN DIFF,4.89 - 7.17 | <i>INCLUDES ITEMS 26-32</i> |
| 26 | 0049497 | 1 | CASE & NO-SPIN ASSY,MAIN DIFF,3.91 | <i>NO-SPIN INCLUDES ITEMS 26-32</i> |
| 26 | 0049498 | 1 | CASE & NO-SPIN ASSY,MAIN DIFF,4.89 | <i>NO-SPIN INCLUDES ITEMS 26-32</i> |

Models: A3FE, A3RE, C3FE, C4RE, CSFE, CSRE, QBRE, TCFE
MERITOR
RS23160
BSN: From CSN 30046776 FE 10096696 RE 11/05/01

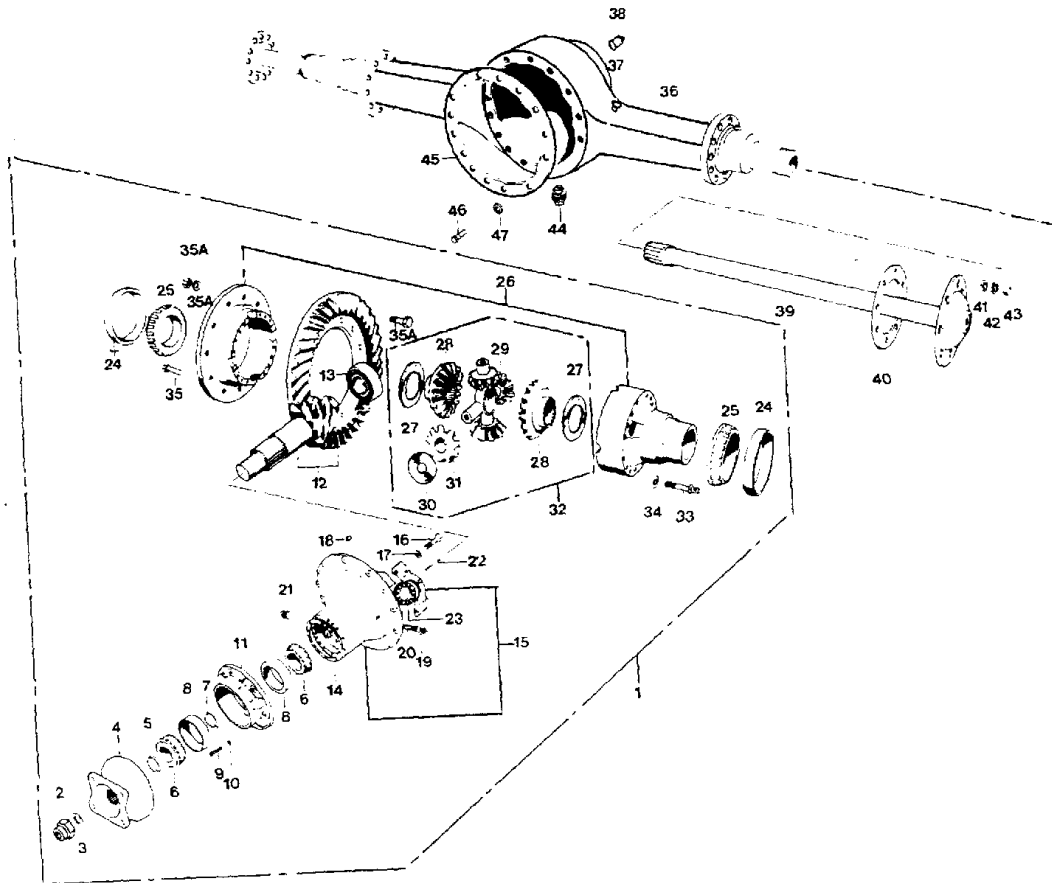
| Key | PartNumber | Qty | Description | Comment |
|-----|------------|-----|--------------------------------------|-------------------------------------|
| 27 | | | KIT, WASHER, THRUST DIFF. SIDE GEAR | |
| 28 | | | KIT, GEAR, DIF. SIDE | |
| 29 | | | KIT, SPIDER, DIFF. | |
| 30 | | | KIT, WASHER, DIFFERENTIAL PINION | |
| 31 | | | KIT, GEAR, DIFFERENTIAL PINION | |
| 32 | 0047810 | 1 | KIT,MAIN DIFFERENTIAL W/ SPIDER | <i>INCLUDES ITEMS 27-32</i> |
| 32 | 0049499 | 1 | DIFFERENTIAL ASSY,NO-SPIN,23160 | <i>NO-SPIN INCLUDES ITEMS 27-32</i> |
| 36 | | | HOUSING ASSY., AXLE | |
| 36 | 0043382 | 1 | AXLE HOUSING,RS23160,W/ DOWELS & ABS | |
| 36 | 0045942 | 1 | HOUSING,AXLE,RS23160,W/ DOWELS, | |
| 36 | 0043494 | 1 | AXLE HOUSING,W/ DOWELS,ABS,RS23160 | |
| 36 | 0045670 | 1 | HOUSING ASSY,W/ DOWELS,BRACKETS,ABS | |
| 37 | 2593150 | 1 | BREATHER ASSY HOUSING | |
| 38 | 0043361 | 1 | PLUG ASSY,HEAT IND | |
| 39 | | | SHAFT, AXLE | |
| 39 | 0043387 | 1 | SHAFT,AXLE,RS23160,LH | |
| 39 | 0043388 | 1 | SHAFT,AXLE,RS23160,RH | |
| 40 | 0043449 | 2 | GASKET | |
| 41 | 0929091 | 16 | DOWEL,AXLE SHAFT | |
| 42 | 2603512 | 16 | WASHER,AXLE SHAFT | |
| 43 | 2594893 | 16 | NUT,AXLE SHAFT | |
| 44 | 2121887 | 1 | PLUG,AXLE HOUSING DRAIN,MAGNETIC" | <i>MAGNETIC</i> |
| 46 | 0043447 | 1 | KIT,CAPSCREW | |
| 47 | 2602712 | 12 | WASHER | |

Models:
A3RE
MERITOR
RS23160
UK RHD

| Key | PartNumber | Qty | Description | Comment |
|-----|------------|-----|-------------|---------|
|-----|------------|-----|-------------|---------|

| | |
|--------------------|---------|
| DR 6/14/83 BY JET | 8002362 |
| APP 11-1-83 BY DVB | |

© 1983 BLUE BIRD BODY COMPANY
 ALL RIGHTS RESERVED



Models:
A3RE
MERITOR
RS23160
UK RHD

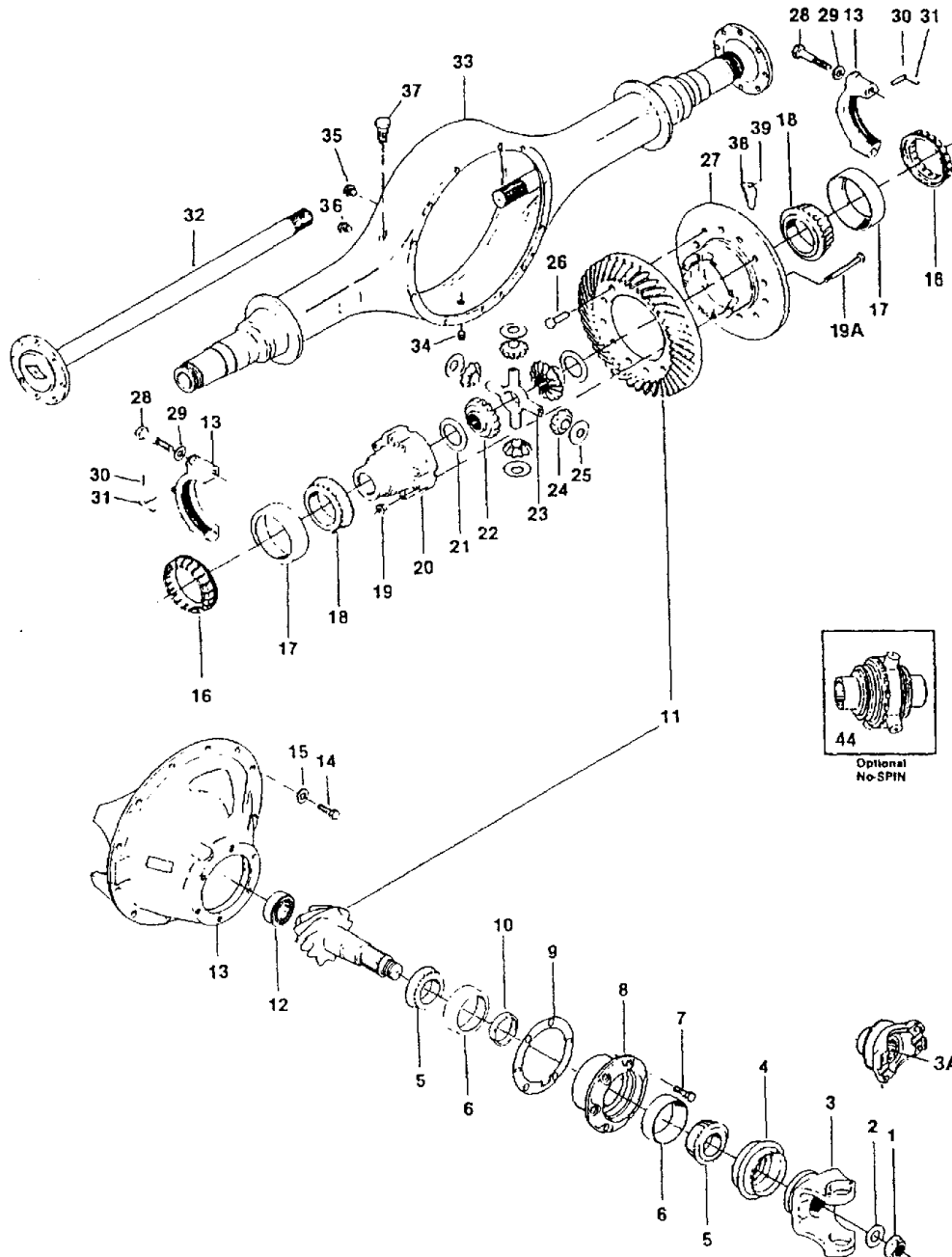
| Key | PartNumber | Qty | Description | Comment |
|-----|------------|-----|--|---|
| NI | 0047809 | 1 | KIT, CARRIER OVERHAUL | |
| NI | 0047811 | 1 | SEAL & BEARING KIT | <i>INCLUDES ITEMS 5, 6, 8, 13, 24, 25</i> |
| 1 | 0043385 | 1 | CARRIER ASSY,RS23160,4.89 RATIO,1610 | |
| 2 | 0083900 | | NUT,PINION,RS 23 | |
| 4 | 0043386 | 1 | YOKE ASSY,RS23160,1610 | |
| 5 | 0049069 | | SEAL,OIL,PINION,RS/C23160 AXLE | |
| 6 | | | KIT, BEARING, PINION, FWD. & REAR | |
| 7 | 0047832 | 1 | SPACER KIT,RS160 CARRIER | |
| 8 | | | KIT, CUP, PINION BEARING | |
| 12 | 0047824 | 1 | RING GEAR & PINION,4.89 RATIO | <i>INCLUDES ITEMS 2, 12</i> |
| 13 | | | KIT, BEARING, PINION, REAR | |
| 14 | 0047831 | 1 | SHIM KIT,RS160 CARRIER | |
| 24 | | | KIT, CUP, DIFFERENTIAL BEARING | |
| 25 | | | KIT, CONE, DIFFERENTIAL BEARING | |
| 26 | 0047825 | 1 | CASE & NEST ASSY,MAIN DIFF,4.89 - 7.17 | <i>INCLUDES ITEMS 26-32</i> |
| 27 | | | KIT, WASHER, THRUST DIFF. SIDE GEAR | |
| 28 | | | KIT, GEAR, DIF. SIDE | |
| 29 | | | KIT, SPIDER, DIFF. | |
| 30 | | | KIT, WASHER, DIFFERENTIAL PINION | |
| 31 | | | KIT, GEAR, DIFFERENTIAL PINION | |
| 32 | 0047810 | 1 | KIT,MAIN DIFFERENTIAL W/ SPIDER | <i>INCLUDES ITEMS 27-32</i> |
| 36 | 0043494 | 1 | AXLE HOUSING,W/ DOWELS,ABS,RS23160 | |
| 37 | 2593150 | 1 | BREATHER ASSY HOUSING | |
| 38 | 0043361 | 1 | PLUG ASSY,HEAT IND | |
| 39 | 0043387 | 1 | SHAFT,AXLE,RS23160,LH | |
| 39 | 0043388 | 1 | SHAFT,AXLE,RS23160,RH | |
| 40 | 0043449 | 2 | GASKET | |
| 41 | 0929091 | 16 | DOWEL,AXLE SHAFT | |
| 42 | 2603512 | 16 | WASHER,AXLE SHAFT | |
| 43 | 2594893 | 16 | NUT,AXLE SHAFT | |
| 44 | 2121887 | 1 | PLUG,AXLE HOUSING DRAIN,MAGNETIC" | <i>MAGNETIC</i> |
| 46 | 0043447 | 12 | KIT,CAPSCREW | |
| 47 | 2602712 | 12 | WASHER | |

Models: A3FE, A3RE, CSFE, CSRE, QBRE, TCFE, TCRE
 SPICER
 J190
 To CSN 30046775 FE CSN 10096695 RE 11/04/01

| Key | PartNumber | Qty | Description | Comment |
|-----|------------|-----|-------------|---------|
|-----|------------|-----|-------------|---------|

| | | | | |
|-----|----|-----|---------|---|
| DR | BY | FRT | 4301305 | A |
| APP | BY | | | |

© 1991 BLUE BIRD BODY COMPANY. ALL RIGHTS RESERVED.



Models: A3FE, A3RE, CSFE, CSRE, QBRE, TCFE, TCRE
SPICER
J190
To CSN 30046775 FE CSN 10096695 RE 11/04/01

| Key | PartNumber | Qty | Description | Comment |
|-----|------------|-----|--|---|
| 1 | 4304689 | | NUT,PINION,1480,J190S | |
| 1 | 4281218 | | NUT,PINION,J190S,TC2000 | |
| 2 | 4281028 | | WASHER,PINION NUT,J190S,TC2000 | |
| 3A | 0035527 | | END YOKE ASSY. | 1550-AT545 A3RE |
| 3A | 4281036 | | END YOKE ASSY,J190S,TC2000" | 1480-AT545 STANDARD CSFE, TCFE |
| 3A | 4304531 | | FLANGE,COMPANION,J190,W/DAMPENER PKGE" | 1610-MT643 SPRING SUSPENSION OR REYCO COMPANION FLANGE CSFE, TCFE |
| 3A | 4303004 | | END YOKE,AXLE,J230SB | 1610, MT643 WITH NEWAY SUSPENSION OR MANUAL TRANS CSFE, TCFE |
| 3A | 4281036 | | END YOKE ASSY,J190S,TC2000" | 1480 AT545 STANDARD CSRE, TCRE |
| 3A | 4303004 | | END YOKE,AXLE,J230SB | 1610-MT643 CSRE, TCRE |
| 3A | 0007261 | | END YOKE ASSEMBLY,1710 | 1710-MT647 CSRE, TCRE |
| 4 | 4304655 | | SEAL,OIL,PINION,J190S/230,HALF ROUND | |
| *5 | 4281051 | | CONE,PINION BEARING,INNER & OUTER,J190S" | |
| *6 | 4281077 | | CUP,PINION BEARING,INNER & OUTER,J190S" | |
| 7 | 2153625 | 6 | BOLT,CAGE,PINION BEARING,F170S | |
| 8 | 4281010 | | CAGE ASSY,BEARING,W/CUPS,J190S,TC2000" | |
| 9 | 4281093 | | SHIM,PINION BEARING CAGE,.005,J190S, | |
| 9 | 4281101 | | SHIM,PINION BEARING CAGE,.010,J190S, | |
| 9 | 4281119 | | SHIM,PINION BEARING CAGE,.030,J190S, | |
| 10 | 4281127 | | KIT,SPACER,PINION BEARING,J190S,TC2000" | |
| NI | 4281366 | | CARRIER ASSY,4.44 RATIO,J190S/210S,RE | |
| NI | 4281374 | | CARRIER ASSY,4.78 RATIO,J190S,TC2000 | |
| NI | 4301065 | | CARRIER ASSY,J190S,4.44 RATIO, TCRE | |
| NI | 4301073 | | CARRIER ASSY,J190S,4.78 RATIO, TCRE | |
| NI | 4311189 | | CARRIER ASSY. 7.17 RATIO TCRE 427 | |
| NI | 4311213 | | CARRIER ASSY, 7.17 RATIO, DANA H047CA107 | |
| 11 | 4281135 | | RING GEAR & PINION SET,4.44 RATIO,J190S TC | |
| 11 | 4281143 | | RING GEAR & PINION SET,4.78 RATIO,J190S | |
| 11 | 4311197 | | RING GEAR & PINION SET 7.17 TCRE 427 | |
| 11 | 4311221 | | RING GEAR & PINION,7.17 RATIO,J190,TCFE | |
| *1 | 4281150 | | BEARING,PILOT,PINION,J190S,TC2000" | |
| 13 | 4281168 | | CARRIER & CAP ASSY,J190S,TC2000" | INCLUDES ITEMS 28 AND 29 |

Models: A3FE, A3RE, CSFE, CSRE, QBRE, TCFE, TCRE
SPICER
J190
To CSN 30046775 FE CSN 10096695 RE 11/04/01

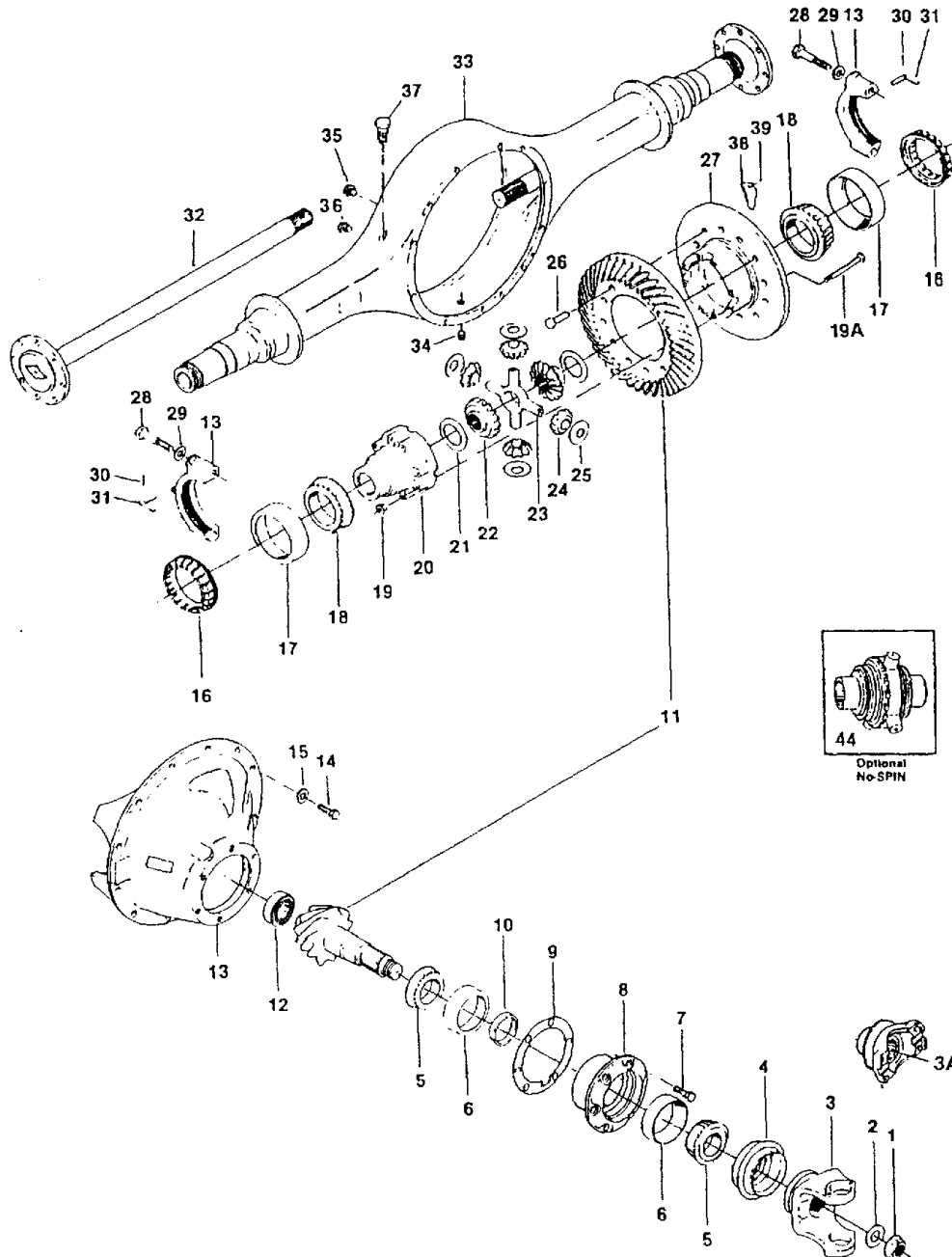
| Key | PartNumber | Qty | Description | Comment |
|-----|------------|-----|--|----------------------------------|
| 14 | 4281176 | 12 | BOLT,CARRIER MOUNTING,J190S,TC2000 | |
| 15 | 2001220 | 12 | LOCKWASHER,SPLIT RING, 5/8 ,LHT,YEL ZN | |
| 16 | 4281184 | 2 | RING,BEARING ADJUSTING,DIFF,J190S,TC2000 | |
| 17 | 4281192 | 2 | CUP,DIFFERENTIAL BEARING,J190S,TC2000 | |
| 18 | 4281200 | 2 | CONE,DIFFERENTIAL BEARING,J190S,TC2000 | |
| 19 | 2161909 | 8 | NUT,LOCK,F170S | |
| 19 | 4281226 | 8 | BOLT,DIFF CASE,4.44 RATIO,J190S,TC2000 | |
| 19 | 4281234 | 8 | BOLT,DIFF CASE,4.78 RATIO,J190S,TC2000 | |
| NI | 4290789 | | KIT,DIFF BEARING & SEAL,J190S,TC" | <i>INCLUDES ITEMS WITH *</i> |
| 20 | 4281242 | | CASE,DIFF SUPPORT,CAP HALF,J190S,TC2000 | |
| 21 | 4281259 | | KIT,DIFF,J190S,TC2000 | <i>INCLUDES ITEMS 22 THRU 25</i> |
| 22 | | | NOT SERVICED SEPARATELY | <i>PART OF ITEM 21</i> |
| 23 | | | NOT SERVICED SEPARATELY | <i>PART OF ITEM 21</i> |
| 24 | | | NOT SERVICED SEPARATELY | <i>PART OF ITEM 21</i> |
| 25 | | | NOT SERVICED SEPARATELY | <i>PART OF ITEM 21</i> |
| 26 | 8300543 | | KIT,BOLT,RING & PINION,J230 AXLE" | |
| 27 | 4281275 | | CASE,DIFF SUPPORT,FLANGE HALF,4.44,J190S | |
| 27 | 4281283 | | CASE,DIFF SUPPORT,FLANGE HALF,4.78,J190S | |
| 28 | 4281291 | 4 | BOLT,CAP,DIFF BEARING,J190S,TC2000 | |
| 29 | 2161339 | 4 | WASHER,FLAT,I-108 3/4 X 3/16 X 1 1/2 OD | |
| 30 | 2153864 | 2 | PIN,COTTER,3/16 X 1 | |
| 31 | 4281317 | 2 | LOCK RING,ADJUSTING,J190S,TC2000 | |
| 32 | 4281325 | | SHAFT,AXLE,J190S,TC2000 | |
| 33 | 4281333 | | HOUSING,AXLE,J190,TC2000 | |
| 33 | 4301107 | | HOUSING, AXLE, REAR J190S TCRE" | |
| 34 | 2153856 | | PLUG,DRAIN,F-170-S | |
| 35 | 2153849 | | PLUG,FILL,F-170-S | |
| 36 | | | NOT APPLICABLE | |
| 37 | 2154060 | | PLUG,VENT | |
| 38 | | | NOT APPLICABLE | |
| 39 | | | NOT APPLICABLE | |

Models: A3FE, A3RE, CSFE, CSRE, QBRE, TCFE, TCRE
 SPICER
 J210
 To CSN 30046775 FE CSN 10096695 RE 11/04/01

| Key | PartNumber | Qty | Description | Comment |
|-----|------------|-----|-------------|---------|
|-----|------------|-----|-------------|---------|

| | | | | |
|-----|----|-----|---------|---|
| DR | BY | FRT | 4301305 | A |
| APP | BY | REV | | |

© 1991 BLUE BIRD BODY COMPANY. ALL RIGHTS RESERVED.



Models: A3FE, A3RE, CSFE, CSRE, QBRE, TCFE, TCRE
 SPICER
 J210
 To CSN 30046775 FE CSN 10096695 RE 11/04/01

| Key | PartNumber | Qty | Description | Comment |
|-----|------------|-----|--|--|
| 1 | 4281218 | | NUT,PINION,J190S,TC2000 | |
| 2 | 4281028 | | WASHER,PINION NUT,J190S,TC2000 | |
| 3 | 4281036 | | END YOKE ASSY,J190S,TC2000" | 1480-AT545 STANDARD CSFE, TCFE |
| 3 | 4304531 | | FLANGE,COMPANION,J190,W/DAMPENER PKGE" | 1610-MT643 WITH SPRING SUSPENSION OR REYCO COMPANION FLANGE CSFE, TCFE |
| 3 | 4303004 | | END YOKE,AXLE,J230SB | 1610, MT643 WITH NEWAY SUSPENSION OR MANUAL TRANS |
| 3 | 4281036 | | END YOKE ASSY,J190S,TC2000" | 1480-AT545 STANDARD CSRE, TCRE |
| 3 | 4303004 | | END YOKE,AXLE,J230SB | 1610-MT643 |
| 3 | 0007261 | | END YOKE ASSEMBLY,1710 | 1710-MT647 |
| 4 | 4304655 | | SEAL,OIL,PINION,J190S/230,HALF ROUND | STD & OPT 4491, 4494, 4513, 4514 |
| 5* | 4281051 | | CONE,PINION BEARING,INNER & OUTER,J190S" | |
| 6* | 4281077 | | CUP,PINION BEARING,INNER & OUTER,J190S" | |
| 7 | 4301099 | 6 | BOLT,PINION BEARING CAGE,J190S,TCRE | |
| 8 | 4281010 | | CAGE ASSY,BEARING,W/CUPS,J190S,TC2000" | |
| 9 | 4281093 | | SHIM,PINION BEARING CAGE,.005,J190S, | |
| 9 | 4281101 | | SHIM,PINION BEARING CAGE,.010,J190S, | |
| 9 | 4281119 | | SHIM,PINION BEARING CAGE,.030,J190S, | |
| 10 | 4281127 | | KIT,SPACER,PINION BEARING,J190S,TC2000" | |
| 11 | 4301180 | | RING GEAR & PINION,J210/J230,4.10 | |
| 11 | 4281135 | | RING GEAR & PINION SET,4.44 RATIO,J190S TC | |
| 11 | 4281143 | | RING GEAR & PINION SET,4.78 RATIO,J190S | |
| 11 | 4304713 | | RING GEAR & PINION,MATCHED SET,J210 7.17 | |
| 12 | 4281150 | | BEARING,PILOT,PINION,J190S,TC2000" | |
| 13 | 4281168 | | CARRIER & CAP ASSY,J190S,TC2000" | INCLUDES ITEMS 28 & 29 |
| NI | 4304721 | | CARRIER ASSY,J210S,4.10 RATIO | |
| NI | 4307252 | | CARRIER ASSY,J210S,4.10 RATIO,QB/TCRE | |
| NI | 4304739 | | CARRIER ASSY,J210NS,4.10 RATIO | NO SPIN |
| NI | 4304754 | | CARRIER ASSY,J210S,4.44 RATIO | |
| NI | 4301065 | | CARRIER ASSY,J190S,4.44 RATIO, TCRE | |
| NI | 4304762 | | CARRIER ASSY,J210NS,4.44 | NO SPIN |
| NI | 4304812 | | CARRIER ASSY,J210S,4.78 RATIO | |
| NI | 4301073 | | CARRIER ASSY,J190S,4.78 RATIO, TCRE | |

Models: A3FE, A3RE, CSFE, CSRE, QBRE, TCFE, TCRE
SPICER
J210
To CSN 30046775 FE CSN 10096695 RE 11/04/01

| Key | PartNumber | Qty | Description | Comment |
|-----|------------|-----|--|---------------------------|
| NI | 4304820 | | CARRIER ASSY,J210NS,4.78 | NO SPIN |
| NI | 4304838 | | CARRIER ASSY,J210S,7.17 | |
| 14 | 4281176 | | BOLT,CARRIER MOUNTING,J190S,TC2000 | |
| 15 | 2001220 | | LOCKWASHER,SPLIT RING, 5/8 ,LHT,YEL ZN | |
| 16 | 4281184 | 2 | RING,BEARING ADJUSTING,DIFF,J190S,TC2000 | |
| 17 | 4281192 | 2 | CUP,DIFFERENTIAL BEARING,J190S,TC2000 | |
| 18 | 4281200 | 2 | CONE,DIFFERENTIAL BEARING,J190S,TC2000 | |
| 19 | 2161909 | 8 | NUT,LOCK,F170S | |
| 19 | 4281226 | 8 | BOLT,DIFF CASE,4.44 RATIO,J190S,TC2000 | |
| 19 | 4281234 | 8 | BOLT,DIFF CASE,4.78 RATIO,J190S,TC2000 | |
| NI | 4290789 | | KIT,DIFF BEARING & SEAL,J190S,TC" | INCLUDES ITEMS WITH * |
| 20 | 4281242 | | CASE,DIFF SUPPORT,CAP HALF,J190S,TC2000 | |
| 21 | 4281259 | | KIT,DIFF,J190S,TC2000 | INCLUDES ITEMS 22 THRU 25 |
| 22 | | | NOT SERVICED SEPARATELY | PART OF ITEM 21 |
| 23 | | | NOT SERVICED SEPARATELY | PART OF ITEM 21 |
| 24 | | | NOT SERVICED SEPARATELY | PART OF ITEM 21 |
| 25 | | | NOT SERVICED SEPARATELY | PART OF ITEM 21 |
| 26 | 8300543 | | KIT,BOLT,RING & PINION,J230 AXLE" | |
| 27 | 4281275 | | CASE,DIFF SUPPORT,FLANGE HALF,4.44,J190S | |
| 27 | 4281283 | | CASE,DIFF SUPPORT,FLANGE HALF,4.78,J190S | |
| 28 | 4281291 | 4 | BOLT,CAP,DIFF BEARING,J190S,TC2000 | |
| 29 | 2161339 | 4 | WASHER,FLAT,I-108 3/4 X 3/16 X 1 1/2 OD | |
| 30 | 2153864 | 2 | PIN,COTTER,3/16 X 1 | |
| 31 | 4281317 | 4 | LOCK RING,ADJUSTING,J190S,TC2000 | |
| 32 | 4281325 | | SHAFT,AXLE,J190S,TC2000 | |
| 33 | 4307245 | | AXLE HOUSING,J210,SPRING SUSPENSION | |
| 33 | 4320594 | | AXLE HOUSING ASSY REAR (J210) | |
| 34 | 2153856 | | PLUG,DRAIN,F-170-S | |
| 35 | 2153849 | | PLUG,FILL,F-170-S | |
| 36 | | | NOT APPLICABLE | |
| 37 | 2154060 | | PLUG,VENT | |
| 38 | | | NOT APPLICABLE | |
| 39 | | | NOT APPLICABLE | |

NO SPIN ONLY

Models: A3FE, A3RE, CSFE, CSRE, QBRE, TCFE, TCRE
SPICER
J210
To CSN 30046775 FE CSN 10096695 RE 11/04/01

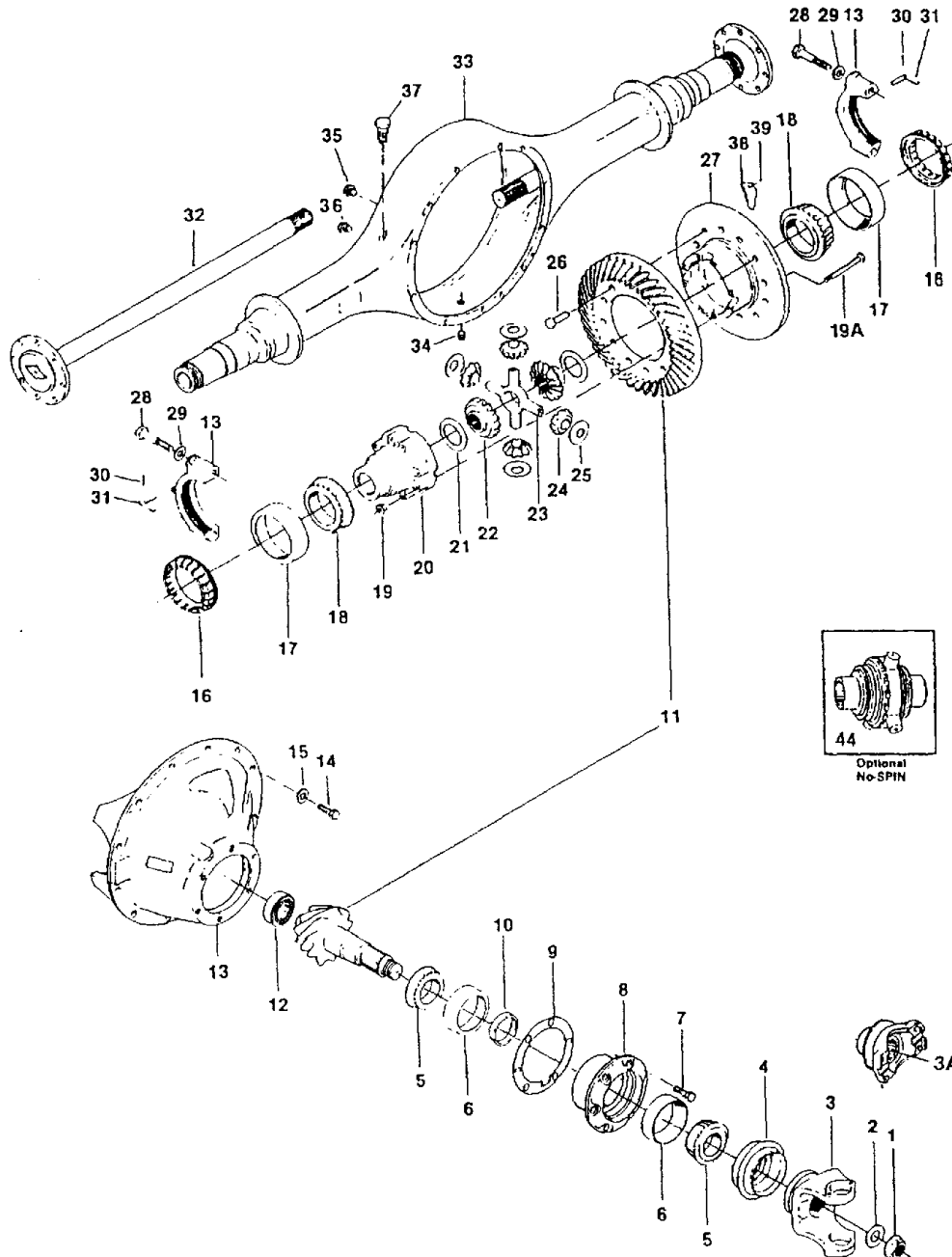
| Key | PartNumber | Qty | Description | Comment |
|-----|------------|-----|-------------------------------------|---------|
| 44 | 4304473 | | DIFFERENTIAL ASSY NO SPIN 579365C91 | |

Models: **AAFE, AARE, A3FE, A3RE, CSFE, CSRE, QBRE, TCFE, TCRE**
SPICER
J230
To CSN 30046775 FE CSN 10096695 RE 11/04/01

| Key | PartNumber | Qty | Description | Comment |
|-----|------------|-----|-------------|---------|
|-----|------------|-----|-------------|---------|

| | | | | | |
|-----|----|-----|---------|-----|---|
| DR | BY | FRT | 4301305 | REV | A |
| APP | BY | | | | |

© 1991 BLUE BIRD BODY COMPANY. ALL RIGHTS RESERVED.



Models: AAFE, AARE, A3FE, A3RE, CSFE, CSRE, QBRE, TCFE, TCRE
SPICER
J230
To CSN 30046775 FE CSN 10096695 RE 11/04/01

| Key | PartNumber | Qty | Description | Comment |
|-----|------------|-----|--|---|
| 1 | 4281218 | | NUT,PINION,J190S,TC2000 | |
| 2 | 4281028 | | WASHER,PINION NUT,J190S,TC2000 | |
| 3A | 4281036 | | END YOKE ASSY,J190S,TC2000" | 1480-AT545 STANDARD CSFE, TCFE |
| 3A | 4304531 | | FLANGE,COMPANION,J190,W/DAMPENER PKGE" | 1610 - MT643-SPRING SUSPENSION OR REYCO COMPANION FLANGE CSFE, TCFE |
| 3A | 4303004 | | END YOKE,AXLE,J230SB | 1610, MT643 WITH NEWAY SUSPENSION OR MANUAL TRANS CSFE, TCFE |
| 3A | 0079254 | | YOKE,REAR AXLE,J230,1610" | 1610 - MD3060, SPRING SUSPENSION CSFE, TCFE |
| 3A | 4281036 | | END YOKE ASSY,J190S,TC2000" | 1480-AT545 STANDARD CSRE, TCRE |
| 3A | 4303004 | | END YOKE,AXLE,J230SB | 1610-MT543 |
| 3A | 0007261 | | END YOKE ASSEMBLY,1710 | 1710-MT647 |
| 4* | 4281044 | | SEAL,PINION OIL,J190S,TC2000" | |
| 5* | 4281051 | | CONE,PINION BEARING,INNER & OUTER,J190S" | |
| 6* | 2624427 | | CUP | |
| 7 | 4301099 | | BOLT,PINION BEARING CAGE,J190S,TCRE | |
| 8 | 4281010 | | CAGE ASSY,BEARING,W/CUPS,J190S,TC2000" | |
| 9 | 4281093 | | SHIM,PINION BEARING CAGE,.005,J190S, | |
| 9 | 4281101 | | SHIM,PINION BEARING CAGE,.010,J190S, | |
| 9 | 4281119 | | SHIM,PINION BEARING CAGE,.030,J190S, | |
| 10 | 4281127 | | KIT,SPACER,PINION BEARING,J190S,TC2000" | |
| 11 | 4311288 | | KIT,RING GEAR & PINION SET,4.10 TCFE | AAFE, AARE, CSFE, CSRE, QBRE, TCFE, TCRE |
| 11 | 4281135 | | RING GEAR & PINION SET,4.44 RATIO,J190S TC | AAFE, AARE, CSFE, CSRE, QBRE, TCFE, TCRE |
| 11 | 4281143 | | RING GEAR & PINION SET,4.78 RATIO,J190S | AAFE, AARE, CSFE, CSRE, QBRE, TCFE, TCRE |
| 11 | 4301198 | | RING GEAR & PINION,5.38,J190/230 | AAFE, AARE, CSFE, CSRE, QBRE, TCFE, TCRE |
| 11 | 4311197 | | RING GEAR & PINION SET 7.17 TCRE 427 | AAFE, AARE, CSFE, CSRE, QBRE, TCFE, TCRE |
| 12 | 4281150 | | BEARING,PILOT,PINION,J190S,TC2000" | |
| 13 | 4281168 | | CARRIER & CAP ASSY,J190S,TC2000" | INCLUDES ITEMS 28 AND 29 |
| | 4303038 | | CARRIER ASSY,4.10 RATIO,J230SB | AAFE,CSFE,TCFE J230 SB ONLY |
| | 4302998 | | CARRIER ASSY,4.44 RATIO,J230SB,AAFC/TCFC | AAFE,CSFE,TCFE J230 SB ONLY |
| | 4303029 | | CARRIER ASSY | AAFE,CSFE,TCFE J230 SB ONLY |

Models: **AAFE, AARE, A3FE, A3RE, CSFE, CSRE, QBRE, TCFE, TCRE**
SPICER
J230
To CSN 30046775 FE CSN 10096695 RE 11/04/01

| Key | PartNumber | Qty | Description | Comment |
|-----|------------|-----|---|-------------------------------------|
| | 4301131 | | CARRIER ASSY,J230SB 5.38 RATIO" | |
| | 4311213 | | CARRIER ASSY, 7.17 RATIO, DANA H047CA107 | AAFE,CSFE,TCFE J230 SB ONLY |
| | 4303087 | | CARRIER ASSY,4.10 RATIO J230SB AARE/TCRE | AARE, CSRE, QBRE,TCRE J230 SB ONLY |
| | 4303095 | | CARRIER ASSY,4.44 RATIO J230SB AARE/TCRE | AARE, CSRE, QBRE,TCRE J230 SB ONLY |
| | 4303103 | | CARRIER ASSY,4.78 RATIO J230SB AARE/TCRE | AARE, CSRE, QBRE,TCRE J230 SB ONLY |
| | 4301214 | | CARRIER ASSY,J230SB 5.38 RATIO,AARE/TCRE | AARE, CSRE, QBRE,TCRE J230 SB ONLY |
| | 4311189 | | CARRIER ASSY. 7.17 RATIO TCRE 427 | AARE, CSRE, QBRE,TCRE J230 SB ONLY |
| | 4301164 | | CARRIER ASSY. 7.17 RATIO TCRE 427 | J230 NSB - NO SPIN AAFE, CSFE, TCFE |
| | 4303046 | | CARRIER ASSY,4.44 RATIO,J230NSB, | J230 NSB - NO SPIN AAFE, CSFE, TCFE |
| | 4303053 | | CARRIER ASSY,4.78 RATIO,J230NSB,AAFC/TCFC | J230 NSB - NO SPIN AAFE, CSFE, TCFE |
| | 4301206 | | CARRIER ASSY,J230NSB 5.38 NO-SPIN | J230 NSB - NO SPIN AAFE, CSFE, TCFE |
| 14 | 4281176 | 12 | BOLT,CARRIER MOUNTING,J190S,TC2000 | |
| 15 | 2001220 | 12 | LOCKWASHER,SPLIT RING, 5/8 ,LHT,YEL ZN | |
| 16 | 4281184 | 2 | RING,BEARING ADJUSTING,DIFF,J190S,TC2000 | |
| 17 | 4281192 | 2 | CUP,DIFFERENTIAL BEARING,J190S,TC2000 | |
| 18 | 4281200 | 2 | CONE,DIFFERENTIAL BEARING,J190S,TC2000 | |
| 19 | 2161909 | 8 | NUT,LOCK,F170S | |
| 19 | 4301297 | | BOLT, DIFF. CASE 5.38 J230 NSB" | |
| 19 | 4281234 | | BOLT,DIFF CASE,4.78 RATIO,J190S,TC2000 | |
| NI | 4290789 | | KIT,DIFF BEARING & SEAL,J190S,TC" | INCLUDES ITEMS WITH * |
| 20 | 4281242 | | CASE,DIFF SUPPORT,CAP HALF,J190S,TC2000 | |
| 21 | 4301123 | | KIT,DIFF. J230SB | INCLUDES ITEM 22 THRU 25 |
| 21 | 4301271 | | DIFF. ASSY, NO-SPIN 4:10/5.38 J230 NSB | SEE ITEM #40 |
| 22 | | | J230SB, SEE ITEM #21 | |
| 22 | | | J230NSB, SEE ITEM #40 | |
| 23 | | | J230SB, SEE ITEM #21 | |
| 23 | | | J230NSB, SEE ITEM #40 | |
| 24 | | | J230SB, SEE ITEM #21 | |
| 24 | | | J230NSB, SEE ITEM #40 | |
| 25 | | | J230SB, SEE ITEM #21 | |

Models: **AAFE, AARE, A3FE, A3RE, CSFE, CSRE, QBRE, TCFE, TCRE**
SPICER
J230
To CSN 30046775 FE CSN 10096695 RE 11/04/01

| Key | PartNumber | Qty | Description | Comment |
|-----|------------|-----|--|--------------------------|
| 25 | | | J230NSB, SEE ITEM #40 | |
| 26 | 8300543 | | KIT,BOLT,RING & PINION,J230 AXLE" | |
| 27 | 4281275 | | CASE,DIFF SUPPORT,FLANGE HALF,4.44,J190S | |
| 27 | 4281283 | | CASE,DIFF SUPPORT,FLANGE HALF,4.78,J190S | |
| 28 | 4281291 | 4 | BOLT,CAP,DIFF BEARING,J190S,TC2000 | |
| 29 | 2161339 | 4 | WASHER,FLAT,I-108 3/4 X 3/16 X 1 1/2 OD | |
| 30 | 2153864 | 2 | PIN,COTTER,3/16 X 1 | |
| 31 | 4281317 | 2 | LOCK RING,ADJUSTING,J190S,TC2000 | |
| 32 | 4301156 | | AXLE SHAFT,J230SB" | STANDARD |
| 32 | 1532530 | | AXLE SHAFT,5/8 TAPERED HOLES,J230SB | OPTION 5356-01,-02, 4225 |
| 33 | 4301248 | | AXLE HOUSING,J230-SB" | |
| 33 | 4301222 | | HOUSING,AXLE J230SB,5.38 RATIO | |
| 34 | 2153856 | | PLUG,DRAIN,F-170-S | |
| 35 | 2153849 | | PLUG,FILL,F-170-S | |
| 36 | | | N/A | |
| 37 | 2154060 | | PLUG,VENT | |
| 38 | | | N/A | |
| 39 | | | N/A | |
| 38. | 4303095 | | CARRIER ASSY,4.44 RATIO J230SB AARE/TCRE | |
| 40 | 4301271 | | DIFF. ASSY, NO-SPIN 4:10/5.38 J230 NSB | |
| NI | 4301172 | | KIT,DIFF,NO-SPIN J230NSB | INCLUDES 19, 19A, 20, 27 |
| NI | 4301289 | | KIT, DIFF. NO-SPIN J230 NSB 5.38 RATIO | INCLUDES 19, 19A, 20, 27 |