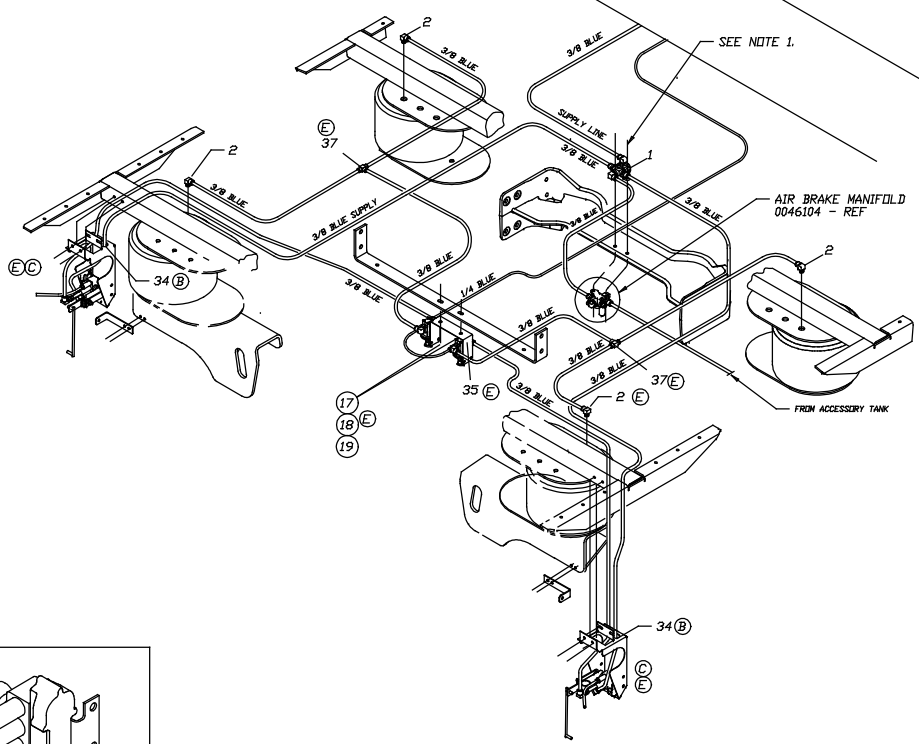


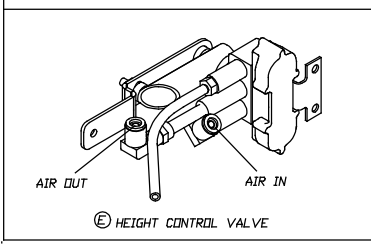
DETAIL: A FRONT LEVELING VALVE  
SCALE: 1/4"



KEY PART-NO -----DESCRIPTION-----QTY-

1	0050503	MANIFOLD ASSY,REAR AIR SUSP	HARE	1
2	0009914	EL.BOW,90 DEG,MALE,186X6-Z,25MPT X .38T		4
3	0009926	TEE,MALE,BRANCH,186X6-Z,25MPT X .38T		2
4	0046632	MANIFOLD ASSY,FRONT AIR SUSPENSION	HARE	1
5	0009987	TEE,UNION,186X4,25T		1
6	0009239	HOSE AIR GOV,STAINLESS,21,1/4\"/>		

- NOTES:
- ITEM #1 WILL BE FASTENED USING THE EXISTING FASTENERS OF THE REAR AIR BRAKE MANIFOLD ASSEMBLY, MOUNTED TO RR UPPER TORQUE ROD MTG CROSSMEMBER.
  - ITEM #28 IS SHOWN IN AN UNINSTALLED POSITION FOR CLARITY.
  - REFER TO AIR BRAKE DIAGRAM (0045897) FOR AIR SUPPLY DETAILS.
  - REFER TO FRONT & REAR SUSPENSION DIAGRAMS (0056945 & 0047015) FOR RIDE HEIGHT INFO.
  - 3/8\"/>



HEIGHT CONTROL VALVE

**CONFIDENTIAL**  
The information herein is confidential business information and may not be copied or used for any purpose unless permission is expressly granted in writing by Blue Bird Body Company.  
Copyright 1999  
Blue Bird Body Company  
All rights reserved

REV	CHANGED LEVEL VALVE ASSY,ADJUSTED DUMP VALVES	REV	EJ	18099		
	REPLACED ITEM 14	REV	EJ	18099		
	UPDATED BRACKET VIEW & MTD DIMS	REV	RF	18079		
	ADDED EDGE TRIM FOR SLOT IN BRKT & NOTE 5	REV	RF	18002		
	NEW REAR VALVE/SLIGHTEN & SUSPENSION BRACKET	REV	RF	18002		
DATE	REV	REVISED	DR	APP	CON	
COMP	BLUE BIRD CORPORATION				SCALE	
1995Z	PERT VALLEY, GEORGIA, USA				1/2	
DIAGRAM,INSTL,FRONT & RR SUSP PLUMBING						
38 HARE						
DR	05/12/03	BY	RF		PAGE	
APP	05/12/03	BY	RF	D	0066290	OF