

Combination	Single/Piggyback
<p style="text-align: right; font-size: small;">VMRS# 13-004</p>	N/A
	Piggyback Plus Kit
	<p style="text-align: right; font-size: small;">VMRS# 13-004-001</p>

Additional sizes on page 52.

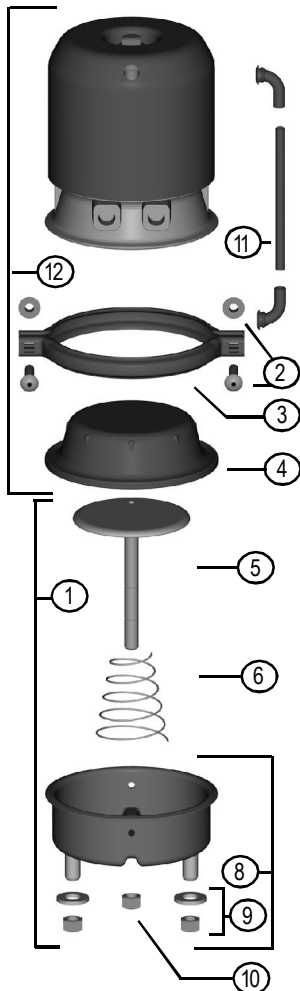
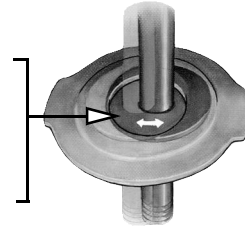
P/N Series	MJS2424ET	MJS3024ET	MJS3028ET	MJS3030ET
Model	MJS2424ET	MJS3024ET	MJS3028ET	MJS3030ET
Size	2424	3024	3028	3030
Stroke	3.00"	3.00"	3.00"	3.00"
P/N Combination	MJS2424ET051	MJS3024ET051	MJS3028ET051	MJS3030ET051
P/N Single/Piggyback	N/A	N/A	N/A	N/A
P/N Piggyback Plus Kit	MJS2424ET008	MJS3024ET008	MJS3028ET008	MJS3030ET008
Wt. Combination (Lbs.)	20.4	22.4	23.1	23.1
Wt. Single (Lbs.)	13.5	14.6	14.92	14.9
A	10.31	10.33	10.93	10.93
B	7.94	7.94	8.56	8.56
C	7.38	8.32	8.32	8.32
D	6.76	6.76	7.5	7.5
E	4.75"			
F	5/8" - 11 UNC			
G	5/8" - 18 UNF			
Inlets	3/8" - NPTF			
X - Min. (in the caged position)	8.00"			

Note: Product information and specifications subject to change without notice.

Magnum Performance Plus Model Features

- Tamper Resistant Design
- Lighter Weight
- 3 Inch Long Stroke
- Compact Size
- New Patented Integral Release Bolt Mechanism - Minimal Bolt Protrusion (Approx. 1.25 inch protrusion on “Long Stroke” models when manually released)
- Lower Hold-Off Pressure (Less Air Consumption)
- Non-Coil Clash Power Spring
- Increased Corrosion Resistance - Steel Head Double-Coated with Black Zinc Iron Chromate and Epoxy
- Available with 1,922-2,600 Lbs. of Push-Rod Braking Force @ 1.25 inch Stroke / Service Brake Sizes 24-36

⑦ **Center Hole Shield**
Permits visual inspection of stroke alert but prevents entry of contaminants.



Replacement Parts

P/N Series	MJS2424ET	MJS3024ET	MJS3028ET	MJS3030ET
Model	MJS2424ET	MJS3024ET	MJS3028ET	MJS3030ET
1 Kit - NP Chamber (a)	9015215	9015218	9015218	9015218
2 Kit - Nuts & Bolts	9003001	9003001	9003001	9003001
3 Clamp Band Assembly	8216025	8216045	8216045	8216045
4 Diaphragm	8017424	8017830	8017830	8017830
5 Kit - Push-Rod Assembly (a)	9064006	9064008	9064008	9064008
6 Return Spring	8068022	8068022	8068022	8068022
7 Kit - Center Hole Shield	9065002	9065002	9065002	9065002
8 NP Chamber Assembly	9015213	9015216	9015216	9015216
9 Kit - Nuts & Washers	9002001	9002001	9002001	9002001
10 Hex Nut - Yoke	8130004	8130004	8130004	8130004
11 Kit - Breather Tube	9081001	9081001	9081001	9081001
12 Kit - Piggyback Plus	MJS2424ET008	MJS3024ET008	MJS3028ET008	MJS3030ET008
OPTIONAL ITEMS				
Yoke Assembly	Refer to Replacement Parts Section 7			
Boot & Retainer	Refer to Replacement Parts Section 7			

Note: (a) To ensure correct stroke alert positioning, these kits must be used only on the designated MGM Brake units.

For additional replacement parts, refer to Replacement Parts Section 7.

Combination	Single/Piggyback
<p style="text-align: right;">VMRS# 13-004</p>	N/A
	Piggyback Plus Kit
	<p style="text-align: right;">VMRS# 13-004-001</p>

P/N Series	MJS3628ET	MJS3630ET
Model	MJS3628ET	MJS3630ET
Size	3628	3630
Stroke	3.00"	3.00"
P/N Combination	MJS3628ET051	MJS3630ET051
P/N Single/Piggyback	N/A	N/A
P/N Piggyback Plus Kit	MJS3628ET008	MJS3630ET008
Wt. Combination (Lbs.)	24.9	25.2
Wt. Single (Lbs.)	14.5	14.5
A	11.28	11.28
B	8.56	8.56
C	9.4	9.4
D	7.5	7.5
E	4.75"	
F	5/8" - 11UNC	
G	5/8" - 18UNF	
Inlets	3/8" - NPTF	
X - Min. (in the caged position)	8.00"	

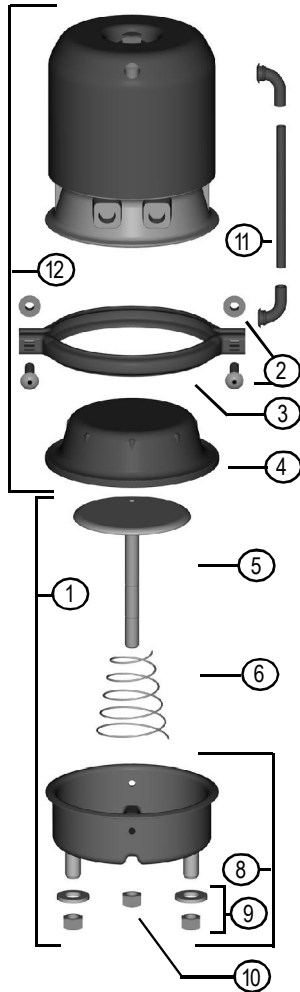
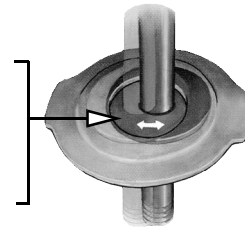
Note: Product information and specifications subject to change without notice.

3.00" Long Stroke Model

Magnum Performance Plus Model Features

- Tamper Resistant Design
- Lighter Weight
- 3 Inch Long Stroke
- Compact Size
- New Patented Integral Release Bolt Mechanism - Minimal Bolt Protrusion (Approx. 1.25 inch protrusion on "Long Stroke" models when manually released)
- Lower Hold-Off Pressure (Less Air Consumption)
- Non-Coil Clash Power Spring
- Increased Corrosion Resistance - Steel Head Double-Coated with Black Zinc Iron Chromate and Epoxy
- Available with 1,922-2,600 Lbs. of Push-Rod Braking Force @ 1.25 inch Stroke / Service Brake Sizes 24-36

- ⑦ **Center Hole Shield**
Permits visual inspection of stroke alert but prevents entry of contaminants.



Replacement Parts

	P/N Series	MJS3628ET	MJS3630ET
	Model	MJS3628ET	MJS3630ET
1	Kit - NP Chamber (a)	9015109	9015109
2	Kit - Nuts & Bolts	9003001	9003001
3	Clamp Band Assembly	8216036	8216036
4	Diaphragm	8017836	8017836
5	Kit - Push-Rod Assembly (a)	9064008	9064008
6	Return Spring	8068022	8068022
7	Kit - Center Hole Shield	9065002	9065002
8	NP Chamber Assembly	9015108	9015108
9	Kit - Nuts & Washers	9002001	9002001
10	Hex Nut - Yoke	8130004	8130004
11	Kit - Breather Tube	9081001	9081001
12	Kit - Piggyback Plus	MJS3628ET008	MJS3630ET008
OPTIONAL ITEMS			
Yoke Assembly		Refer to Replacement Parts Section 7	
Boot & Retainer		Refer to Replacement Parts Section 7	

Note: (a) To ensure correct stroke alert positioning, these kits must be used only on the designated MGM Brake units.

For additional replacement parts, refer to Replacement Parts Section 7.