

L7



- Large vacuum flows
- Small size and low weight
- Good for handling porous materials or if leakage is present
- Nitrile (NBR) seals standard

Supplied with push-in hose connector for compressed air (for pumps for connection plate A & B2). Supplied with push-in hose connector for compressed air and external flow-through silencer (for pumps for connection plate C).

Technical data

Description	Unit	Value
Feed pressure, optimum	psi	87
Feed pressure, max.	psi	101.5
Noise level	dBA	57–68
Temperature range	°F	-4–176
Weight	oz	1.16 (A), 2.19 (B2), 1.69 (C), 0.46 (Z)
Material		PA, POM, SS, NBR (Viton/EPDM), AI (B2 only), ABS (C only)

Vacuum flow

Feed pressure psi	Air consumption scfm	Vacuum flow (scfm) at different vacuum levels (-inHg)										Max vacuum -inHg
		0	3	6	9	12	15	18	21	24	27	
87	1.04	1.53	1.04	0.61	0.53	0.42	0.34	0.21	0.14	–	–	22.3

Evacuation time

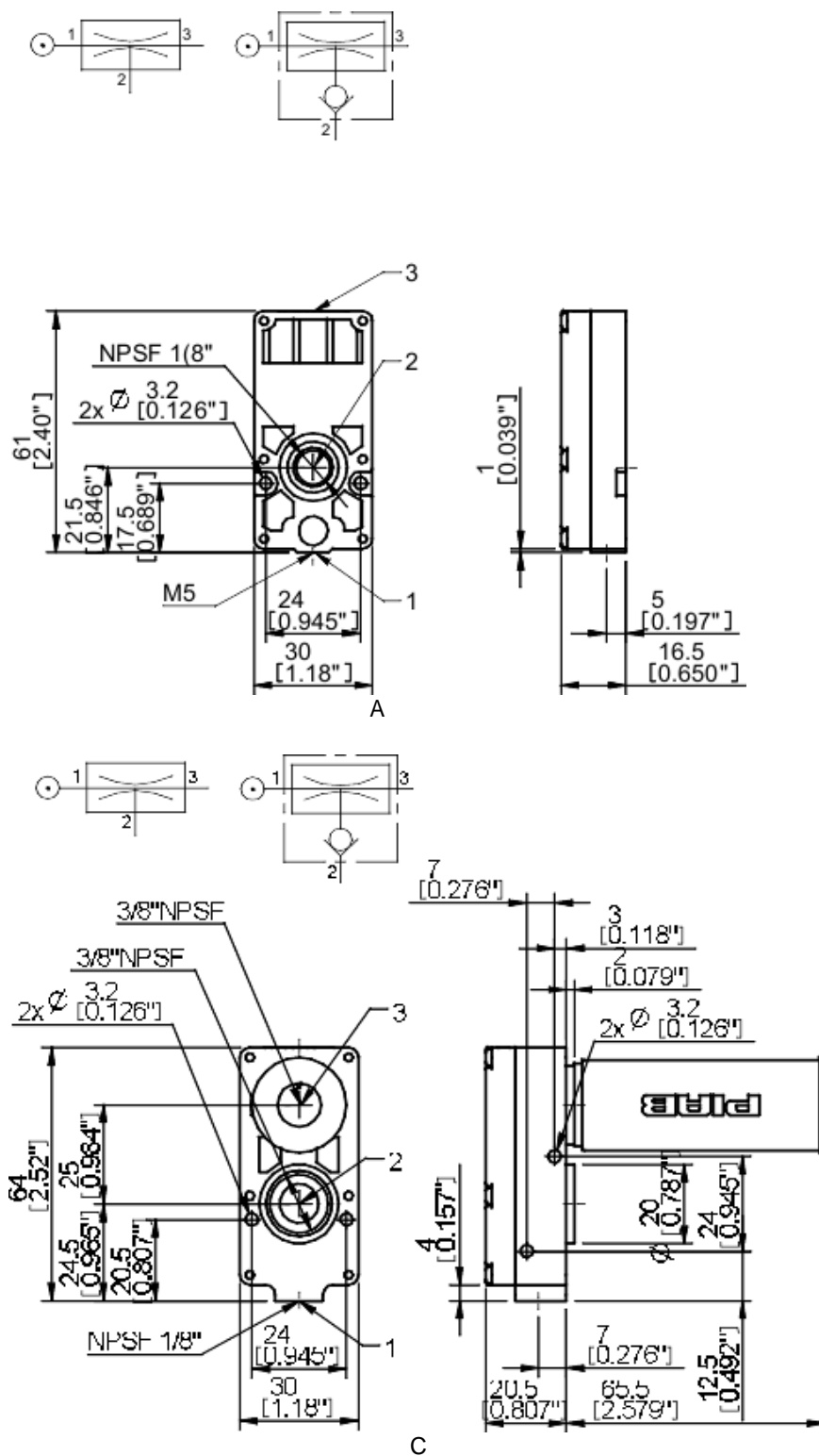
Feed pressure psi	Air consumption scfm	Evacuation time (s/cf) to reach different vacuum levels (-inHg)									Max vacuum -inHg
		3	6	9	12	15	18	21	24	27	
87	1.04	2.63	8.78	20.4	34.3	51.3	73.1	108	–	–	22.3

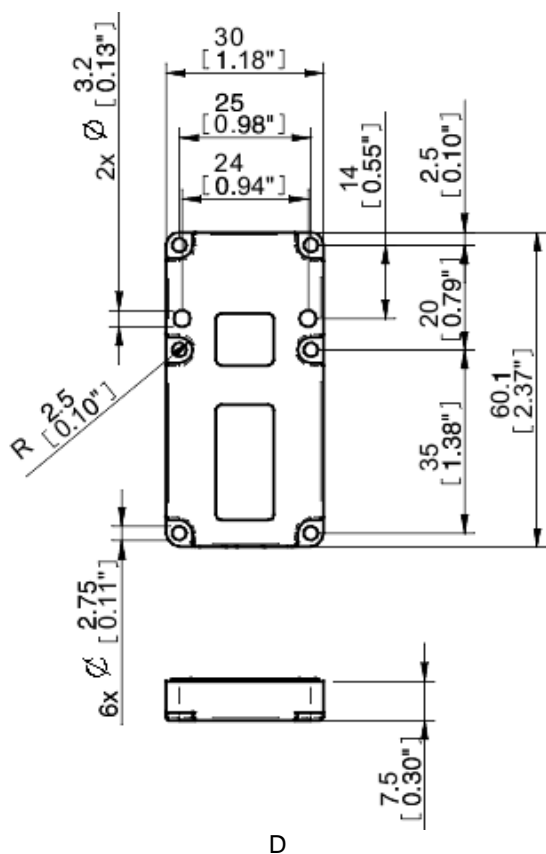
See page 28 for recommended hose dimensions for compressed air, vacuum & exhaust connections.

Ordering information

	Description	Part No.
A	Vacuum pump MINI L7, conn. A, NBR seals	L7A6-AN
C	Vacuum pump MINI L7, conn. C, NBR seals	L7A6-CN
C	Vacuum pump MINI L7, conn. C, NBR seals, non-return valve	L7A6-CNA
D	Vacuum pump MINI L7, conn. Z, NBR seals	L7A6-ZN
D	Vacuum pump MINI L7, conn. Z NBR seals, non-return valve	L7A6-ZNA

Viton® or EPDM seals optional (i.e. Part No. L7A6-AV or L7A6-AE)





Ordering information, accessories

Description	Part No.
Seal kit MINI 5-28, NBR	32.01.097
Seal kit MINI 5-28, Viton®	32.01.097V
Seal kit MINI 5-28, EPDM	32.01.097E

Seal kits include flap valves, gaskets and compressed-air filters.