

X20L



- Extra vacuum level to 27.9 -inHg
- Small size and low weight
- Use in tightly sealed or non-porous applications

Supplied with push-in hose connector for compressed air (for pumps with connection plate B2). Supplied with push-in hose connector for compressed air and external flow-through silencer (for pumps with connection plate C & T).

Technical data

Description	Unit	Value
Feed pressure, optimum	psi	58
Feed pressure, max.	psi	101.5
Noise level	dBA	62–66
Temperature range	°F	-4-176
Weight	oz	2.68 (B2), 2.12 (C), 8.40 (T)
Material		PA, POM, SS, NBR (Viton/EPDM), AI (B2 only), ABS (C only)

Vacuum flow

Feed pressure psi	Air consumption scfm	Vacuum flow (scfm) at different vacuum levels (-inHg)										Max vacuum -inHg
		0	3	6	9	12	15	18	21	24	27	
58	3.39	4.03	2.12	1.06	0.93	0.81	0.64	0.53	0.36	0.21	0.04	27.4

Evacuation time

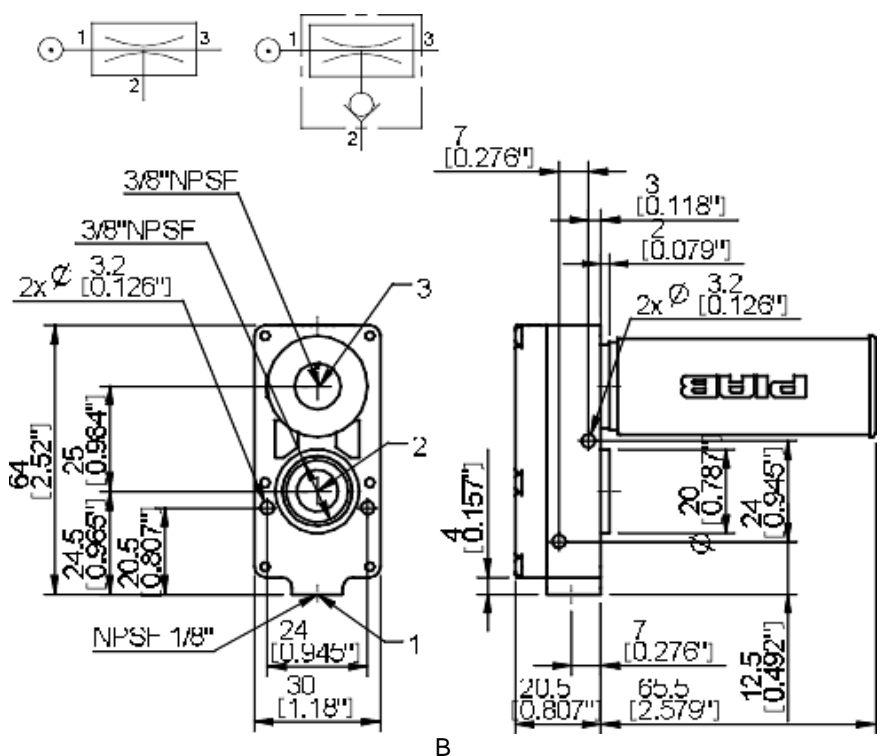
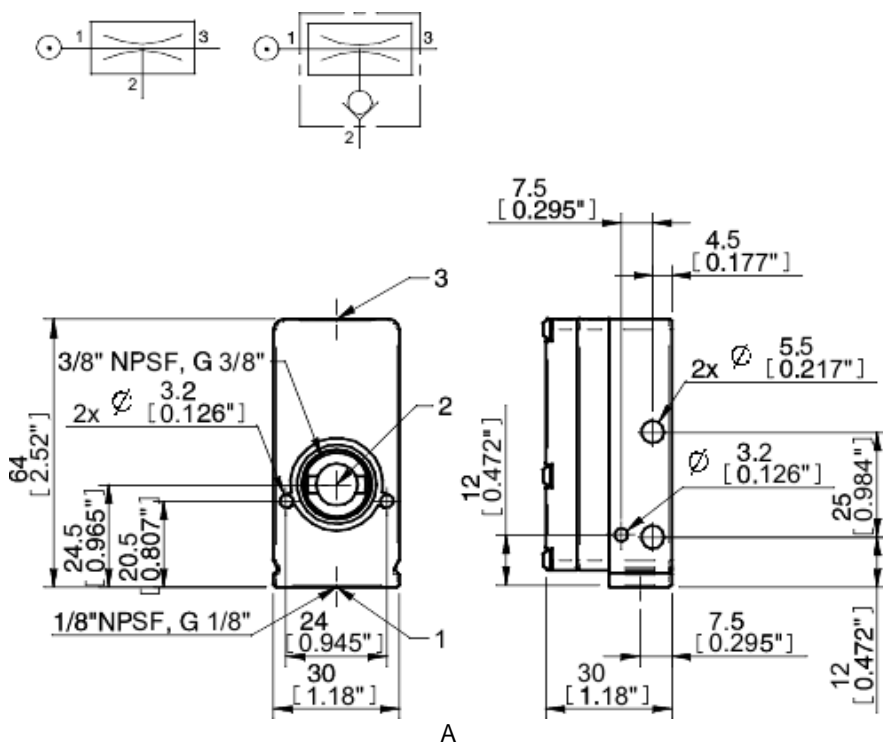
Feed pressure psi	Air consumption scfm	Evacuation time (s/cf) to reach different vacuum levels (-inHg)									Max vacuum -inHg
		3	6	9	12	15	18	21	24	27	
58	3.39	1.56	5.67	11.3	18.4	27.5	39.7	53.8	76.5	144	27.4

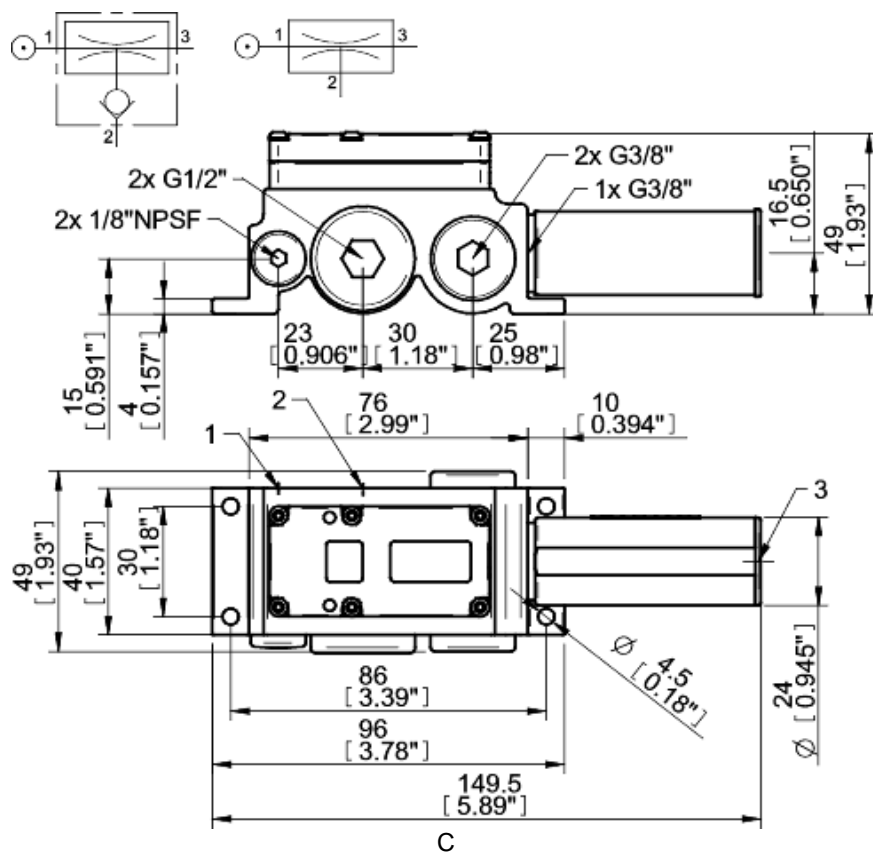
See page 28 for recommended hose dimensions for compressed air, vacuum & exhaust connections.

Ordering information

	Description	Part No.
A	Vacuum pump MINI X20L, conn. B2, NBR seals	X20A5-B2N
B	Vacuum pump MINI X20L, conn. C, NBR seals	X20A5-CN
B	Vacuum pump MINI X20L, conn. C, NBR seals, non-return valve	X20A5-CNA
C	Vacuum pump MINI X20L, conn. T, NBR seals	X20F5-TN
C	Vacuum pump MINI X20L, conn. T, NBR seals, non-return valve	X20F5-TNA

Viton® or EPDM seals optional (i.e. Part No. X20A5-AV or X20A5-AE)





Ordering information, accessories

Description	Part No.
Seal kit MINI 5-28, NBR	32.01.097
Seal kit MINI 5-28, Viton®	32.01.097V
Seal kit MINI 5-28, EPDM	32.01.097E

Seal kits include flap valves, gaskets and compressed-air filters.