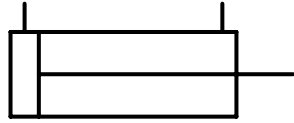
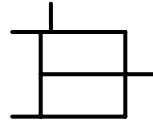


**Fluid Power Schematic Symbols**

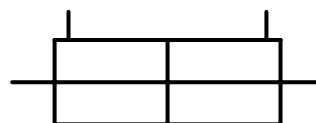
**Cylinders**



Double-Acting, Single End Rod



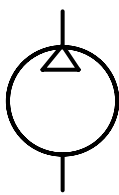
Single-Acting, Pull



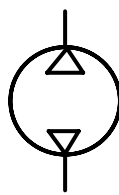
Double-Acting, Double End Rod

**Compressors and Motors:**

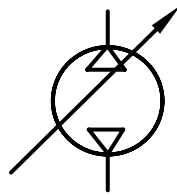
Compressors



Fixed Displacement Single Rotation

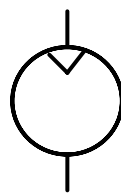


Fixed Displacement Bi-Rotational

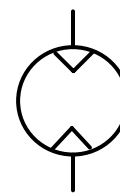


Variable Displacement

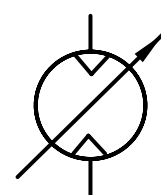
Motors



Fixed Displacement Single Rotation

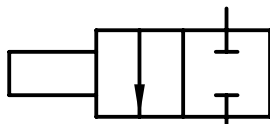


Fixed Displacement Bi-Rotational

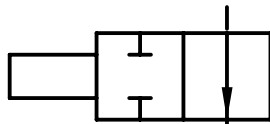


Variable Displacement

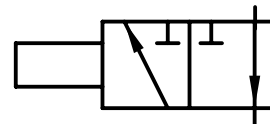
**Directional Control Valves**



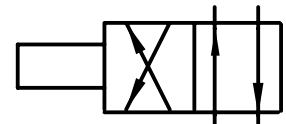
2-way, normally closed (NC)



2-way, normally open (NO)

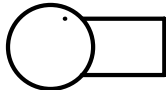


3 way, 2 position

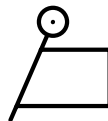


4-way, 2 position

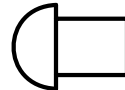
**Directional Control Valve Actuators**



Cam operated



Manual lever



Palm button



Pedal



Solenoid



Spring centered solenoid

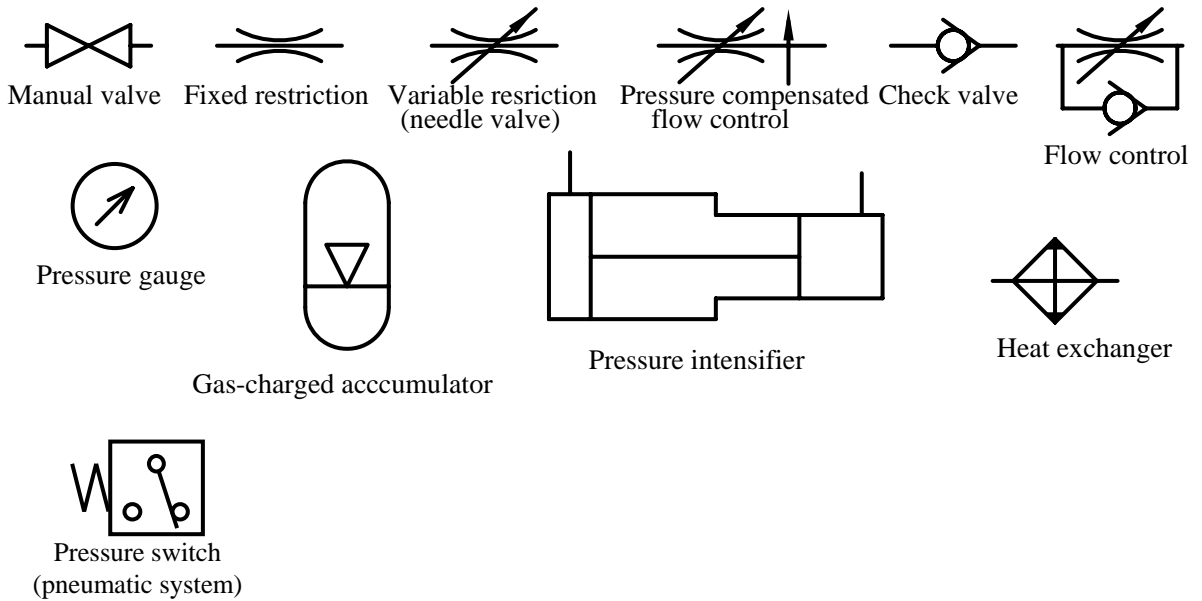


Spring center



Pilot operated

Miscellaneous Fluid Power Components



Typical Complete Pneumatic System

