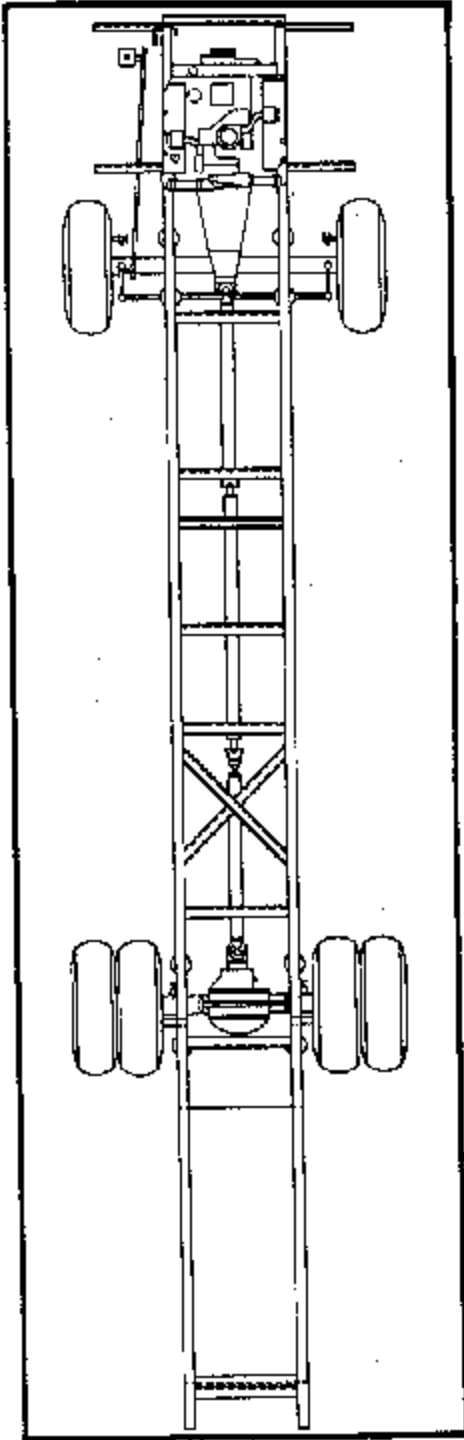
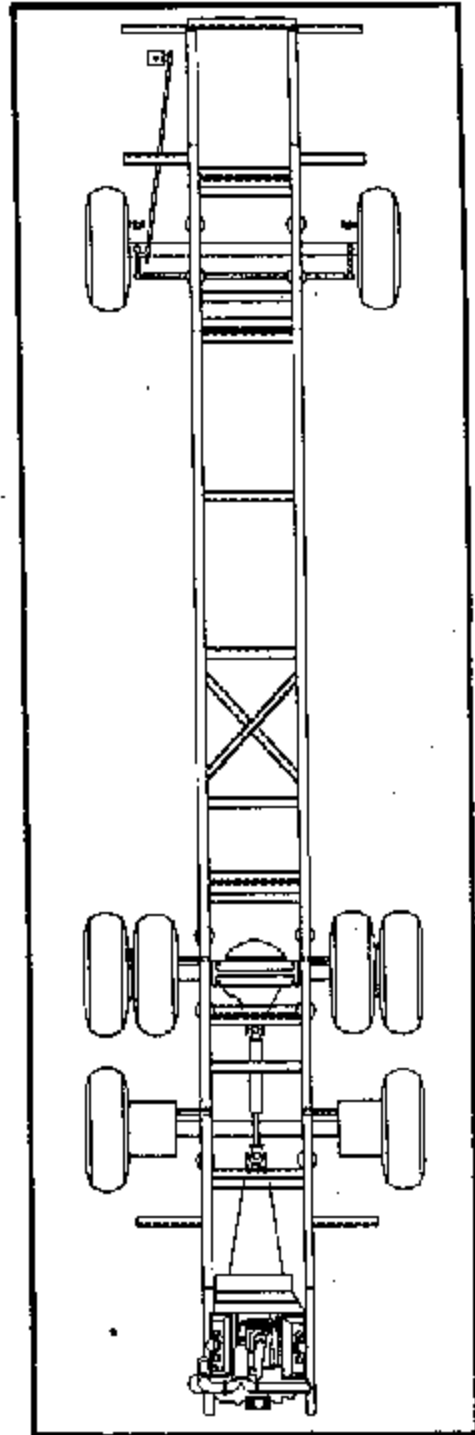


Chassis Maintenance Presentation
At Owners Service Workshop
Herman Wernecke



FORWARD CONTROL



PUSHER

Forward Control

Engine

Transmission

Front Axle

Drive Line

Rear Axle

ENGINE (CAT) - *Picture # 1*

Item #1 ENGINE OIL - Coach leaves Wanderlodge with SAE #30 weight oil

Engine manufacturers recommendation are to follow thereafter at oil change intervals

Item #2 POWER STEERING PUMP - Check periodically for fluid - Use Dexron II

Item #3 ENGINE OIL FILTER - Follow manufacturer's recommended maintenance schedule

Item #4 TRANSMISSION - External filter - 1st 5,000 miles, then at normal oil change intervals.
* Internal filter and oil - 25,000 miles or 12 months.

FRONT AXLE WITH STEERING - *Picture # 2*

STEERING LINKAGE (DRAG ROD)

Item #6

Service - 5,000 miles or 6 months,
whichever occurs first

Lubricant - NLG1 grade No. 2

FRONT AXLE

Item # 1 (Tie rod ends), 4 (King Pins)

Service - 50,000 miles or 12 months,
whichever occurs first

Lubricant - NLG1 Grade No. 2

FRONT AXLE WITH STEERING - *Picture #2*

BRAKE CAMSHAFT (BRAKE SLACK ADJUSTER)

Item # 2, 3

Service - 50,000 miles or 6 months,
whichever occurs first

Lubricant - NLG1 Grade No. 2 (NLG1 Grade No. 1
special stopmaster grease for brake
slack adjuster)

WHEEL BEARINGS FRONT AXLE - *Picture #2*

Item #5

Service - 12 months

Lubricant - Hypoid gear oil S.A.E. 85 W/90

REAL AXLE WITH DRIVE LINE - *Picture #3*

PROPELLOR SHAFT UNIVERSAL JOINT

PROPELLOR SAHFT SLIP JOINT

Item #1, 2 (Use low pressure)

Service - 15,000 miles or 3 months,
whichever occurs first

Lubricant - NLG1 Grade No. 2

REAR AXLE

BRAKE CAMSHAFT (BRAKE SLACK ADJUSTER) - Picture #4

Item #1, 2

Service - 50,000 miles or 6 months,
whichever occurs first

Lubricant - NLGI Grade No. 2 (NLGI Grade No. 1

Special stopmaster grease for brake slack adjust.)

REAR AXLE - Picture #4

Item # 3

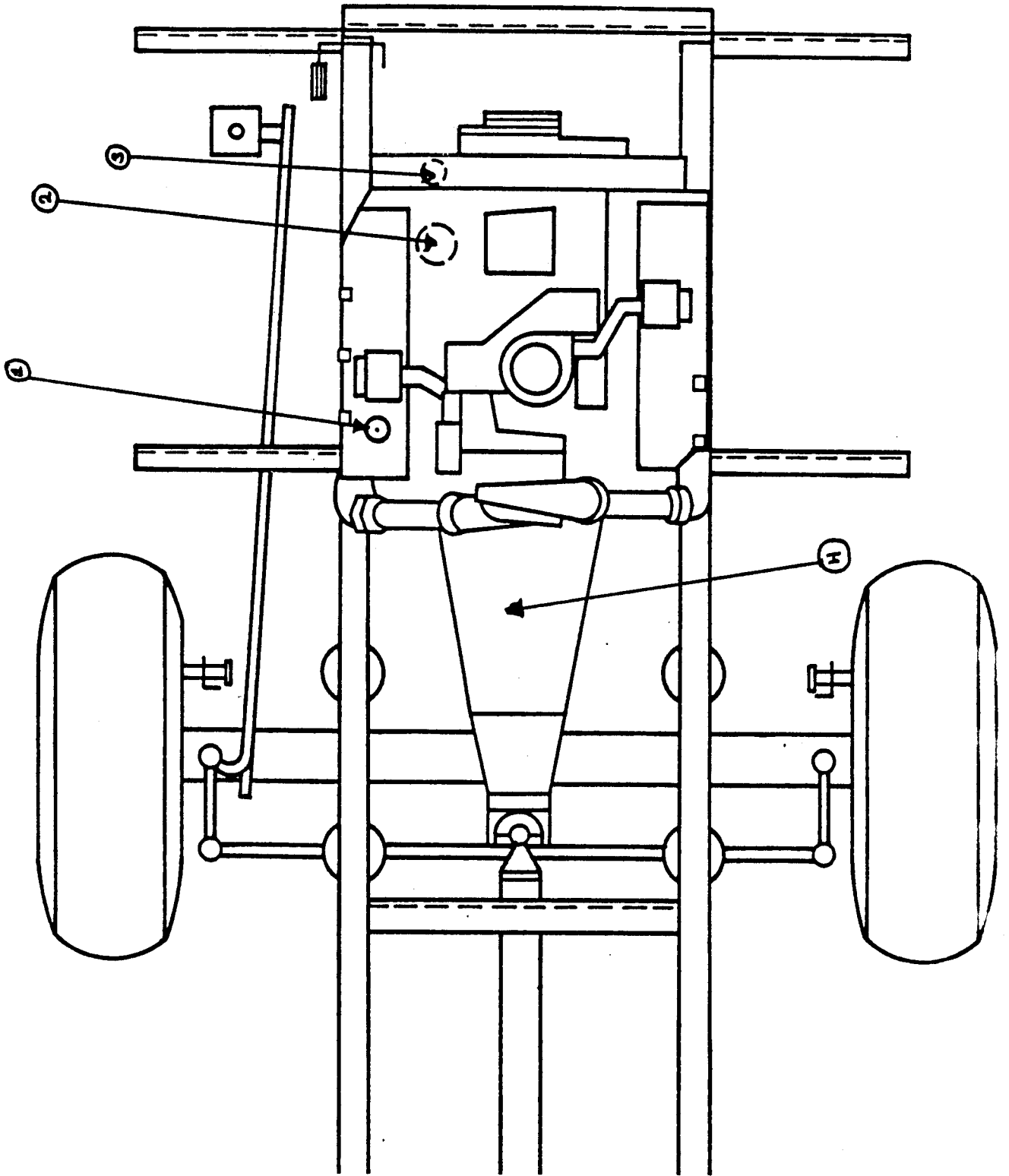
Service - 25,000 miles or 6 months,
whichever occurs first

Lubricant - Hypoid gear oil S.A.E. 140 or S.A.E. 85 W/140
or S.A.E. 80 W/140

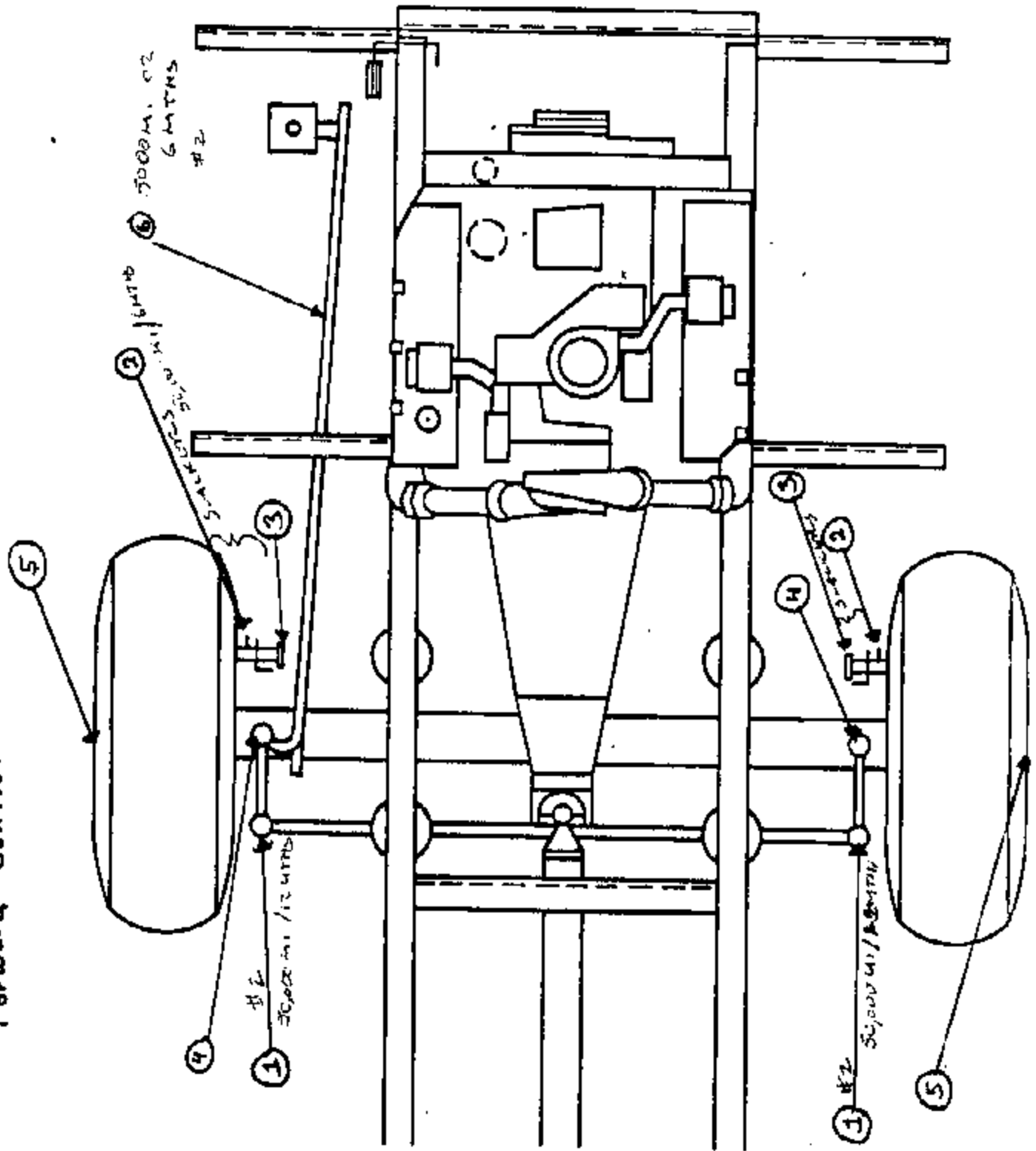
CHECK FOR

1. 1-FITTING DRIVE SHAFT RETARDER (SPECIAL GREASE)
2. REAR LEVELING JACK GREASE FITTING
3. LUBRICATE LEVELING JACKS #30 OIL
PIVOT

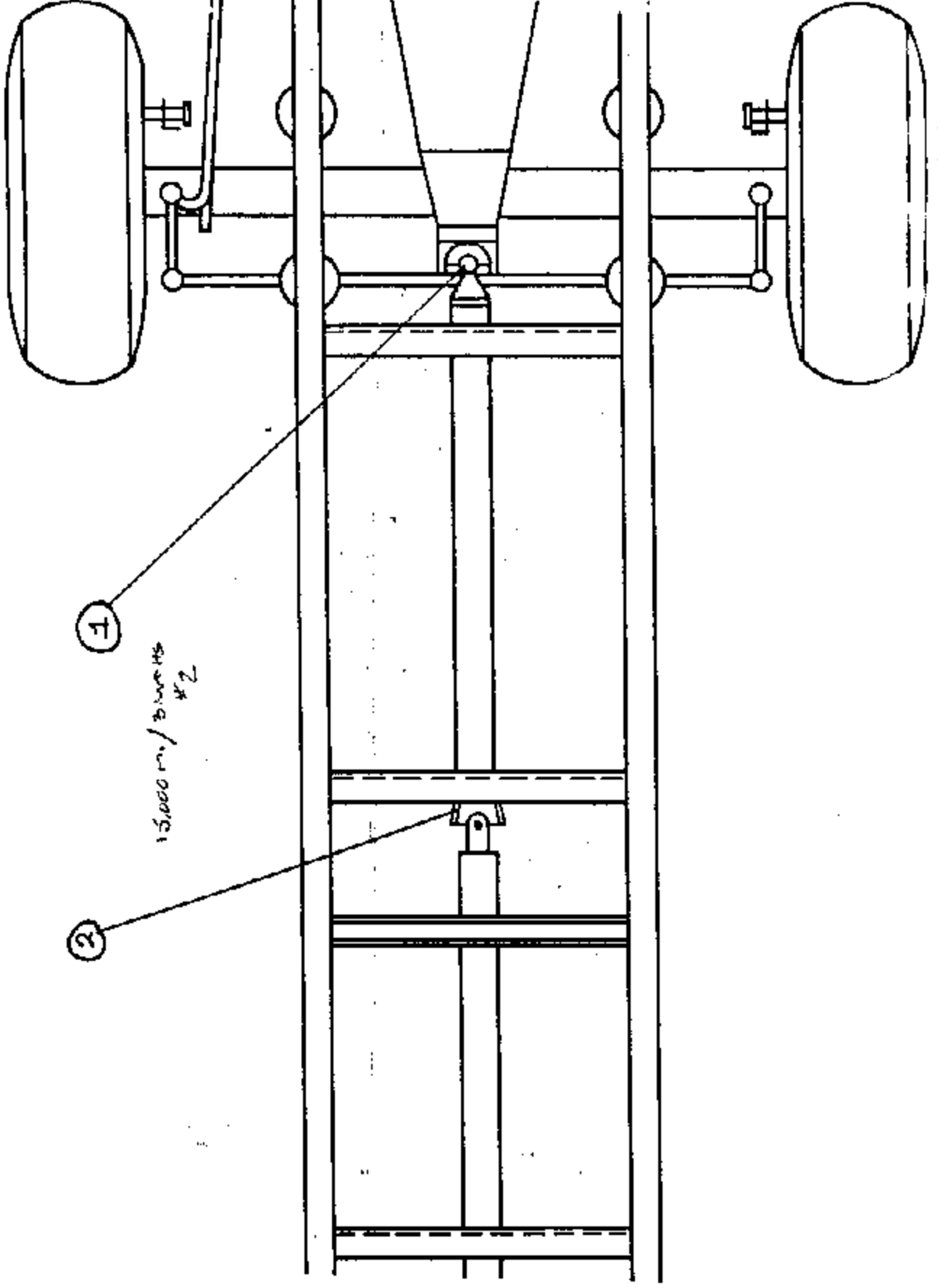
Engine (Cat - Picture #1)
Forward Control



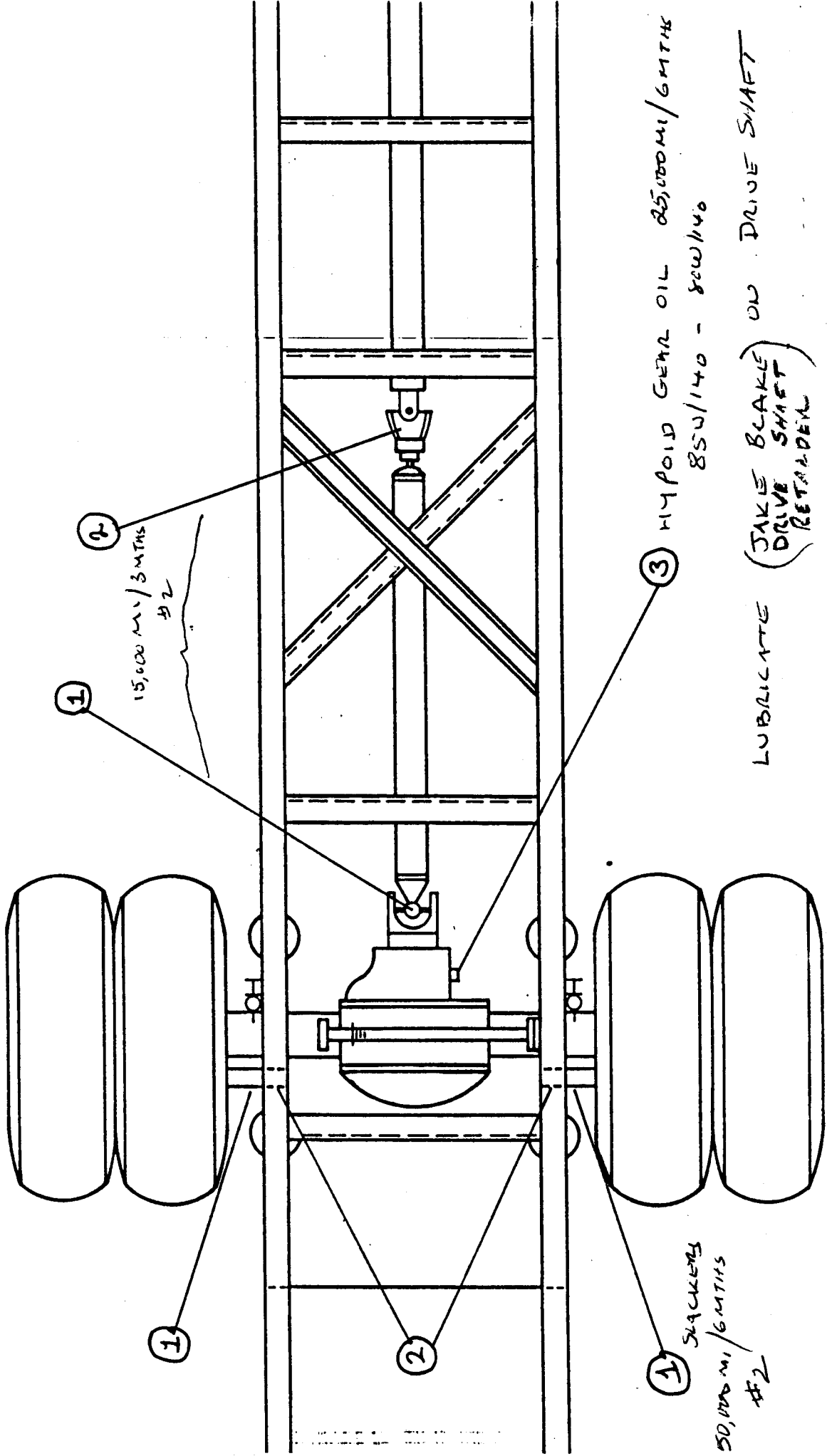
Front Axle With Steering (FC) - Picture #2
Forward Control



Propeller Shaft - Picture #3
Forward Control



Rear Axle with Drive Lines - Pic # H
Forward Control



1 50,000 MI / 3 MTHS #2

2 15,000 MI / 3 MTHS #2

3 HYPOID GEAR OIL 85W/140 - 80W/140
LUBRICATE (JAKE BLAKE DRIVE SHAFT RETAINER) ON DRIVE SHAFT

1 SHACKLES
50,000 MI / 6 MTHS #2