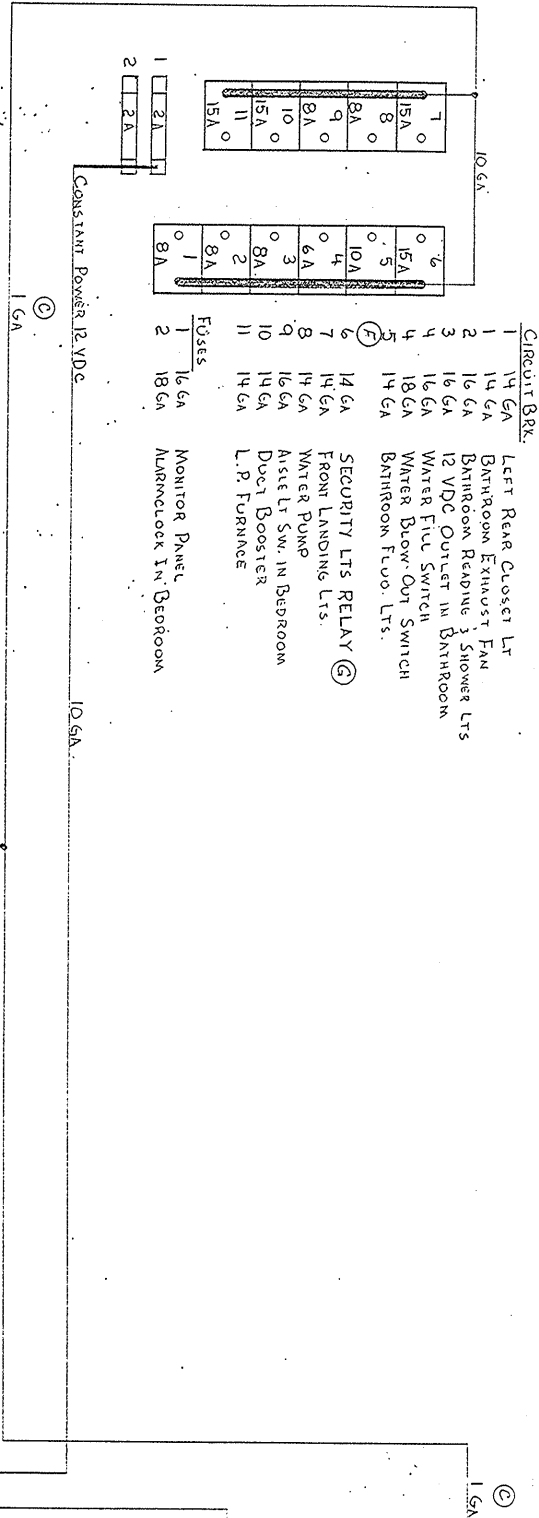
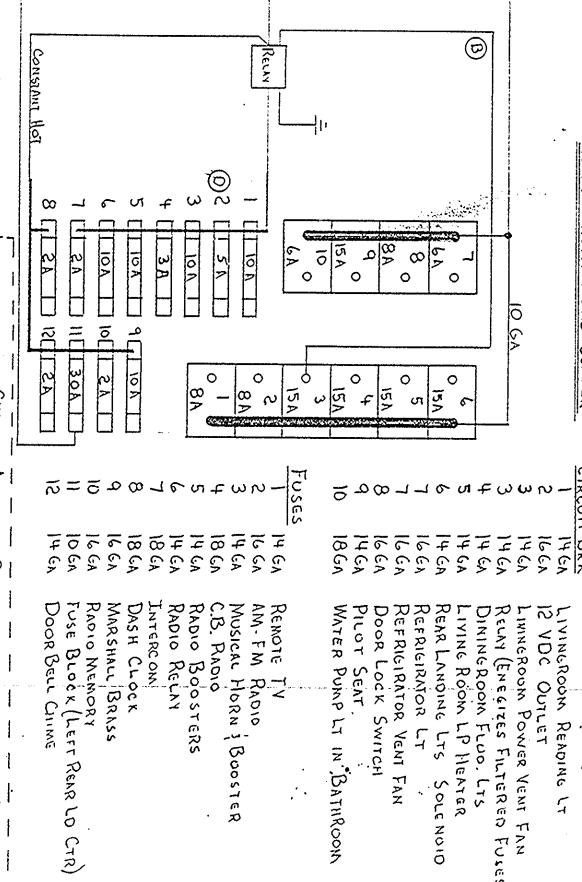


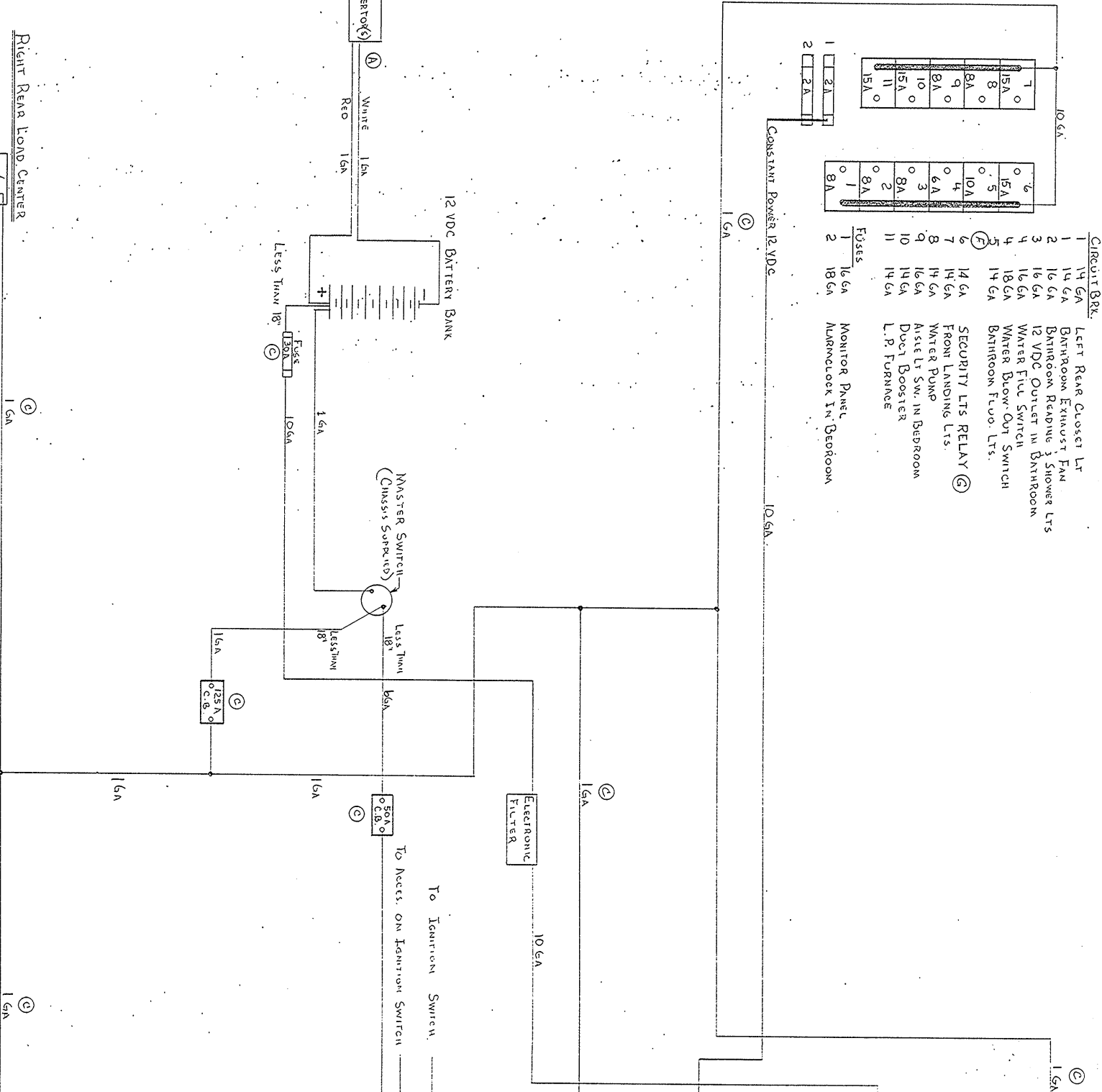
**LEFT REAR LOAD CENTER**



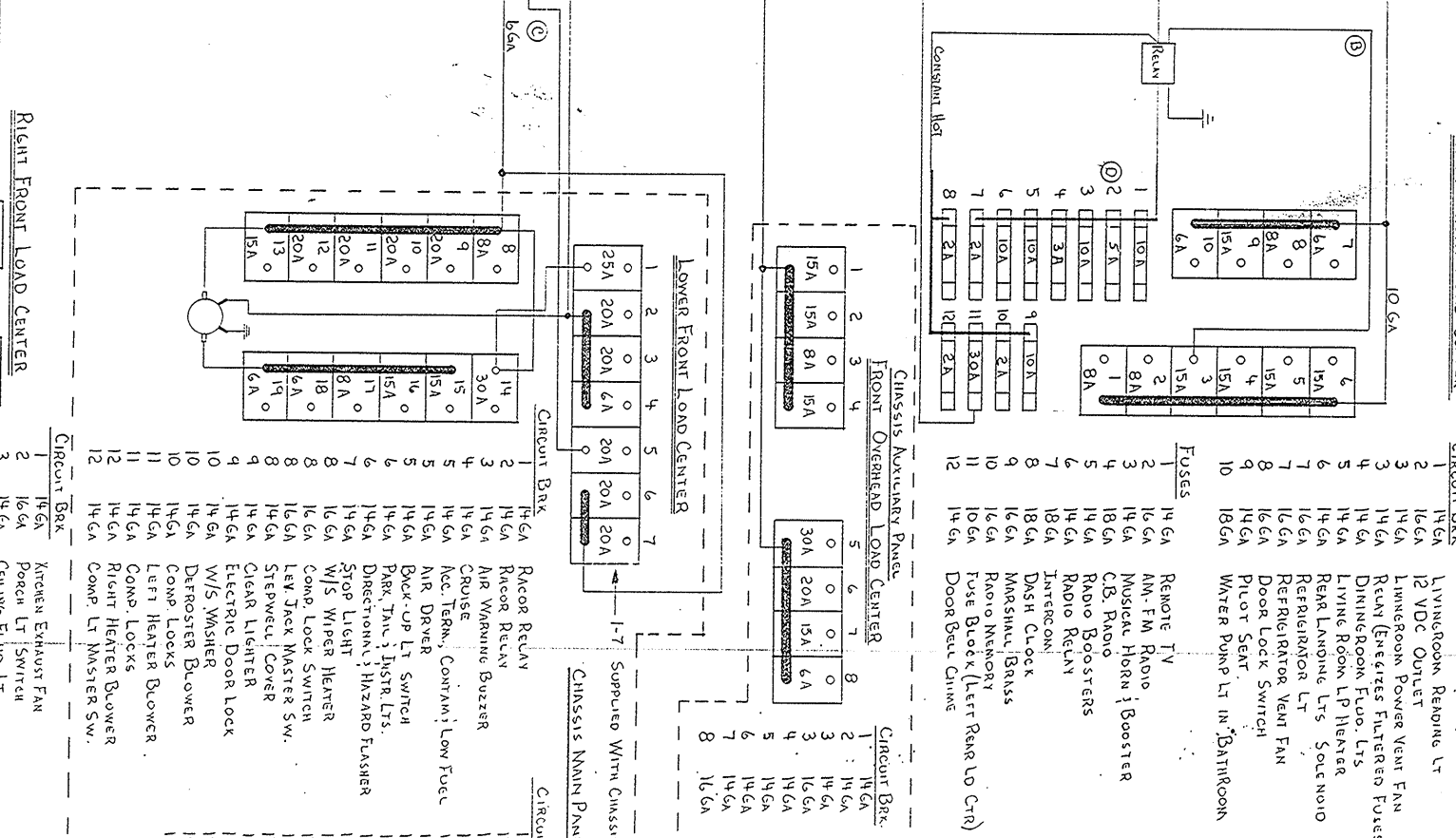
**LEFT FRONT LOAD CENTER**



**RIGHT REAR LOAD CENTER**



**RIGHT FRONT LOAD CENTER**



1	15A	6
2	15A	5
3	15A	4
4	15A	3
5	15A	2
6	15A	1

- Notes:**
1. All Components Have Insulation Rated At Least 60°C And A Minimum Wall Thickness Of 30 Mils Of Thermoplastic Insulation DR Equiv.
  2. All Convertors Are Stranded Type.
  3. Voltage Convertors Comply With NFPA 70-1984 Article 537-4.

1	6A	7
2	8A	8
3	15A	9
4	15A	10
5	15A	11
6	15A	12

1	14 GA	1
2	14 GA	2
3	14 GA	3
4	14 GA	4
5	14 GA	5
6	14 GA	6
7	14 GA	7
8	14 GA	8
9	14 GA	9
10	14 GA	10
11	14 GA	11
12	14 GA	12

1	14 GA	1
2	14 GA	2
3	14 GA	3
4	14 GA	4
5	14 GA	5
6	14 GA	6
7	14 GA	7
8	14 GA	8
9	14 GA	9
10	14 GA	10
11	14 GA	11
12	14 GA	12
13	14 GA	13
14	14 GA	14
15	14 GA	15
16	14 GA	16
17	14 GA	17
18	14 GA	18
19	14 GA	19
20	20 GA	20

**Notes:**

1. 3 AMP Fuse Used ON PANASONIC RADIO

**Blue Bird Wanderlodge, Inc.**  
 FORT VALLEY, GEORGIA, U.S.A.

**DINERAM - LOW VOLTAGE WIRING**  
**WANDERLODGE PARTS**

TOLERANCE ON ALL DIMENSIONS IS, PLUS OR MINUS UNLESS OTHERWISE SPECIFIED.

INACTIVE PARTS NOS.