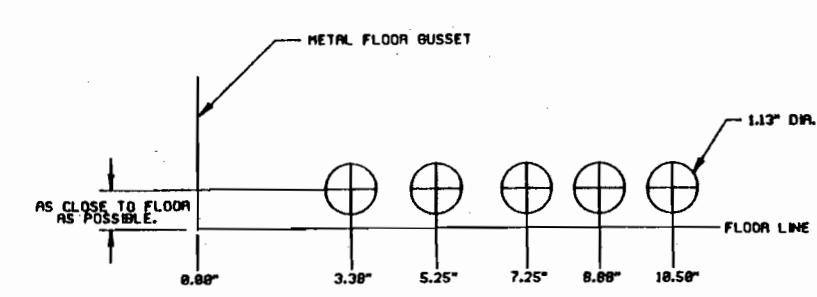


#17, 56, 59, 60, 61, 66  
 #22, 28, 42, 45, 53  
 #25, 26, 29, 49, 50  
 #20, 33, 35, 54, 55  
 #13, 14, 36, 46  
 #15, 34, 46, 48, 67  
 #30, 31, 32  
 #12, 16, 18, 47  
 #62, 63, 64, 65  
 #37, 38, 39, 40, 41



ITEM	P/N	DESCRIPTION	CUT LENGTH	USAGE
1	3941960	CONVECTOR, 12V, 10,000 BTU, PRIMUS		1
2	3941978	CONVECTOR, 12V, 1,000 BTU, PRIMUS		2
3	3941838	ELBOW U-100 RUBBER PRIMUS 714692		5
4	3942158	CLIP, SPRING 22MM, PRIMUS 711652		96
5	3941929	CONVECTOR, NATURAL, PRIMUS TEMI-780523	FULL LENGTH 59IN	5
6	3941929	CONVECTOR, NATURAL, PRIMUS TEMI-780523	40 INCHES	1
7	3941929	CONVECTOR, NATURAL, PRIMUS TEMI-780523	41 INCHES	1
8	3941861	VALVE, BLEEDER, PRIMUS 714731		3
9	3942117	TUBING, CPVC .75" X 10 FT	FULL LENGTH 10FT	12
10	2275733	TIE, CABLE, 7 IN	FULL LENGTH 7IN	34
11	3954799	THERMOSTAT, SNAP-DISC 2E247 91 WL		3
12	3941812	FITTING, DRAIN PETCOCK, PRIMUS 712951		2
13	3941846	VALVE, BALL, PRIMUS 714701		1
14	3941879	HEATER, IMMERSION 120V, PRIMUS 716031		2/10
15	3941887	TANK, HEADER SET, PRIMUS 715170		2
16	3941895	SWITCH, HI TEMP/LO COOLANT, SHUT-OFF, PRIMUS 715731		2
17	3941911	REGULATOR, LP, PRIMUS 13200H		1
18	3941937	PUMP, 12V W/.75 PORTS, PRIMUS C030P51		2
19	3941945	PUMP, 12V W/.625 PORTS, PRIMUS C010P51		1
20	3941952	EXCHANGER, HEAT, PRIMUS P0009301		2
21	3942125	ELBOW, 75 X 90 DEG CPVC		25
22	3942141	HOSE, WATER, 16MM, PRIMUS 710503	16 FT	1
23	3942174	HOSE, WATER, 22MM, PRIMUS 712210	57 FT	1
24	3942182	ELBOW, HOSE, 22MM 6X6, PRIMUS 712231		7
25	3942190	ELBOW, HOSE, SHORT, PRIMUS 715100		1
26	3942265	TEE, PIPE 22MM X 16MM X 22MM, PRIMUS 713041		3
27	3942273	FITTING, HOSE REDUCER, PRIMUS 714871		3
28	3954807	HOSE, BLEED, HIGH TEMP, PRIMUS 91 WL	12 FT	1
29	3954815	BRACKET, CONVECTOR, PRIMUS, 711632 91 WL		4
30	3954823	FITTING, PETCOCK, PRIMUS, 712952 91 WL		2
31	3954831	FITTING, GAS, PRIMUS, BOILER 91WL		2
32	3954849	BOILER, LP, PRIMUS 249005 91 WL		2
33	2000589	CLAMP, CABLE L, 16		4
34	3941903	CLIP, SPRING 6MM, PRIMUS 715632		4
35	2223618	STRAP, CONDUIT, 1 1/4 IN T&B NO 1214		20
36	3941531	VALVE, SOLENOID, CHASSIS HEATER, BUSCH 1147412		1
37	0858902	INSULATION, ARMAFLEX, 2 1/8 ID X 3/8 WALL	10 FT	1
38	1280718	INSULATION, ARMAFLEX, 3/4 ID X 3/8 WALL	10 FT	1
39	3954757	BRACKET, MTG, HEAT EXCHANGER 91 WB		2
40	3954765	BRACKET, MTG, FAT HOSE, HEAT EXCHANGER 91 WB		1
41	3954773	PLATE, MTG, REAR HOSE HEAT EXCHANGER 91 WB		1

NOTE: \* FOUND IN THE ENGINE COMPARTMENT.  
 \*\* USED TO INSTALL OR CHARGE AS NEEDED.

ITEM	P/N	DESCRIPTION	CUT LENGTH	USAGE
42	3974292	BRACKET, RESERVOIR, PRIMUS 91		1
42	2202562	SEALANT, BLACK		1
44	3789294	CAPACITOR, ELEC POLAR, 1000 MICRO WORKING VOLTS		1
45	3969501	BRACKET, MTG, PRIMUS, J-BOX		1
46	1077718	RELAY, BOSCH 0-332-204-150		3
47	0559047	TEE, MALE, BRANCH, 1/4 PIPE, 3600 X 4		1
48	2211118	BOX, RECEPTICAL, WEATHERPROOF		1
49	2227009	CONNECTOR, STGHT, LIQUIDITE, 1/2 IN		1
50	2264409	COVER, BLANK, WITH GASKET		1
51	3875416	CONNECTOR, COAD, GRIP, ELEC., 375 HUB, .25-.37		1
52	1391705	ANTIFREEZE, LOW SILICATE ETHYLENE GLYOL BASE		10 GAL
53	3743994	NUT, LONG FORGED FLARE, .375 BRASS		3
54	3979416	BRACKET, MTG, RELAY		1
55	3747862	CLAMP, HOSE 5/8 IN		1
56	3979038	SHIELD, BOILER VENTILATION		1
57	6024747	HIGH PRESSURE DECAL		1
58	2253425	CEMENT, ALL PURPOSE, ABS-PVC		1
59	3007559	COUPLING, BRASS, 1/4 IN		2
60	0559047	TEE, MALE, BRANCH, 1/4 PIPE 3600 X 4		2
61	0976060	HOSE ASSY, DUAL LABEL, DH430MP4FP1		1
62	3958709	BRACKET, MTG, PRIMUS BOILER 91 WB		1
63	3959012	PANEL, END RH, PRIMUS BOILER, 91 WB		1
64	3959205	PANEL, END LH, PRIMUS BOILER, 91WB		1
65	3959319	PANEL, TOP, PRIMUS BOILER 91 WB		1
66	2260719	ELBOW MALE 3/8" FLARE X 1/4 IN		1
67	2005734	LOOM, ASPHALTUM, WRE, 1IN	16 FT	1
68	3941929	CONVECTOR, NATURAL, PRIMUS TEMI-780523	52.50 INCHES	1
69	3942133	CLEANER, CPVC TUBING	PINT	1
70	6023444	TEE, 3/4 INCH, CPVC		1

MATERIAL:

FLAT SIZE:

FINISH COLOR OR TYPE

RAW  PAINT

PRIME  PLATING

OTHER

REVISIONS

REV	DATE	BY	APP.	CHK.	DATE
1	11/13/98	C. OLIVER			

DIAGRAM, HYDRONIC HEAT PLUMBING LAYOUT  
 WBSA '92

SCALE 0.0625

6021208