

PART NO.	DESCRIPTION	QTY.	REFERENCE DESIGNATION
393166	BROCKET, MTL. ELEC. CPM. PHL. LWR. FRT. 98 VR	2	
1877710	SOLENOID, BOSCH 8-332-284-181	30	K1-4, F8-11, K12-18A, K17-33, K38-11, K44
3861878	RELAY, 12VDC, 75A, SPST 8 332 882 155	2	K35, K37
3766530	ALUM. LOW VADDF FLUID BRCS	1	L3 BUSH
6831813	DECAL, WASHER-LOW FLUID MODULE	1	
3771888	BUS BAR, COPPER, GROUND, 6 IN.	1	6RD BUS BAR
3768841	BREAKER, CIRCUIT, 12V, 50AMP, CLJ	2	BRK1, BRK2
3866274	BLADE, FUSE, POWER BLOCK 2885-PH	9	CR BLK
3866268	BREAKER, CIRCUIT, 30AMP, 1771-3812, 12VDC	2	38A
3866258	BREAKER, CIRCUIT, 15AMP, 1771-1518, 12VDC	20	15A
3866284	FUSE, 20AMP, H257-882	2	20LF
3866272	FUSE, 15AMP, H257-888	1	15LVF
3866253	WIRE, THIN INSULATION, HL-SPEC, 14GA ORANGE	ALA	
3866168	WIRE, THIN INSULATION, HL-SPEC, 14GA GREEN	ALA	
3866868	WIRE, THIN INSULATION, HL-SPEC, 14GA YELLOW	ALA	
3865771	WIRE, THIN INSULATION, HL-SPEC, 14GA WHITE	ALA	
3865755	WIRE, THIN INSULATION, HL-SPEC, 14GA BLACK	ALA	
2887417	TERMINAL, SLIDE, FEMALE, 1/4, INSL 14-168A	97	
2256774	TERMINAL, RING, INSULATED 153183	8	
3865557	WIRE, NYLON, 8189 680VOLT 5525	ALA	
2887433	TERMINAL, EYELET, NO. 18 STUD, INSL 14-168A	37	
8522555	TERMINAL, SLIDE, 188A	82	
2256741	TERMINAL, RING, 12 X 18, INSULATED, 153185	29	
3869878	CONNECTOR, CRIMP ON, JIB RECP, 14-16 GA	6	
3845583	MANIFOLD, INTERFACE VALVE, TWO PORT	1	
3848827	VALVE, INTERFACE, ELECTRO-PNEUMATIC	4	Y2-5
3868885	MANIFOLD, INTERFACE VALVE, FOUR PORT, 88 PT	1	
3827213	CONNECTOR, MALE, 10-32 UNF X 1/8 TUBE	5	
3827268	CONNECTOR, FEMALE, 1/8 NPTF X 1/8 TUBE	1	
3844627	FLAM. SCRV. BRSS, 10-32	1	
3827201	CONNECTOR, MALE, 1/8 NPTF X 1/8 TUBE	1	
3827218	CONNECTOR, MALE, 1/8 NPTF X 1/4 TUBE	1	
1383453	MODULE, LOW COOLANT LEVEL SENSOR, DEEC	1	DLH
3887868	MODULE, THROTTLE CONVERTER, ATEC-ODEC2	1	ADCH
3887845	BREAKER, CIRCUIT, 1/2TRMS, SA, 12VDC, PLASTIC	1	BRK3
1351638	BREAKER, CIRCUIT, 20AMP, WATERPROOF, V/HTG. TRMS	1	25A
3887862	BREAKER, CIRCUIT, 1/2TRMS, 15A, 12VDC, PLASTIC	3	BRK4, BRK5, BRK6
1328318	RELAY, TIME DELAY, 60 SEC., SSCC TSD1168 SP	1	K38
1328378	TERMINAL, BLOCK, ELECTRICAL, 12 STUD	1	TER STRIP
1152288	CONNECTOR, TOWER, 3 WAY, PACKARD 12815783	2	TPS, ADCH-C2
1154588	CONNECTOR, TOWER, 1 CIRC, TOWER, WEATHERPACK, PA	1	ADCH-CL
1113387	TERMINAL, MALE, PNL, PACKARD 12818885	3	ADCH-C2
1154541	TERMINAL, FEMALE, SLEEVE, PACKARD, 12818182	4	TPS, ADCH-CL
1133318	SEAL, WIRE, CONN, 12-16GA, PACKARD 12815368	7	TPS, ADCH-CL, ADCH-C2
2887249	DIODE, 1N4148, 3 AMP	12	02-013
3818554	TERMINAL, BLOCK, 4-WAY, 3/8 CENTERS	2	1/8-1, 1/8-3
3818547	RESISTOR, METAL FILM, 1/2 WATT, 1K, RW-650	1	R1
3818539	RESISTOR, METAL FILM, 1/2 WATT, 1K, RW-650	1	R2
3818534	RELAY, BOSCH 8-332-284-125	2	K24 & K26
3866278	FUSE, 15AMP, H257-815	2	15LVF
3866253	FUSE, 5AMP, H257-885	3	5LVF
2885841	FLASHER, LENS-SOL SR2	1	FLASHER
2885874	BROCKET, FLASHER, 223 1818	1	FLASHER
3861242	TERMINAL, RING, NO. 6, .25 STUD	4	
8522561	TERMINAL, BUTT, 10-12, INSULATED	5	
2887489	TERMINAL, BUTT, 14-16, INSULATED	1	
6832864	BOX ASST., ALUMINUM, LOW WASHER MODULE	1	
6831843	DECAL, WASHER-LOW FLUID MODULE	1	
6846819	BREAKER, CIRCUIT, 15 AMP, V8341557	16	15AVH
6846856	BREAKER, CIRCUIT, 30 AMP, V8341557	2	30AVH
6846452	RELAY, TIME DELAY, HYPHON	1	K12

NOTE:  
 1) SEE P/N 6846437 SIZE "E" FOR WIRING INFORMATION

MATERIAL:											
FLAT SIZE:											
FINISH	COLOR OR TYPE	LET	REVISIONS	QTY.	APP.	CK.	EDN	DATE			
AW <input type="checkbox"/>	PAINT <input type="checkbox"/>	REV	9411	Blue Bird Woodlodge						SHEET	
PRIME <input type="checkbox"/>	PLATING <input type="checkbox"/>										
	OTHER <input type="checkbox"/>										
TOLERANCES ON ALL DIMENSIONS IS PLUS		DIMEN ASSY, WIRING, ELECTRICAL COMPONENT PANEL,									
ON HEAVY <input type="checkbox"/> UNLESS OTHERWISE SPECIFIED.		LOWER FRONT									
APPROXIMATE NO. 6823584		BY C. HILLARY		SIZE		1993 MLWB					
REPLACED BY NO.		REV. 2-12-92 BY S. CHAMBERS		C		PART X DC X		6046437			



PART NO.	DESCRIPTION	QTY.	REFERENCE DESIGNATION
1072718	SOLENOID, BOSCH, 0-332-201-161	9	K-1 THRU K-4, K-6 THRU K-10
3851870	RELAY, 12VDC, 75A, SPST 0 332 002 155	1	K-5
3768041	BREAKER, CIRCUIT, 12V, 50AMP, CLA	3	BAK1, BAK2, BAK3
3866274	BLADE, FUSE, POWER BLOCK 2089-P41	3	CIA BLK
3866266	BREAKER, CIRCUIT, 30AMP, 1771-3012, 12VDC	1	30A
3866250	BREAKER, CIRCUIT, 15AMP, 1771-1510, 12VDC	4	15A
3866704	FUSE, 2AMP, M257-002	4	F-2A
3866746	FUSE, 3AMP, M257-003	1	F-3A
3924867	FUSE, 1AMP, M257-001	1	F-1A
3866753	FUSE, 5AMP, M257-005	2	F-5A
3866712	FUSE, 10AMP, M257-010	2	F-10A
3865763	WIRE, THIN INSULATION, MIL-SPEC, 14GA ORANGE	A.A.	
3860160	WIRE, THIN INSULATION, MIL-SPEC, 14GA GREEN	A.A.	
3866860	WIRE, THIN INSULATION, MIL-SPEC, 14GA YELLOW	A.A.	
3865771	WIRE, THIN INSULATION, MIL-SPEC, 14GA WHITE	A.A.	
3865755	WIRE, THIN INSULATION, MIL-SPEC, 14GA BLACK	A.A.	
3902640	TERMINAL, SLIDE, FEMALE, 1/4, INSL 14-16GA	79	
2256774	TERMINAL, RING, INSULATED 455103	6	
3865557	WIRE, HAPLON, 6AWG 600VOLT 5535	A.A.	
0527655	TERMINAL, SLIDE, 10GA	30	
2007433	TERMINAL, EYELET, NO 10 STUD, INSL 14-16GA	14	
2235190	SOCKET, RELAY, 51715	1	SKT1
2235182	RELAY, 12V, 110V, RADIO & SPEAKER	1	K-11
3972015	DUAL RATE ALARM, 12VDC	1	BUZZ
3962792	TERMINAL BLOCK, 12 WAY	5	
1077619	CAP, CONN., CHASSIS WAG., 24 CIRC AMP 206830-1	1	P32
2264349	CLAMP, STRAIN RELIEF, NO. 206130-1	1	P32
3867637	TERMINAL, SOC., AMP 6666-1, TYPE X SN, 14-18GA	A.A.	
3867629	TERMINAL, PIN, AMP, 66597-1, TYPE N, SN 14-18GA	A.A.	
3802949	DIODE, IN5100, 3 AMP	3	
6025522	DECAL, LOAD CNTR, OH-FRT	1	
6025530	DECAL, LOAD CNTR, OH-BURG	1	
6025540	DECAL, LOAD CNTR, OH-KEY	1	
2216604	SOLENOID, SPDT 12VDC CH24401	2	
6046049	BREAKER, CIRCUIT, 15AMP, VB3M15F57, 12VDC	30	15A/M
6046056	BREAKER, CIRCUIT, 30AMP, VB3M30F57, 12VDC	1	30A/M

NOTE:

1) SEE P/N 6043889 SIZE "D" FOR WIRING INFORMATION.

TOLERANCE ON ALL DIMENSIONS IS PLUS  OR MINUS  UNLESS OTHERWISE SPECIFIED.

INACTIVATES NOS **6023592**

REPLACED BY NOS

FINISH COLOR OR TYPE

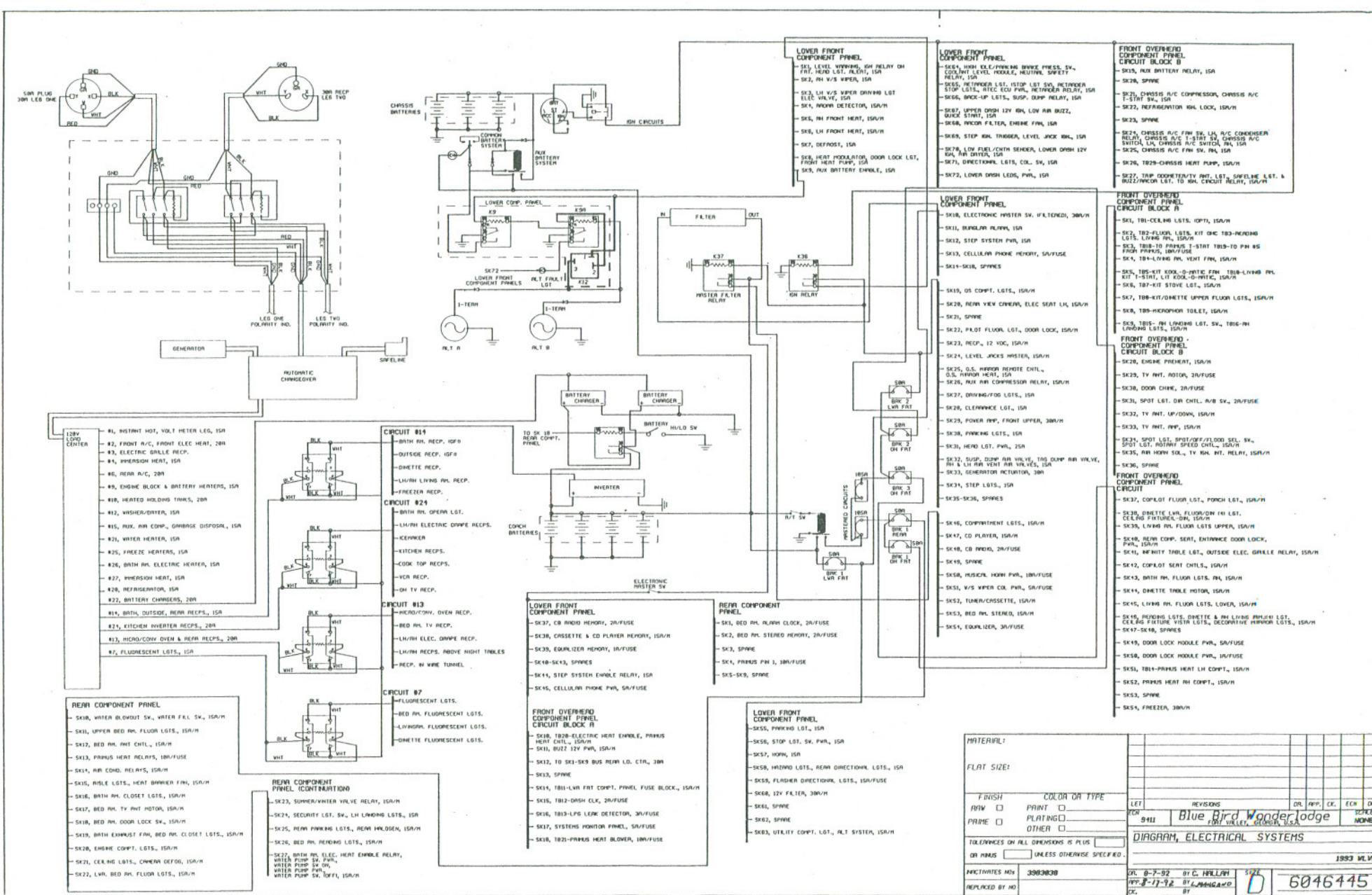
RAW  PRINT

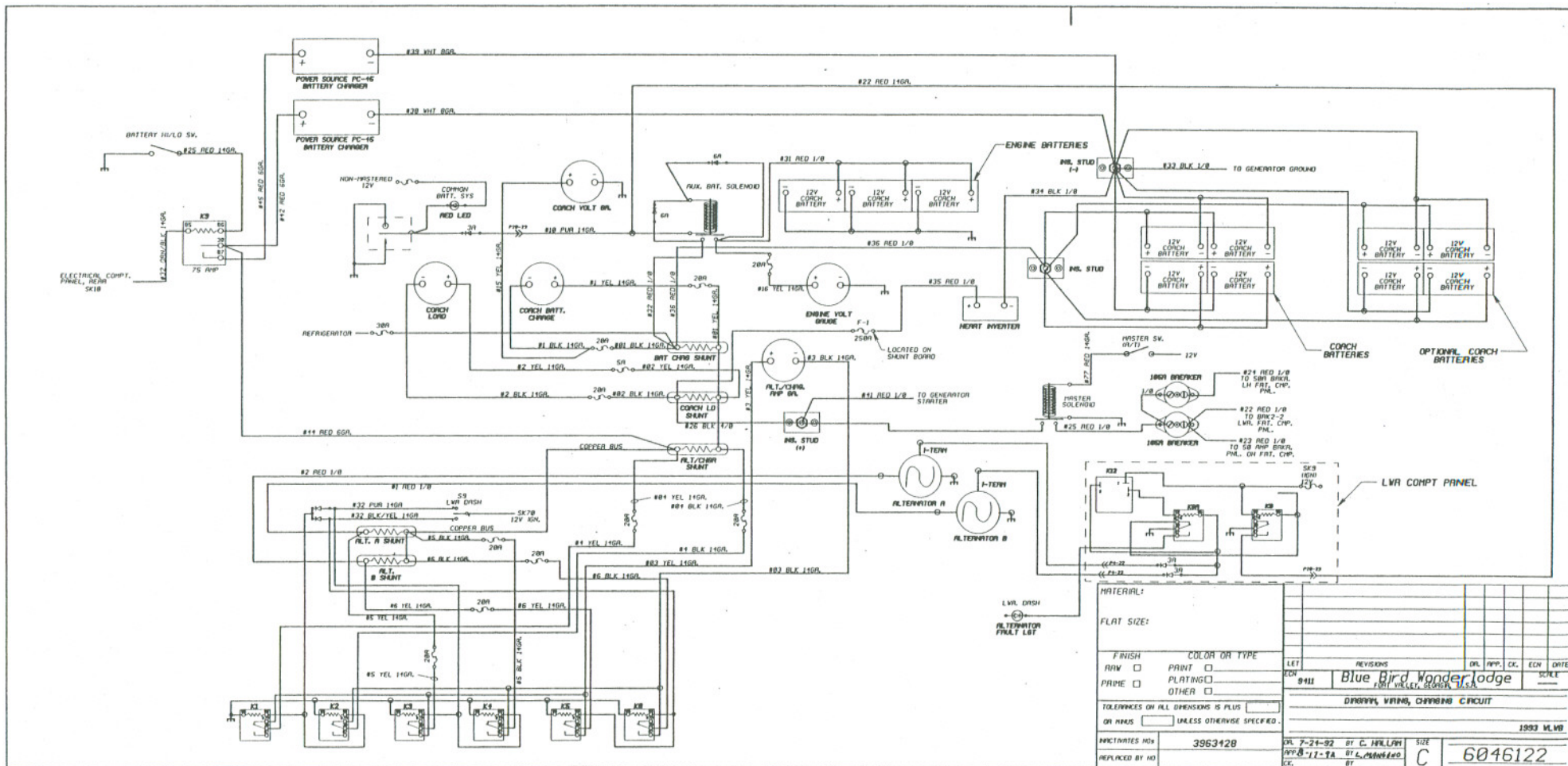
PRIME  PLATING

OTHER

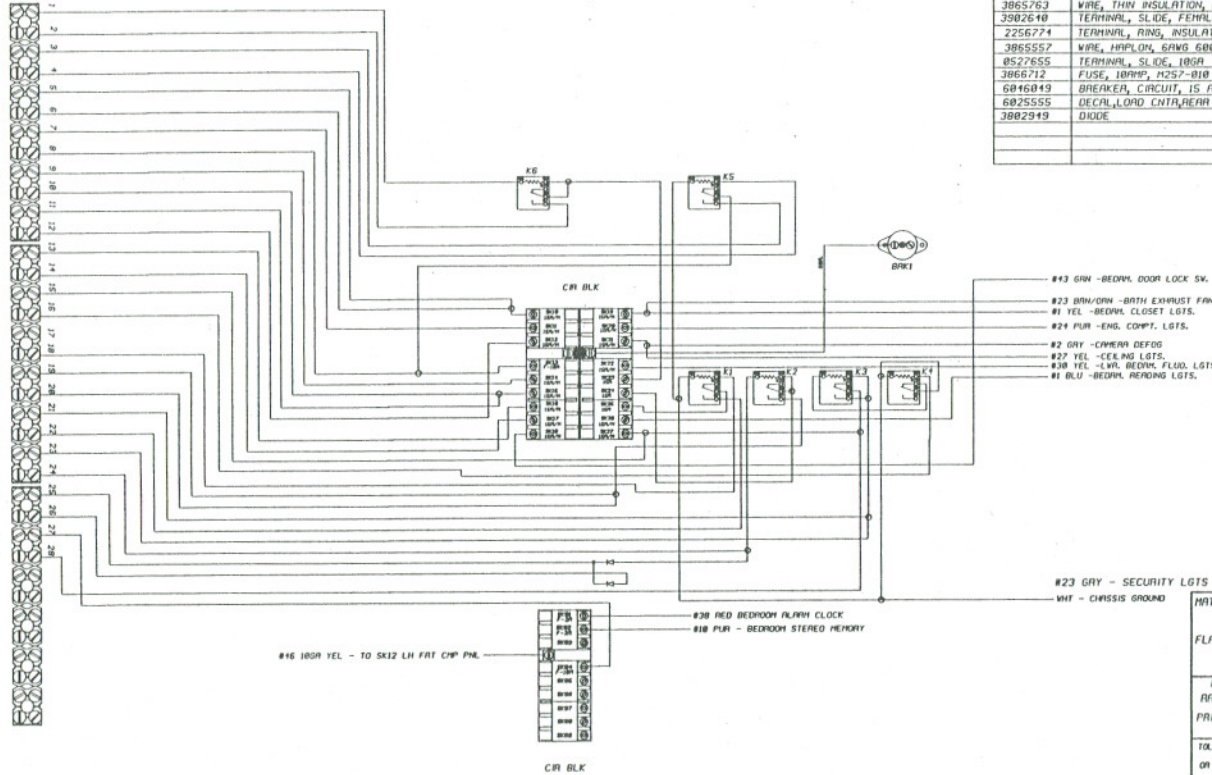
MATERIAL:  
FLAT SIZE:

LET.	REVISIONS	DR.	APP.	CK.	ECN.	DATE
ECN.	Blue Bird Wonderlodge					SCALE
9411	FORT VALLEY, GEORGIA, U.S.A.					-----
DIAGRAM ASSY., ELECTRICAL COMPT PANEL, OH FRONT						
1993 WLWB						
DR.	7-24-92	BY	C. HALLAM	SIZE	PAGE 2 OF 2	
App.		BY		B	6043889	
CK.		BY				





- 01 PUR
- 01 RED
- 1 BLK
- 5 RED
- 17 BLK
- 16 BRN/DRN
- 3 BLU
- 6 BLK
- 18 DRN/BLK
- 18 BRN/DRN
- 1 PUR
- 20 GRN
- 29 YEL
- 13 GRN
- 17 RED
- 17 BLU
- 20 GRN/WHI
- 25 BLU/BLK
- 1 GRN/WHI
- 26 WHI/BLK
- 17 BRN
- 21 PUR
- 1 DRN/BLK
- 23 GRN
- 11 GRN/WHI
- 26 YEL/BLK



PART NO.	DESCRIPTION	QTY.	REFERENCE DESIGNATION
1077710	SOLENOID, BOSCH, 0-332-204-1E1	6	K1-6
3066271	BLADE, FUSE, POWER BLOCK 2009-P41	2	CR BLK
3066250	BREAKER, CIRCUIT, 15AMP, 1271-1510, 12VDC	3	ISA
3066204	FUSE, 20AMP, M257-002	2	
3760041	BREAKER, CIRCUIT, 12V, 50AMP, CLA	1	BRK1
3065763	WIRE, THIN INSULATION, ML-SPEC, 14GA ORANGE	-	
3002640	TERMINAL, SLIDE, FEMALE, 1/4, INSL 14-16GA	10	
2256774	TERMINAL, RING, INSULATED 455103	1	
3065552	WIRE, HAFLOM, 6AWG, 600VOLT 5525	0.5FT	
0527655	TERMINAL, SLIDE, 10GA	11	
3066712	FUSE, 10AMP, M257-010	2	
6046049	BREAKER, CIRCUIT, 15 AMP, V03H15F57	14	ISA/M
6025555	DECAL, LOAD CNTA, REAR	2	
3002919	DIODE		

TERMINAL #	LABEL - DESCRIPTION
1	#1 - PUR - SUPER/WATER SWITCH
2	#2 - RED - SUPER/WATER VALVE
3	#3 - BLK - FANBUS HEAT
4	#4 - RED - FANBUS HEAT
5	#5 - BLK - WATER IN/OUT SWITCH
6	#6 - BRN/DRN - WATER FILL SWITCH
7	#7 - BLU - UPPER BEDROOM FLOOR LIGHTS
8	#8 - BLK - PAN. FANBUS HEAT RELAYS
9	#9 - BRN/BLK - ALL CONTROLLING RELAYS
10	#10 - GRN - BEDROOM FAN/DOOR CONTROL
11	#11 - PUR - HEAT BARBER FAN
12	#12 - BRN/DRN - HOCK LGTS
13	#13 - YEL - BATHROOM CLOSET LGTS
14	#14 - GRN - BEDROOM TV/PHONE MOTOR
15	#15 - RED - WATER PUMP SWITCH POWER
16	#16 - BLU - WATER PUMP SWITCH DEF
17	#17 - GRN/WHI - REAR PARKING LIGHTS
18	#18 - BLU/BLK - LH REAR PARKING LIGHT
19	#19 - BLU/BLK - RH REAR PARKING LIGHT
20	#20 - WHI/BLK - REAR WASHDOWN
21	#21 - BRN - WATER PUMP SWITCH ON
22	#22 - GRN/WHI - WATER PUMP POWER
23	#23 - GRN/BLK - SECURITY LIGHT SWITCH
24	#24 - GRN - SECURITY LIGHTS
25	#25 - GRN/WHI - FANBUS FAN 1
26	#26 - YEL/BLK - BATHROOM ELEC HEAT EMBLE RELAY

MATERIAL:

FLAT SIZE:

FINISH COLOR OR TYPE

RAW  PAINT

PRIME  PLATING

OTHER

TOLERANCES ON ALL DIMENSIONS IS PLUS

OR HIPS  UNLESS OTHERWISE SPECIFIED.

REACTIVATES NO: 0023000

REPLACED BY NO:

REV. 7-27-92 BY C. MULLIN SIZE

REV. 8-22-92 BY A. MULLIN C

9411 Blue Bird Wonder Lodge

Blue Bird Wonder Lodge

DIAGRAM ASST, ELECTRICAL COMPONENT PANEL, REAR, 12VDC

1993 MLWB

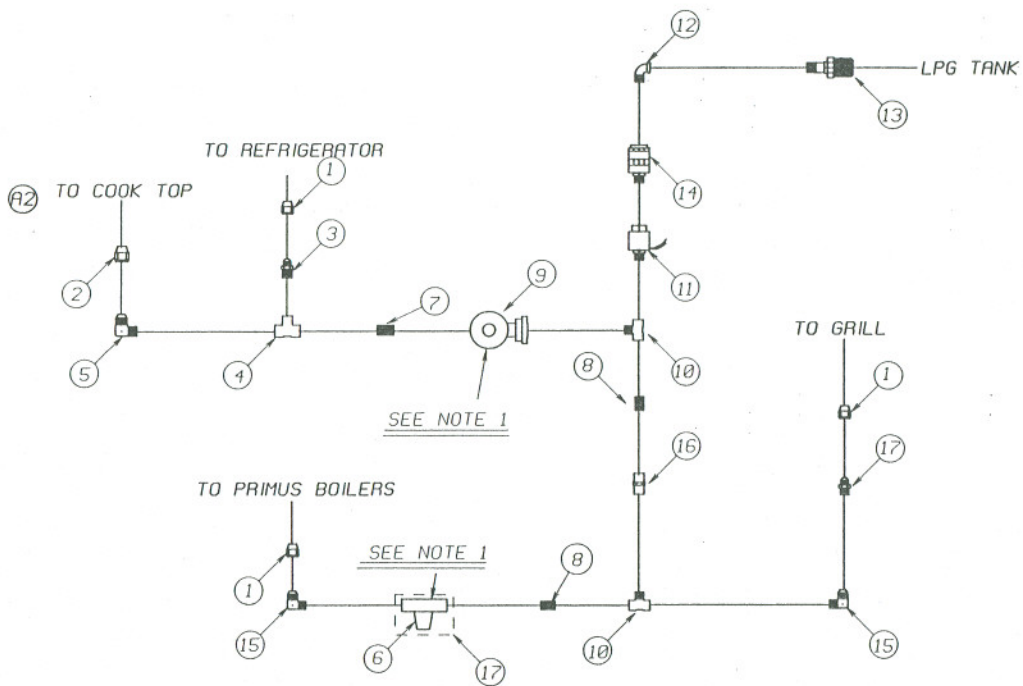
6043905











**NOTE:**

1. PART NOS. 3879814 (ITEM #9) AND 3941911 (ITEM #6) MUST BE MOUNTED HORIZONTALLY AS SHOWN. THIS WILL POINT THE VENTS ON EACH STAGE OF THE REGULATORS DIRECTLY DOWN. THIS MOUNTING POSITION SATISFIES ANSI A119.2 - HEATING SYSTEMS, 2-2.7.6. ALWAYS INSTALL THE PLASTIC REGULATOR COVERS.

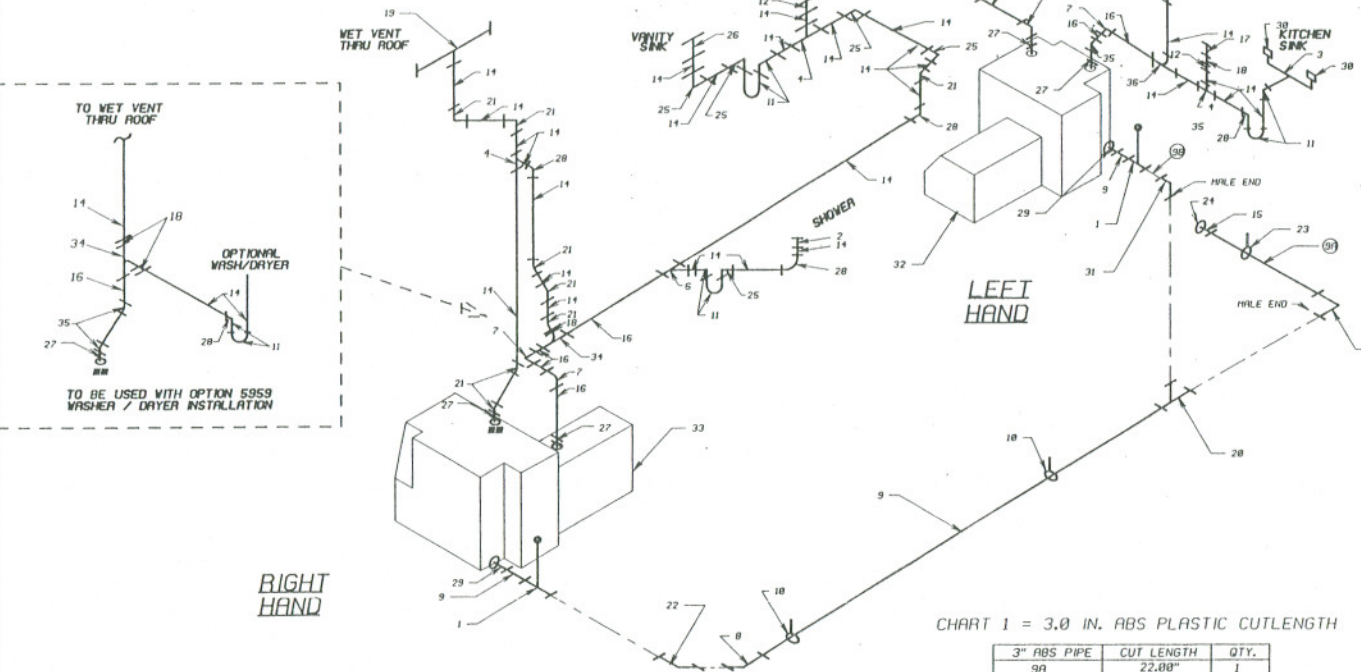
ITEM	PART NO.	DESCRIPTION	QTY.
1	3743994	NUT, LONG, FORGED FLARE, 0.375, BRASS	3
2	3744000	NUT, LONG FORGED FLARE, 0.50, BRASS	1
3	0388231	CONECTOR, 0.375 MPT X 0.375 FL, BRASS	1
4	2027258	TEE, 0.375 FPT, BRASS	1
5	2265155	ELBOW, MALE, 0.50 X 0.375 MPT 49 X 8	1
6	3941911	HIGH PRESSURE REG. FOR PRIMUS	1
7	2027191	NIPPLE, 0.375 CLOSE PIPE, BRASS	1
8	2027183	NIPPLE, 0.250 CLOSE BRASS	2
9	3879814	REGULATOR, TWO STAGE, LPG, NO. R330/37	1
10	0559047	TEE, MALE, BRANCH, 1/4 PIPE	2
11	3937133	VALVE, LPG, SOLENOID	1
12	3940681	ELBOW, 1/4, 90°, GALV.	1
13	USE POL FITTING THAT COMES WITH ITEM #9		1
14	3954047	FILTER, LPG, HIGH PRESSURE	1
15	2260719	ELBOW, MALE, 0.375 FL X 1/4 MPT	2
16	3807559	COUPLING, BRASS, 1/4	1
17	6035687	COVER, LPG REGULATOR	1

LPG TANK - 11 GAL. (110 LBS.)  
 MAXIMUM DEVELOPED SYSTEM LENGTH - 35.5' (3/8" COPPER TUBING)  
 BTUH INPUT - 50,500 BTUH  
 TANKS ARE SUPPLIED WITH FLANGES THAT ARE BOLTED TO THE CHASSIS. (1 TANK PER CHASSIS)  
 TUBING IS COPPER TYPE "L".

MATERIAL:									
FLAT SIZE:									
FINISH	COLOR OR TYPE	LET	REVISONS	DR.	APP.	CC.	ECN	DATE	DATE
RAW <input type="checkbox"/>	PAIN <input type="checkbox"/>	9269A	Blue Bird Wonder Lodge						NTS
PRIME <input type="checkbox"/>	PLATING <input type="checkbox"/>	DIAGRAM, PLUMBING, LPG							
OTHER <input type="checkbox"/>		1992 WLWB							
TOLERANCES ON ALL DIMENSIONS IS PLUS UNLESS OTHERWISE SPECIFIED.		PARTIATES NO# 3973757		DR. 2/25/91 BY JGA		SIZE		C 6032825	
REPLACED BY NO		APP. 2/25/91 BY JGA		CC.		BT			

**NOTE:**

1. PLUMBING MUST ADHERE TO ANSI A119-2 CHAPTER 4, PLUMBING SYSTEM REGULATION FOR RECREATIONAL VEHICLES.
2. ALL LINES MUST SLOPE 1/8" OR MORE PER FOOT, PER SECTION 4-7.3.
3. DRAIN TERMINATION MUST BE WITHIN 16 FEET OF THE REARMOST PART OF VEHICLE, PER SECTION 4-7.12.2.
4. PROVENTS MUST BE AT LEAST 6 INCHES ABOVE ITS CONNECTING DRAINAGE LINE, AND MUST BE ACCESSIBLE FOR INSPECTION AND SERVICE.



ITEM	PART NUMBER	DESCRIPTION	QTY. REQ'D. STD. W/OPT. W/DRA	QTY. CHANGE W/OPT. 5959
1	3834710	VALVE, POWER DUMP		2
20	6035016	DRAIN, SHOWER, 1 1/2\"	1	
20	6035024	DRAIN, SHOWER, 1 1/2\"	1	
3	8796398	CONTINUOUS WASTE, CENTER OUTLET, 21 IN.	1	
4	0412618	TEE, SANITARY, ABS, 1.5"	3	
5	2250813	ELBOW, STREET, ABS, 3\"	1	
6	6041842	WTE, ABS, DWV, 1 1/2\"	1	
7	2250800	ELBOW, ABS, 2\"	3	
8	2146643	ELBOW, ABS, 3\"	1	
9	2159453	PIPE, ABS, 3\"	11 FT	
10	2250350	BRACE, HTG. DRAINAGE	3	
11	2133852	TRAP, P, ABS, W/ DOUBLE SEAL UNION, 1.5"	1	
12	2221449	COUPLER, ABS, 1.5"	2	
13	2250205	ELBOW, ABS, 1.5\"	2	
14	2012433	PIPE, ABS, 1.5\"	35 FT	
15	2130711	ADAPTER, BAYONET, DUMP VALVE	1	
16	2012412	PIPE, ABS, 2\"	7 FT	
17	2221588	VENT, CHECK, 1/2\"	5	
18	2221554	ADAPTER, CLEANOUT, ABS, 1.5"	3	+2
19	3918598	VENT, ROOF, VAC-U-LET, INDIAN SILVER	1	
20	2221508	TEE, SANITARY, ABS, 2"	1	
21	2012439	ELBOW, ABS, 1.5\"	11	-2
22	2251187	ELBOW, STREET, ABS, 3\"	1	
23	6041112	BRACE, HTG. DRAINAGE LINE, 7 IN. WLWB	1	
24	2130703	CAP, CHAIN, ABS, DUMP VALVE	1	
25	2255916	ELBOW, ABS, 1.5\"	5	
26	2143443	ADAPTER, TRAP, FEMALE, W/ WASH NUT 1-1/2 X 1-1/2	1	
27	2250453	CLAMP, 2 IN. WATER HOSE	4	
28	2250293	ELBOW, ABS, 1.5\"	6	+2
29	2250339	CLAMP, ADJUST, 4 IN., #56	2	
30B	4432359	STARINER, SINK, KITCHEN, KOHLER, BRASS	1	
30C1	3909302	STARINER, SINK, KITCHEN, KOHLER, CHROME	2	
30C2	3750676	STARINER, SINK, KITCHEN, KOHLER, CHROME	1	
31	6025060	ELBOW, STREET, ABS, 3\"	1	
32	3910749	TANK, HOLDING, 14\"	1	
33	3910731	TANK, HOLDING, 9\"	1	
34	2208624	TEE, SANITARY, 2 INCH	1	+1
35	2143644	ELBOW, ABS, 2\"	1	+2
36	0530314	TEE, SANITARY, ABS, 2\"	1	

SAVED IN CRODVANCE @ 1:1 SCALE.

MATERIAL:					
FLAT SIZE:					
FINISH	COLOR OR TYPE	LET	REVISIONS	DR. APP. CK. ECH. DATE	
RAW <input type="checkbox"/>	PRINT <input type="checkbox"/>	9471	Blue Bird Wonder Lodge	SCALE NONE	
PRIME <input type="checkbox"/>	PLATING <input type="checkbox"/>		FBI, UTILEY, REVERED, U.S.A.		
OTHER <input type="checkbox"/>					
TOLERANCES ON ALL DIMENSIONS IS PLUS <input type="checkbox"/>					
OR MINUS <input type="checkbox"/> UNLESS OTHERWISE SPECIFIED.					
DIAGRAM ASSY., PLUMBING, DRAINAGE, STANDARD 1993 W/DRA					
INACTIVES NO.	6040927	DR. 10/77/92	BY: ARW	SIZE C	5046643
REPLACED BY NO.		DR. 10/77/92	BY: ARW		

**NOTE:**

1. PLUMBING MUST ADHERE TO ANSI A119-2 CHAPTER 4, PLUMBING SYSTEM REGULATION FOR RECREATIONAL VEHICLES.
2. ALL LINES MUST SLOPE 1/8" OR MORE PER FOOT, PER SECTION 4-7.3.
3. DRAIN TERMINATION MUST BE WITHIN 16 FEET OF THE REARMOST PART OF VEHICLE, PER SECTION 4-7.12.2.
4. PROVENTS MUST BE AT LEAST 6 INCHES ABOVE ITS' CONNECTING DRAINAGE LINE, AND MUST BE ACCESSIBLE FOR INSPECTION AND SERVICE.

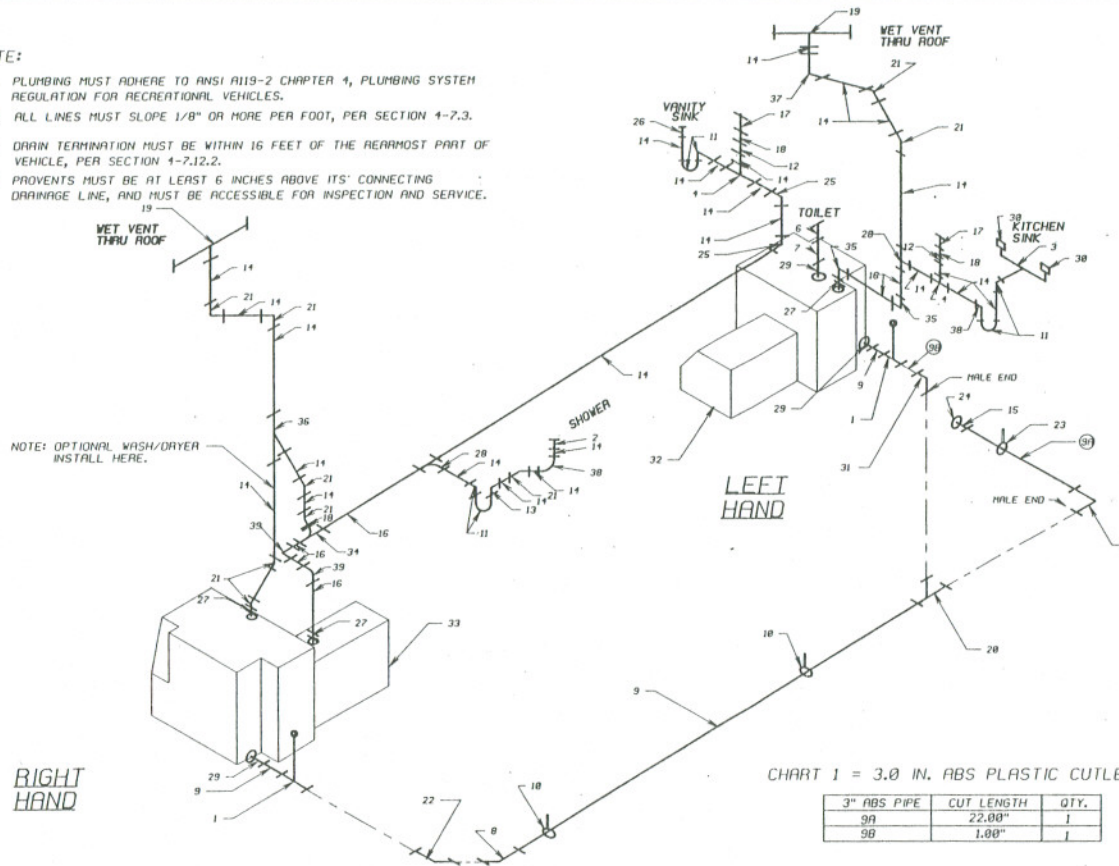
NOTE: OPTIONAL WASH/DRYER INSTALL HERE.

RIGHT HAND

LEFT HAND

CHART 1 = 3.0 IN. ABS PLASTIC CUTLENGTH

3" ABS PIPE	CUT LENGTH	QTY.
9A	22.00"	1
9B	1.00"	1



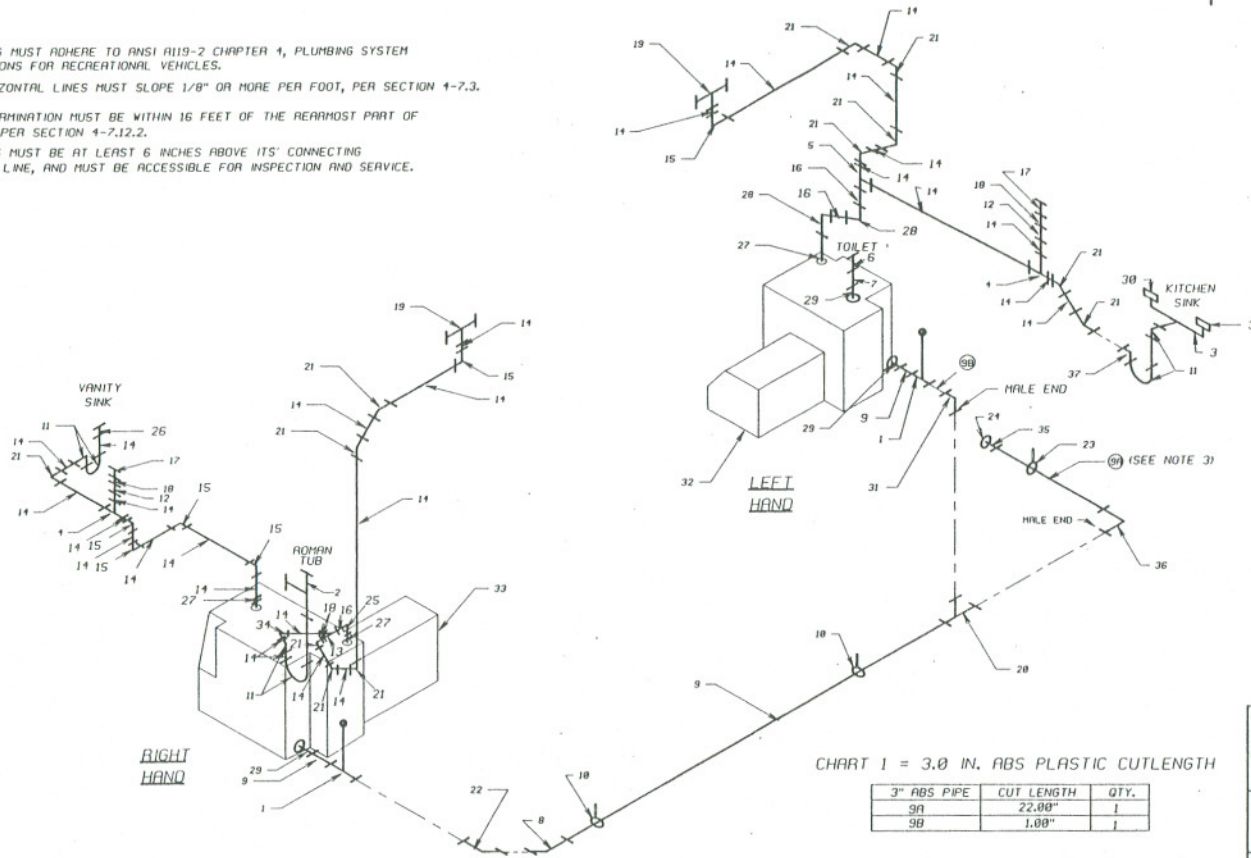
ITEM	PART NUMBER	DESCRIPTION	QTY.	REQ'D
1	3831710	VALVE, POWER DUMP	2	
2B	6036016	DRAIN, SHOWER, 1-1/2", POL. BRASS	1	
2C	6035014	DRAIN, SHOWER, 1-1/2", CHROME	1	
3	3796398	CONTINUOUS WASTE, CENTER OUTLET, 21 IN.	1	
4	0417618	TEE, SANITARY, ABS, 1.5"	2	
5	2258813	ELBOW, STREET, ABS, 3" X 90 DEG, LONG TURN	1	
6	201210	FLANGE, CLOSET, 3" IPT	1	
7	2200688	NIPPLE, 1/2 X 3 X 10	1	
8	2246613	ELBOW, ABS, 3" X 22.5 DEG	1	
9	2194513	PIPE, ABS, 3" X 20 FT, PIONEER BRAND	11 FT	
10	2258358	BRACE, ATG, DRAINAGE	2	
11	2193852	TRAP, P, ABS, W/ DOUBLE SEAL UNION, 1.5"	3	
12	2273449	COUPLING, ABS, 1.5"	2	
13	2066413	ELBOW, STREET, ABS, 1 1/2 45 DEGREE	1	
14	2014342	PIPE, ABS, 1.5" X 20 FT, PIONEER BRAND	35 FT	
15	2198711	ADAPTER, BAYONET DUMP VALVE	1	
16	201317	PIPE, ABS, 2" X 20 FT, PIONEER BRAND	7 FT	
17	2445588	VENT CHECK NO. 149	2	
18	2221554	ADAPTER, CLEANOUT, ABS, 1.5"	2	
19	3018538	VENT, ROOF, VAC-U-JET, INDIAN SILVER	2	
20	2258200	TEE, SANITARY, ABS, 3"	1	
21	2017499	ELBOW, ABS, 1.5" X 45 DEG	9	
22	3751187	ELBOW, STREET, ABS, 3" X 90 DEG	1	
23	607117	DRAIN, ATG, DRAINAGE LINE, FINAL, WLWB	1	
24	2198703	CAP, X CHAIN, ABS, DUMP VALVE	1	
25	2258916	ELBOW, ABS, 1.5" X 90 DEG	2	
26	3741949	ADAPTER, TRAP, CHAIN, W/ WASH NUT 1-1/2 X 1-1/2	1	
27	2204451	CLAMP, 2 IN, WATER HOSE	2	
28	0538314	TEE, SANITARY, ABS, 2" X 1.5" X 1.5"	2	
29	2258339	CLAMP, ADJUST, 1 IN, #56	3	
30A	4493839	STRAINER, SINK, KITCHEN, KOHLER, BRASS	1	
30B1	3989389	STRAINER, SINK, KITCHEN, KOHLER, CHROME	2	
30B2	3758676	STRAINER, SINK, KITCHEN, CORAIN, CHROME	1	
31	6025850	ELBOW, STREET, ABS, 3" X 45 DEG	1	
32	3946749	TANK, HOLDING, 1 1/4 91 WB	1	
33	3940731	TANK, HOLDING, 2 INCH	1	
34	2200624	TEE, SANITARY, 2 INCH	1	
35	2139644	ELBOW, ABS, 2" X 45 DEG	2	
36	6039119	WYE, ABS, 1-1/2 INCH	1	
37	2258205	ELBOW, ABS, 1.5" X 90 DEG, VENT	1	
38	2258233	ELBOW, ABS, 1.5" X 90 DEG, LONG TURN	2	
39	2258801	ELBOW, ABS, 2 X 90 DEGREE, LONG TURN	2	

SAVED IN CADVANCE @ 1/16 SCALE.

MATERIAL:							
FLAT SIZE:							
FINISH	COLOR OR TYPE	LET	REVISIONS	DL	APP.	CK.	EDN
PAV <input type="checkbox"/>	PAINT <input type="checkbox"/>	FOR	9471	Blue Bird Wonder Lodge			SCALE NONE
PRIME <input type="checkbox"/>	PLATING <input type="checkbox"/>	DIAGRAM, ASSY., PLUMBING,					
OTHER <input type="checkbox"/>		DRAINAGE		1993		WBSA	
TOLERANCES ON ALL DIMENSIONS IS PLUS OR MINUS UNLESS OTHERWISE SPECIFIED.		PROJECTS NO		6024335		DATE	
REPLACED BY NO		APP. 3/28/92		BY RWV		SIZE	
		APP. 3/28/92		BY RWV		C 6046254	

**NOTE:**

1. PLUMBING MUST ADHERE TO ANSI A119-2 CHAPTER 4, PLUMBING SYSTEM REGULATIONS FOR RECREATIONAL VEHICLES.
2. ALL HORIZONTAL LINES MUST SLOPE 1/8" OR MORE PER FOOT, PER SECTION 4-7.3.
3. DRAIN TERMINATION MUST BE WITHIN 16 FEET OF THE REAR MOST PART OF VEHICLE, PER SECTION 4-7.12.2.
4. PROVENTS MUST BE AT LEAST 6 INCHES ABOVE ITS CONNECTING DRAINAGE LINE, AND MUST BE ACCESSIBLE FOR INSPECTION AND SERVICE.



3" ABS PIPE	CUT LENGTH	QTY.
9A	22.00"	1
9B	1.00"	1

ITEM	PART NUMBER	DESCRIPTION	QTY.	RECD
1	3834710	VALVE, POWER DUMP	2	
2B	6836839	DRAIN, TUB, 1-1/2", BRASS	1	
2C	6836840	DRAIN, TUB, 1-1/2", CHROME	1	
3	3796398	CONTINUOUS WASTE, CENTER OUTLET, 21 IN.	1	
4	0412618	TEE, SANITARY, ABS, 1.5"	2	
5	0538314	TEE, SANITARY, ABS, 2" X 1-1/2" X 1-1/2"	1	
6	2017218	FLANGE, CLOSET, 3 FBT	1	
7	2208688	NIPPLE, 1/2" X 3 X 10	1	
8	2246643	ELBOW, ABS, 3" X 22.5 DEG	1	
9	2199453	PIPE, ABS, 3" X 20FT, PIONEER BRAND	11 FT	
10	2258358	BARREL, MTG, DRAINAGE	5	
11	2193852	TAMP, T, ABS, W/ DOUBLE SEAL UNION, 1.5"	3	
12	2224449	CLAMP, ABS, 1.5"	2	
13	6839319	WYE, ABS, 1 1/2 INCH	1	
14	2017333	PIPE, ABS, 1.5" X 20FT, PIONEER BRAND	45 FT	
15	2258785	ELBOW, ABS, 1.5" X 90 DEG, VENT	6	
16	2017317	PIPE, ABS, 2" X 20FT, PIONEER BRAND	5 FT	
17	2221588	VENT, CHECK, NO. 140	2	
18	2221554	ADAPTER, CLEANOUT, ABS, 1.5"	4	
19	2018598	VENT, ROOF, VAC-11-1/2, INDIAN SILVER	2	
20	2235208	TEE, SANITARY, ABS, 3"	1	
21	2017499	ELBOW, ABS, 1.5" X 45 DEG	12	
22	3751877	ELBOW, STREET, ABS, 3" X 90 DEG	1	
23	6821117	BARREL, MTG, DRAINAGE LINE, FINAL, WLWB	1	
24	2198703	CAP & CHAIN, ABS, DUMP VALVE	1	
25	2258801	ELBOW, ABS, 2" X 90, LONG TURN	1	
26	3741349	ADAPTER, TRAP, TUB, V. WASH BOT, 1-1/2" X 1-1/2"	1	
27	2203453	CLAMP, 2 IN., WATER HOSE	3	
28	2199644	ELBOW, ABS, 2" X 45 DEG	2	
29	2269329	CLAMP, ADJUST, 1 IN., B56	3	
30A	1492389	STRAINER, SINK, KITCHEN, KOHLER, BRASS	1	
30C1	3989389	STRAINER, SINK, KITCHEN, KOHLER, CHROME	1	
30C2	3758676	STRAINER, SINK, KITCHEN, COBAIN, CHROME	2	
31	6825858	ELBOW, STREET, ABS, 3" X 45 DEG	1	
32	3940749	TANK, HOLDING, LH, 91 WB	1	
33	3940721	TANK, HOLDING, RH, 91 WB	1	
34	2265916	ELBOW, ABS, 1.5" X 90 DEG	1	
35	2198711	ADAPTER, DAYTIME, DUMP VALVE	1	
36	2258843	ELBOW, STREET, ABS, 3" X 90 DEG, LONG TURN	1	
37	2258793	ELBOW, ABS, 1.5" X 90 DEG, LONG TURN	1	

MATERIAL:

FLAT SIZE:

FINISH:  PAINT  PLATING  OTHER

TOLERANCES ON ALL DIMENSIONS IS PLUS UNLESS OTHERWISE SPECIFIED.

ACTIVATES NOW: 6024301

REPLACED BY NO:

REVIEWS: 9472 Blue Bird Wonder Lodge

DIAGRAM ASSY. PLUMBING DRAINAGE, STANDARD 1993 WLWB

DATE: 9/29/92 BY: RNV

DATE: 9/29/92 BY: RNV

SIZE: C

NO: 6046247

**NOTE:**

1. PLUMBING MUST ADHERE TO ANSI A119-2 CHAPTER 4, PLUMBING SYSTEM REGULATIONS FOR RECREATIONAL VEHICLES.
2. ALL HORIZONTAL LINES MUST SLOPE 1/8" OR MORE PER FOOT, PER SECTION 4-7.3.
3. DRAIN TERMINATION MUST BE WITHIN 16 FEET OF THE REARMOST PART OF VEHICLE, PER SECTION 4-7.12.2.
4. PROVENTS MUST BE AT LEAST 6 INCHES ABOVE ITS' CONNECTING DRAINAGE LINE, AND MUST BE ACCESSIBLE FOR INSPECTION AND SERVICE.

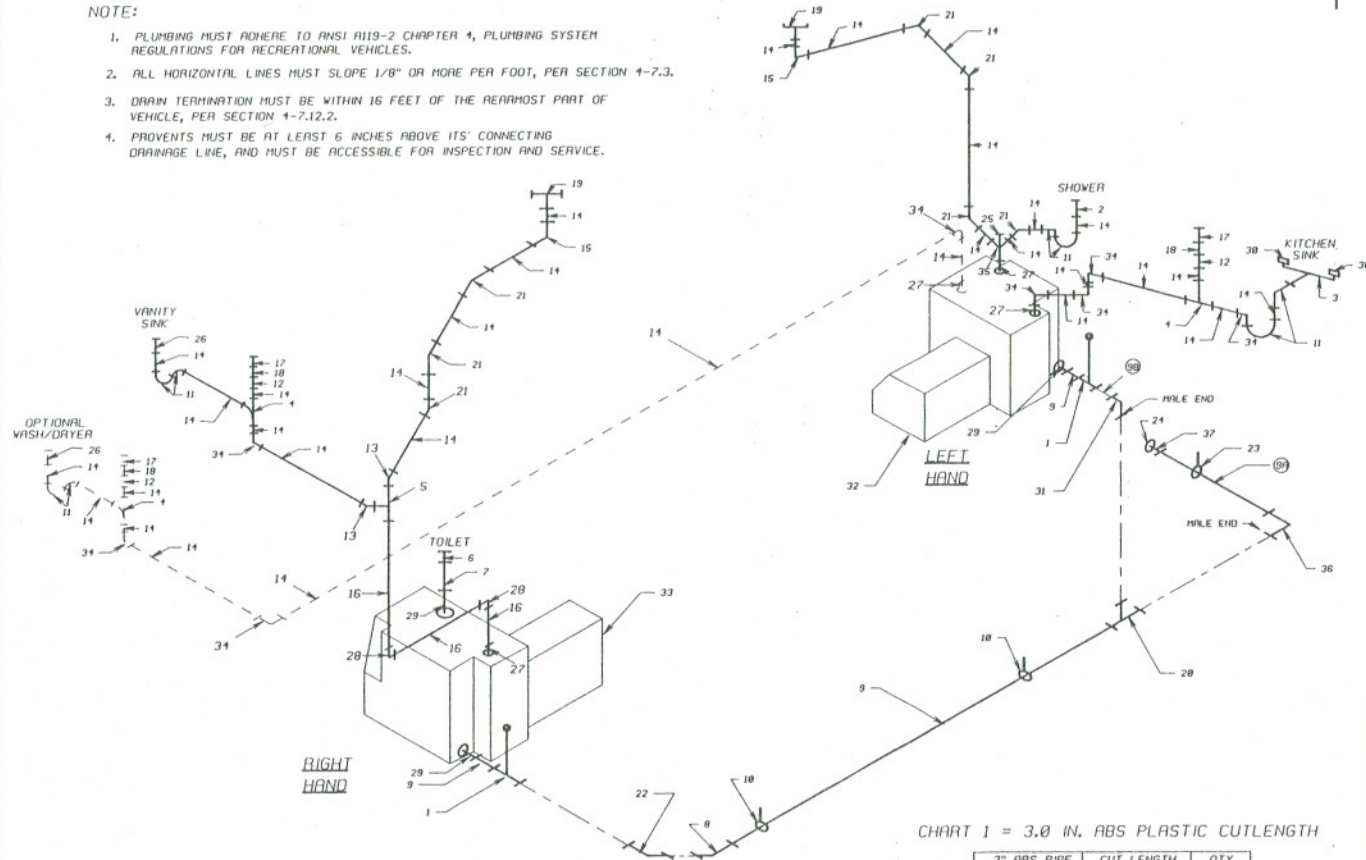


CHART 1 = 3.0 IN. ABS PLASTIC CUTLENGTH

3" ABS PIPE	CUT LENGTH	QTY.
9A	22.00"	1
9B	1.00"	1

ITEM	PART NUMBER	DESCRIPTION	QTY. REQ'D	QTY. IN STOCK
1	384778	VALVE, POWER DUMP	2	1
2	683686	DRAIN, SHOWER, 1-1/2", BRASS	1	
3	683682	DRAIN, SHOWER, 1-1/2", CHROME	1	
4	3796398	CONTINUOUS WASTE, CENTER OUTLET, 21 IN.	1	
5	817638	TEE, SANITARY, ABS, 1.5"	2	+1
6	854894	TEE, SANITARY, ABS, 3" X 1.5" X 1.5"	1	
7	201728	FLANGE, CLOSET, 3 FTY	1	
8	2200588	NIPPLE, 1/2 X 3 X 10	1	
9	2246543	ELBOW, ABS, 3" X 22.5 DEG	1	
10	2193453	PIPE, ABS, 3" X 20 FT, PIONEER BRAND	11 FT	
11	2258358	BRACE, HTG, DRAINAGE	2	
12	2193952	TAP, FT, ABS, 3/4" DOUBLE SEAL UNION, 1.5"	3	+1
13	224449	CONJUG, ABS, 1.5"	3	+1
14	3866843	ELBOW, STREET, ABS, 1.5 X 45 DEGREE	5	
15	201733	PIPE, ABS, 1.5" X 20 FT, PIONEER BRAND	32 FT +15 FT	
16	2258358	ELBOW, ABS, 1.5" X 90 DEG, VENT	2	
17	201737	PIPE, ABS, 3" X 20 FT, PIONEER BRAND	2 FT	
18	2221588	VENT, CHECK, NO. 148	2	+1
19	2221554	ADAPTER, CLEANOUT, ABS, 1.5"	2	+1
20	3818988	VENT, ROOF, VAC-U-JET, ROYAL SILVER	2	+1
21	2235288	TEE, SANITARY, ABS, 3"	1	
22	2017499	ELBOW, ABS, 1.5" X 45 DEG	1	
23	375189	ELBOW, STREET, ABS, 3" X 90 DEG	1	
24	682117	BRACE, HTG, DRAINAGE LINE, FINAL WLWB	1	
25	2198783	CAP & CHAIN, ABS, DUMP VALVE	1	
26	6818158	FLUG, ABS, 2 INCH, NIBCO SB26 X 2	1	
27	3741549	ADAPTER, TAP, FEMALE W/ WASH NUT 1-1/2 X 1-1/4	1	+1
28	2281453	CLAMP, 2 IN, WATER HOSE	3	+1
29	2258881	ELBOW, ABS, 3" X 90 DEG, LONG TURN	2	
30	2268159	CLAMP, HOIST, 4 IN, ABS	1	
30A	449363	STRAINER, SINK, KITCHEN, KOHLER, BRASS	3	
30B	3889889	STRAINER, SINK, KITCHEN, KOHLER, CHROME	2	
30C	3758745	STRAINER, SINK, KITCHEN, KOHLER, CHROME	1	
31	6822888	ELBOW, STREET, ABS, 3" X 45 DEG	1	
32	394849	TANK, HOLDING, LH, 91 WB	1	
33	394831	TANK, HOLDING, RH, 91 WB	1	
34	2258358	ELBOW, ABS, 1.5" X 90 DEG, LONG TURN	5	+3
35	6836888	WYE, ABS, REDUCING, 1.5" X 1.5" X 2"	1	
36	2258812	ELBOW, STREET, ABS, 3" X 90 DEG, LONG TURN	1	
37	2198711	ADAPTER, BAYONET, DUMP VALVE	1	

SAVED IN C:\DRAWING @ 1/11 SCALE.

MATERIAL:				
FLAT SIZE:				
FINISH	COLOR OR TYPE	LET	REVISIONS	DL, APP, CK, ECH, DATE
RAW <input type="checkbox"/>	PAINT <input type="checkbox"/>	8471	Blue Bird Wonder Lodge	SCALE
PRIME <input type="checkbox"/>	PLATING <input type="checkbox"/>		OPTION 5989, PLUMBING DRAINAGE, WALK-THRU BATH	NONE
	OTHER <input type="checkbox"/>			
TOLERANCES ON ALL DIMENSIONS IS PLUS				
OR MINUS	UNLESS OTHERWISE SPECIFIED.			
PARTICIPATES NO	6024327	PL 10/7/92 BY RW	SUE	6046262
REPLACED BY NO		APP. 10/7/92 BY RW	C	