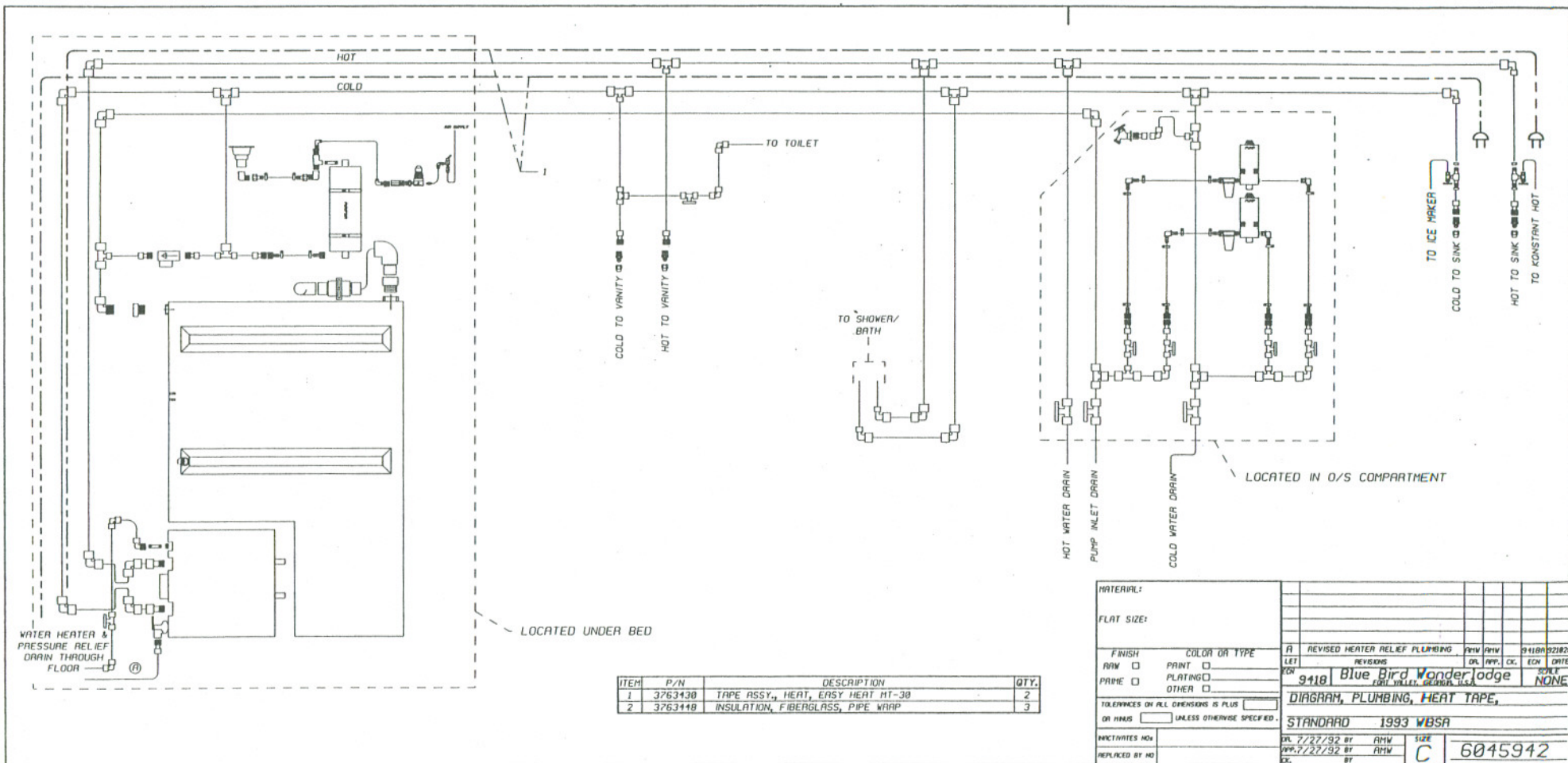
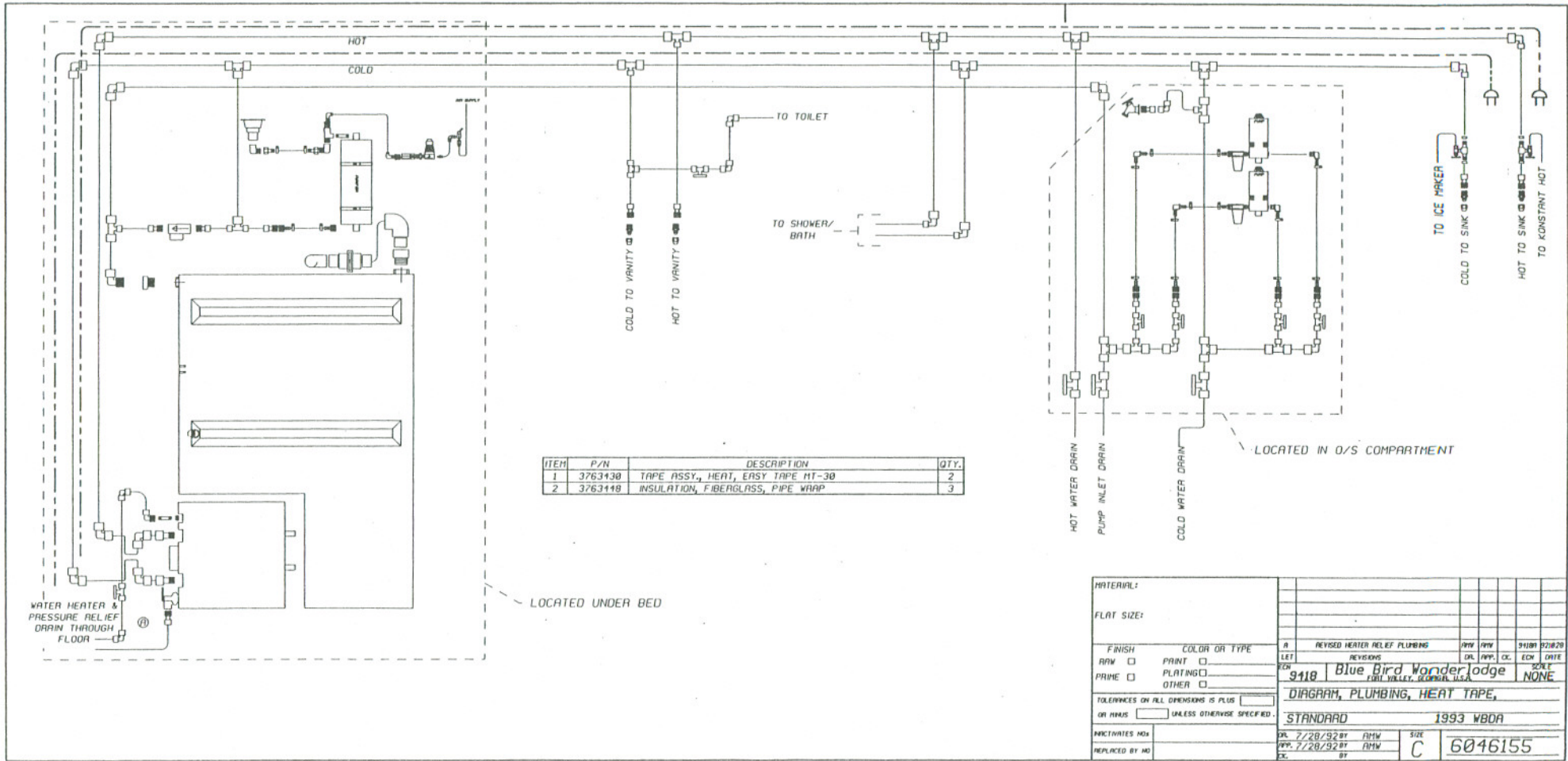


ITEM	P/N	DESCRIPTION	QTY.
1	3763130	TAPE ASSY., HEAT, EASY HEAT MT-30	1
2	3763118	INSULATION, FIBERGLASS, PIPE WRAP	6

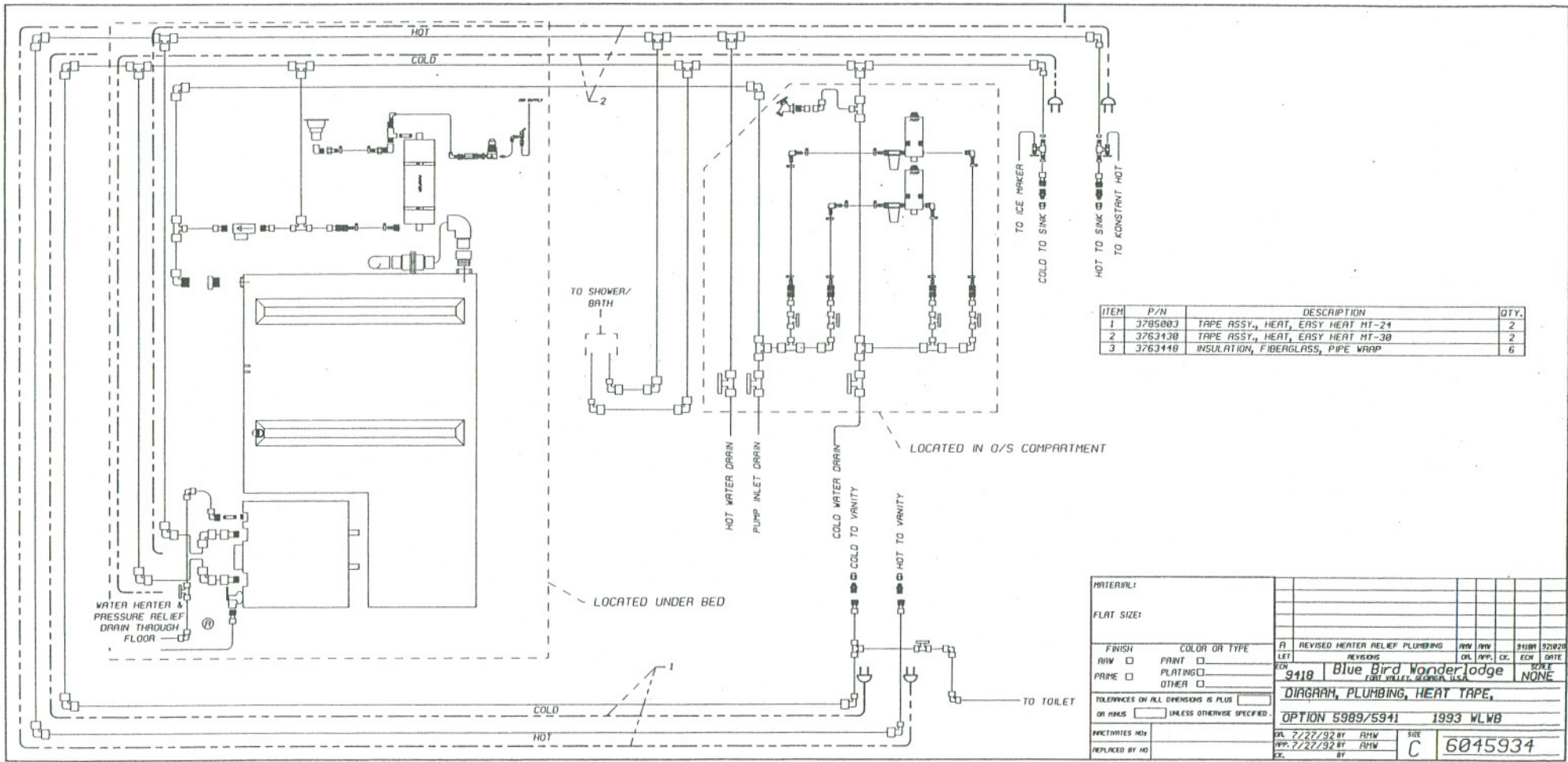
MATERIAL:									
FLAT SIZE:									
FINISH	COLOR OR TYPE	A REVISED HTR. REDEF. PLUMBING							
RAW <input type="checkbox"/>	PAINT <input type="checkbox"/>	LET	REVISIONS	DR.	APP.	CK.	ECN	DATE	
PRIME <input type="checkbox"/>	PLATING <input type="checkbox"/>	9118	Blue Bird Wanderlodge						NONE
	OTHER <input type="checkbox"/>	EAST VALLEY, GEORGIA, USA							
TOLERANCES ON ALL DIMENSIONS IS PLUS		DIAGRAM, PLUMBING, HEAT TAPE,							
OR MINUS <input type="checkbox"/> UNLESS OTHERWISE SPECIFIED.		STANDARD 1993 WLWB							
INDICATES HDN	C31157	7/28/92	BY	AWM	SIXE				
REPLACED BY NO		7/28/92	BY	AWM	C	6045959			



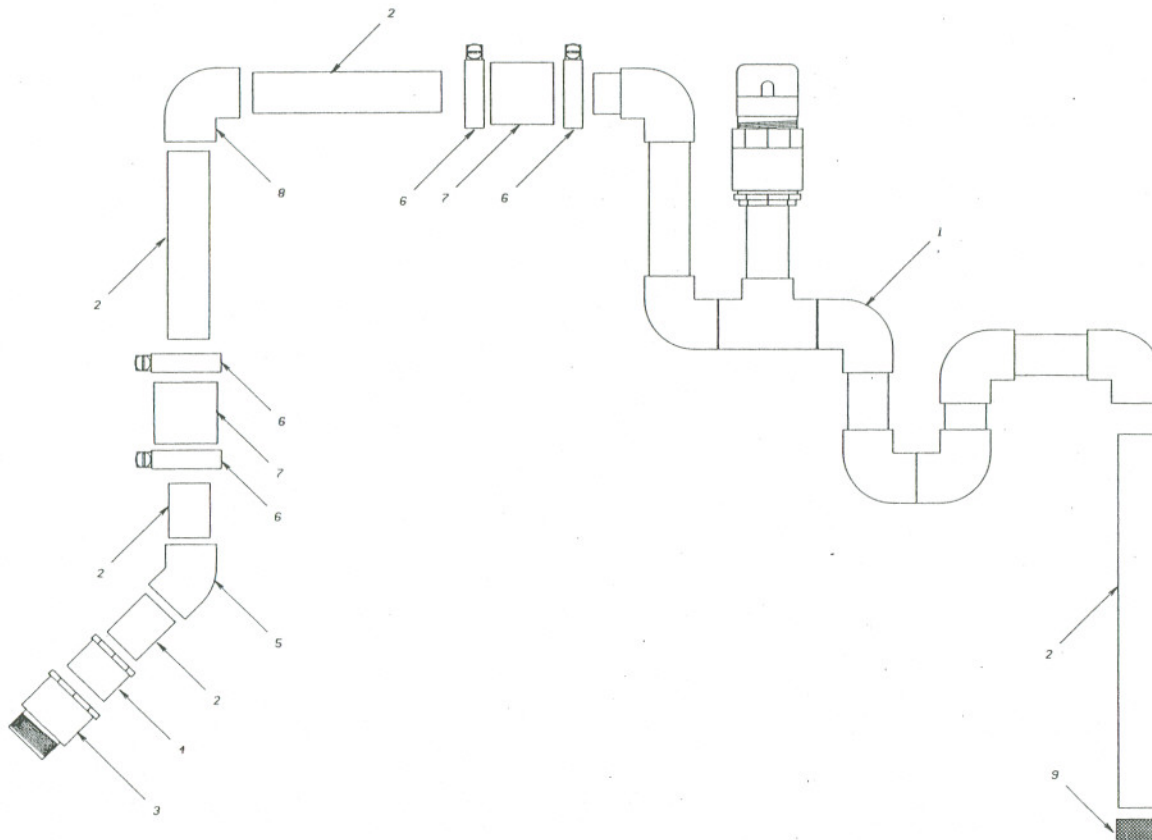


ITEM	P/N	DESCRIPTION	QTY.
1	3763138	TAPE ASSY, HEAT, EASY TAPE RT-30	2
2	3763148	INSULATION, FIBERGLASS, PIPE WRAP	3

MATERIAL:									
FLAT SIZE:									
FINISH	COLOR OR TYPE	A	REVISED HEATER RELIEF PLUMBING	AMW	AMW	5/1/81	9/2/82		
ARM <input type="checkbox"/>	PAIN <input type="checkbox"/>	LET	REVISIONS	DAL	APP.	CC.	ECM	DATE	
PAVE <input type="checkbox"/>	PLATING <input type="checkbox"/>	9118 Blue Bird Wonder Lodge		FBI VALLEY, COPIED, U.S.A.		SCALE		NONE	
OTHER <input type="checkbox"/>		DIAGRAM, PLUMBING, HEAT TAPE,							
TOLERANCES ON ALL DIMENSIONS IS PLUS		STANDARD 1993 WBD							
OR PLUS <input type="checkbox"/>	UNLESS OTHERWISE SPECIFIED.	DAL 7/28/92 BY AMW		APP. 7/28/92 BY AMW		SIZE		C 6046155	
INDICATES NOS		REPLACED BY NO		BY					

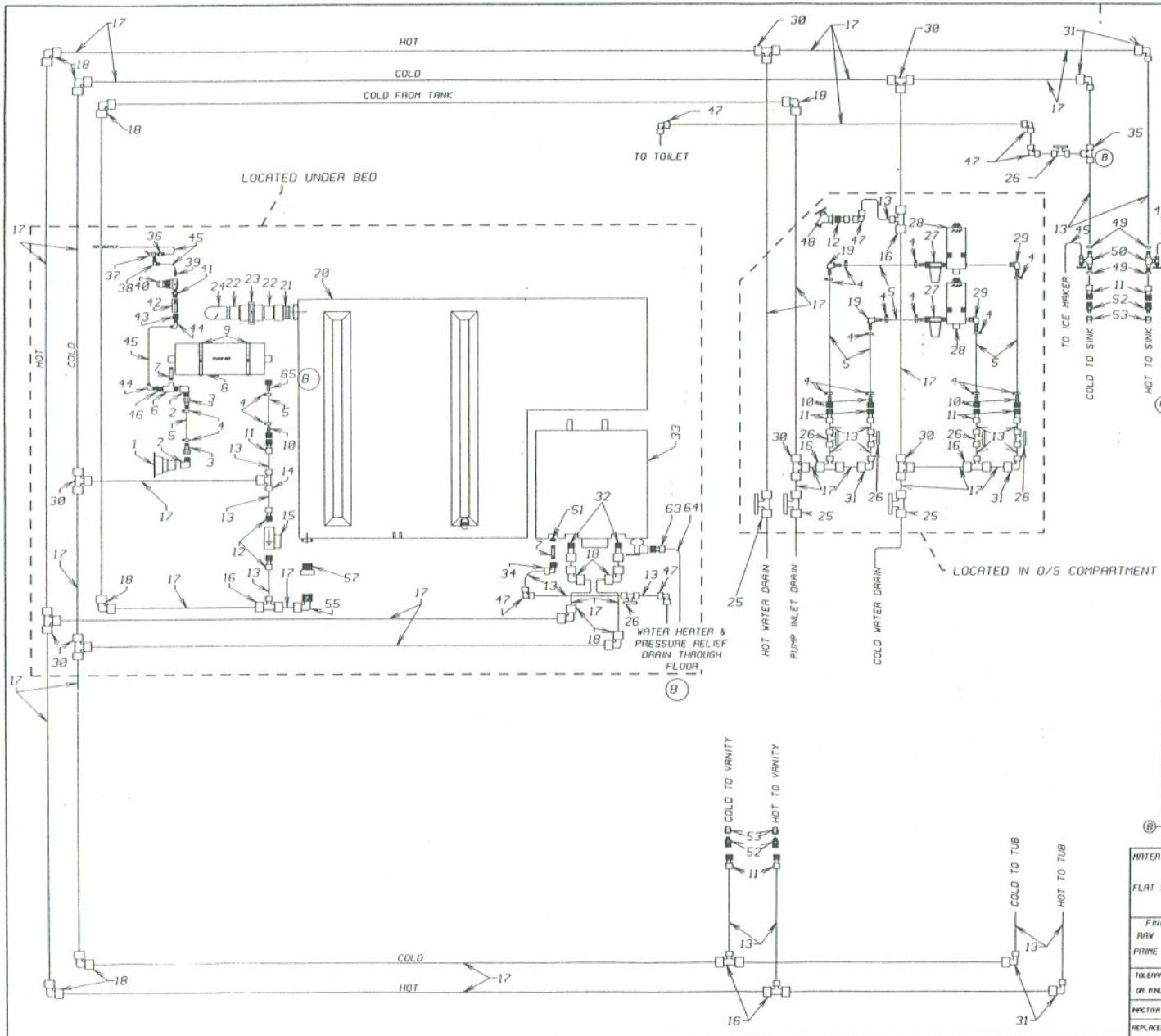


MATERIAL:									
FLAT SIZE:									
FINISH	COLOR OR TYPE	A	REVISED HEATER RELIEF PLUMBING	AW	AW	9100	92020		
AW	PAINT	LET	REVISIONS	DL	APP.	CK.	ECN	DATE	
PAPE	PLATING	9410	Blue Bird Wonder Lodge					SCALE	NONE
	OTHER		EDGE VALLEY, PENNSYLVANIA, U.S.A.						
TOLERANCES ON ALL DIMENSIONS IS PLUS		DIAGRAM, PLUMBING, HEAT TAPE,							
OR MINUS UNLESS OTHERWISE SPECIFIED.		OPTION 5989/5941		1993 WLWB					
INDICATES MD		DL	7/22/92 BY	AW	SIZE				
REPLACED BY MD		APP.	7/22/92 BY	AW	C	6045934			
		CK.		BY					



NO.	P/N	DESCRIPTION	QTY.
1.	6045355	OVERFLOW & VENT ASSY., FRESH WATER TANK	93 WB 1
2.	6045348	PIPE, PVC, 1 INCH, 20 FEET LONG	5'
3.	6045322	ADAPTER, PVC, 1 1/4MPT - 1 1/4 SLIP	1
4.	6045330	BUSHING, PVC, 1 1/4 - 1 SLIP	1
5.	6045314	ELBOW, PVC, 1 INCH, 45 DEGREE	1
(n) 6.	2008522	CLAMP, HOSE, 1 INCH	4
7.	6045413	TUBING, CLEAR VINYL, 1 1/4 ID X 1 7/16 OD	8"
8.	6045306	ELBOW, PVC, 1 INCH, 90 DEGREE	1
(n) 9.	3844308	SCREEN, WIRE	2"X2"
N.L. 10.	2253425	CEMENT, ALL PURPOSE ABS-PVC	.25

MATERIAL:									
FLAT SIZE:									
FINISH	COLOR OR TYPE	A		A1 WAS 38318721 A2 WAS 2246009		AWH	AWH	9418	2/22/92
RAW <input type="checkbox"/>	PAINT <input type="checkbox"/>	LET	REVISES	DR.	APP.	CC.	ECH	DATE	
PAVE <input type="checkbox"/>	PLATING <input type="checkbox"/>	9418		Blue Bird Wanderlodge		SCALE		NTS	
	OTHER <input type="checkbox"/>			FORT VALLEY, GEORGIA, U.S.A.					
TOLERANCES ON ALL DIMENSIONS IS PLUS		DIAGRAM ASSY., OVERFLOW & VENT,							
ON PINS <input type="checkbox"/> UNLESS OTHERWISE SPECIFIED.		FRESH WATER TANK 1993 WLWB							
DATE	BY	SIZE	C 6045405						
REV. 6/3/92	BY AWH								
REPLACED BY NO.									



ITEM	P/N	DESCRIPTION	QTY.
1	3959722	REGULATOR, CITY WATER FILL, VPM	1
2	2233930	ELL, STREET, 1/2 NPT BRASS NO. 310	2
3	3004020	CONNECTOR, 1/2 NPT, 90 DEG, BRASS	2
4	2027571	CLAMP, HOSE, 6203	16
5	2255933	HOSE, WATER PUMP, 1/2 INCH	8'
6	0522516	TEE, STREET, 0.50" PIPE, BRASS	1
7	3750554	NIPPLE, PIPE, 1/2 X 2 L.G. BRASS	2
8	3001255	PURIFIER, WATER, MODEL 7550	1
9	2000555	CLAMP, UNIVERSAL HOSE, 18 INCH	2
10	6042065	ADAPTER, STRAIGHT, 1/2 HOSE BARB-1/2 MPT	6
11	6042016	ADAPTER, SWIVEL, STRAIGHT, 1/2P-1/2FPT, FL 02073(A)	9
12	6042024	ADAPTER, STRAIGHT, 1/2P-1/2MPT, FLAIR-IT 02012	3
13	3710065	TUBING, 0.50 ID, POLYBUTYLENE	19'
14	6042766	TEE, 1/2-1/2-3/4 POLY, FLAIR-IT 02023	1
15	2251122	VALVE, SOLINOID, CUT-OFF	1
16	6042759	TEE, 3/4-3/4-1/2 POLY, FLAIR-IT 02026	5
17	6021653	TUBING, POLYBUTYLENE, 3/4 ID	130'
18	6042702	ELBOW, 3/4 POLY, FLAIR-IT 02006	11
19	6041077	ELBOW, 1/2 HOSE BARB, 90 DEGREE	2
20	6041966	TANK, FRESH WATER, QUEEN & CROSS ISLAND 1993 WLWB	1
21	6042099	ADAPTER, 2 INCH PVC-2 INCH MPT, NIBCO 1004	1
22	6042907	PIPE, PVC, 2 INCH X 20 FT.	0'
23	4105001	VALVE, DUMP, 2 INCH PVC	1
24	6042923	ELBOW, 2 INCH PVC, NIBCO 1007	1
25	6042040	VALVE, STRAIGHT STOP, 1/2 POLY, FLAIR-IT 02001	3
26	6042032	VALVE, STRAIGHT STOP, 1/2 POLY, FLAIR-IT 02000	6
27	6021356	STRAINER, WATER PUMP, FLOJET, QUAD X 1/2 HOSE BARB	2
28	6021349	PUMP, WATER, 3.3 GPM, FLOJET 1406-143J	2
29	6041069	KIT, PORT, WATER PUMP, FLOJET 20301-009, 90 ELBOW	1 SET
30	6042741	TEE, 3/4 POLY, FLAIR-IT 02027	7
31	6042790	ELBOW, 1/2-3/4, FLAIR-IT 02005	6
32	6042001	ADAPTER, STRAIGHT, 3/4P-1/2MPT, FLAIR-IT 02057	2
33	6041119	HEATER, WATER, ELECTRIC W/ENGINE AID & 3/4 DRAIN	1
34	6042000	ELBOW, SWIVEL, 1/2P-1/2FPT SW, FLAIR-IT 02016 (A3)	1
35	6042733	TEE, 1/2 POLY, FLAIR-IT 02020	1
36	3027250	CONNECTOR, MALE, 10-32 UNF X 1/4 TUBE	1
37	2227330	VALVE, AIR, TV-35	1
38	3027326	ELBOW, MALE SWIVEL, 90, 10/32 UNF X 1/4 TUBE	1
39	3027227	CONNECTOR, MALE, 1/4 NPT X 1/4 TUBE	1
40	3747730	REGULATOR, AIR, 1/4 INCH FPT	1
41	2245199	NIPPLE, HEX, 1/4 NPT X 3/8 MPT	1
42	3005215	VALVE, CHECK, AIR COMPRESSOR	1
43	2027134	BUSHING, PIPE, 3/8 X 1/4	1
44	3027367	ELBOW, MALE, 90DEGREE, 1/4 NPT X 1/4 TUBE	2
45	2216463	TUBING, HYTRON, 1/4 OD X 0.010 WALL	5FT.
46	2027159	BUSHING, PIPE, 1/2 X 1/4	1
47	6042774	ELBOW, 1/2 POLY, FLAIR-IT 02000	6
48	371915	SILLOCK, 1/2 FPT, BRASS, 90BTJ	1
49	3779592	SLEEVE, CRAMPING, 1/2 BARB, P0095	1
50	3941127	VALVE, CUT-OFF, POLY, 1/2 BARB, STREET	2
51	3020693	BUSHING, 3/4 X 1/2 PIPE, BRASS	1
52	2257097	CONNECTOR, 0.375FL X 0.50MPT, BRASS	1
53	2027076	NUT, 1110 X 6 3/8, FLARE	4
54	2253425	CEMENT, ALL PURPOSE, ABS-PVC	0.25
55	6041093	ELBOW, 3/4 POLY-3/4 MPT, FLAIR-IT 02009	1
56	6041001	BOARD, MTG., PUMPS, F/W PLUMBING 1993 WLWB	1
57	6021695	BUSHING, BRASS, 1-1/4 MPT X 3/4 FPT	1
58	6045405	DIAGRAM ASSY., OVERFLOW & VENT, F/W TANK 93 WB	1
59	6045736	BRACKET, MTG., FAUCET, O/S COMPARTMENT 93 WB	1
60	6045744	BREAKER, VACUUM, O/S FAUCET, BRASS, 100-904	1
61	6045397	BOARD, MTG., PURIFIER 1993 WLWB	1
62	3044300	WIRE, SCREEN, ALUM., 32 IN WIDE X 100 FT	1'X4'
63	6046710	ADAPTER, 3/4 COPPER - 1/2 MPT, 6041R	1
64	6046025	TUBING, COPPER, 3/4L SOFT COPPER	2'
65	2216125	ADAPTER, BRASS, 1/2 MPT X 1/2 BARB	1

MATERIAL:

FLAT SIZE:

FINISH: COLOR OR TYPE
 PAINT
 PLATING
 PRIME
 OTHER

TOLERANCES ON ALL DIMENSIONS IS PLUS UNLESS OTHERWISE SPECIFIED.

ACTIVATES FOR: 6024236

REPLACED BY NO:

REVISED TOILET SHUT-OFF **REVISED HEATER RELIEF PLUMB.** **REVISED CONN. AT PURIFIER**

A **A1** WAS 6042915; **A2** WAS 02043 **A3** WAS 02004

LET REVISIONS **DR.** **APP.** **CK.** **CON.** **DATE**

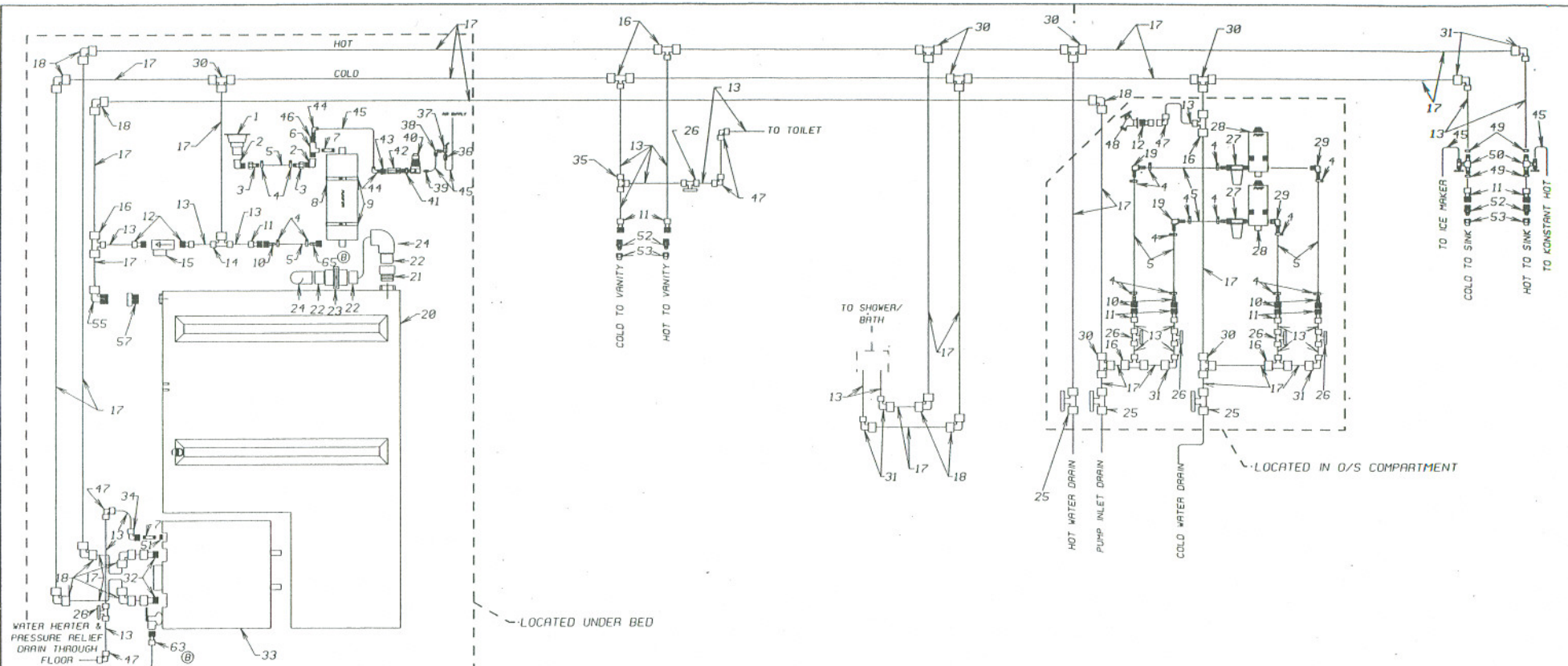
9410 **Blue Bird Wonder Lodge** **SOLE** **NONE**

DIAGRAM ASSY., PLUMBING, FRESH WATER,

STANDARD **1993 WLWB**

VAL 5/15/92 BY **AWH** **SIZE** **6045132**

APP 5/15/92 BY **AWH** **BY**



ITEM	P/N	DESCRIPTION	QTY.	ITEM	P/N	DESCRIPTION	QTY.	ITEM	P/N	DESCRIPTION	QTY.
1	3959772	REGULATOR, CITY WATER FILL, VPM	1	27	6021356	STRAINER, WATER PUMP, FLOJET, QUAD X 1/2 HOSE BARB	2	53	2027076	NUT, 1110 X 6 3/8, FLARE	1
2	2233930	ELL, STREET, 1/2 NPT BRASS NO. 340	2	28	6021349	PUMP, WATER, 3.3 GPM, FLOJET 1406-143J	2	54	2253425	CEMENT, ALL PURPOSE, ABS-PVC	0.25
3	3804820	CONNECTOR, 1/2 NPT, 90 DEG, BRASS	2	29	6041069	KIT, PORT, WATER PUMP, FLOJET 20381-009, 90 ELBOW	1	55	6041093	ELBOW, 3/4 POLY-3/4 MPT, FLAIR-IT 02809	1
4	2027571	CLAMP, HOSE, 6203	16	30	6042741	TEE, 3/4 POLY, FLAIR-IT 02827	7	56	6044101	BOARD, MTG, PUMPS, F/W PLUMBING 1993 WLWB	1
5	2255933	HOSE, WATER PUMP, 1/2 INCH	8'	31	6042790	ELBOW, 1/2-3/4, FLAIR-IT 02805	6	57	6021695	BUSHING, BRASS, 1-1/4 MPT X 3/4 FPT	1
6	0522516	TEE, STREET, 0.50" PIPE, BRASS	1	32	6042801	ADAPTER, STRAIGHT, 3/4P-1/2MPT, FLAIR-IT 02857	2	58	6045405	DIAGRAM ASSY., OVERFLOW & VENT, F/W TANK 93 WB	1
7	3758554	NIPPLE, PIPE, 1/2 X 2 LG, BRASS	2	33	6041119	HEATER, WATER, ELECTRIC W/ENGINE AID & 3/4 DRAIN	1	59	6045736	BRACKET, MTG, FAUCET, O/S COMPARTMENT 93 WB	1
8	3801255	PURIFIER, WATER, MODEL 7550	1	34	6042800	ELBOW, SWIVEL, 1/2P-1/2FPT SW, FLAIR-IT 02816	1	60	6045744	BREAKER, VACUUM, O/S FAUCET, BRASS, 100-904	1
9	2008555	CLAMP, UNIVERSAL HOSE, 18 INCH	2	35	6042733	TEE, 1/2 POLY, FLAIR-IT 02820	1	61	6045397	BOARD, MTG, PURIFIER 1993 WLWB	1
10	6042865	ADAPTER, STRAIGHT, 1/2 HOSE BARB-1/2 MPT	5	36	3827250	CONNECTOR, MALE, 10-32 UNF X 1/4 TUBE	1	62	3814388	WIRE, SCREEN, ALUM, 32 IN WIDE X 100 FT	1*
11	6042816	ADAPTER, SWIVEL, STRAIGHT, 1/2P-1/2FPT, FL 02873(A2)	9	37	2227338	VALVE, AIR, TV-35	1	63	6046710	ADAPTER, 3/4 COPPER - 1/2 MPT, 601A	1
12	6042824	ADAPTER, STRAIGHT, 1/2P-1/2MPT, FLAIR-IT 02842	3	38	3827326	ELBOW, MALE SWIVEL, 90, 10/32 UNF X 1/4 TUBE	1	64	6046825	TUBING, COPPER, 3/4L SOFT COPPER	2'
13	3741865	TUBING, 0.50 ID, POLYBUTYLENE	19'	39	3827227	CONNECTOR, MALE, 1/4 NPT X 1/4 TUBE	1	65	2216125	ADAPTER, BRASS, 1/2 MPT X 1/2 BARB	1
14	6042766	TEE, 1/2-1/2-3/4 POLY, FLAIR-IT 02823	1	40	3747730	REGULATOR, AIR, 1/4 INCH FPT	1				
15	2251122	VALVE, SOLINOID, CUT-OFF	1	41	2245199	NIPPLE, HEX, 1/4 MPT X 3/8 MPT	1				
16	6042758	TEE, 3/4-3/4-1/2 POLY, FLAIR-IT 02826	6	42	3805215	VALVE, CHECK, AIR COMPRESSOR	1				
17	6021653	TUBING, POLYBUTYLENE, 3/4 ID	100'	43	2027134	BUSHING, PIPE, 3/8 X 1/4	1				
18	6042782	ELBOW, 3/4 POLY, FLAIR-IT 02806	10	44	3827367	ELBOW, MALE, 90DEGREE, 1/4 NPTF X 1/4 TUBE	1				
19	6044077	FLAW, 1/2 HOSE BARB, 90 DEGREE	2	45	2216463	TUBING, HYDRAU, 1/4 OD X 0.040 WALL	SFT.				
20	6041966	TANK, FRESH WATER, QUEEN & CROSS ISLAND 1993 WLWB	1	46	2027159	BUSHING, PIPE, 1/2 X 1/4	1				
21	6042899	ADAPTER, 2 INCH PVC-2 INCH MPT, NIBCO 1804	1	47	6042774	ELBOW, 1/2 POLY, FLAIR-IT 02800	1				
22	6042907	PIPE, PVC, 2 INCH X 20 FT.	2'	48	3741915	SILCOCK, 1/2 FPT, BRASS, 9061J	1				
23	4405001	PIPE, PVC, 2 INCH X 20 FT.	1	49	3779592	SLEEVE, CRAMPING, 1/2 BARB, PB095	1				
24	6042923	ELBOW, 2 INCH PVC, NIBCO 1807	2	50	3941127	VALVE, CUT-OFF, POLY, 1/2 BARB, STREET	2				
25	6042840	VALVE, STRAIGHT STOP, 1/2 POLY, FLAIR-IT 02801	3	51	3820693	BUSHING, 3/4 X 1/2 PIPE, BRASS	1				
26	6042832	VALVE, STRAIGHT STOP, 1/2 POLY, FLAIR-IT 02800	6	52	2257897	CONNECTOR, 0.375FL X 0.50MPT, BRASS	4				

FINISH COLOR OR TYPE
 RAW PAINT
 PRIME PLATING
 OTHER

TOLERANCES ON ALL DIMENSIONS IS PLUS UNLESS OTHERWISE SPECIFIED.

OR HANG UNLESS OTHERWISE SPECIFIED.

INSTRUMENTS NO. 6021570
 REPLACED BY NO.

REVISED HTR. RELIEF PLUMBING & CONNECTION AT PURIFIER OUTPUT	AWW	AWW	3/10/91/92
A R1 WAS 6042915; R2 WAS 02843;	AWW	AWW	3/10/0/92
A3 WAS 02804			

REVISIONS

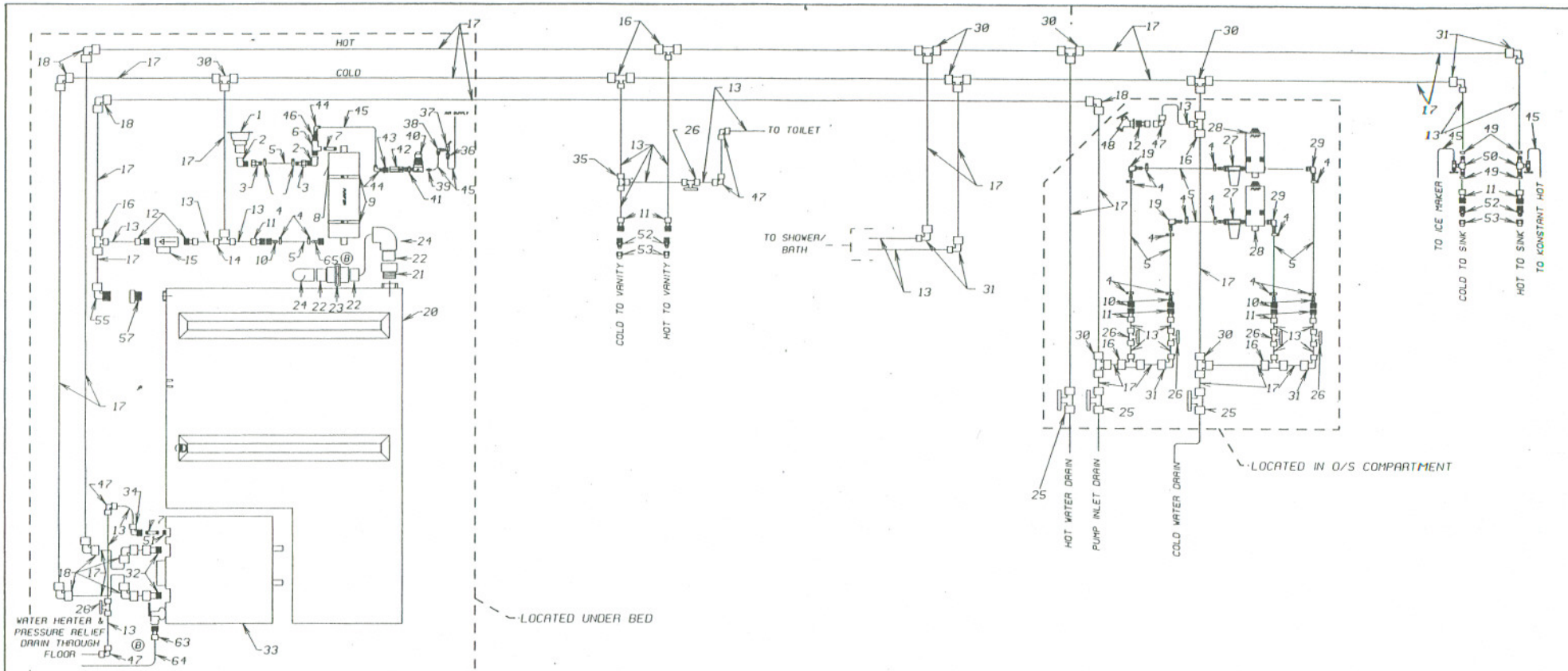
9118 Blue Bird Wonder Lodge

DIAGRAM ASSY., PLUMBING, FRESH WATER,

STANDARD 1993 WBSA

AWW 5/22/92 BY AWW
 AWW 7/22/92 BY AWW

6045256



ITEM	P/N	DESCRIPTION	QTY.	ITEM	P/N	DESCRIPTION	QTY.	ITEM	P/N	DESCRIPTION	QTY.
1	3953772	REGULATOR, CITY WATER FILL, VPM	1	27	6021356	STRAINER, WATER PUMP, FLOJET, QUAD X 1/2 HOSE BARB	2	53	2027076	NUT, 1110 X 6 3/8, FLARE	4
2	2233930	ELL, STREET, 1/2 NPT BRASS NO. 340	2	28	6021319	PUMP, WATER, 3.3 GPM, FLOJET 1406-143J	2	54	2253425	CEMENT, ALL PURPOSE, ABS-PVC	0.25
3	3804920	CONNECTOR, 1/2 NPT, 90 DEG, BRASS	2	29	6044069	KIT, PORT, WATER PUMP, FLOJET 203BI-003, 90 ELBOW	1	55	6044093	ELBOW, 3/4 POLY-3/4 MPT, FLAIR-IT 02809	1
4	2027571	CLAMP, HOSE, 6203	16	30	6042741	TEE, 3/4 POLY, FLAIR-IT 02827	7	56	6044101	BOARD, MTG., PUMPS, F/W PLUMBING 1993 WLWB	1
5	2255933	HOSE, WATER PUMP, 1/2 INCH	8'	31	6042790	ELBOW, 1/2-3/4, FLAIR-IT 02805	6	57	6021695	BUSHING, BRASS, 1-1/4 MPT X 3/4 FPT	1
6	0522516	TEE, STREET, 0.50" PIPE, BRASS	1	32	6042881	ADAPTER, STRAIGHT, 3/4P-1/2MPT, FLAIR-IT 02857	2	58	6045405	DIAPHRAM ASSY., OVERFLOW & VENT, F/W TANK 93 WB	1
7	3758554	NIPPLE, PIPE, 1/2 X 2 LG, BRASS	2	33	6044119	HEATER, WATER, ELECTRIC V/ENGINE AID & 3/4 DRAIN	1	59	6045736	BRACKET, MTG., FAUCET, O/S COMPARTMENT 93 WB	1
8	3601255	PURIFIER, WATER, MODEL 7550	1	34	6042800	ELBOW, SWIVEL, 1/2P-1/2FPT SW, FLAIR-IT 02816 (A)	1	60	6045744	BREAKER, VACUUM, O/S FAUCET, BRASS, 100-904	1
9	2008555	CLAMP, UNIVERSAL HOSE, 1/2 INCH	2	35	6042733	TEE, 1/2 POLY, FLAIR-IT 02820	1	61	6045397	BOARD, MTG., PURIFIER 1993 WLWB	1
10	6042865	ADAPTER, STRAIGHT, 1/2 HOSE BARB-1/2 MPT	5	36	3827250	CONNECTOR, MALE, 10-32 UNF X 1/4 TUBE	1	62	3844388	WIRE, SCREEN, ALUM., 32 IN WIDE X 100 FT	4'X4'
11	6042816	ADAPTER, SWIVEL, STRAIGHT, 1/2P-1/2FPT, FL 02873 (A2)	9	37	2227338	VALVE, AIR, TV-35	1	63	6046718	ADAPTER, 3/4 COPPER - 1/2 MPT, 604R	2'
12	6042824	ADAPTER, STRAIGHT, 1/2P-1/2MPT, FLAIR-IT 02842	3	38	3827326	ELBOW, MALE SWIVEL, 90, 10/32 UNF X 1/4 TUBE	1	64	6046025	TUBING, COPPER, 3/4L SOFT COPPER	1
13	3741865	TUBING, 0.50 ID, POLYBUTYLENE	19'	39	3827227	CONNECTOR, MALE, 1/4 NPT X 1/4 TUBE	1	65	2216125	ADAPTER, BRASS, 1/2 MPT X 1/2 BARB	1
14	6042766	TEE, 1/2-1/2-3/4 POLY, FLAIR-IT 02823	1	40	3747730	REGULATOR, AIR, 1/4 INCH FPT	1				
15	2251122	VALVE, SOLINOID, CUT-OFF	1	41	2245199	NIPPLE, HEX, 1/4 MPT X 3/8 MPT	1				
16	6042758	TEE, 3/4-3/4-1/2 POLY, FLAIR-IT 02826	6	42	3805215	VALVE, CHECK, AIR COMPRESSOR	1				
17	6021653	TUBING, POLYBUTYLENE, 3/4 ID	100'	43	2027134	BUSHING, PIPE, 3/8 X 1/4	1				
18	6042782	ELBOW, 3/4 POLY, FLAIR-IT 02806	8	44	3827367	ELBOW, MALE, 90DEGREE, 1/4 NPTF X 1/4 TUBE	2				
19	6044077	ELBOW, 1/2 HOSE BARB, 90 DEGREE	2	45	2216463	TUBING, HYTRON, 1/4 OD X 0.010 WALL	1				
20	6041966	TANK, FRESH WATER, QUEEN & CROSS ISLAND 1993 WLWB	1	46	2027159	BUSHING, PIPE, 1/2 X 1/4	1				
21	6042899	ADAPTER, 2 INCH PVC-2 INCH MPT, NIBCO 1001	1	47	6042774	ELBOW, 1/2 POLY, FLAIR-IT 02800	5				
22	6042907	PIPE, PVC, 2 INCH X 20 FT.	2'	48	3741915	SILLCOCK, 1/2 FPT, BRASS, 9061J	1				
23	4458001	VALVE, DUMP, 2 INCH PVC	1	49	379592	SLEEVE, CRIMPING, 1/2 BARB, P089S	4				
24	6042923	ELBOW, 2 INCH PVC, NIBCO 1007	2	50	3941127	VALVE, CUT-OFF, POLY, 1/2 BARB, STREET	2				
25	6042840	VALVE, STRAIGHT STOP, 1/2 POLY, FLAIR-IT 02801	3	51	3820693	BUSHING, 3/4 X 1/2 PIPE, BRASS	1				
26	6042832	VALVE, STRAIGHT STOP, 1/2 POLY, FLAIR-IT 02800	6	52	2257897	CONNECTOR, 0.375FL X 0.50MPT, BRASS	4				

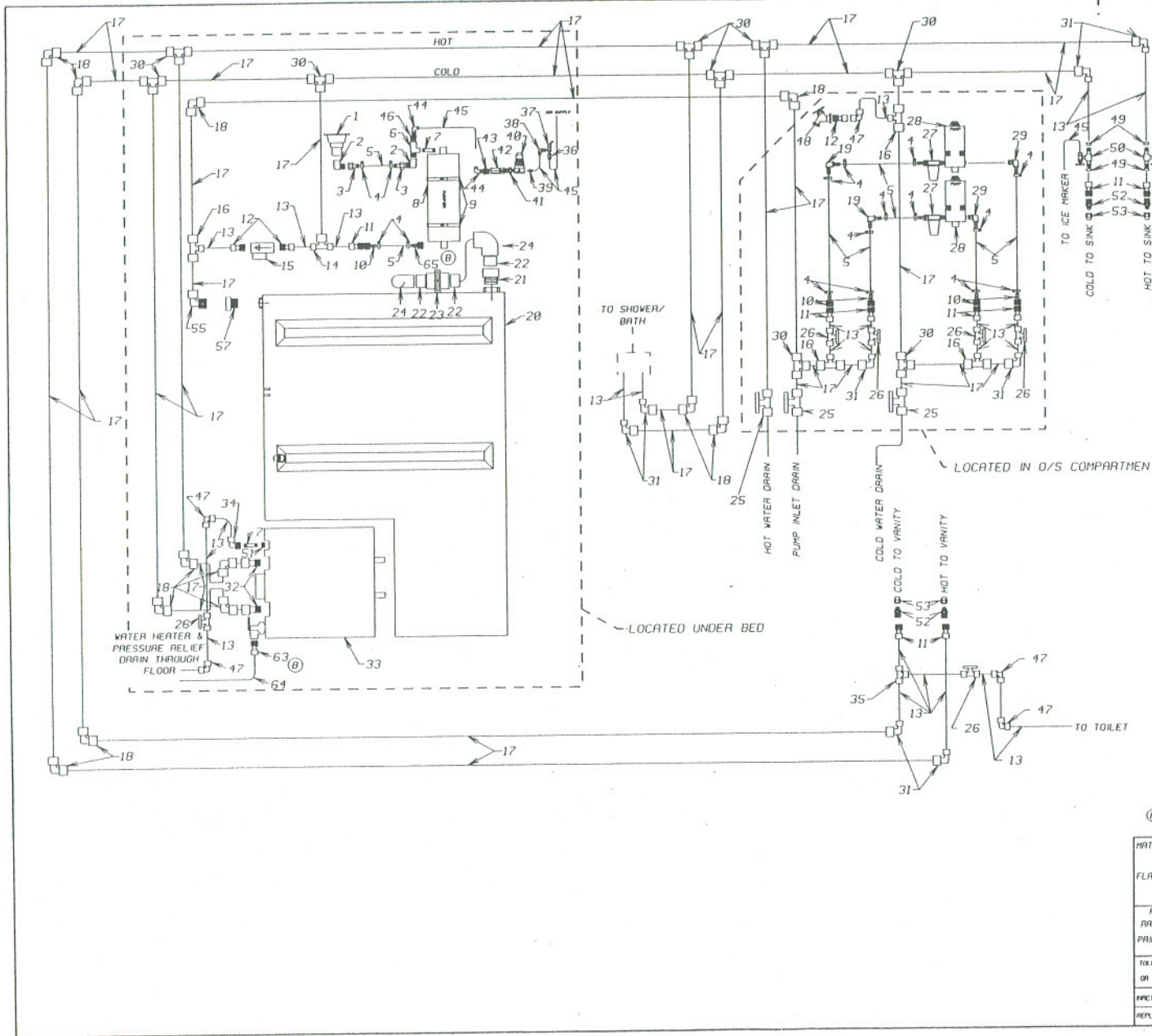
REVISED HEATER RELIEF PLUMB.	AWW	AWW	9410/10/1
& CONNECTION AT PURIFIER OUTPUT			
A1 WAS 6042915; A2 WAS 02813	AWW	AWW	9410 8/9
A3 WAS 02801			

FINISH	COLOR OR TYPE
AWW <input type="checkbox"/>	PAINT <input type="checkbox"/>
PRIME <input type="checkbox"/>	PLATING <input type="checkbox"/>
	OTHER <input type="checkbox"/>

TOLERANCES ON ALL DIMENSIONS IS PLUS UNLESS OTHERWISE SPECIFIED: **STANDARD**

DATE: 5/22/92 BY: AWW
 DATE: 7/22/92 BY: AWW

REVISED BY: **D** 6045264



ITEM	P/N	DESCRIPTION	QTY.
1	3959772	REGULATOR, CITY WATER FILL, VFN	1
2	2233930	ELL, STREET, 1/2 MPT BRASS NO. 340	2
3	3604820	CONNECTOR, 1/2 NPT, 90 DEG, BRASS	2
4	2627571	CLAMP, HOSE, 6283	16
5	2255933	HOSE, WATER PUMP, 1/2 INCH	8'
6	0522516	TEE, STREET, 0.50" PIPE, BRASS	1
7	3758554	NIPPLE, PIPE, 1/2 X 2 LG, BRASS	2
8	3601255	PURIFIER, WATER, MODEL 7550	1
9	2008555	CLAMP, UNIVERSAL HOSE, 18 INCH	2
10	6042865	ADAPTER, STRAIGHT, 1/2 HOSE BARB-1/2 MPT	(B) 5
11	6042816	ADAPTER, SWIVEL, STRAIGHT, 1/2P-1/2FPT, FL 02873	(A2) 9
12	6042824	ADAPTER, STRAIGHT, 1/2P-1/2MPT, FLAIR-IT 02842	(B) 3
13	3741865	TUBING, 0.50 ID, POLYBUTYLENE	(B) 19'
14	6042666	TEE, 1/2-1/2-3/4 POLY, FLAIR-IT 02823	1
15	2251222	VALVE, SOLINOID, CUT-OFF	1
16	6042758	TEE, 3/4-3/4-1/2 POLY, FLAIR-IT 02826	4
17	6021653	TUBING, POLYBUTYLENE, 3/4 ID	130'
18	6042782	ELBOW, 3/4 POLY, FLAIR-IT 02806	12
19	6044077	ELBOW, 1/2 HOSE BARB, 90 DEGREE	2
20	6041966	TANK, FRESH WATER, QUEEN & CROSS ISLAND 1993 WLWB	1
21	6042899	ADAPTER, 2 INCH PVC-2 INCH MPT, NIBCO 1804	1
22	6042987	PIPE, PVC, 2 INCH X 20 FT.	2'
23	1485881	VALVE, DUMP, 2 INCH PVC	1
24	6042923	ELBOW, 2 INCH PVC, NIBCO 1807	2
25	6042840	VALVE, STRAIGHT STOP, 1/2 POLY, FLAIR-IT 02801	2
26	6042832	VALVE, STRAIGHT STOP, 1/2 POLY, FLAIR-IT 02800	3
27	6021356	STRAINER, WATER PUMP, FLOJET, 406 X 1/2 HOSE BARB	2
28	6021349	PUMP, WATER, 3.3 GPM, FLOJET 4406-143J	2
29	6044869	KIT, PORT, WATER PUMP, FLOJET 20301-009, 90 ELBOW	1 SET
30	6042741	TEE, 3/4 POLY, FLAIR-IT 02827	3
31	6042790	ELBOW, 1/2-3/4, FLAIR-IT 02805	8
32	6042881	ADAPTER, STRAIGHT, 3/4P-1/2MPT, FLAIR-IT 02857	2
33	6044119	HEATER, WATER, ELECTRIC W/ENGINE AIR & 3/4 DRAIN	1
34	6042808	ELBOW, SWIVEL, 1/2P-1/2FPT SW, FLAIR-IT 02816	(A3) 1
35	6042733	TEE, 1/2 POLY, FLAIR-IT 02820	1
36	3827250	CONNECTOR, MALE, 10-32 UNF X 1/4 TUBE	1
37	2227338	VALVE, AIR, TV-35	1
38	3827326	ELBOW, MALE SWIVEL, 90, 10/32 UNF X 1/4 TUBE	1
39	3827227	CONNECTOR, MALE, 1/4 NPT X 1/4 TUBE	1
40	3747730	REGULATOR, AIR, 1/4 INCH FPT	1
41	2245199	NIPPLE, HEX, 1/4 MPT X 3/8 MPT	1
42	3805215	VALVE, CHECK, AIR COMPRESSOR	1
43	2027134	BUSHING, PIPE, 3/8 X 1/4	1
44	3827367	ELBOW, MALE, 90DEGREE, 1/4 NPTF X 1/4 TUBE	2
45	2216463	TUBING, HYTRON, 1/4 OD X 0.040 WALL	5F.T.
46	2027159	BUSHING, PIPE, 1/2 X 1/4	1
47	6042774	ELBOW, 1/2 POLY, FLAIR-IT 02800	(B) 5
48	3741915	SILLOCK, 1/2 FPT, BRASS, 90BTJ	1
49	3779592	SLEEVE, CRAMPING, 1/2 BARB, FB895	1
50	3941127	VALVE, CUT-OFF, POLY, 1/2 BARB, STREET	2
51	3820693	BUSHING, 3/4 X 1/2 PIPE, BRASS	1
52	2257897	CONNECTOR, 0.375FL X 0.50MPT, BRASS	4
53	2027076	NUT, 1110 X 6 3/8, FLARE	4
54	2253425	CEMENT, ALL PURPOSE, ABS-PVC	0.25
55	6044093	ELBOW, 3/4 POLY-3/4 MPT, FLAIR-IT 02809	1
56	6044101	BOARD, MTG., PUMPS, F/W PLUMBING 1993 WLWB	1
57	6021695	BUSHING, BRASS, 1-1/4 MPT X 3/4 FPT	1
58	6045485	DIAGRAM ASSY., OVERFLOW & VENT, F/W TANK 93 WB	1
59	6045736	BRACKET, MTG., FAUCET, O/S COMPARTMENT 93 WB	1
60	6045744	BREKNER, VACUUM, O/S FAUCET, BRASS, 100-904	1
61	6045397	BOARD, MTG., PURIFIER 1993 WLWB	1
62	3844388	WIRE, SCREEN, ALUM., 32 IN WIDE X 100 FT	1'X4'
63	6046718	ADAPTER, 3/4 COPPER - 1/2 MIP, 604R	1
64	6046825	TUBING, COPPER, 3/4L SOFT COPPER	2'
65	2216125	ADAPTER, BRASS, 1/2 MPT X 1/2 BARB	1

MATERIAL:

FLAT SIZE: B REVISED HTR. RELIEF PLUMBING & CONECTOR AT PURIFIER OUTPUT
 A A1 WAS 6042915; A2 WAS 02843
 --A3 WAS 02804

FINISH: PAINT: _____
 PLATING: _____
 OTHER: _____

TELEANCES ON ALL DIMENSIONS IN PLUS OR MINUS UNLESS OTHERWISE SPECIFIED.

ACTIVATES BY: _____
 REPLACED BY NO: _____

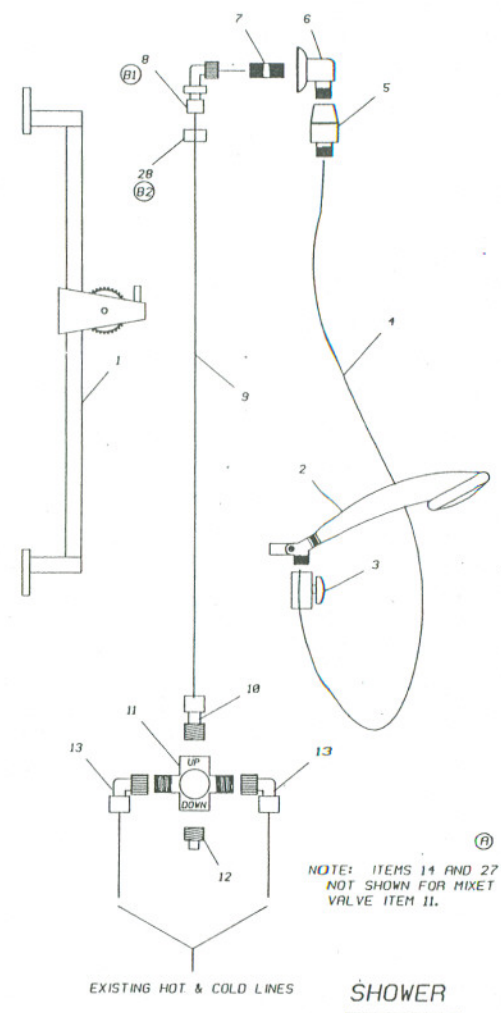
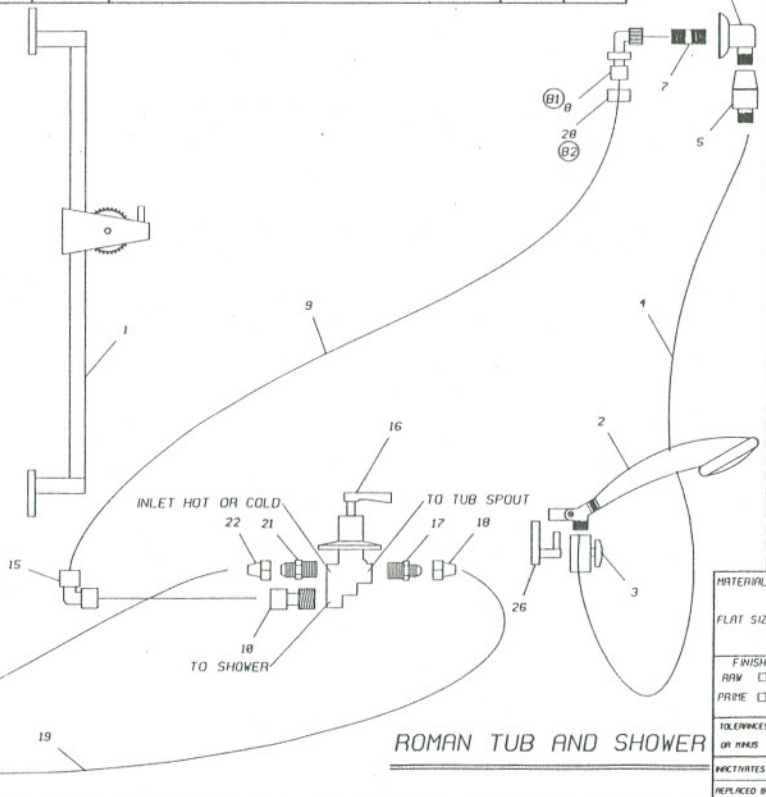
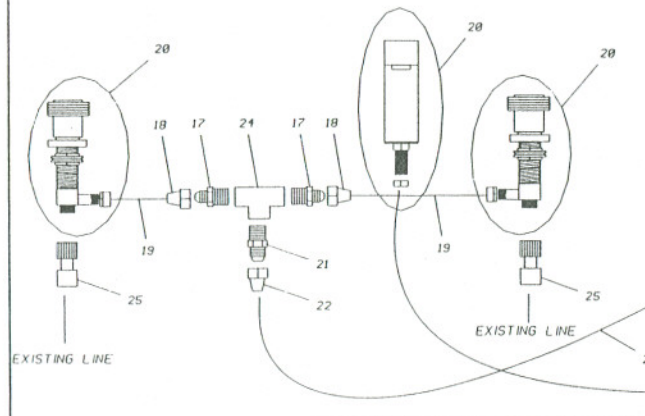
REVISED: 918 Blue Bird Wonder Lodge
 DATE: 6/1/92

DIAGRAM ASSY., PLUMBING, FRESH WATER, OPTION 5989/5941 1993 WLWB

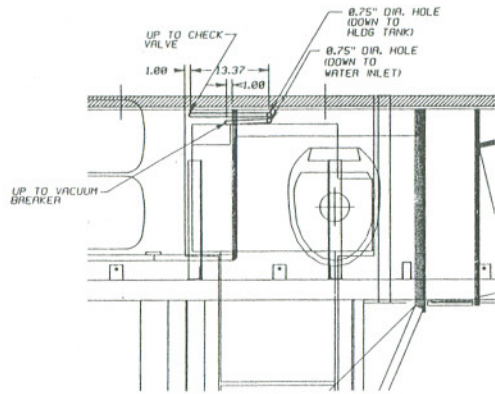
DATE: 3/31/92 BY: AHW
 DATE: 6/1/92 BY: AHW

SIZE: D 6042725

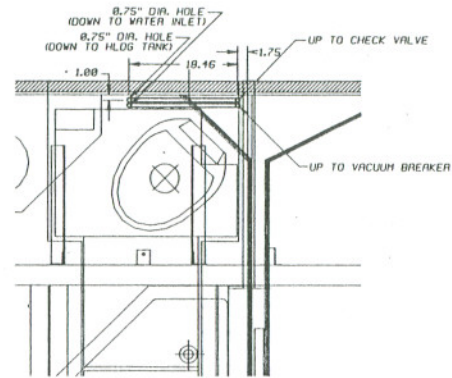
ITEM	PART NUMBER	DESCRIPTION	QTY. TUB/ SHWR	QTY. SHWR	ITEM	PART NUMBER	DESCRIPTION	QTY. TUB/ SHWR	QTY. SHWR
1B	6041952	BAR, ADJUSTABLE, 24 IN, ALSONS 15011-2010 BP	1	1	18	3743994	NUT, LONG, FORGED FLARE, 0.375, BRASS	3	----
1C	6041960	BAR, ADJUSTABLE, 24 IN, ALSONS 15011 C BX	1	1	19	2027381	TUBING, COPPER, 3/8, TYPE L	6 FT	----
2B	6041937	SHOWER, HAND HELD, MASSAGE, ALSONS 425-2010 BP	1	1	20B	3876539	FAUCET, TUB, ELJER 553-2050, BRASS	1	----
2C	6041945	SHOWER, HAND HELD, MASSAGE, ALSONS 425C BX	1	1	20C	6033062	FAUCET, TUB, MOEN 5901-H202, CHROME	1	----
3B	6045017	VALVE, VOLUME CONTROL, ALSONS 476-2010 BP	1	1	21	2260222	CONNECTOR, 0.50MPT X 0.50FL, BRASS	2	----
3C	6045025	VALVE, VOLUME CONTROL, ALSONS 476C BX	1	1	22	3744000	NUT, LONG, FORGED FLARE, 0.50, BRASS	2	----
4B	6041994	HOSE, PERSONAL SHOWER, ALSONS 190-2059 BP	1	1	23	2264106	TUBING, COPPER, 1/2 OD X 0.032 WALL, REFRIG	4 FT	----
4C	6045009	HOSE, PERSONAL SHOWER, ALSONS 190-59 BX	1	1	24	6032239	TEE, UNION, 0.50 FPT	1	----
5B	6040984	BREAKER, VACUUM, ALSONS 1900 2010 BP, POL BRASS	1	1	25	6042816	ADAPTER, SWIVEL, STRAIGHT, 1/2P-1/2FPT, FL 02043	2	----
5C	6040976	BREAKER, VACUUM, ALSONS 1900 BX, CHROME	1	1	26B	6045777	MOUNT, WALL, PERSONAL SHOWER, ALSONS 5001 2010 BP	1	----
6B	6041978	ELBOW, SUPPLY, FLANGED, ALSONS 1990 F 2010 BP	1	1	26C	6045785	MOUNT, WALL, PERSONAL SHOWER, ALSONS 5001 BX, CHROME	1	----
6C	6041986	ELBOW, SUPPLY, FLANGED, ALSONS 1990 F BX	1	1	27	6045843	KIT, MTG., MIXET VALVE, ALSONS HVMK	1	----
7	3758547	NIPPLE, 1/2 PIPE X 1 1/2 LG, BRASS	1	1	28	3779592	SLEEVE, CRIMPING, 1/2 BARB, PB 095	1	1
8	3941119	ELBOW, DROP EAR, QDE33BFC (B)	1	1					
9	3741865	TUBING, 1/2 IN ID POLYBUTYLENE	5 FT	5 FT					
10	6042824	ADAPTER, STRAIGHT, 1/2P-1/2MPT, FLAIR-IT 02042	1	1					
11	6045033	VALVE BODY, MIXET, ALSONS 1066A	1	1					
12	2232973	PLUG, 1/2	1	1					
13	6042800	ELBOW, SWIVEL, 1/2P-1/2FPT SW, FLAIR-IT 02004	2	2					
14B	6045041	TRIM PACKAGE, MIXET VALVE, ALSONS 1061DLX2010	1	1					
14C	6045050	TRIM PACKAGE, MIXET VALVE, ALSONS CHA-1061DLX	1	1					
15	6042774	ELBOW, 1/2 POLY, FLAIR-IT 02000	1	1					
16B	6045751	VALVE, TRANSFER, ALSONS 4930 2010 BP	1	1					
16C	6045769	VALVE, TRANSFER, ALSONS 4930 BX, CHROME	1	1					
17	2257897	CONNECTOR, 0.375FL X 0.50MPT, BRASS	3	3					



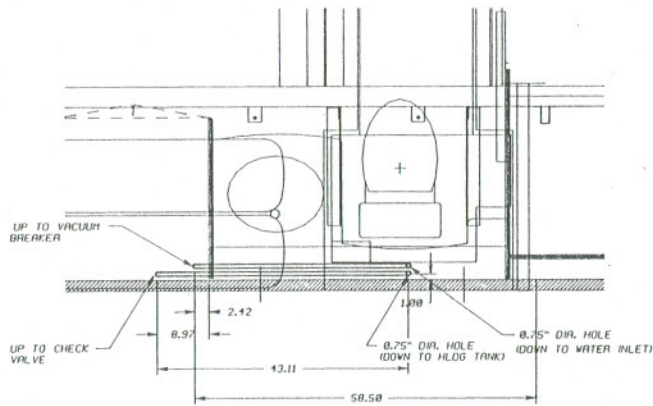
MATERIAL:									
PLAT SIZE:									
FINISH	COLOR OR TYPE								
RAW <input type="checkbox"/>	PAIN <input type="checkbox"/>								
PRIME <input type="checkbox"/>	PLATING <input type="checkbox"/>								
	OTHER <input type="checkbox"/>								
TOLERANCES ON ALL DIMENSIONS IS PLUS OR MINUS UNLESS OTHERWISE SPECIFIED:									
FACTORY NO	6032361	DATE	6/15/92	BY	AW	SCALE	1/4" = 1"	NO.	6045793
REPLACED BY NO		DATE	6/15/92	BY	AW	SCALE	1/4" = 1"	NO.	6045793



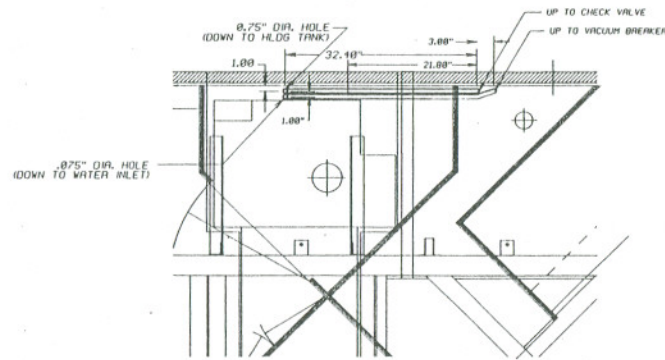
1993 WLWB - STANDARD



1993 WBSA - STANDARD

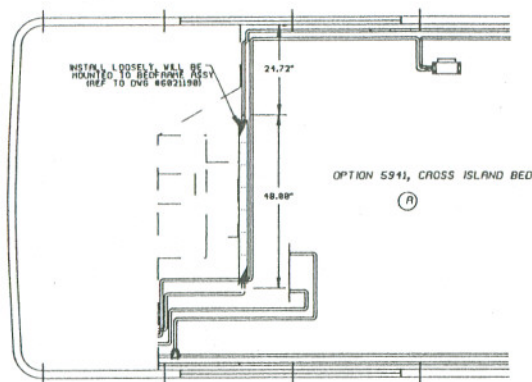


1993 WLWB - OPTION 5989

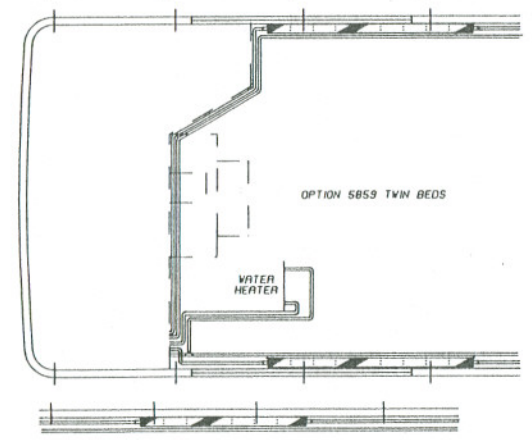


1993 WBDA - STANDARD

MATERIAL:									
FLAT SIZE:									
FINISH	COLOR OR TYPE	LET	REVISIONS	DR.	APP.	CK.	TECH	DATE	
RAW <input type="checkbox"/>	PAIN <input type="checkbox"/>	9418	Blue Bird Wonderlodge					3:32	
PRIME <input type="checkbox"/>	PLATING <input type="checkbox"/>		FORT WORTH, TEXAS, U.S.A.						
	OTHER <input type="checkbox"/>								
TOLERANCES ON ALL DIMENSIONS IS PLUS <input type="checkbox"/>		DIBBARD, PLUMBING, HOLDING TANK FLUSHER							
OR MINUS <input type="checkbox"/> UNLESS OTHERWISE SPECIFIED.		1993 WLWB							
		PAGE 1 OF 2							
INDICATES NO	CHUCK 6024285	DR. 6/19/92	BY FHW	SCALE					
REPLACED BY NO		APP. 6/19/92	BY FHW	BY	D 6042915				
		CK.							



OPTION 5941, CROSS ISLAND BED
A

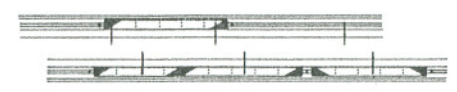


OPTION 5859 TWIN BEDS

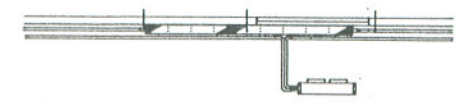
OPTION 5989, NEW DIMENSION WALK THRU-BATH



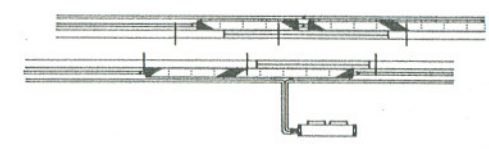
OPT 5947, SHOWER IN LIEU OF TUB



OPTION 5655, MICROPHOR TOILET

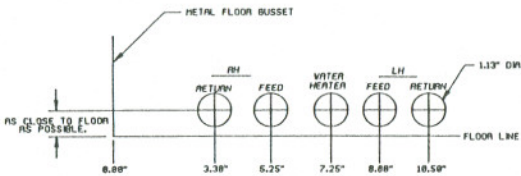
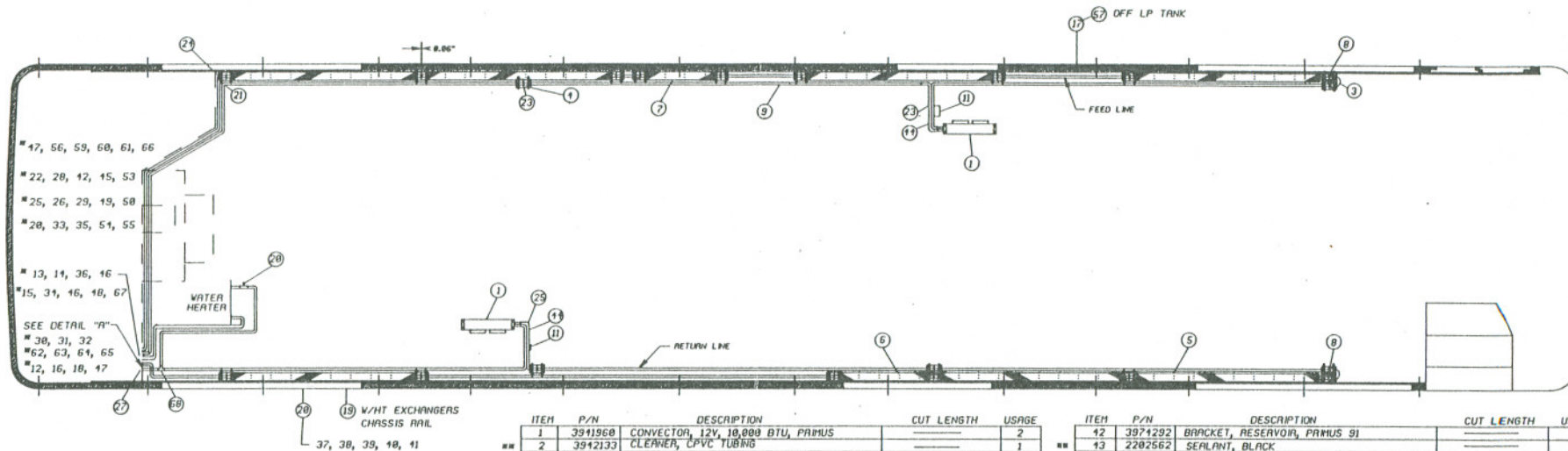


OPTION 5874 CORIAN DOUBLE HANDED SINK



OPTION 5916, "L" DINETTE

MATERIAL:									
FLAT SIZE:									
FINISH	COLOR OR TYPE	A	SEE FINISH CODE SHEET FOR BLUE ROOM	GM	GM	913	920		
PAV <input type="checkbox"/>	PAINT <input type="checkbox"/>	LET	REVISIONS	ENR	APP.	CC	EDW	CHIT	
PAPP <input type="checkbox"/>	PLATING <input type="checkbox"/>	9922A	Blue Bird Woods Lodge						8.0625
	OTHER <input type="checkbox"/>								
TOLERANCES ON ALL DIMENSIONS IS PLUS		DIAGRAM, HYDRONIC HEAT PLUMBING LAYOUT							
OR MINUS <input type="checkbox"/> UNLESS OTHERWISE SPECIFIED		FLOORPLAN, 3982 V.L.B., 1993							
MATERIALS HOW		OPTIONAL EQUIPMENT							
REPLACED BY NO		DATE	BY	APP.	CC	BY	6023188		



DETAIL "A"
1/2 SCALE

NOTE: * FOUND IN THE ENGINE COMPARTMENT.
** USED TO INSTALL OR CHARGE AS NEEDED.

ITEM	P/N	DESCRIPTION	CUT LENGTH	USAGE
1	3941960	CONVECTOR, 12V, 10,000 BTU, PARIUS		2
2	3942133	CLEANER, CPVC TUBING		1
3	3941830	ELBOW U-100 RUBBER PARIUS 711692		5
4	3942150	CLIP, SPRING 22MM, PARIUS 711652		88
5	3941929	CONVECTOR, NATURAL, PARIUS TEH1-700523	FULL LENGTH 59IN	7
6	3941929	CONVECTOR, NATURAL, PARIUS TEH1-700523	30 INCHES	1
7	3941929	CONVECTOR, NATURAL, PARIUS TEH1-700523	24 INCHES	1
8	3941861	VALVE, BLEEDER, PARIUS 714731		3
9	3942117	TUBING, CPVC .75" X 10 FT	FULL LENGTH 10FT	11
10	2275733	TIE, CABLE, 7 IN	FULL LENGTH 7IN	34
11	3954799	THERMOSTAT, SNAP-DISC 2E247 91 WL		2
12	3941812	FITTING, DRAIN PETCOCK, PARIUS 712951		2
13	3941846	VALVE, BALL, PARIUS 714701		1
14	3941829	HEATER, IMMERSION 120V, PARIUS 716031		2
15	3941887	TANK, HEADER SET, PARIUS 715170		2
16	3941895	SWITCH, HI TEMP/LO COOLANT, SHUT-OFF, PARIUS 715731		2
17	3941911	REGULATOR, LP, PARIUS 13200H		1
18	3941937	PUMP, 12V W/.625 PORTS, PARIUS C030P51		2
19	3941945	PUMP, 12V W/.625 PORTS, PARIUS C010P51		1
20	3941952	EXCHANGER, HEAT, PARIUS P0009301		2
21	3942125	ELBOW, 75 X 90 DEG CPVC		25
22	3942141	HOSE, WATER, 16MM, PARIUS 710503	16 FT	1
23	3942174	HOSE, WATER, 22MM, PARIUS 712210	55 FT	1
24	3942182	ELBOW, HOSE, 22MM 6X6, PARIUS 712231		7
25	3942190	ELBOW, HOSE, SHORT, PARIUS 715100		3
26	3942265	TEE, PIPE 22MM X 16MM X 22MM, PARIUS 713041		3
27	3942273	FITTING, HOSE REDUCER, PARIUS 714071		3
28	3954807	HOSE, BLEED, HIGH TEMP, PARIUS 91 WL	12 FT	1
29	3954815	BRACKET, CONVECTOR, PARIUS, 711632 91 WL		1
30	3954823	FITTING, PETCOCK, PARIUS, 712952 91 WL		2
31	3954831	FITTING, GAS, PARIUS, BOILER 91WL		2
32	3954849	BOILER, LP, PARIUS 249005 91 WL		2
33	2000509	CLAMP, CABLE L, 16		1
34	3941903	CLIP, SPRING 6MM, PARIUS 715632		4
35	2223618	STAMP, CONDUIT, 1 1/4 IN T&B NO 1214		20
36	3941531	VALVE, SOLENOID, CHASSIS HEATER, BUSCH 1147412		1
37	0058902	INSULATION, AMPHIFLEX, 2 1/2 IN X 3/8 WALL	10 FT	1
38	1200710	INSULATION, AMPHIFLEX, 3/4 IN X 3/8 WALL	10 FT	1
39	3954757	BRACKET, MTG, HEAT EXCHANGER 91 WB		2
40	3954765	BRACKET, MTG, FIT HOSE, HEAT EXCHANGER 91 WB		1
41	3954773	PLATE, MTG, HEAT HOSE HEAT EXCHANGER 91 WB		1

ITEM	P/N	DESCRIPTION	CUT LENGTH	USAGE
42	3974292	BRACKET, RESERVOIR, PARIUS 91		1
43	2202562	SEALANT, BLACK		1
44	3709294	CAPACITATOR, ELEC POLAR, 1000 MICRO WORKING VOLTS		1
45	3969501	BRACKET, MTG, PARIUS, J-BOX		1
46	1077710	RELAY, BOSCH 0-332-204-150		3
47	0559047	TEE, MALE, BRANCH, 1/4 PIPE, 3600 X 1		1
48	2211110	BOX, RECEPTAL, WEATHERPROOF		1
49	2227009	CONNECTOR, STGHT, LIQUIDTITE, 1/2IN		1
50	2264409	COVER, BLANK, WITH GASKET		1
51	3075416	CONNECTOR, CORO, GRIP, ELEC, 375 HUB, .25-.37		1
52	1391705	ANTIFREEZE, LOW SILICATE ETHYLENE GLYCOL BASE		10 GAL
53	3743994	ANTI, LONG FORGED FLARE, .375 BRASS		3
54	3979416	BRACKET, MTG, RELAY		1
55	3742062	CLAMP, HOSE 5/8IN		1
56	3079030	SHIELD, BOILER VENTILATION		1
57	6024747	HIGH PRESSURE DECAL		1
58	2253425	CEMENT, ALL PURPOSE, ABS-PVC		1
59	3007559	COUPLING, BRASS, 1/4IN		2
60	0559047	TEE, MALE, BRANCH, 1/4 PIPE 3600 X 1		2
61	0976060	HOSE ASSY, DUAL LABEL, DH130MP4P4		1
62	3950709	BRACKET, MTG, PARIUS BOILER 91 WB		1
63	3950012	PANEL, END RH, PARIUS BOILER, 91 WB		1
64	3950205	PANEL, END LH, PARIUS BOILER, 91WB		1
65	3950319	PANEL, TOP, PARIUS BOILER 91 WB		1
66	2260719	ELBOW MALE 3/8" FLARE X 1/4 IN		1
67	2005231	LOOM, ASPHALTUS, WIRE, 1IN	16 FT	1
68	6023111	TEE, 3/4 IN, CPVC		1

MATERIAL:

FLAT SIZE:

FINISH COLOR OR TYPE

PAINT PLATING OTHER

TOLERANCES ON ALL DIMENSIONS IS PLUS UNLESS OTHERWISE SPECIFIED.

QUANTITIES SHOWN BY C. OLIVER

REPLACED BY NO

LET NO: 3921A

REVISED: Blue Bird Wonder Lodge

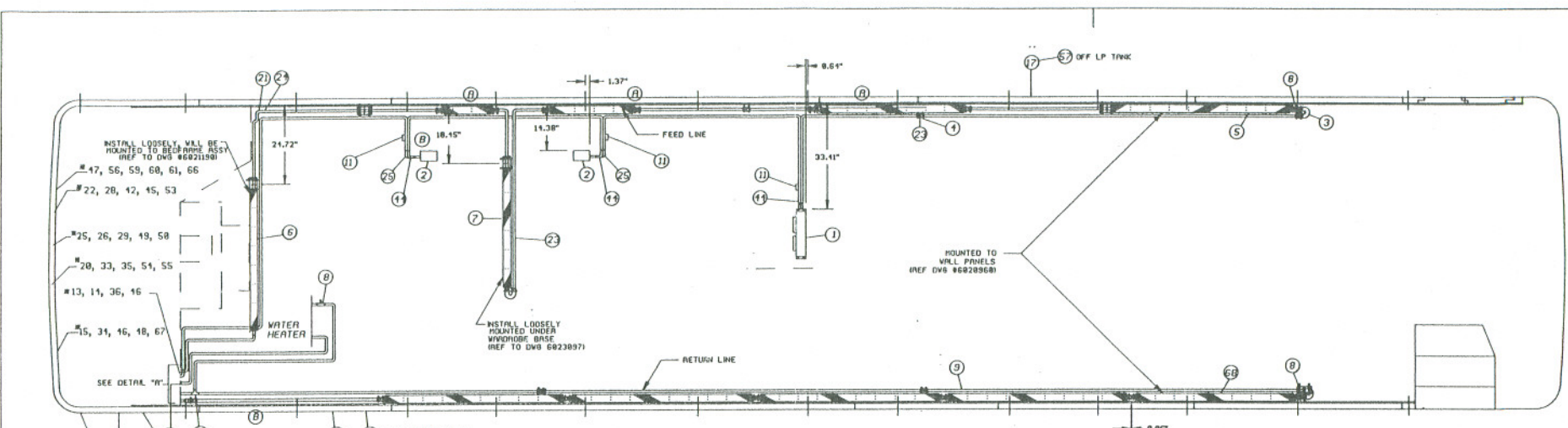
DATE: 0.0625

DIAGRAM, HYDRAONIC HEAT PLUMBING LAYOUT FLOORPLAN, 3907 WLVB, 1952, STANDARD

DATE: 12/17/90 BY: C. OLIVER

NO: D

NO: 6023170



INSTALL LOOSELY MOUNTED UNDER WINDSHIELD BASE (REF TO DWG 6023007)

INSTALL LOOSELY MOUNTED UNDER WINDSHIELD ASSTY (REF TO DWG 6021901)

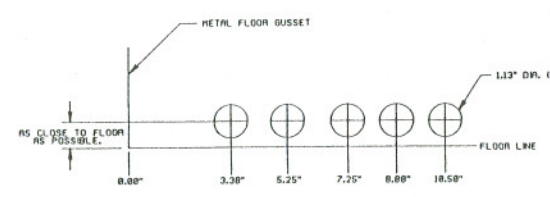
SEE DETAIL "A"

WATER HEATER

FEED LINE

RETURN LINE

W/HT EXCHANGERS ON CHASSIS RAIL



ITEM	P/N	DESCRIPTION	CUT LENGTH	USAGE
1	3941960	CONVECTOR, 12V, 10,000 BTU, P/AMUS	---	1
2	3941978	CONVECTOR, 12V, 4,000 BTU, P/AMUS	---	2
3	3941030	ELBOW U-100 RUBBER P/AMUS 714592	---	5
4	3942150	CLIP, SPRING 22MM, P/AMUS 215632	---	36
5	3941929	CONVECTOR, NATURAL, P/AMUS TEH1-700523	FULL LENGTH 59IN	5
6	3941929	CONVECTOR, NATURAL, P/AMUS TEH1-700523	40 INCHES	1
7	3941929	CONVECTOR, NATURAL, P/AMUS TEH1-700523	41 INCHES	1
8	3941061	VALVE, BLEEDER, P/AMUS 714731	---	3
9	3942117	TUBING, CPVC .75" X 10 FT	FULL LENGTH 10FT	12
10	2275733	TIE, CABLE, 7 IN	FULL LENGTH 7IN	34
11	3954799	THERMOSTAT, SNAP-DISC 2E247 91 WL	---	3
12	3941012	FITTING, DRAWN PETCOCK, P/AMUS 712951	---	1
13	3941046	VALVE, BALL, P/AMUS 714701	---	2
14	3941079	HEATER, IMMERSION 120V, P/AMUS 716031	---	1
15	3941007	TANK, HEADER SET, P/AMUS 715179	---	2
16	3941095	SWITCH, HI TEMP/O COOLANT, SMT-OFF, P/AMUS 715731	---	2
17	3941911	REGULATOR, LP, P/AMUS 13280H	---	1
18	3941937	PUMP, 12V W/75 PORTS, P/AMUS 2030P51	---	2
19	3941945	PUMP, 12V W/625 PORTS, P/AMUS C010P51	---	1
20	3941952	EXCHANGER, HEAT, P/AMUS P0009301	---	2
21	3942125	ELBOW, .75 X 90 DEG CPVC	---	25
22	3942141	HOSE, WATER, 16MM, P/AMUS 710503	16 FT	1
23	3942174	HOSE, WATER, 22MM, P/AMUS 712210	57 FT	1
24	3942182	ELBOW, HOSE, 22MM 6X6, P/AMUS 712231	---	7
25	3942190	ELBOW, HOSE, SHORT, P/AMUS 715190	---	1
26	3942265	TEE, PIPE 22MM X 16MM X 22MM, P/AMUS 713041	---	3
27	3942273	FITTING, HOSE REDUCER, P/AMUS 714071	---	3
28	3954007	HOSE, BLEED, HIGH TEMP, P/AMUS 91 WL	12 FT	1
29	3954015	BRACKET, CONVECTOR, P/AMUS, 711532 91 WL	---	4
30	3954023	FITTING, PETCOCK, P/AMUS, 712952 91 WL	---	2
31	3954031	FITTING, GAS, P/AMUS, BOILER 91WL	---	2
32	3954049	BOILER, LP, P/AMUS 249005 91 WL	---	1
33	2000509	CLAMP, CABLE L, 16	---	1
34	3941903	CLIP, SPRING 6MM, P/AMUS 215632	---	4
35	2223610	STRAP, CONDUIT, 1/4 IN TAB NO 1214	---	20
36	3941531	VALVE, SOLENOID, CHASSIS HEATER, BUSCH 1147412	---	1
37	0058902	INSULATION, AMPHIFLEX, 2 1/8 ID X 3/8 WALL	10 FT	1
38	1200718	INSULATION, AMPHIFLEX, 3/4 ID X 3/8 WALL	10 FT	1
39	3954757	BRACKET, MTG, HEAT EXCHANGER 91 WB	---	2
40	3954765	BRACKET, MTG, FAT HOSE, HEAT EXCHANGER 91 WB	---	1
41	3954773	PLATE, MTG, REAR HOSE HEAT EXCHANGER 91 WB	---	1

NOTE: * FOUND IN THE ENGINE COMPARTMENT.
 ** USED TO INSTALL OR CHARGE AS NEEDED.

ITEM	P/N	DESCRIPTION	CUT LENGTH	USAGE
42	3974292	BRACKET, RESERVOIR, P/AMUS 91	---	1
43	2202562	SEALANT, BLACK	---	1
44	3709294	CAPACITOR, ELEC POLAR, 1000 MICRO WORKING VOLTS	---	1
45	3969501	BRACKET, MTG, P/AMUS, J-BOX	---	1
46	1077710	RELAY, BOSCH 0-332-201-150	---	3
47	0559047	TEE, MALE, BRANCH, 1/4 PIPE 3600 X 4	---	1
48	2211118	BOX, RECEPTICAL, WEATHERPROOF	---	1
49	2227009	CONNECTOR, STGHT, LIQUIDITE, 1/2IN	---	1
50	2264409	COVER, BLANK, WITH GASKET	---	1
51	3075416	CONNECTOR, COND, 6AMP, ELEC, 375 HUB, .25-.37	---	1
52	1391705	ANTIFREEZE, LOW SILICATE ETHYLENE GLYCOL BASE	---	10 GAL
53	3743994	NUT, LONG FORGED FLARE, .375 BRASS	---	3
54	3979416	BRACKET, MTG, RELAY	---	1
55	3747062	CLAMP, HOSE 5/8IN	---	1
56	3979030	SHIELD, BOILER VENTILATION	---	1
57	6021747	HIGH PRESSURE DECAL	---	1
58	2253425	CEMENT, ALL PURPOSE, ABS-PVC	---	1
59	3007559	COUPLING, BRASS, 1/4IN	---	2
60	0559047	TEE, MALE, BRANCH, 1/4 PIPE 3600 X 4	---	2
61	0970060	HOSE ASSY, DUAL LABEL, DH430HP4FP4	---	1
62	3950709	BRACKET, MTG, P/AMUS BOILER 91 WB	---	1
63	3950012	PANEL, END RH, P/AMUS BOILER 91 WB	---	1
64	3950205	PANEL, END LH, P/AMUS BOILER 91WB	---	1
65	3950319	PANEL, TOP, P/AMUS BOILER 91 WB	---	1
66	2260710	ELBOW MALE 3/8" FLARE X 1/4 IN	---	1
67	2005724	LOOM, ASPHALTUS, WIRE, 1IN	16 FT	1
68	3941929	CONVECTOR, NATURAL, P/AMUS TEH1-700523	52.50 INCHES	1
69	3942133	CLEANER, CPVC TUBING	PINT	1
70	6023444	TEE, 3/4 INCH, CPVC	---	1

MATERIAL:

FLAT SIZE:

FINISH COLOR OR TYPE:

RAW PAINT PLATING OTHER

TOLERANCES ON ALL DIMENSIONS B PLUS UNLESS OTHERWISE SPECIFIED

DIAGRAM, HYDRONIC HEAT PLUMBING LAYOUT
 VBSA '92

DATE: 11/13/90 BY: C. OLIVER
 APP. BY: [Signature]
 REPLACED BY NO: []

REV: 021208